



RECREATION TRAILS 2010 - 2020



Page intentionally left blank.

CONTENTS

INTRODUCTION	4
BACKGROUND	6
INTEGRATION	8
OUR COMMITMENT	12
OVERALL DIRECTIONAL STATEMENT	13
TRAIL LOCATIONS	14
IMPLEMENTATION - STAGE 1	15
IMPLEMENTATION - STAGE 2	34
ACKNOWLEDGEMENTS	35



INTRODUCTION

Trails can provide a wide range of benefits to the community including social and physical health, economic, environmental and cultural benefits.

Definitions

For the purposes of this strategy a trail is defined as: “A corridor, route, pathway or water body used for non-motorised recreational uses such as horse riding, walking, off-road cycling or canoeing/kayaking that pass through or connect natural environments and/or human communities. It is a route formally designated by the land manager and may take a variety of forms including fully-developed tracks, road reserves (formed and unformed) or signed routes through the landscape.”¹

It is important to note that this strategy does not include provisions for trail bikes.

Benefits of trails

The benefits of trails can be identified under the following categories:

Social and physical health benefits:

- Improve physical and mental health.
- Improve community health and reduce health expenditure.
- Facilitate participation and social interaction between a diversity of community members, age groups, individuals and families.
- Trails can deliver a wide range of opportunities to a range of people including the elderly and people with a disability.
- Trails can introduce participants to other recreational and participation offerings in the community.
- Trails help to connect people and places.
- Trails can develop community pride and promote the heritage of the community.

1. Adapted from Department of Infrastructure and Planning (2007) Active Trails - A Strategy for Regional Trails | South East Queensland.

Economic benefits:

- Trail visitors spend money in towns and communities along trails.
- Trails generate intrastate, interstate and overseas tourism spending.
- Trails support and enhance local business opportunities.
- Trail users spend money preparing for their trail journeys or recreation activities.
- Trail construction and maintenance can generate employment opportunities.

Environmental and cultural benefits:

- Trails can provide opportunities for the community to experience natural and cultural environments.
- Trails can be a means of educating users about the attributes of an area which can increase environmental and cultural awareness and appreciation.
- Trails lead to a decrease in the use of motorised vehicles for transportation and recreation. This helps reduce the production of emissions that cause global warming and respiratory problems.
- Trails can increase community ownership which helps to preserve natural and cultural values.
- Trails can provide opportunities for community participation in conservation and revegetation work.

Logan City Council Trail User Survey results showed that the majority of respondents (36%) walk along the existing trails. This is consistent with survey data from across Australia in terms of walking dominating activities though not as high as other surveys (walking regularly shows up around 50%). If exercising a dog (effectively walking) is added to walking, the percentage is 50%.

Logan is a vibrant, culturally diverse city which is going through a period of unprecedented expansion. Since the Council amalgamations of March 2008, Logan has become the sixth biggest local government area in Australia.

A necessary part of this expansion is that Council, as a civic leader, is equipped to meet the challenges which this period of growth will bring. One of those challenges is to implement effective strategies for the delivery of community services.



BACKGROUND

“In the year 2026 Logan is a city of opportunity. Strategically positioned within a rapidly changing region and a global economy, we live in a dynamic city that sustains our quality of life. Here, neighbours, generations and cultures connect. Our lifestyles are in harmony with our environment. Logan City is a safe and healthy community, a place all generations will be proud to live and thrive in.”

“Logan 2026 City Directions”, Logan City Council

In keeping with the vision articulated in Logan 2026 City Directions, Council has worked alongside the community to develop a suite of strategies that acknowledge the benefits of economic development and links them to a commitment to social justice and equitable outcomes for all residents.

The Community Services Branch delivers outputs through four program areas:

- Community Development and Safety
- Leasing and Facility Management
- Social Planning
- Sport and Recreation (Planning & Delivery)

These programs respond to specific focus areas outlined in Council’s 2009-2013 Corporate Plan. Combined, the activities of the branch including the related strategies respond to all six priority areas, which are:

1. Infrastructure and Community facilities
2. A Sustainable Economy and Employment
3. Growth Management
4. Council Systems and Services
5. Healthy and Safe Environments
6. Strong and Supportive Communities

In preparing this strategy Council consulted with a diverse range of stakeholders to find out about the issues that are important to them. In this sense, the document is the result of collaboration between Council and the community, a relationship which will continue throughout the life of the strategy.

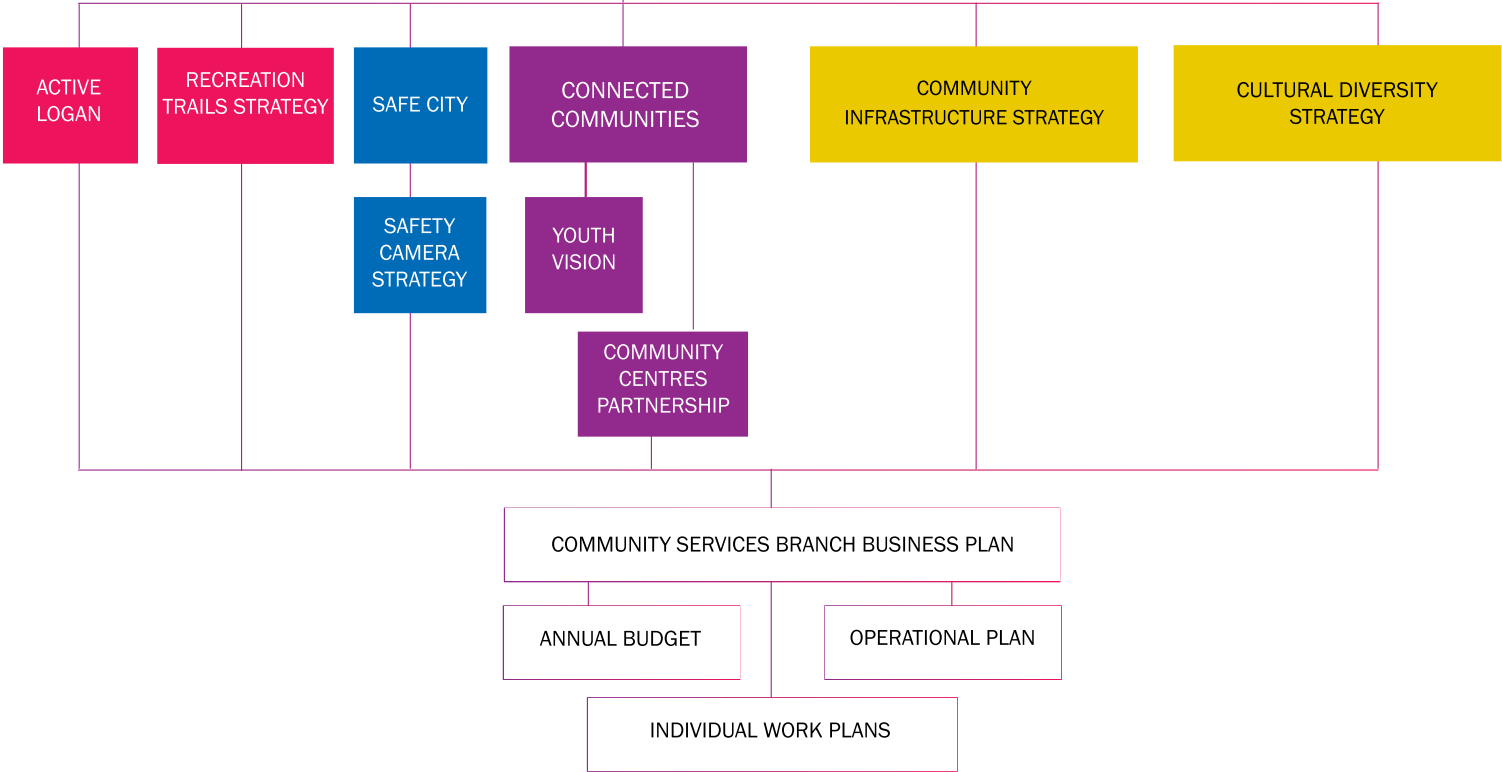
Specifically this Recreation Trails Strategy aims to identify a number of key land and water based trail opportunities, on Council controlled and or state owned land which have the potential to deliver real benefits to the Logan community.

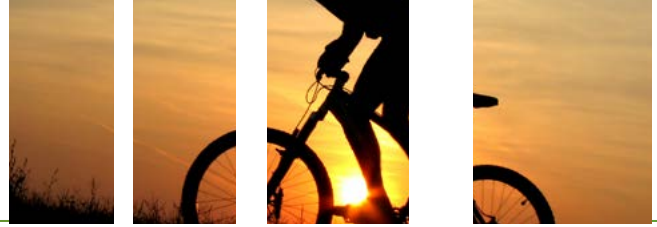
This Recreation Trails Strategy recommends a total of 20 projects and a 2 stage implementation process over a 10 year period. Stage one recommends 11 projects over the first 5 years. Stage two identifies another 9 projects over years 6-10.

Throughout the life of this strategy Council’s priorities may change and additional projects can be incorporated in the future. Similarly, projects within Stage 1 of this strategy may not be implemented within the order they have been numbered.

Community Plan
City Directions 2026

2009-2013 Corporate Plan
Planning for the future of the new Logan City





INTEGRATION

Integration of strategic documents globally and across all levels of Government is an integral part of developing a cohesive strategy

In order to provide the best opportunities and outcomes for the Logan community the Recreation Trails Strategy needs to support and integrate with a range of initiatives and agencies including Federal and State Government and incorporate these values throughout Council's policies and strategies.

Federal Government

The Council of Australian Governments (COAG) is the peak intergovernmental forum in Australia. The role of COAG is to initiate, develop and monitor the implementation of policy reforms that are of national significance and which require cooperative action by Australian governments at all levels, Federal, State and Local.

www.coag.gov.au

Department of Environment, Water and Heritage

The Australian Government Department of the Environment, Water, Heritage and the Arts develops and implements national policy, programs and legislation to protect and conserve Australia's environment and heritage and to promote Australian arts and culture.

www.environment.gov.au

Department of Innovation, Industry, Science and Research

The Department of Innovation, Industry, Science and Research is committed to developing policies and delivering programs, in partnership with stakeholders, to provide lasting economic benefits ensuring Australia's competitive future.

This department delivers TQUAL (formerly the Australian Tourism Development Program) funding which can be used for trail development.

www.innovation.gov.au

Department of Resources, Energy and Tourism

The Department of Resources, Energy and Tourism provides advice and policy support to the Australian Government regarding Australia's resources, energy and tourism sectors.

www.ret.gov.au

Department of Health and Ageing

The Department of Health and Ageing has a diverse set of responsibilities, but throughout there is a common purpose, which is reflected in their Vision statement:

"Better health and active ageing for all Australians."

The Australian Government is committed to supporting sport, particularly at the community level and increasing Australians' participation in physical and recreational activities to promote physical and mental health.

www.health.gov.au

INTEGRATION

State Government

Department of Infrastructure & Planning (DIP)

The Department of Infrastructure and Planning delivers integrated planning and infrastructure solutions for Queensland and builds the capacity of local government. The department's six priorities are to:

- Plan, coordinate and deliver key infrastructure for economic, environmental and social development.
- Plan sustainable and dynamic urban and regional communities.
- Facilitate major private sector and public projects.
- Plan, secure and manage land supply for urban, industrial and economic development.
- Foster capable, sustainable and accountable local governments.
- Strengthen a professional ethical and high performance organisation that values and nurtures its employees.

The following documents are the responsibility of this department:

1. South-East Queensland (SEQ) Regional Plan 2009-2031

The vision for SEQ is to ensure that the future is sustainable, affordable, prosperous, liveable and resilient to climate change, where the community has access to a range of quality open space and recreational opportunities.

2. Draft SEQ Outdoor Recreation Strategy

The Queensland Government, in consultation with the public, has developed a draft South East Queensland (SEQ) Outdoor Recreation Strategy. The strategy will provide a framework for coordinating the assessment, planning, delivery and management of outdoor recreation opportunities and facilities across the regions and will aim to foster partnerships between key stakeholders in SEQ.

A coordinated regional approach to the development of outdoor recreation in SEQ will enable better planning for the development of outdoor recreation infrastructure and more efficient long-term management of that infrastructure.

It will also contribute to the fulfilment of the 2006 Living the Queensland Lifestyle election commitment and is an intended outcome of the South East Queensland Regional Plan 2005-2006.

A discussion paper has been formulated for consultation purposes; a draft strategy has been developed in response to the consultation phase and is yet to be endorsed.
www.dip.qld.gov.au

3. South East Queensland Regional Trails Strategy (SEQRTS)

The purpose of the SEQRTS is to inform and guide future investment in recreation trail planning, development and management. The desired long-term outcome of the SEQRTS project is to facilitate the development of a network of regional and district trails providing an outstanding and appropriate diversity of opportunities for trail users.

Department of Communities (DOCS), Sport and Recreation Services

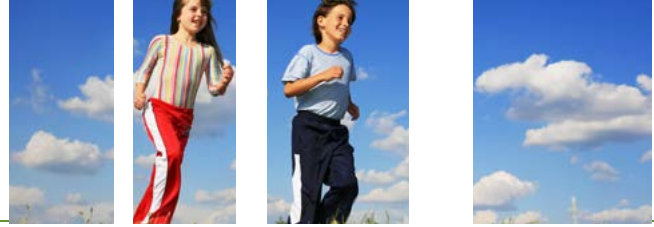
Following the 2009 state election, Sport & Recreation Services form part of the Department of Communities. Some of Sport & Recreation Services key service area initiatives for 2009-2010 are:

- Deliver the next phase of the 'Find Your 30' campaign.
- Build the capacity of the sport and recreation industry to service a growing population and provide opportunities for volunteering.
- Target sport and recreation opportunities to support social inclusion and the well-being of children and young people.

State organisation

Queensland Outdoor Recreation Federation (QORF)

QORF is the peak industry body representing the interests of outdoor recreation users in Queensland. QORF affirms the value of outdoor recreation and encourages the opportunity for all people to recreate outdoors.
www.qorf.org.au



INTEGRATION

Local Government

Local Government Act 2009

The Local Government Act 2009 ensures local government in Queensland is accountable, effective, efficient and sustainable. Council ensures it meets its statutory requirements under the Local Government Act 2009.

Logan City Council Corporate Plan

Council's Corporate Plan 2009-2013 sets the priorities for Logan City for the next four years. Logan City Council is committed to the focus areas as set out in the plan.

Logan 2026 City Directions

Logan 2026 City Directions is our city's inspiring twenty year vision. It helps us define what we do by way of smarter planning and managing growth to create a better future. The five themes which support the vision are:

- Active and healthy - creating a safe and well designed city where residents enjoy an active and healthy lifestyle.
- Creative and innovative - a hub of creativity, constantly generating new ideas that change the way we live, work and interact.
- Green and sustainable - renowned for our stewardship of the natural environment.
- Inclusive and vibrant - a friendly and welcoming city.
- Regionally and globally connected - a seamless, connected city; regionally and globally.

Planning Scheme

Planning schemes set out policies and provisions for the use, development and protection of land for an area. Each local government area in Queensland is covered by a planning scheme.

Priority Infrastructure Plan (PIP)

A Priority Infrastructure Plan (PIP) is the key tool in a planning scheme for integrating land use planning and infrastructure planning. PIP's assist in planning infrastructure in a coordinated, efficient and orderly way that encourages urban growth in areas where adequate infrastructure exists or can be provided efficiently. This ensures all new development is supplied with essential infrastructure such as water supply, sewerage, stormwater, roads, public parks and land for community facilities.

Active Logan Strategy

The Active Logan Strategy aims to provide direction for the provision of sport and recreation across the city. The Sport and Recreation team will play a key role in facilitating, supporting and advocating sport and recreation opportunities to strive for a healthy and physically active community.

Gold Coast Beaudesert Integrated Trails Strategy

The strategy, prepared in 2002, was undertaken to guide the future development and maintenance of an integrated network of recreational trails throughout (western) Gold Coast City and Beaudesert Shire. Many of the areas covered by the strategy were included in Logan City Council after the Local Government amalgamations of 2008. As part of this Trails Strategy, the recommended (relevant) trails have been reviewed to determine whether they proceed.

INTEGRATION

Funding Programs

A number of funding programs from both state and federal governments provide opportunities to develop and provide for recreation trails.

Federal Government

AusIndustry (Department of Innovation, Industry, Science and Research) TQUAL Grants

Provides funding to stimulate sustainable growth in the Australian tourism industry by supporting initiatives that: develop innovative product, services or systems within the tourism industry, contribute directly to long-term economic development in the host region or develop or support high quality visitor services and experiences.

www.ausindustry.gov.au

State Government Department of Communities

Sport & Recreation Infrastructure Program

Provides funding to develop and enhance sport and active recreation infrastructure to meet community participation needs; support local, regional and state levels of competition; and enable Queensland to attract and host key events.

www.sportrec.qld.gov.au

What does this mean for Logan?

Staying informed of political decisions, initiatives and funding opportunities by all levels of governments and private enterprise. This will ensure that the sport and recreation team can deliver upon the recommendations detailed within this Recreation Trails Strategy and provide quality outcomes for the Logan community.

Council will work closely with its community and all levels of government to deliver real outcomes for all. Council's approach is to continue to develop partnerships with a range of organisation's, to provide the best outcomes for the Logan community.

The Recreation Trails Strategy has an indicative cost of over \$9 million dollars in today's figures. Logan City Council is therefore not in a position to provide for all of the recommendations listed within this strategy on its own. Council is committed to partnering and sourcing a range of funding opportunities from all levels of government and private enterprise in order to deliver upon the recommendations detailed within the strategy.



OUR COMMITMENT

Key Direction

The Community Services Branch is committed to developing a community that is well resourced, equitable, safe and active and that effectively responds to emerging needs.

Key Driver

To achieve this commitment, the Community Services Branch aims to develop policy, programs and activities that influence the development of attractive, well planned communities whose members enjoy access to a range of facilities and services which enable them to lead healthy, safe and rewarding lives.

Priorities and Strategies

The Community Services Branch delivers outputs through our four Program areas:

- Community Development and Safety (Connected Communities Strategy, Cultural Diversity Strategy and Safe City Strategy);
- Leasing and Facility Management;
- Social Planning (Community Infrastructure Strategy);
- Sport and Recreation (Planning and Delivery) (Active Logan Strategy and Recreation Trails Strategy).

Corporate Plan Priorities

Priority One

Infrastructure and Community Facilities

1.2 Community Facilities Planning and Maintenance

Priority Two

A Sustainable Economy and Employment

2.1 Business Support

2.3 City Promotion

2.4 Business Relationships

Priority Three

Growth Management

3.1 Land Use Planning

3.2 Housing and Lifestyle

Priority Four

Council Systems and Services

4.1 Corporate Governance

4.4 Customer Service

Priority Five

Healthy and Safe Environments

5.1 Community Health and Wellbeing

5.2 Community Safety

5.3 Heritage and Culture

Priority Six

Strong and Supportive Communities

6.1 Community Development

6.2.1 Community Engagement

OVERALL DIRECTIONAL STATEMENT

Key Direction

This Recreation Trails Strategy proposes a number of specific projects that have the potential to deliver solid and real benefits to Logan City. It recognises the needs and demands of local residents (in particular) and visitors, and it takes advantage of the diverse range of attractive landscapes on offer.

The Recreation Trails Strategy proposes to deliver a number of outcomes:

- delivering different aspects of the 'Logan 2026 City Directions'
- giving Council the ability to apply for funding for trail development
- ensuring recreation trails are included in new developments
- supporting the development of nature based tourism opportunities in Logan
- enhancing community health.

Trail Planning

The Trail Planning process consists of six elements as detailed below.

Trail Planning Process

State or Regional Trail Strategies

Local Government Trails Strategy

Individual Trail Feasibility Study

Trail Development Plan

Trail Construction

Trail Maintenance

Trails were assessed against a number of criteria, these included:

- Trail demand
- Consultation
- Value for money
- Practicalities of trail development
- User Experience

To ensure the effective implementation of this strategy it is important that relevant branches of Council work together through the planning and coordination stages.

Through implementation of this strategy Logan City Council will work with key stakeholders to develop a consistent and easy to understand directional and distance signage within trails across South East Queensland. Based on the trail planning criteria this strategy recommends a total of 20 projects to be implemented in a two stage process over a 10 year period.

Stage 1 - Years 1-5

Stage 1 has identified 11 key projects; these trails are likely to attract not only local users but also visitors from outside of Logan City.

Stage 2 - Years 6-10

Stage 2 recommends another 9 projects. These projects are trails that will attract people who live close by rather than ones who may travel some distance. With this in mind, this Recreation Trails Strategy recommends the provision of a small suite of quality trails, rather than numerous 'average' trails, as the primary objective.

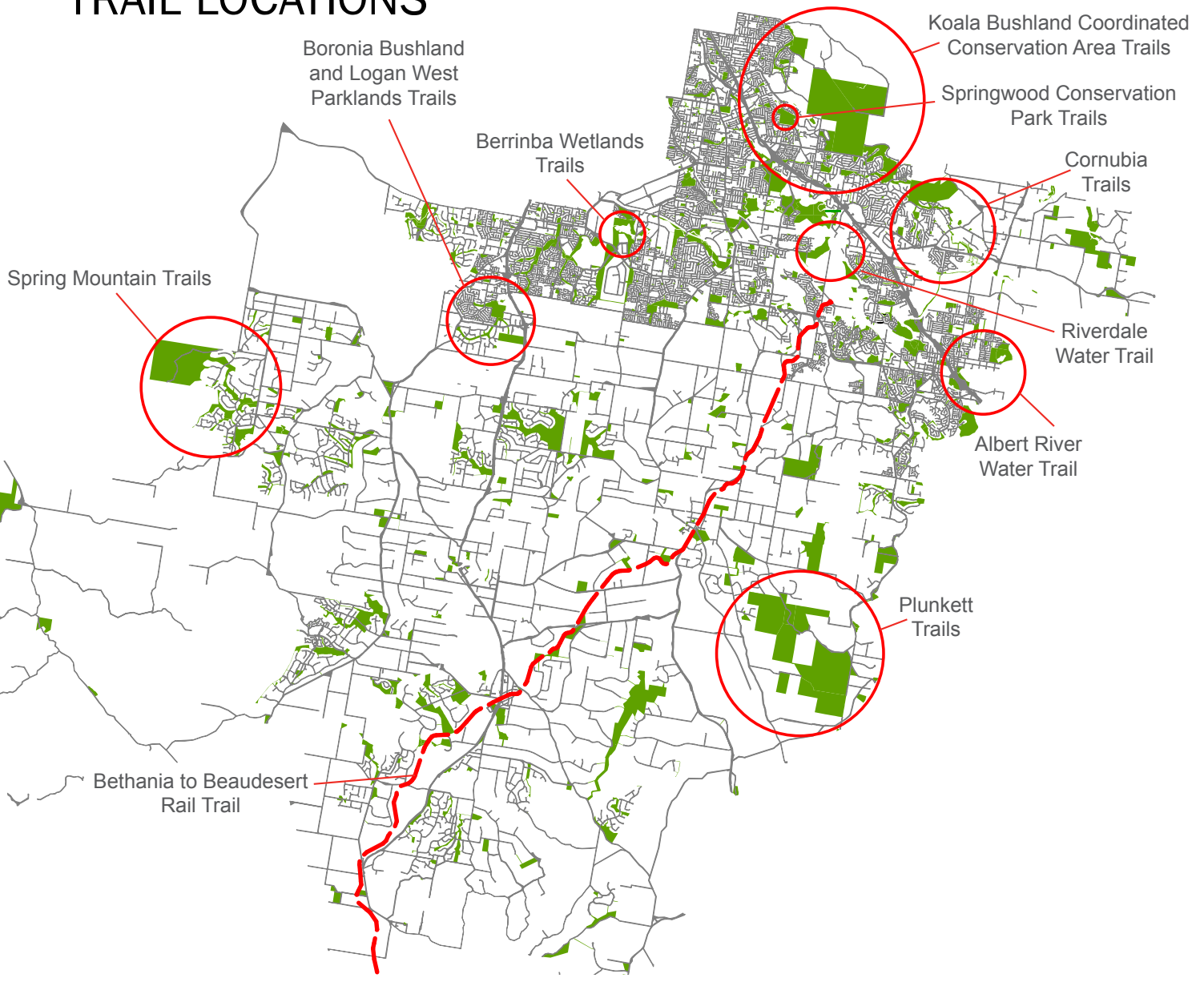
fast facts

Trail users of the Bibbulmun Track, Western Australia's long distance walk trail, inject \$39 million a year into the Western Australian economy. The initial one-off investment was only \$5 million by the WA Government.

(Bibbulmun Track Foundation 2009).



TRAIL LOCATIONS



IMPLEMENTATION - STAGE 1

GREAT SHORT WALKS OF LOGAN TRAILS MARKETING PROGRAM

Snapshot

In order to maximise usage of the Logan City Trails Network it is necessary to ensure that local people and tourists know of the trails existence. To facilitate this usage, a marketing and promotional campaign is proposed.

Recommendations

The purpose of the marketing and promotional campaign is to create awareness of the attractions of the City, and the means of accessing them via the trails. It will generate local support and enthusiasm for the project, as well as generating state-wide promotional coverage of the project through local and state media and the formation of partnership opportunities through networking.

Trail Brochure

A series of trail brochures, or a booklet, is recommended to support the trails and interpretive signage proposed in this strategy.

Written material, as contained within a brochure or trail guide, will provide information to local people and visitors wanting to use the trails. A high quality trail map / brochure is an essential item for a trail network such as this. It should serve a dual purpose, functioning as:

- A promotional tool, to alert local people and visitors to the presence of the trail network and the experience on offer; and
- A basic route-finding map, of sufficient clarity to guide people around the trail.

Marketing Program

Components of the marketing plan may include:

- Develop logo and design standards.
- Market planning and target marketing.
- Develop a 12-month promotional program to promote trails and other facilities, including targeted advertising, listing of websites, briefing and information distribution to visitor information outlets, publicity program including mainstream print and radio media.
- Membership Fees - Establish links with visitors' centres and Queensland tourism network through payment of appropriate memberships.
- Industry Familiarisation Program - Develop familiarisation program for tourism industry network eg. local visitor centres, Queensland tourism, RACQ, media.
- Postcard Promotion - design, print and distribute postcards promoting the trails to local residents targeting visiting friends and relatives market.
- Brochure Distribution - contract specialist brochure distribution firm/s for targeted brochure delivery to key information outlets throughout Queensland.



TRAIL 1 - BORONIA BUSHLANDS AND LOGAN WEST PARKLANDS TRAIL

Snapshot

- Logan West Parklands is a recently purchased parcel of land being masterplanned.
- The Boronia Bushland Reserve has an existing sealed shared use path that runs around the reserve.
- This provides local residents with a quiet bushland retreat.
- The trail features a number of interpretive signs and wildlife can be observed in the Reserve.



Recommendations

This project proposes to connect three activity areas - Logan West Parklands, Bellevue Park and Boronia Bushland Reserve through a series of existing and new shared use trails.

Boronia Bushland Reserve

- Create a loop trail in existing Bushland in the centre of the Reserve.

Logan West Parklands

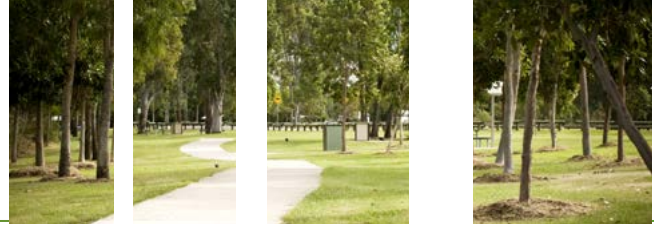
- Create a loop trail in existing bushland on the Western portion of the park.
- Develop a sealed shared use trail to the North linking Logan West Parklands to the existing network which connects to Boronia Bushland Reserve.
- Trail planning process should investigate providing shared use trail connections from Logan West Parklands to Princeton Drive.

Bellevue Park

A number of minor improvements to the existing trail connection to Bellevue Park to enhance the user experience including -

- Installing road and distance signage at road crossings along the existing trail.
- Install a trailhead sign with map at Bellevue Park.





TRAIL 2 - CORNUBIA TRAILS

Snapshot

- Cornubia Forest Park and its surrounds can be developed into multiple trails which can provide a range of opportunities.
- An existing bikeway on the southern end of Cornubia Forest Park provides a short pleasant bike ride and walk along an attractive creek.
- The disused California Creek Road Quarry provides an open space resource that may be suitable for possible trail development.

Recommendations

The Cornubia Trails project proposes to connect all three nodes of activity through a series of existing and new trails. A new circumferential walk trail is proposed for Cornubia Nature Reserve.

Within the California Creek Road Quarry a relatively short but interesting and demanding mountain bike trail is proposed. A possible creek side walk trail could also be developed. Some improvements to the existing shared use trail along the creek could provide another trail opportunity, while development of a walk trail within the southern edge of Cornubia Forest Park would provide a further trail opportunity. A formal trailhead could be developed at the quarry allowing trail users to park and access all three trail opportunities.

Cornubia Nature Reserve

- Create a loop trail in the existing bushland around the waterhole.

California Creek Road Quarry

- Determine the future use of the disused California Creek Road Quarry with a view to providing a sustainable trail network within the quarry reserve.
- Create mountain bike trails within the reserve.
- Develop a formal trailhead at the entrance to the quarry reserve to serve trail users.
- Develop a formal road crossing for California Creek Road.

Existing creek side shared path (Parkview Crescent)

- Install better directional signage on access roads.
- Install a range of on-trail directional signage, especially at trail junctions.
- Install on-trail distance signage showing distance to road entries. Such signage lets trail users know how far they have come along the trail and how far they still have to go.







TRAIL 3 - PLUNKETT TRAILS

Snapshot

- Plunkett Reserve is managed by the Queensland Parks and Wildlife Service (QPWS - Department of Environment and Resource Management).
- The Reserve consists of three properties – Plunkett Conservation Park, Wickham Forest Reserve and Wickham Timber Reserve.
- Plunkett Conservation Park contains trails that are included within the SEQ Horse Trail Network.



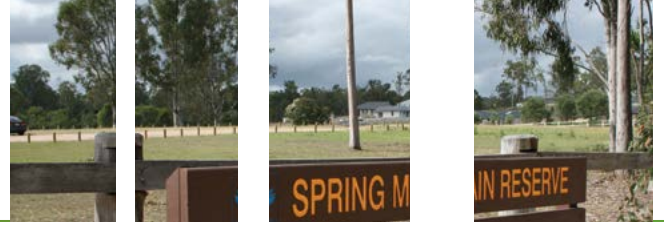
Recommendations

This project proposes to develop a detailed development plan indicating new trail locations within Plunkett Reserve.

This project recommends that:

- The existing tracks are developed to provide an internal horse riding circuit and mountain bike loop trail aimed at the 'family' rider market.
- Detailed trail planning needs to occur to cater for the likely demand from residents especially in the western end of the reserve which adjoins the proposed Yarrabilba development.
- Detailed trail planning needs to occur to ensure the protection of the environmental values.





TRAIL 4 - SPRING MOUNTAIN FOREST PARK TRAILS

Snapshot

- Spring Mountain Forest Park is an 800 hectare open space reserve in the north-western part of Logan City.
- It contains a number of vegetation communities of significance.
- It provides a unique opportunity to develop a trail system that can draw users from the City and beyond.
- Spring Mountain Forest Park provides an opportunity to develop mountain bike and horseriding trails.

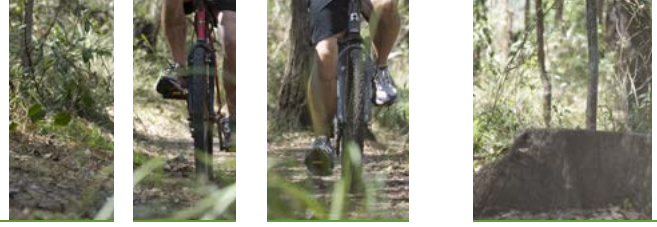
Recommendations

This project proposes to develop a detailed development plan indicating new trail locations within Spring Mountain Forest Park.

Within the development plan attention needs to be given to the following:

- Access points.
- A formalised trailhead with good access.
- Prevention of motorised vehicle access.
- Vegetation communities of significance will need to be located and avoided in the planning work.





TRAIL 5 - KOALA BUSHLAND COORDINATED CONSERVATION AREA (DAISY HILL)

Snapshot

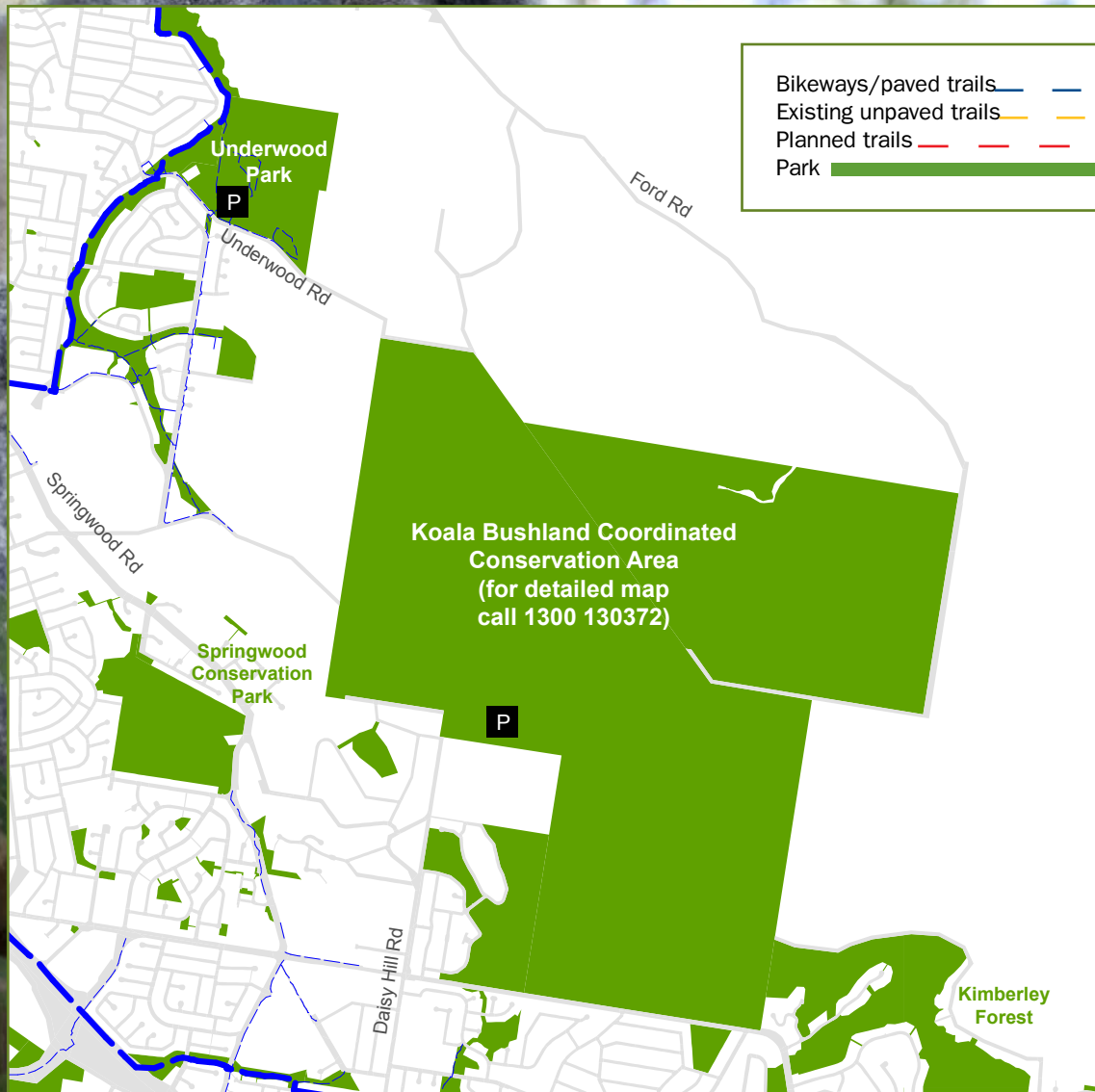
- Koala Bushland Coordinated Conservation Area provides an existing unique resource for all three main trail user groups (walkers, mountain bike riders and horse riders).
- It is particularly popular with mountain bike riders providing a range of rides of different trail lengths and challenges.

Recommendations

Suggested improvements to the trails include:

- Provide colour codes and/or logos on trail directional markers to improve useability.
- Distance signage on the longer trails would assist trail users in knowing how far they have to travel.
- Provide a grading system for mountain bike trails in particular.
- Improvements to the maps, like one way arrows and trail names are needed.
- All trails should be named (on mapping and on-trail).
- Promote greater use of the conservation area during the week.
- There is limited interpretation in the conservation area. Interpretation enriches trail users' experience and a high visitation park such as Koala Bushland Coordinated Conservation Area presents a very good opportunity to provide education.
- The network of trails in Underwood Park should be rationalised and connections to Koala Bushland Coordinated Conservation Area along the unformed part of Underwood Road should be investigated in detail and constructed if feasible.



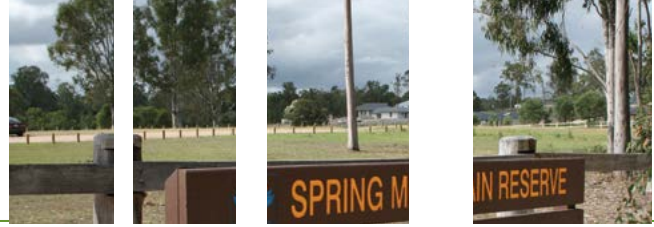


Bikeways/paved trails

Existing unpaved trails

Planned trails

Park



TRAIL 6 - ALBERT RIVER WATER TRAIL

Snapshot

- The Albert River provides an opportunity for a water trail taking users to various natural sites along the river.
- This water trail connects Eagleby Wetlands reserve to the Albert River Park at Ramu Street.
- It takes advantage of two existing pontoons with associated facilities to launch canoes.
- The upstream pontoon is located at Albert River Park in Eagleby.
- The downstream pontoon is located at Eagleby Wetlands.
- There is also a range of other facilities such as barbecues, toilets and picnic shelters located at Albert River Park.

Recommendations

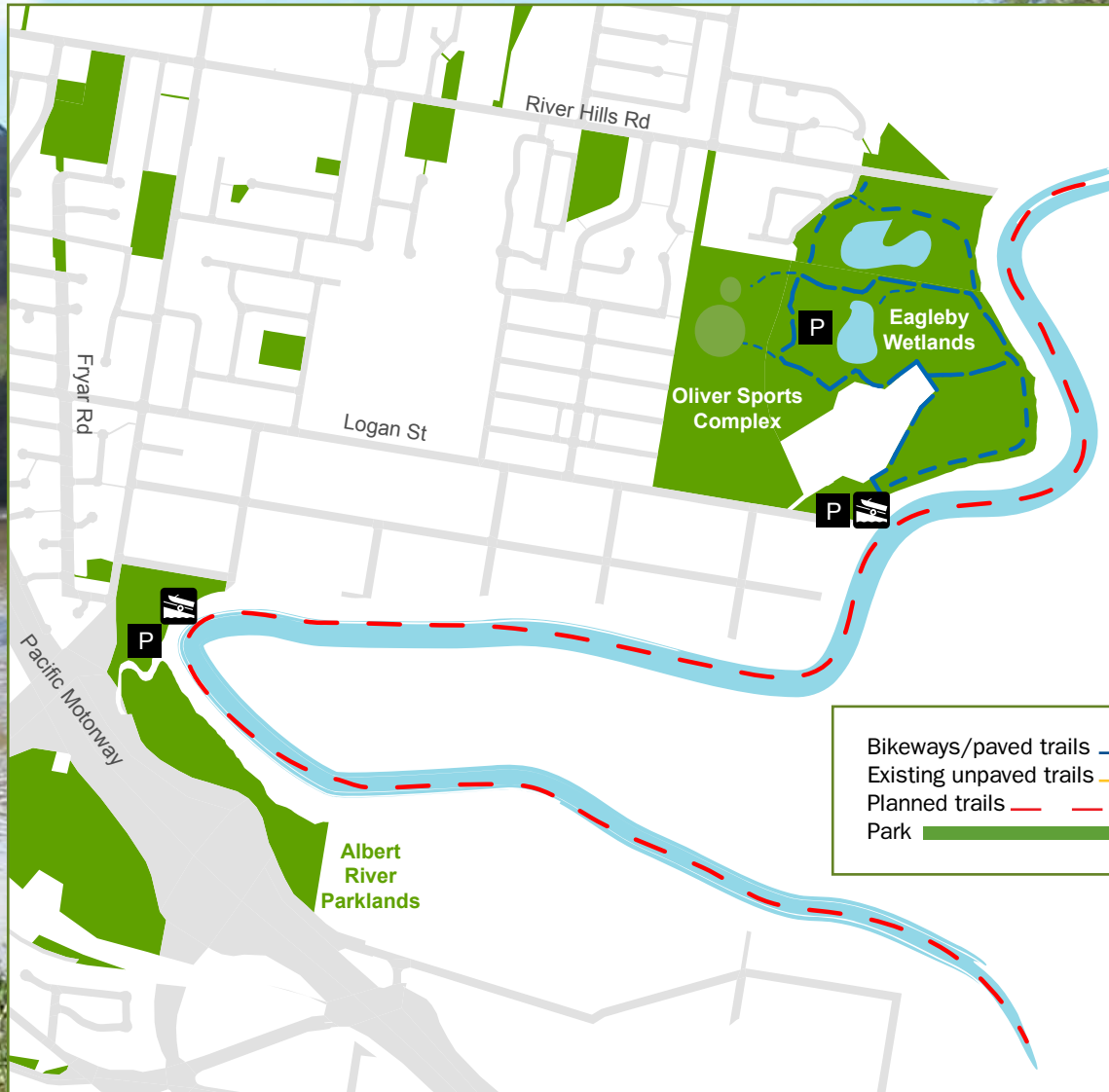
This project proposes a trail development plan and to construct a water trail between Albert River Park and Eagleby Wetlands.

The trail would develop to extend upstream and downstream from either ramp at Albert River Park or Eagleby Wetlands.

The development plan and construction would include:

- Trail 'construction' for the proposed water trail (notably trailhead signage).
- Installation of floating interpretive panels.







TRAIL 7 - BERRINBA WETLANDS TRAILS

Snapshot

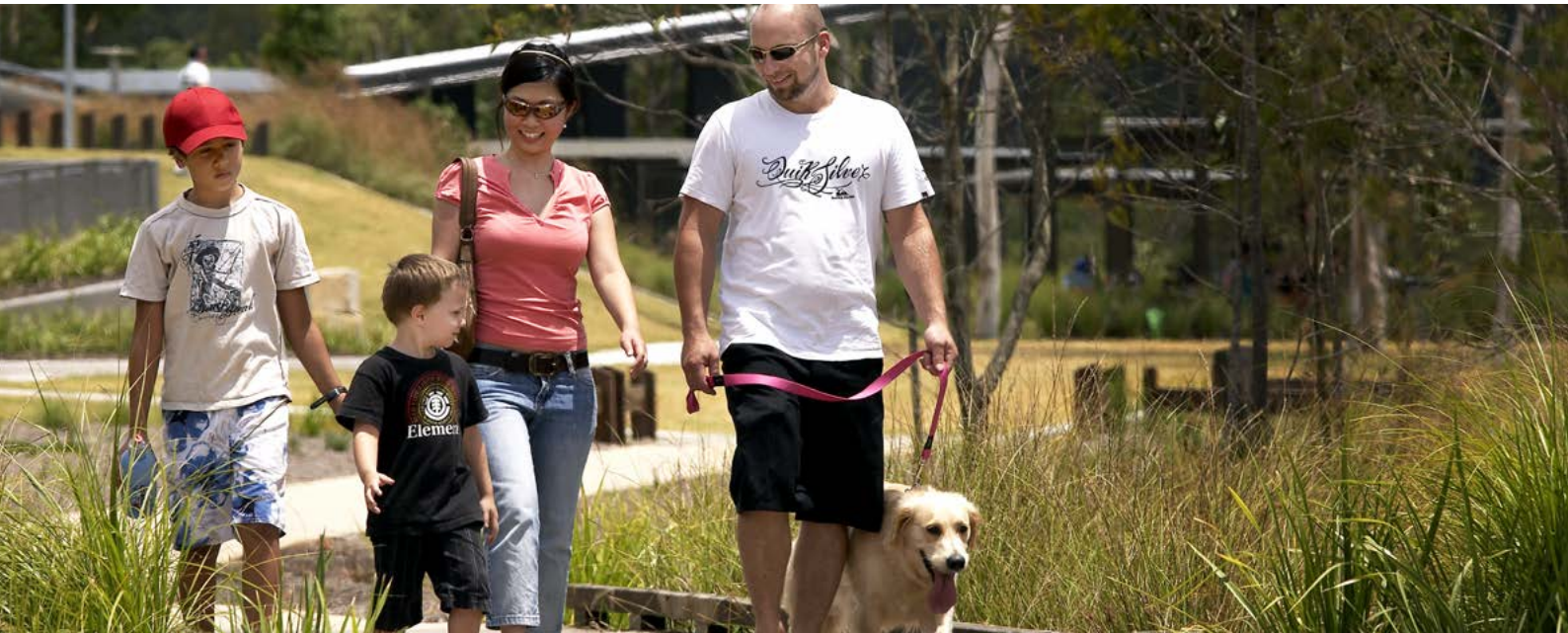
- Berrinba Wetlands, located in SW1 Enterprise Park, provides an existing high quality trail experience.
- There are a number of high quality trails focussing on the wetlands.
- The Greater Wetland Walk circumnavigates the wetland, providing a 2.8 km pleasant walk and cycle experience.
- Three smaller trails are located adjacent to the Billabong Outlook Precinct. The Wetland Outlook Circuit provides a 900m circuit, the Billabong Outlook Circuit provides a 750m trail and the Bushland Experience Paths provides several small paths totalling 1900m.
- All trails are sealed providing easy access for walkers, runners, cyclists, and people in wheelchairs and pushing strollers. A number of bikeways pass through the wetland connecting to other suburbs around the Enterprise Park.

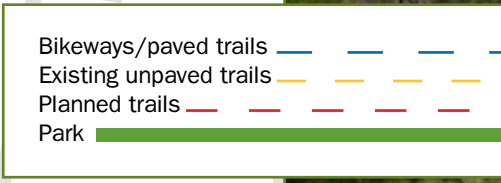
Recommendations

This project proposes a number of improvements to make the Berrinba Wetlands Trail experience even more accessible and enjoyable.

Suggested improvements include:

- Install directional signage on all major roads near the Wetlands to notify potential users of the trails' existence.
- Install a range of on-trail directional signage.
- Install on-trail distance signage. Such signage lets trail users know how far they have come along the trail and how far they still have to go.
- Install on-trail interpretation.
- Improve promotion of the network.







TRAIL 8 - SPRINGWOOD CONSERVATION PARK TRAILS

Snapshot

- Springwood Conservation Park is a 36 hectare reserve in the middle of urban development.
- The park is characterised by interesting terrain, flowering plants, and Planchons Stringybark (one of only two places in Logan City where this eucalypt grows).
- There is an existing network of graded walk tracks in the park to allow people to explore the bush.
- A lookout above the old quarry provides good views, while wheelchair access is provided along a section of one trail.

Recommendations

This project proposes a number of improvements to make the Springwood Conservation Park Trail experience more accessible and enjoyable.

Suggested improvements include:

- A rationalisation of the on-trail signage system. There are a number of routed signs with numbers on them along the trail; it is not clear what these numbers refer to.
- Install better directional signage on access roads.
- Install a range of on-trail directional signage, especially at trail junctions.
- Install on-trail distance signage showing distance to road entries. Such signage lets trail users know how far they have come along the trail and how far they still have to go.
- Install additional on-trail interpretation. Topics could include banksias, the site's history as a quarry, and some interpretation at the lookout.
- Interpretative signs would add to the trail experience. Council's Parks Branch has an ongoing graffiti removal program and it is acknowledged that graffiti is a recurrent problem.
- Improve promotion of the network.





- Bikeways/paved trails — — — — —
- Existing unpaved trails - - - - -
- Planned trails - - - - -
- Park [Green shaded area]



TRAIL 9 - RIVERDALE WATER TRAIL

Snapshot

- The Logan River provides a number of opportunities for a water trail taking users to various natural sites along the river.
- This water trail focuses on Slacks Creek as it provides an attractive, narrow and relatively natural corridor for canoeists.
- This trail takes advantage of two public access facilities along the Logan River. Users can launch from either the existing pontoon at Riverdale Park or from a public boat ramp at Tansey Park.
- Riverdale Park provides a range of facilities, such as parking facilities, barbecues, toilets and picnic shelters in an attractive semi-natural setting, making it an ideal base.

Recommendations

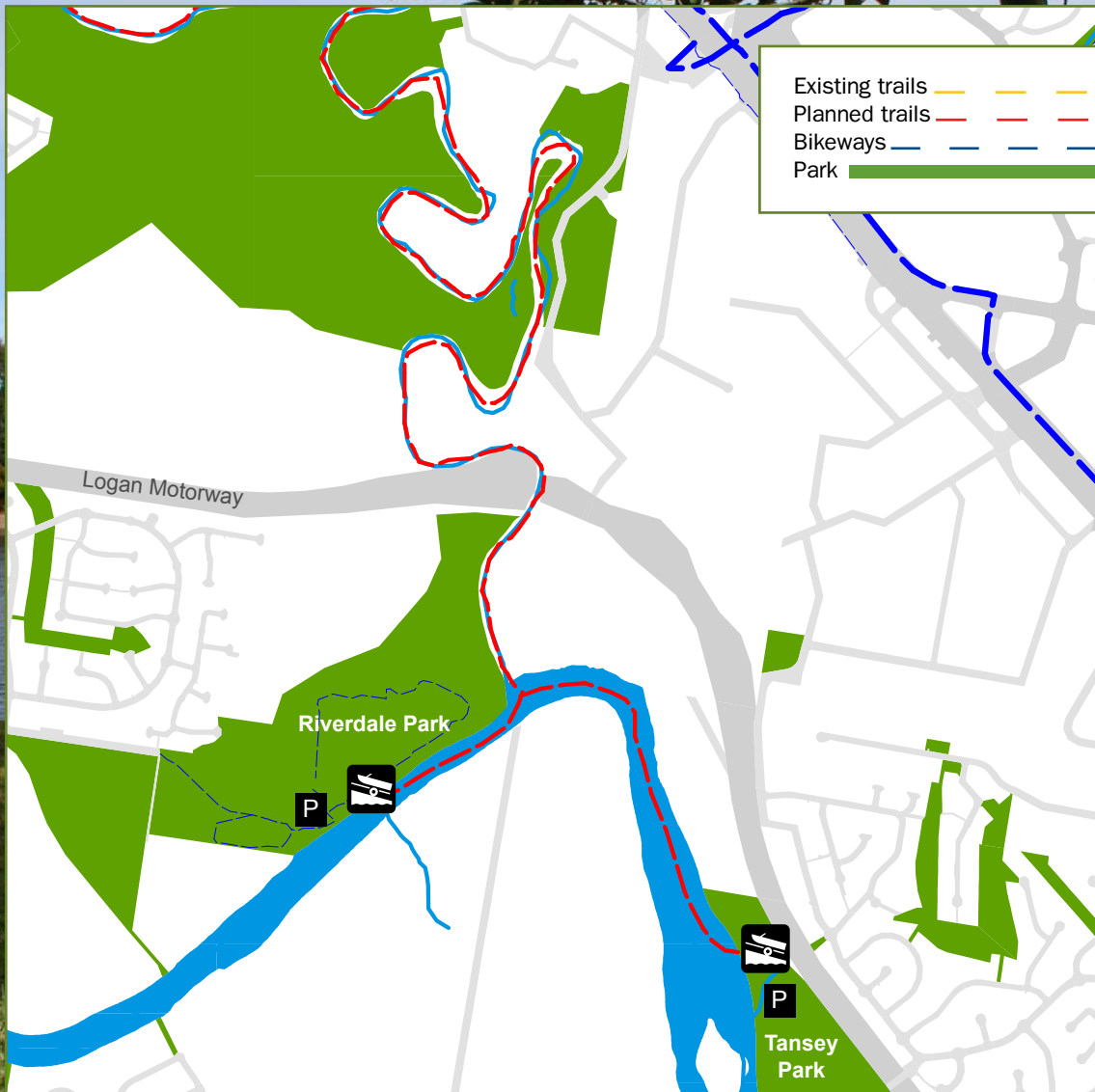
This project proposes a trail development plan and to construct a water trail at Riverdale Park.

This water trail would primarily be an 'out and back' trail along Slacks Creek. It provides a unique opportunity to 'see' the reserve and appreciate its natural values while not setting foot on it. Trail distance can extend upstream from this point to deliver a trail experience of any length.

The development plan and construction would include:

- Trail 'construction' for the proposed water trail (notably trailhead signage).
- Installation of floating interpretive panels.







TRAIL 10 - BETHANIA TO BEAUDESERT RAIL TRAIL

The Bethania to Beaudesert Recreation Pathway was not initially identified as one of the 19 projects within this Recreation Trails Strategy. This strategy however does support the potential development of the rail trail. A detailed business case was developed to determine whether a recreation pathway could be established along the disused rail corridor between Bethania and Beaudesert. Throughout the life of this strategy Council's priorities may change and projects such as this can be incorporated in the future.

A number of factors supporting the development of the rail trail include:

- The Corridor is situated in a relatively scenic landscape, providing views of the Scenic Rim for much of its southern sections. It passes through hills and valleys, forested areas, a variety of farmland and the attractions of the former railway.
- The railway corridor offers a pleasant trail experience being the ideal distance between towns and could become a significant recreation resource in a rapidly growing community.
- The corridor is easily accessible via the existing road and rail system and is within a half day's drive of many of the major population centres in South East Queensland.
- The trail has the potential to inject significant money into the local economy from local, day-trip and overnight visitors.
- Cycle commuting on a sealed trail has the potential to be a significant component of the corridor, particularly in the section from Bethania to Dairy Creek Road, Waterford and linking to future development of Yarrabilba.
- Some 5,000 students have easy access to the rail corridor, and a further seven schools could use the corridor for activities.
- The corridor passes through a number of settlements, and together with possible trailheads at these towns, a variety of rides/walks of different lengths are possible.

Snapshot

The Bethania to Beaudesert rail corridor is 43km and extends from Bethania in Logan City to Beaudesert in the Scenic Rim Regional Council. The northern point of the corridor is adjacent to the Bethania railway station within Logan City Council urban area. The rail corridor traverses the urban area to the south and then into the rural residential areas between Bethania and Logan Village. The corridor runs through the townships of Logan Village, Jimboomba, and terminating in Beaudesert.

- Conversion to a rail trail provides an opportunity to address some of the negative impacts currently being experienced by adjoining landholders, notably noise from illegal trail bike riding.
- The major elements of the railway infrastructure remain (the formation, cuttings, embankments and most of the bridges and culverts).
- There is potential for interpretation along the rail trail, adding to and enriching the experience of trail users.
- The corridor provides for a variety of lengths of walks and rides and there is great flexibility of use options.

Recommendations

At its meeting of 30 March 2010, Council resolved to proceed with the Phase 2 of the Bethania to Beaudesert Rail Trail Feasibility Study. Outcome from the study will be submitted to Council by the end of 2010.





IMPLEMENTATION - STAGE 2

YEARS 6-10 - LOCAL TRAIL PROJECTS

Overview

This strategy recognises that Logan City Council and its residents may want to develop local trails i.e. trails that attract people who live close by rather than ones who may travel some distance.

Details

Stage 2 of the strategy has recommended 9 projects. These are:

Crestmead Trails Design and Development Project

Project proposes to identify the preferred location for a shared use trail to extend the existing trail running along Crestmead Park's northern boundary.

Eagleby Wetland Path Enhancement Project

Project proposes to rationalise the existing track along the Albert River and to seal the designated trails to create a number of loop trails within the wetland reserve.

Greenwood Lakes Trail Design and Development Project

Project proposes to enhance the existing trail and to construct a new trail to create a loop around the two large water bodies along Oxley Creek.

Quinzeh Creek Trail Design and Development Project

Project proposes to identify the preferred location for a multi-use trail traversing the open space reserve and potentially linking other formal open space reserves in the area.

Gould Adams Park Trail Enhancement Project

This project proposes connections to the Kingston Butter Factory and Kingston Railway Station and improved signage and promotion.

Wearing Park Trail Enhancement Project

This project proposes the enhancement of the existing multi-use trail traversing Wearing Park.

Henderson Water Trail Design and Development Project

The Logan River provides a number of opportunities for a water trail taking users to various natural sites along the river. The water trail takes advantage of a public boat ramp along the Logan River at Henderson Park.

Jimboomba Water Trail Design and Development Project

This water trail takes advantage of a publicly accessible section of the Logan River at Cusack Lane, Jimboomba.

The Tinnie Trail – a drive trail project

This project proposes to turn the Tinnie Trail along the Logan River into a Drive Trail which would be perfect for delivering interpretation of the many facets of life and industry along the river.

ACKNOWLEDGEMENTS

As a local government authority, Logan City Council acknowledges that it is well positioned to investigate, identify and determine the future direction for the benefit of all residents and visitors.

The Recreation Trails Strategy could not have been developed without the involvement of a number of key groups and individuals.

- Councillors and Mayor - Logan City Council.
- Deputy CEO Community & Customer Services.
- Key staff from the following Branches - Parks, Major Venues & Facilities, Community Services, Strategy & Planning, Environment & Sustainability, Road Infrastructure Planning & Community Engagement & Marketing.
- Surrounding Councils including Redlands, Brisbane, Gold Coast, Ipswich and Sunshine Coast (benchmarking).
- State Agencies including Dept of Infrastructure & Planning, Dept Communities - Sport & Recreation Services, Department of Environment and Resource Management.
- Queensland Outdoor Recreation Federation

REFERENCES

Bibbulmun Trail Foundation (2004) "Survey Results confirm Bibbulmun Track's increasing overseas profile" Bibbulmun News Issue 35 Autumn 2004

Department of Communities, Sport and Recreation Services
www.sportrec.qld.gov.au

Department of Environment and Resource Management
www.environment.gov.au

Department of Infrastructure and Planning
www.dip.qld.gov.au

Department of Innovation, Industry, Science and Research
www.ausindustry.gov.au

Gold Coast City Council and Beaudesert Shire Council (2002) Gold Coast Beaudesert Integrated Trails Strategy

Local Government Act
www.legislation.qld.gov.au/LEGISLTN/ACTS/2009/09AC017.pdf

Logan 2026 City Directions
www.logan.qld.gov.au/NR/rdonlyres/CFD913D6-48C6-4E8E-86FD-2A6E43A1E3E5/0/Logan2026CityDirections.pdf

Logan City Council Corporate Plan 2009 - 2013
www.logan.qld.gov.au/NR/rdonlyres/568ABB5D-AC0A-49BC-9855-7873957C8E05/0/corporateplan20092013.pdf

Queensland Outdoor Recreation Federation
www.qorf.org.au

South East Queensland Outdoor Recreation Strategy
www.dip.qld.gov.au/regional-planning/outdoor-recreation-strategy

South East Queensland Regional Plan
www.dip.qld.gov.au/regional-planning/regional-plan

South East Queensland Regional Trails Strategy
www.dip.qld.gov.au/resources/plan/SEQ/Active_Trails_Strategy.pdf

Towards Q2
www.towardq2.qld.gov.au/library/pdf/tomorrow/Towards_Q2_Tomorrows_Queensland.pdf

RECREATION TRAILS 2010-2020