

# Fact Sheet



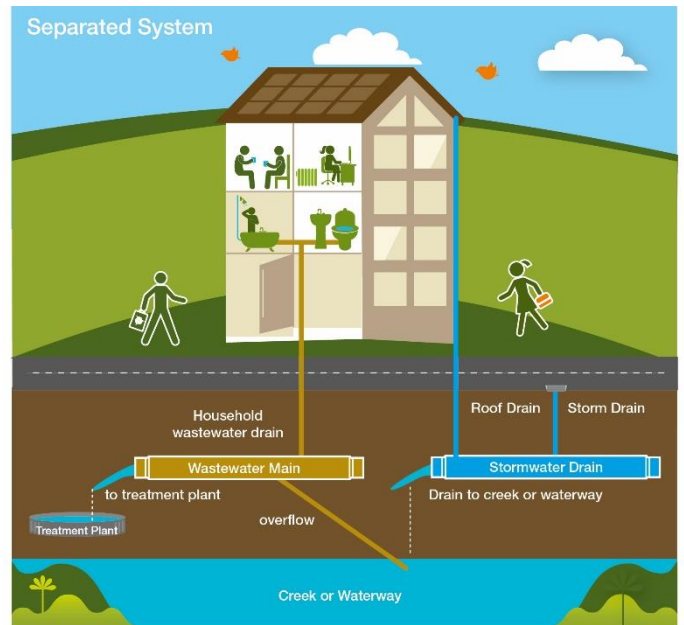
## Wastewater Overflows

**Did you know wastewater and stormwater networks are separate systems, designed differently to do different functions?**

The **stormwater** system takes rainfall runoff from roads, roofs and paved areas to the local creek or waterway.

The **wastewater** system transports urban wastewater, carrying waste from residential, commercial and industrial properties to treatment facilities, where it is treated and either reused or discharged to the environment.

When we experience very heavy rain, a large volume of stormwater often gets into the wastewater network. This can overload the network in severe wet weather events, which increases the chance of an overflow from the wastewater network.



## Our wastewater network

An allowance is made for some stormwater to enter the wastewater system. However, during heavy rain, more than 30 times this allowance can enter the system. This overloads the system and can potentially cause wastewater (combined with stormwater) to overflow, posing potential health and environmental risks.

The Department of Environment and Science (DES) regulates Logan City Council's wastewater treatment plants and associated networks, with strict conditions on overflows. However, DES recognises that some controlled discharges will occur during severe wet weather events and that the public health and environmental risks associated with these discharges are much reduced.

## How does stormwater enter the wastewater network?

Stormwater enters the wastewater network through sources such as illegal roof and property connections, poorly maintained property drains, unsealed manhole lids and leaks in the pipe network due to damage and deterioration.

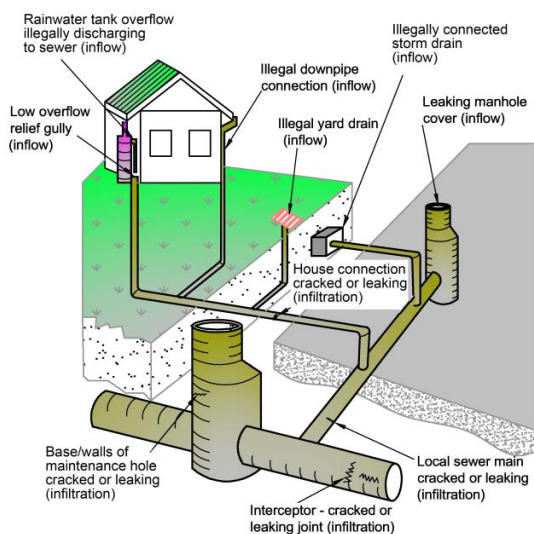
Inflow and infiltration are terms used to describe how stormwater enters the wastewater network.

**Inflow** refers to stormwater entering the wastewater network via defective or illegal plumbing.

**Infiltration** refers to groundwater entering underground infrastructure via cracks and faulty joints.

**We should all make the effort to prevent stormwater from entering the wastewater network.**

## What is Council doing to manage overflows?



Council is committed to managing our wastewater network and controlling overflows to minimise public health risks and protect our natural environment. We do this by:

- maintaining and rehabilitating the wastewater network (repairing broken pipes and manholes).
- renewing old pipes and pump stations.
- providing emergency storage and controlled overflow points.
- monitoring the performance of the network to identify areas with high stormwater inflow.
- working towards reducing stormwater ingress to the wastewater network by targeting the source of inflows.

## What can residents do to manage overflows?

Residents can reduce the inflow of stormwater into the wastewater network by:

- not directing roof water or garden drainage into the wastewater network through overflow relief gullies (ORG).
- replacing faulty and damaged household drainage pipes in their yards.

## Overflows at Customer Properties

The wastewater network can become overloaded during periods of extreme or prolonged rainfall causing overflows within customer's properties. In these cases, overflow relief gullies (ORG), which are part of household sanitary drainage, prevent flows from surcharging into showers and toilets within buildings.

Overflow relief gullies are essentially the 'last line of defence' to protect individual properties. Unfortunately, it is often the case that ORGs are covered (typically with pot plants) or raised or lowered which makes them ineffective. If an ORG does overflow, it is performing the task for which it was designed.

## Related Information

- Overflow relief gullies fact sheet
- Information on Council's webpage: [www.logan.qld.gov.au](http://www.logan.qld.gov.au) (search for Wastewater Overflows and Overflow Relief Gullies Fact Sheets)

Your overflow relief gully is a critical part of your house's sanitary drainage, and is designed to prevent your house flooding with wastewater, so please check it is installed correctly and not covered.

### For More Information:

Phone **3412 3412**

Visit [www.logan.qld.gov.au](http://www.logan.qld.gov.au)

Email [council@logan.qld.gov.au](mailto:council@logan.qld.gov.au)