



**City of Logan Koala Conservation
Strategic Plan
2013–2023**

CONTENTS

The City of Logan's Koalas – Introduction	4
Strategic Fit	5
Our Vision – Looking Forward	6
Our Values – Policy Position	7
Our Strategic Outcomes and Objectives	8
Investing in Our Koala, Our Environment, Our City	18
Our Priorities – Key Areas of Interest	20
Our Plan – Achieving Our Vision	21
Implementation, review and reporting	26

THE CITY OF LOGAN'S KOALAS – INTRODUCTION

Koalas (*Phascolarctos cinereus*) are an iconic Australian animal that call the City of Logan home. The city has a significant koala population and one of the world's largest and respected koala conservation centres located at Daisy Hill Conservation Park.

The social and economic value of koalas to our city and nation is difficult to quantify however, it is undoubtedly significant. This Koala Conservation Strategic Plan (the Plan) aims to ensure the long-term viability of koalas in the City of Logan and demonstrates Council's commitment to koala conservation over the long term.

The City of Logan has significant areas of koala habitat and a diverse range of natural vegetation types that remain largely undisturbed. With over 75% of the city retaining wooded vegetation cover, (approximately 75,000 hectares) we are ideally placed to ensure we provide a proactive, innovative and sustainable approach to koala conservation. Extensive vegetated koala habitat areas in the city include the northern suburbs which form part of the Koala Coast, Carbrook Wetlands in the east, Greenbank Australian Defence Force areas and Spring Mountain Reserve in the west and Plunkett Conservation Park in the south-east.

The aims and objectives of the Plan recognise and acknowledge not only the biodiversity and ecological significance of koalas but also their potential economic value to the city and contribution to city image, community and social well-being.



STRATEGIC FIT

Integrating with existing local, regional, State and Federal programs and plans will ensure the Plan is effective, efficient and able to achieve multiple outcomes. Strategically, the Plan aligns with Council’s long-term corporate outcomes and key strategic documents as outlined in Table 1 below.

Table 1: Strategic Alignment of the Plan

Strategic Document	Strategic Level Link	Strategy
Logan 2026 City Directions	Strategic Theme	Strategic Theme 3: Green & Sustainable In 2026, the City of Logan is a green city. Council is renowned for its stewardship of the natural environment.
Logan City Corporate Plan 2013–2018	Corporate Plan Priority:	Priority: Building our Environment (E)
Logan City Corporate Plan 2013–2018	Corporate Plan Priority Focus:	E2 Build our future wildlife corridors through vegetation, koala and water quality offsets and focussed community partnerships.
South East Queensland Regional Plan (2009 – 2031)	Desired regional outcomes and policies	Measurable targets for the condition and extent of environment and natural resources.
South East Queensland (SEQ) Natural Resource Management (NRM) Plan (2009 – 2031)	Desired regional outcomes and policies	Targets include maintaining and improving conservation status of native species and maintaining or increasing habitat for priority species.
Queensland’s Ecotourism Plan (2013 – 2020)	Vision and strategic priorities	Strategic priorities include facilitating investment into ecotourism products and embracing a partnership approach.
State Planning Policy Dec 2013	State interest – biodiversity	Facilitating a net gain in koala habitat in the South East Queensland region and maintaining or enhancing ecological connectivity.
South East Queensland Koala Conservation State Planning Regulatory Provisions (SPRP)	Mandatory Statutory Document under the Sustainable Planning Act 2009	Regulates development and outlines development assessment requirements that minimise the impacts of new development on koalas and koala habitats in the Koala Coast area.
Offsets for Net Gain of Koala Habitat in South East Queensland Policy	Queensland State Policy	Incorporates the requirements for koala habitat offset to ensure a net gain in bushland habitat within the planning area is achieved
Australia’s Native Vegetation Framework 2012	National framework to guide the ecologically sustainable management of Australia’s native vegetation	Goals include increasing the national extent and connectivity of native vegetation and maintaining and improving the condition and function of native vegetation.
National Wildlife Corridors Plan 2012	Australian Government’s framework to retain, restore and manage ecological connections in the Australian landscape	Vision: Diverse, connected and healthy landscapes that support and sustain biodiversity, communities and wellbeing.

A close-up photograph of a koala clinging to a tree trunk. The koala has grey, fluffy fur and large, dark brown eyes. It is looking directly at the camera. The tree trunk is brown and textured. The background is a soft, out-of-focus green.

OUR VISION – LOOKING FOR- WARD

The Koala Conservation Strategic Plan aims to ensure the long-term viability of koalas in the City of Logan by providing a framework with quantifiable outcomes, objectives and deliverable actions.

Development of the Plan has been undertaken to align with the State Planning Policy December 2013. The Plan will demonstrate how Council will contribute to facilitating a net gain in koala habitat in the South East Queensland region and to maintaining or enhancing ecological connectivity.

OUR VALUES – POLICY POSITION

The City of Logan's koalas are highly valued by the community as reflected through the 'Logan Listens: Residents' survey results in 2010, 2011 and 2012 which recorded a high importance (top 5) of bushland and environmental values. These values were echoed again during the '2011 Waterways Summit' where participants advocated that waterway riparian areas provide ideal natural ecological corridors throughout the city.

A coordinated strategic plan will help to ensure that these values are sustained into the future by:

- Aligning and integrating Council's strategies to build our future wildlife corridors through vegetation and koala habitat offsets to ensure multiple and shared outcomes;
- Providing a focus for regional wide collaboration and partnership;
- Supporting regional investment opportunities;
- Guiding implementation actions, performance evaluation and reporting;
- Enabling a platform for community consultation and engagement; and
- Supporting initiatives for community involvement and participation.

The development of this Plan demonstrates the commitment to the significant biodiversity and ecological value of koalas to the city. This Plan aims to maximise community pride for our resident koalas and the economic benefit to city image, community and social well-being.



OUR STRATEGIC OUTCOMES AND OBJECTIVES

The Plan is based on achieving the following key strategic outcomes:

- **SO 1** – Improved science of koala ecology and habitat requirements in the City of Logan;
- **SO 2** – Increased quality protected koala habitat in the City of Logan;
- **SO 3** – Improved koala safety and health; and
- **SO 4** – Increased positive community engagement and awareness of koala conservation actions.

Strategic Outcome 1: Improved science of koala ecology and habitat requirements in the City of Logan

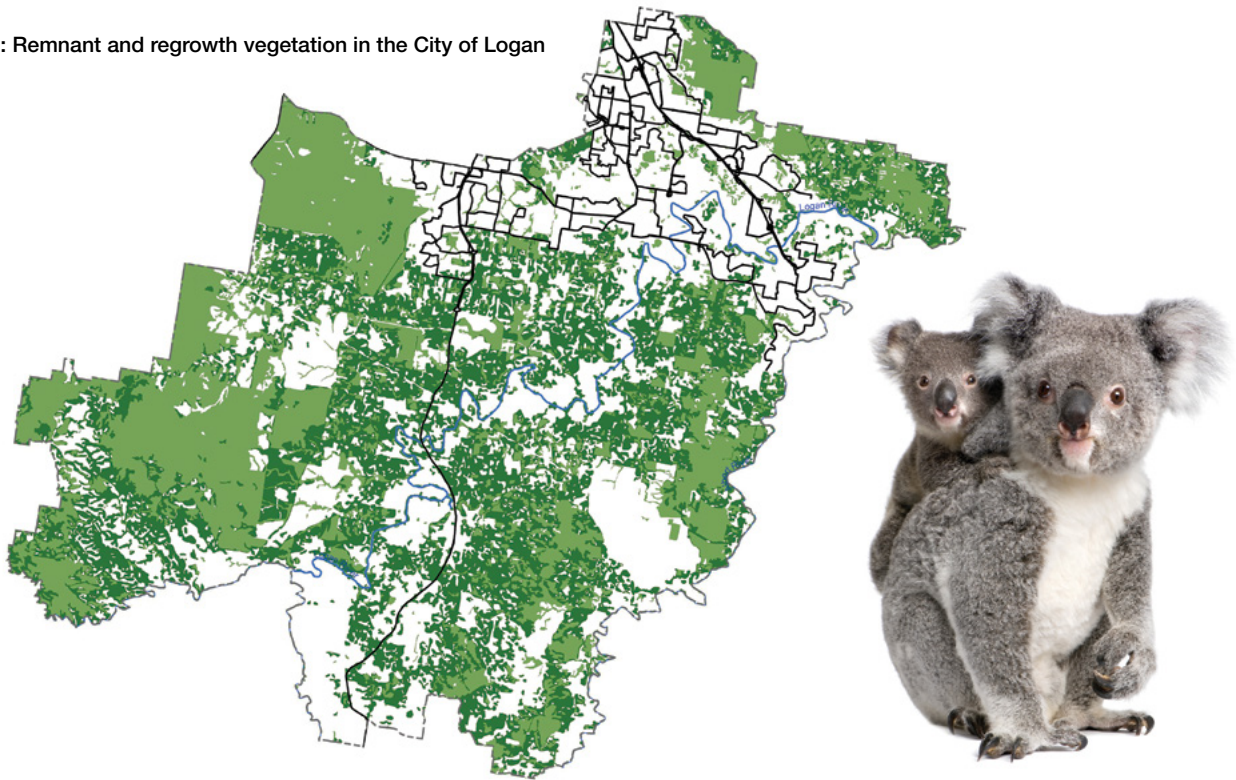
In the City of Logan, koalas are most frequently sighted in the eastern suburbs of the city including Daisy Hill, Shailer Park, Carbrook, Priestdale and Cornubia.

The higher number of sightings in this part of the city could be attributed to the increased likelihood of koala-human encounters reflective of the higher community density. Koala populations across the southern and western parts of the City of Logan are not as well understood, although 'hot-spots' are thought to exist in some locations along Slacks Creek, Scrubby



Creek, and in the Greenbank Military Training Area. It is important to note that current data on koala presence in the City of Logan is mostly anecdotal and not a result of targeted scientific surveys. Significant areas of koala habitat in the city are identified in Figure 1 utilising State government endorsed Remnant Vegetation mapping of Regional Ecosystems with a predominance of vegetation species from the genera Eucalyptus, Corymbia, Angophora, Lophostemon, Melaleuca and Leptospermum.

Figure 1: Remnant and regrowth vegetation in the City of Logan

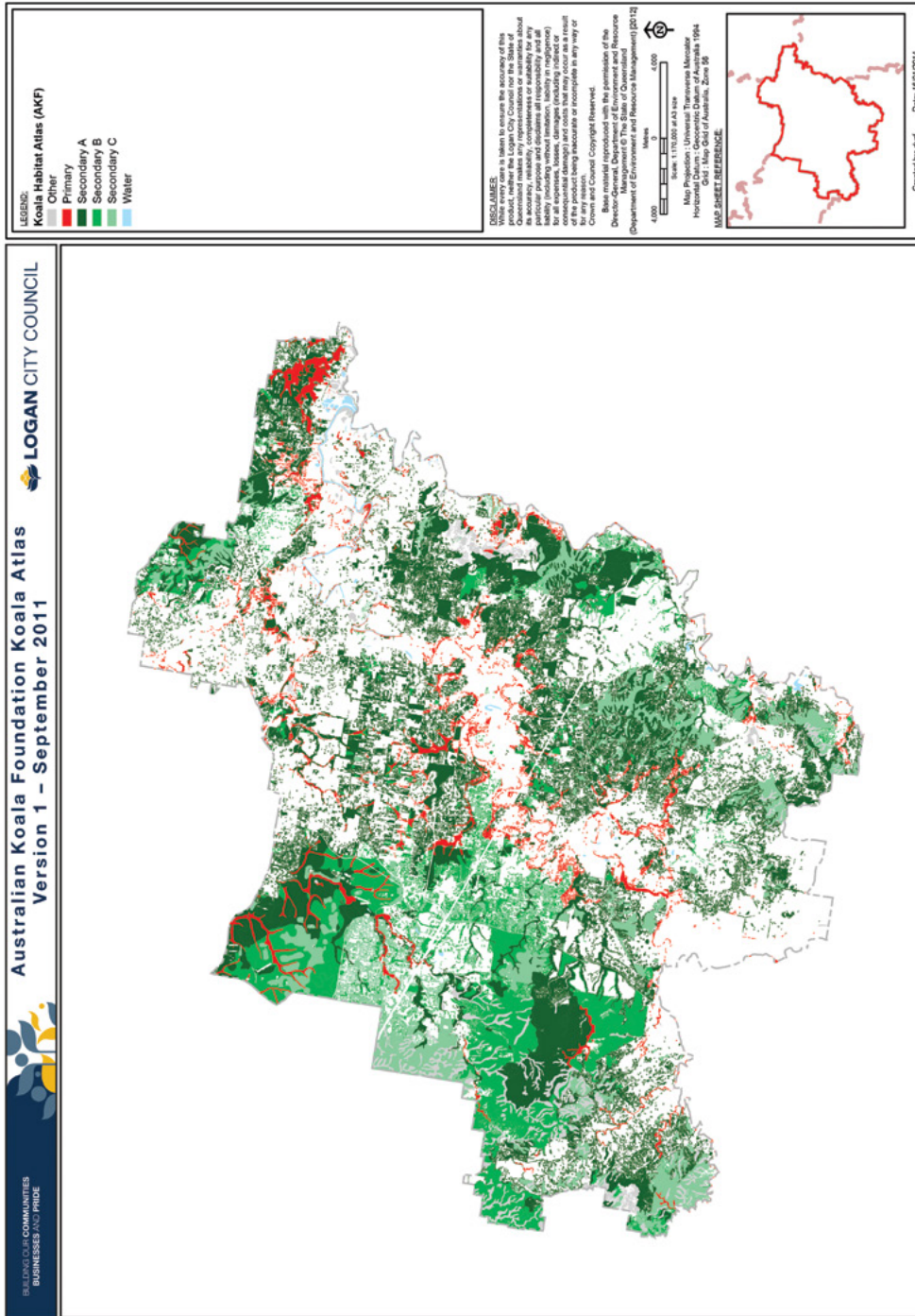


To improve understanding of koala ecology and habitat across the city, Council will:

- Identify and accurately map koala habitat that reflects koala habitat values and utilises a number of modern methods and technologies;
- Identify and map koala populations and densities in the City of Logan;
- Support long term monitoring of koala populations to increase the understanding of population dynamics and the influence of impacts such as disease and drought on populations;
- Support active management of koala populations to maintain genetic diversity, and long term viability; and
- Support reputable koala research that contributes to the body of koala knowledge.

Koala habitat values across the city have been identified using the Australian Koala Foundation mapping (Figure 2). This mapping is considered to be the best base mapping for the city as it is based on regional ecosystem types, includes remnant vegetation and high value regrowth vegetation, recognises the importance of Landzone 3 – alluvial soils, identifies that riparian areas are core habitat for koalas and uses a peer-reviewed scientific methodology.

Figure 2: The City of Logan Koala Habitat Values Map



Strategic Outcome 2: Increased quality protected koala habitat in the City of Logan

To achieve a net increase in koala habitat in the city and South East Queensland it is essential that a regional approach is undertaken and areas of koala habitat are connected through ecological corridors.

To achieve this strategic outcome Council will:

- Identify, protect and enhance a functional koala habitat network with targeted koala habitat and corridors protected through planning scheme provisions. A biodiversity areas overlay, code and mapping that identifies both broad regional corridors and specific koala corridors, both of which ensure protection of all koala habitat;
- Provide a hierarchy of protection and enhancement of koala habitat and corridors integrated with the city's waterway and wetland corridors;
- Identify and target revegetation in strategic koala habitat corridors through planning scheme codes, policies and the use of innovative, flexible solutions such as environmental offsets;

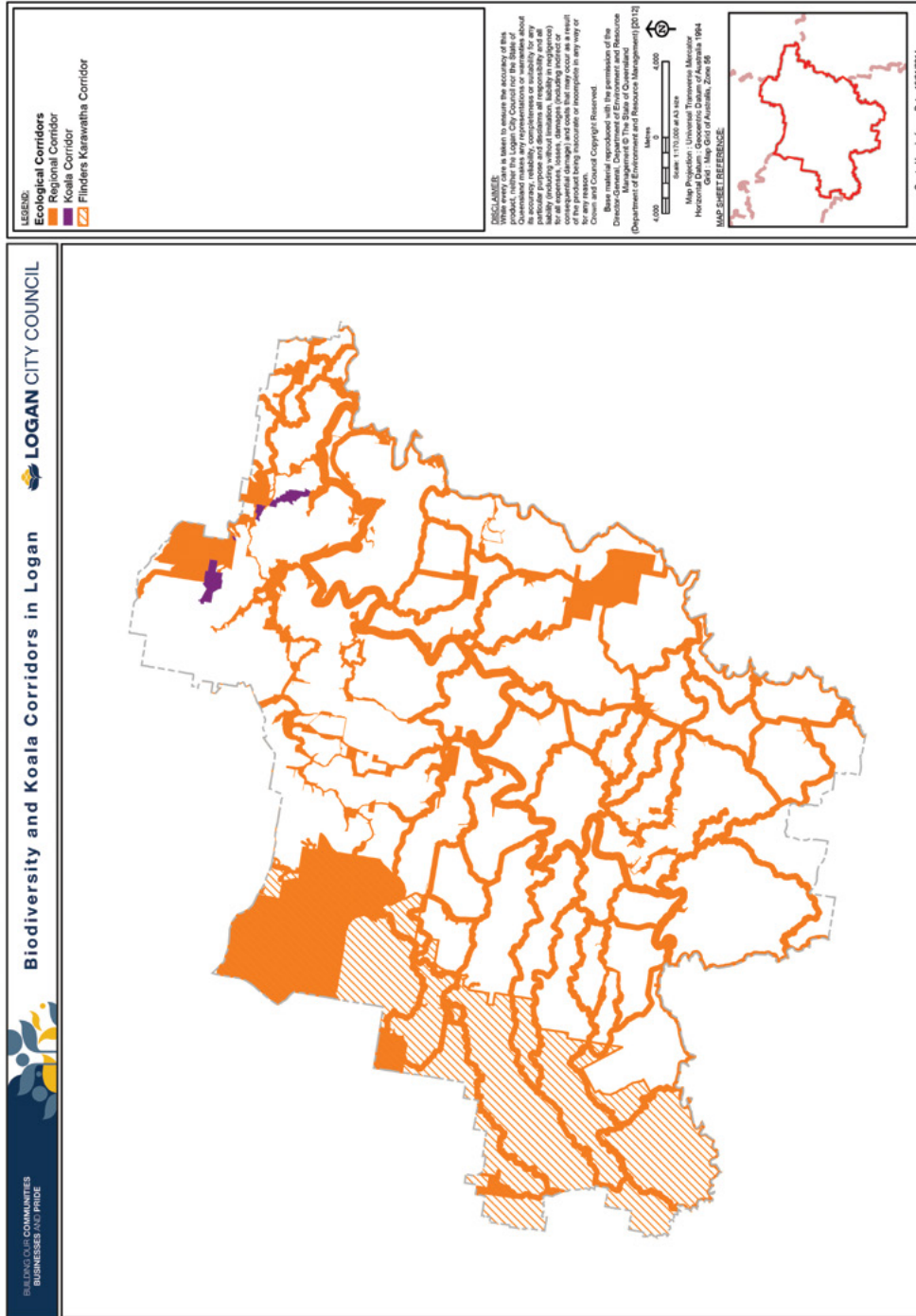
- Support the increase of koala habitat in the city through proactive programs and community conservation partnerships; and
- Promote and enhance regional solutions and collaboration.

The objective of achieving a net gain in koala habitat in the City of Logan also depends upon positive outcomes for the Urban Development Areas of Greater Flagstone and Yarrabilba. Economic Development Queensland will therefore play a significant role in determining whether the objective to achieve a net gain in koala habitat will be achieved in the City of Logan.

The Logan Planning Scheme will ensure protection of identified koala habitat and native vegetation, including areas currently not protected under current State regulations. Where unavoidable clearing is undertaken an environmental offset policy will ensure cleared vegetation is replaced by onsite re-vegetation, a strategic land contribution, or a financial contribution to deliver the offset outcomes.

The offset requirement is based on the ecological value (the Ecological Index) and area of the site cleared, as this is a more definitive value than the number of trees removed. The offset site must provide at a minimum an equivalent Ecological Index, which will always result in a larger area being offset compared to that which was cleared. A number of ecological values, including koala habitat, are used to calculate the Ecological Index of land across the city.

Figure 3: Strategic areas for koala habitat rehabilitation and revegetation



Created by Surf Date: 16/01/2014

This ensures that koala habitat is a primary consideration in land use planning, and development will be directed towards areas mapped as low ecological value.

A key aspect of the environmental offset policy is the targeted delivery of offsets in identified strategic corridor areas with alluvial soils thereby providing optimum koala habitat. The policy requires offsets (excluding onsite offsets) to be delivered either within strategically important locations such as environmental management and conservation areas, biodiversity corridors, koala corridors and/or bordering a conservation park. Koala habitat values are included in determining these corridors and areas, with the aim being to connect significant areas of fragmented vegetation, thereby increasing koala habitat connectivity in the City of Logan. Figure 3 identifies strategic areas for koala habitat rehabilitation and revegetation in the city identified as biodiversity and koala corridors in the city.



Revegetation required within the koala corridors must meet the standards of the South East Queensland Ecological Restoration Framework. Land that is acquired for offsets by Logan City Council will be placed into Council ownership and will be protected in perpetuity. The policy will also incorporate a continual improvement and adaptive management process to ensure a net gain in habitat is occurring.

Additionally, a range of proactive programs and community conservation partnerships will be delivered to protect, increase, and enhance habitat available to koalas.

Investment into on-ground habitat enhancement, koala science, local habitat research and community engagement will provide increased and enhanced koala habitat in the City of Logan.

Strategic Outcome 3: Improved koala safety and health

The City of Logan is expected to grow by more than 200,000 residents over the next 20 years and beyond. The City of Logan will continue to be one of the fastest growing areas in Queensland with dramatically increasing urban development and increasing pressure on the natural environment and koala habitat.

The City of Logan will continue to change as it responds to political, social, economic, environmental, technological and legislative shifts. The potential loss of koala habitat and increased human impacts are key challenges for the city.

To improve koala safety and health and minimise the threats and risks to koala Council will:

- Rebuild the linkage between koalas in the Koala Coast area with koalas to the south by enhancing the river corridors;
- Include wildlife friendly design, clearing obligations and innovative koala and wildlife friendly solutions in the development assessment process;

- Establish innovative solutions to mitigate identified koala movement barriers and improve opportunities for koalas to move easily and safely across the city;
- Reduce habitat fragmentation through an identified and protected functional koala habitat network through the city;
- Identify koala threat hot spots through an up-to-date sightings, injury and fatality recording framework;
- Provide and support weed and pest management to targeted koala habitat and corridors through direct delivery and/or conservation partnerships;
- Investigate and implement appropriate educational and regulatory tools to mitigate threats to koalas from domestic animals in priority wildlife conservation areas;
- Develop pro-active and reactive disaster management protocols for mitigating risks to koalas and other wildlife including bushfire management plans and flood recovery;
- Investigation of koala and wildlife friendly design and mitigation measures into community infrastructure and capital works projects; and
- Quantify and maximise the social and economic benefits of koalas to the city by providing an innovative, flexible and coordinated investment framework.



The expanding urban footprint and associated human impacts including direct loss of habitat, displaced/fragmented koala populations, increased risk of car strikes/dog attacks, increased stress (measured by cortisol levels) in koalas, exacerbated incidence of disease, reduced reproduction and increased movement barriers are key challenges for the koalas in the city.

Severe weather events and natural disasters (such as floods, drought and bushfire) can also cause injury or death and reduce the quality of koala habitat.

Improved koala safety and health can be achieved through a strategic, innovative and persistent approach to koala conservation where the identified risks and threats to koala are mitigated in partnership with the community, development industry and government agencies.

Strategic Outcome 4: Increased positive community engagement and awareness of koala conservation actions

To achieve the strategic outcomes of this Plan it is essential that it is supported by an active, engaged and supportive community including residents, land owners, businesses and the development industry.

One of the most important ways to improve the long term prospects for koalas is by increasing the knowledge of the general community and encourage community stewardship of koalas and take ownership of the environment to create positive changes in behaviour and attitude.



To achieve this strategic outcome Council will:

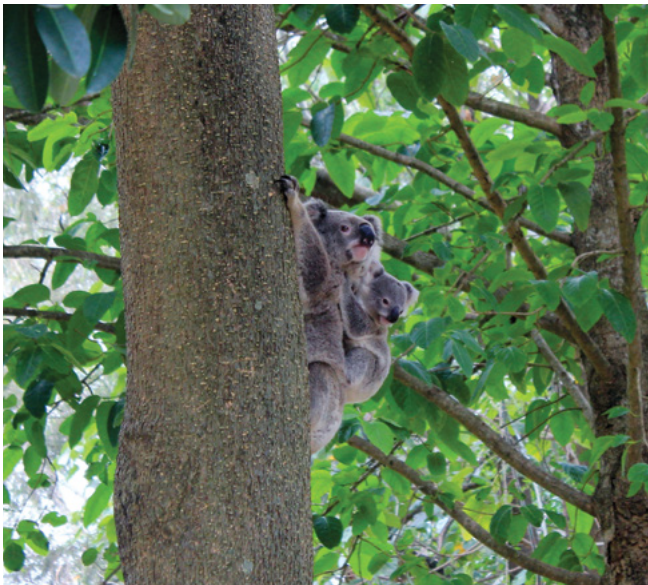
- Develop marketing materials to showcase the City of Logan as a proactive koala-friendly community;
- Deliver a range of proactive programs, events and workshops that promote and deliver increased habitat for koalas (such as koala tree planting days, koala capers workshops, Logan Eco Action Festival);
- Provide a range of tools, promotional material and signage that encourage positive changes in community knowledge, perception and behaviour towards koala conservation (such as koala friendly backyard design, wildlife friendly dog ownership, wildlife considerate driving habits);
- Partner with environmental groups, residents, land owners through community conservation partnerships and EnviroGrants to deliver increased habitat for koalas and/or raise awareness of koala conservation issues;
- Support appropriate ecotourism activities that increase awareness of the City of Logan's koalas and provide opportunities for research support and koala interaction; and
- Partner with local businesses and the development industry to identify innovative ways to become more koala-friendly and promote this to their customers.

The continued collaboration with key stakeholders and the community is an essential component of continuous improvement of the Plan.



INVESTING IN OUR KOALA, OUR ENVIRONMENT, OUR CITY

The City of Logan is well-placed to become an innovative leader in the long-term recovery of the koala especially in relation to the encroaching urban impacts on koala habitat. The City of Logan is centrally located, with a young and diverse population, and has a strong environmental mandate from the community. Council can also facilitate city-wide collaboration and investment while working to protect and enhance the City of Logan's koala population and habitat. Council is also situated in an enviable position to employ innovative pilot projects that can provide “proof-of-concept” to other Councils, thus attracting investment.



Current tourism revenue in the City of Logan is \$387.5 million, with a large proportion generated from tourists visiting family and friends. Existing tourism experiences focus on the outdoor recreation and leisure experience, as well as pursuing natural beauty such as walking, cycling, bird watching and nature spotting, fishing, canoeing and sports adventure.

It is essential to establish an investment framework that provides an innovative, flexible and coordinated process for maximising investment in koala conservation to support the Plan's vision.

The diversity of investment opportunities cover a broad range of themes which include:

- **Efficiency** – aligning goals and objectives of relevant Council policies, plans and strategies to incorporate koala conservation outcomes and benefits;
- **Partnerships with businesses particularly the development industry** – achievement of these goals relies on investment especially from the development industry through innovative and flexible policies such as the City of Logan’s environmental offset policy, investigating public-private partnerships, and exploring incentive-based schemes;
- **Collaboration and partnership** with research institutes, environmental and natural resource management groups, neighbouring Councils, community groups and government for grant funding and sponsorship opportunities;
- **Co-investment** – ensuring the social and economic benefits of the plan such as the tourism value of koala aligns with State and Federal priorities to leverage investment and attract grant opportunities;
- **Demonstration** – utilising key demonstration initiatives to promote on-ground and value-for-money ‘koala habitat revegetation’ actions and innovation; and
- **Stewardship** – empowering our community to take ownership of our environment and deliver on-ground action combined with best practice social procurement policies.



OUR PRIORITIES – KEY AREAS OF INTEREST

A strategic, sustainable and innovative approach to koala conservation is essential to ensure the long term viability of our koala population. Maximising the opportunities of direct and indirect social and economic benefit (eg tourism, associated recreational activities and investment opportunities) will substantially improve koala conservation, the City of Logan's economy, city image and overall quality of life.

The expanding urban footprint and associated human impacts are key challenges for the city. Achieving the strategic outcomes and vision of this Plan also depends upon positive outcomes for the Urban Development Areas of Greater Flagstone and Yarrabilba.

As a community, the City of Logan faces many future challenges and opportunities and needs to leverage off existing strengths, promote opportunities and create new possibilities to tackle issues including koala conservation and environmental enhancement. While managing growth will present challenges, by strategically planning for the future, it will also provide a range of opportunities for the city to continue to grow and prosper into a liveable and sustainable City of Choice.



OUR PLAN – ACHIEVING OUR VISION

The following tables outline the key foundational actions required to achieve the Plan’s key strategic outcomes.

Table 1: Key Actions under Strategic Outcome 1 of the Plan

Strategic Outcome 1 (SO 1) Improved understanding and accuracy of koala ecology and habitat in the City of Logan		
Actions	Performance Indicators	Priority
Maintain an up-to-date koala sightings database to guide investment in high use koala areas.	Increased and up-to-date sightings data available from the community.	Medium
Continue promotion and participation in annual community koala surveys.	Successful delivery of annual koala surveys with increased reported sightings.	Medium
Continually update koala habitat mapping to monitor habitat trends in the city.	Up-to-date and accurate koala habitat mapping.	High
Establish, maintain and enhance partnerships with universities and reputable koala conservation research groups.	Delivery and/or access to koala conservation collaborations, resources and research findings.	Medium
Support koala research projects to better inform future koala management. Research priorities include: <ul style="list-style-type: none"> • Determine relationship between habitat factors (such as soil type, soil moisture, leaf chemistry, tree species) and koala density; • Efficient long term monitoring of koala populations; • Impacts of temporal changes in habitat and climate on koala population data; • Baseline information on Logan’s koala genetic analyses, disease incidence, home ranges, population dynamics and reproductive status; and • Understanding of severe weather (ie. floods, drought), bushfire and invasive species on koala health. 	Provision and access to research outcomes provide useful and scientifically robust information.	Long-term
Implement koala survey methodologies that provide a more accurate map of koala population locations and densities in the City of Logan.	A more accurate City of Logan koala population information and map including field verification.	High
Develop and maintain a functional koala habitat network map for the city to reduce koala habitat fragmentation.	Up to date koala habitat network map. Reduced fragmentation of koala habitat.	High

Table 2: Key Actions under Strategic Outcome 2 of the Plan

Strategic Outcome 2 (SO 2) Increased quality protected koala habitat in the City of Logan		
Actions	Performance Indicators	Priority
Develop and maintain a functional koala habitat network map for the city that integrates with waterway and wetland corridors.	Clearly identified koala habitat network map. Reduced fragmentation of koala habitat.	High
Develop and implement biodiversity corridor code, overlay and maps in the planning scheme that identify and protect targeted koala habitat and corridors.	Protection of identified koala habitat and corridors.	High
Develop an investment prospectus that provides innovative, flexible opportunities for partnering in koala habitat rehabilitation, revegetation and strategic land acquisition.	Increased diversification of funding sources for koala habitat acquisition and enhancement activities.	High
Develop and implement innovative and flexible koala conservation solutions including: <ul style="list-style-type: none"> • an environmental offset framework and policy • voluntary offset opportunities. 	Increased koala habitat in the city delivered through alternative solutions.	High
Create a 'shovel ready' database of land suitable for environmental offset rehabilitation and revegetation works.	Publicly available data/mapping showing opportunities to increase koala habitat in the city.	High
Develop a prioritisation framework and plan for koala conservation rehabilitation and revegetation activities.	Targeted rehabilitation and revegetation activities in high priority areas.	High
Target revegetation to strategic koala habitat corridors including: <ul style="list-style-type: none"> • Logan and Albert River corridors • Munruben Wetlands/Jerry's Downfall Reserve to Birnam Range • Flinders-Greenbank to Karawatha Corridor. 	Increased vegetation cover and koala habitat in high priority areas.	Medium
Promote and enhance regional koala conservation solutions and collaboration.	Integrated regional koala corridor mapping and koala habitat delivered through collaborative measures.	Medium
Review and enhance current incentives for private land owners that contribute towards an increase in koala habitat including: <ul style="list-style-type: none"> • EnviroGrants Program • Voluntary Conservation Agreements • Voluntary Conservation Covenants • Land for Wildlife program. 	Increased koala habitat in the city delivered and protected through private land owners.	Medium-Low



Table 3: Key Actions under Strategic Outcome 3 of the Plan

Strategic Outcome 3 (SO 3) Improved koala safety and health		
Actions	Performance Indicators	Priority
Deliver a community education program that promotes koala safety and koala conservation promotional activities.	Increased community awareness of koala conservation issues.	High
Maintain a wildlife sightings, koala capture, injury and fatality database including car strike data from State government and community surveys to identify koala threat hot spots.	Accurate database developed and maintained with koala injury and fatality hot spots identified to influence targeted improvement actions.	High
Develop and implement innovative and best practice wildlife friendly design, koala friendly solutions and wildlife considerate clearing obligations in the development assessment process.	Reduced koala injury and fatalities resulting from development impacts.	High
Identify and deliver a range of community education programs regarding responsible dog ownership including delivery of wildlife friendly dog training workshops.	Reduced number of reported koala dog attacks.	High
Deliver and support proactive weed and pest management to targeted koala habitat and corridors through direct delivery and/or conservation partnerships.	Reduced koala injuries/fatalities resulting from pest animals.	High
Undertake periodic surveys to gauge community views and motivation factors regarding impacts of dog ownership and driving habits on koala conservation.	Positive changes in public attitude toward koala wellbeing.	Medium
Develop pro-active and reactive disaster management protocols for mitigating risks to koala and wildlife including flood recovery and bushfire management undertaken in accordance with the South East Queensland Fire & Biodiversity Consortium prescribed burn procedures.	Reduced koala injury and fatalities combined with faster injury recovery times for koala incidents resulting from natural disaster response and management.	Medium
Investigate appropriate regulatory tools or programs to mitigate threats to koala from domestic animals in priority wildlife conservation areas.	Reduced koala injuries/fatalities reported in priority wildlife conservation areas.	Medium
Investigation of koala and wildlife friendly design and mitigation measures into community infrastructure and capital works projects.	Increased koala and wildlife friendly design and mitigation measures incorporated into community infrastructure and capital works projects.	Medium-Low
Identify and investigate innovative solutions to mitigate major koala movement barriers across the city.	Reduced severity of key koala movement barriers in the city.	Medium-Low

Table 4: Key Actions under Strategic Outcome 4 of the Plan

Strategic Outcome 4 (SO 4) Increased positive community engagement and awareness of koala conservation actions		
Actions	Performance Indicators	Priority
Develop marketing material to showcase the City of Logan as a proactive koala-friendly community.	Increased awareness & knowledge of koalas in the City of Logan.	High
Develop innovative and interactive website information and tools promoting koala conservation in the City of Logan.	Increased hits and usage of koala conservation information and tools on the website.	High
Deliver a range of community programs to support community stewardship of koalas such as: <ul style="list-style-type: none"> • Environmental events, workshops and activities (Logan Eco-Action Festival, National Tree Day, Koala Capers workshop) • Voluntary Offset Planting • Free Trees Program • BushCare Program • Conservation Incentive Partnerships • EnviroGrants. 	Measured increased in participating properties/area of private land contributing to an increase in koala habitat.	High
Develop an investment prospectus that identifies opportunities for business, industry and community partnerships, co-investment sponsorship and voluntary environmental offsets contributions.	Increased diversification of funding sources for koala conservation activities.	High
Partner with environmental groups, residents, land owners through community conservation partnerships and EnviroGrants to deliver increased habitat for koalas and/or raise awareness of koala conservation issues.	Increase in koala conservation activities delivered through community partnerships.	Medium
Partner with local businesses and the development industry to identify innovative ways to become more koala-friendly and promote this to their customers and the community.	Increased numbers of participating businesses.	Medium
Investigate opportunities for community involvement in koala research projects.	Information available on research projects for groups and individuals to participate and number of community participants.	Medium
Undertake periodic surveys to determine community perceptions of koalas (particularly tourism or cultural importance) and current actions.	Positive changes in public attitudes towards koalas.	Medium
Develop and provision of a range of tools, promotional material and signage that encourage positive changes in community knowledge, perception and behaviour towards koala conservation such as: <ul style="list-style-type: none"> • koala friendly backyard design • wildlife friendly dog ownership • wildlife considerate driving signage. 	Increased awareness/ knowledge of koalas in the City of Logan and reduced koala injuries/fatalities from domestic animals and vehicle strikes.	Medium
Support appropriate ecotourism activities that increase awareness of the City of Logan's koalas and provide opportunities for research and koala interaction.	Increased numbers of ecotourism activities incorporating koala conservation philosophies.	Medium
Develop an investment prospectus/marketing material that quantifies and maximises the social and economic benefits of koala.	Improved public and community perception of the value of the City of Logan's koalas.	High

IMPLEMENTATION, REVIEW AND REPORTING

The Plan will be implemented through delivery of the functional actions identified to achieve the identified strategic outcomes. To successfully deliver on this Plan it is essential that it is supported by an active, engaged and supportive community including residents, land owners, businesses and the development industry.

Ongoing monitoring and review using the national Monitoring, Evaluating, Reporting and Improvement (MERI) framework will support the assessment of the Plan's performance in achieving the strategic outcome actions and ensuring the plan is adapted where improvements are required.

Documenting and evaluating the progress of the Plan will be communicated as part of Council's operational plan with the Plan reviewed and updated every five years.





**City of Logan Koala Conservation
Strategic Plan
2013–2023**

