

2025

World Environment Day Calendar Competition

Information Pack



Powerful Pollinators



**CITY OF
LOGAN**

Acknowledgement of Country

We acknowledge the Traditional Custodians of this Country and recognise their continued connection to land, water and community. We pay our respect to Elders past and present and extend that respect to all Aboriginal and Torres Strait Islander peoples in the City of Logan.



Each year, we celebrate World Environment Day on 5 June by holding a poster competition. The competition is open to all primary schools within the City of Logan for students to showcase their visions of our natural environment through art. We reflect on the opportunity this has given for young people to provide input and raise awareness on the environmental topics that matter to them.

This year, students are asked to create a poster fitting the theme of
Powerful Pollinators

Theme overview

Logan contains an amazing range of natural areas that are highly valued by our community and form an integral and important part of the identity, cultural history and fabric of our city. Our natural areas are home to a diversity of native plants and animals, some which are found nowhere else in the world.

Over 20,000 species of birds, bats, bees, butterflies, beetles and small mammals provide vital services for our ecosystems. From bushlands to paddocks and urban spaces, these powerful pollinators drive biodiversity. Most flowering plant species worldwide rely on animals for pollen transfer. As they travel from plant to plant, these pollinating animals carry pollen, fertilising plants and supporting their reproduction.

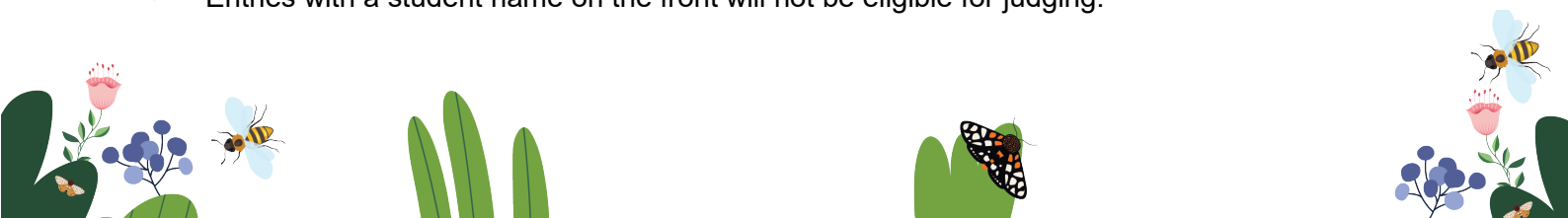
This year's theme invites students to explore the pollinator species that inhabit our city's environment and showcase the important role they play in maintaining our plant communities. The theme encourages students to connect with the world around them and observe how our powerful pollinators quietly shape the world around us.

Poster competition

The World Environment Day Poster Competition is open to all primary school students from Prep to Year 6 attending a school within the City of Logan. The competition provides a great opportunity for students to put their artistic creativity to the test by creating a colourful A4 or A3 poster.

Entry conditions

- Submitted artwork must align with the 2025 World Environment Day theme (see above).
- Students can only submit one individual entry. Group entries will not be eligible.
- Entries must be either be A4 or A3 size in landscape orientation.
- Entries can be done on paper or digital artwork formats (i.e. drawing, painting, mixed media, digital graphics), and can include text. Laminated posters, videos, three-dimensional sculptures or any similar formats will not be eligible for judging.
- Entries can be made from any traditional media, including pastel, oil pastels, pen, pencil, charcoal, acrylics, watercolour, oils, mixed media, collage, or any other sustainable/environmentally friendly materials.
- Entries must be the student's original creation. Making a copy of any pre-existing image is not eligible, whether visually or by tracing. Colouring in a printed outline, picture drawn by someone else or having someone else contribute to the artwork is also not eligible.
- Entries must include an attached Student Entry Form on the back of each poster with a short description of the artwork.
- Entries with a student name on the front will not be eligible for judging.



Key dates

- Entry submissions open: Friday 31 January 2025
- **Entry submissions close: Friday 28 March 2025**
- Winners will be announced at the Logan Eco Action Festival (LEAF) on Sunday 1 June 2025

Entry submissions

- Entries must be submitted through the student's school.
- Each school will need to collect and register all entries by year level. The five (5) best entries per year level will need to be selected and submitted to Council with the School Entry Form.
- Ensure each entry submitted to Council includes the Student Entry Form with the school, teacher's and the student's name, and year level clearly visible.
- Entries can be submitted by post, digitally or hand delivered.

Postal entries

- Please print the School Entry Form and include it with the entries when they are posted.
- Please appropriately package the entries in the envelope to ensure they are not damaged in the post. Entries must be mailed to:

Attention: Health, Climate and Conservation Branch
Logan City Council
PO Box 3226, Logan City DC QLD 4114

Hand delivered entries

- Please print the School Entry Form and include it with the entries when they are delivered.
- Please ensure that entries are put in an envelope with 'Attention: Health, Climate and Conservation Branch' on the front. Entries can be taken to:

Logan City Council Administration Centre
150 Wembley Road, Logan Central

Digital entries

- Entries should be in .JPG or .PNG formats with a minimum file size of 300dpi.
- Ensure each entry is saved with the school and students name, and year level as the file name. Example – Logan State School, Tina Arena, Year 1
- Entries will need to include the front and back of the poster with the Student Entry Form visible on the back.
- Please upload all school entries to a cloud-based storage service (e.g. Google Drive, Dropbox, Microsoft OneDrive, etc) and include the link in the email.
- Please ensure the email includes 'WED competition entries' in the subject, the School Entry Form, and the link to access the entries. Entries must be emailed to:
environment@logan.qld.gov.au
- Please note, you will be required to keep the original artwork and provide upon request.

Categories & prizes



Prizes for students

Prizes in the competition will be awarded in the following categories:

- Mayor's Choice Award
- Mayor's Choice Runner-up Award
- Eleven (11) Calendar Winner Awards
- Six (6) Highly Commended Awards

All finalists will feature in the City of Logan's 2026 World Environment Day calendar and receive a prize.

Every student who enters will receive a participation gift. Schools will need to provide the total number of entries for each year level to ensure we can give prizes to all participants.

Prizes for your school

All participating schools go into a random draw to win a major school prize.

Judging

Entries will be judged by a panel of Logan City Council staff after the submissions have closed. Posters will be judged against this year's theme and the judging criteria outlined in the Terms and Conditions.

Awards presentation

All finalists will be publicly announced at the 2025 Logan Eco Action Festival (LEAF) during the awards ceremony. Students will be presented with their certificate and prize by a representative of Council.

The major school prize winner will have a presentation at their school and will be attended by a representative of Council.

Display & publication of posters

All finalists will be publicly announced at the 2025 Logan Eco Action Festival (LEAF) and will have their posters on display at the event. The displays will then be featured at the Logan Art Gallery. Further details will be provided closer to the event.

All finalists will feature in the City of Logan's 2026 World Environment Day calendar. Calendars will be available free of charge from Council in late 2025.



Full Terms and Conditions can be viewed on the World Environment Day Competition page (www.logan.qld.gov.au/worldenvironmentday) or scan the QR code to the left.



Poster discussion & ideas

Looking to help students develop ideas for their poster entries? Here are questions that can help prompt class discussions or guide students when they are planning their artwork design.

What is your favourite pollinator?

Pollinators come in many different shapes, sizes, colours and abilities. Have students research the different types of pollinators and select their favourite species. Have a class discussion on why they selected the species as their favourite. Draw the species they select – it can include the species, their characteristics, habitats and behaviors.

Have you seen a pollinator out in nature?

We are lucky to live in a city full of an amazing range of natural areas. We have many different species of pollinators that live in these natural areas – bats, bees, birds, insects and other small mammals. Draw a pollinator species that you have seen out in nature, include their habitat and what they were doing when you saw them.

How do pollinators help our environment?

Logan is home to variety of pollinators that provide essential services in our environment. Research the different ways pollinators help our natural environment. Discuss as a class the interactions that pollinators have with plants. Draw the interactions they have with plants and showcase the benefits they create for biodiversity.

What are some of the important action's pollinators do to help people?

Pollinators are essential to people and planet. Research the ways that pollinators help in producing the food you eat. Have a class discussion on the process of paddock to plate, where pollinators fit into this process and some of the pollinator-dependent foods. Showcase this process by drawing how pollinators help to put food on our plates.

What are the special abilities that species have to undertake pollination?

Pollinators have adaptations, or unique characteristics (how they look) and behaviours (how they act) that help them undertake pollination. Research these special abilities (adaptations, characteristics and behaviours) and have a class discussion on how this influences the way species can pollinate our plants – this may also include how plants have adapted for our pollinators. Draw one of the special abilities and how they use it for pollination.

What can you do to help pollinators?

Pollinators face some tough challenges. Pesticides, habitat loss, and climate change are some of the hurdles in their path. Have a class discussion on ways you can help pollinators at school or home. Draw the ways you can help pollinators and help inspire our community.



Classroom activities

Here are topics and activities that can be brought into the classroom to explore and better understand this year's theme.

Learn about the different types of pollinators and their functions

Using print or digital resources, students can research the different types of pollinators that are found around the world and locally. Students can investigate the behaviours and functions of each species to understand why they play such an important role in pollination.

Engage a local pollinator expert

Engage a local expert to visit the school and provide students with the opportunity to learn more about a specific pollinator species. This could include organisations and businesses that focus on native bees, bats, birds, etc. They will be able to share perspectives and knowledge on the importance of these species in our ecosystems.

Create a pollinator garden at your school

Work with your class or school eco/environmental club to design and deliver a pollinator garden in the school. Research what food, shelter and water they need to survive, and what grants and programs are available to support delivery. Pollinator gardens can be simple and don't have to be done on a large scale.

Visit Logan's natural areas and explore local pollinator populations

As a class, or with their family, head outdoors and connect with nature. Whether it be a local bushland, a park, within the school grounds or in their backyard. Spend time observing nature, participate in nature mindfulness activity, and/or capture pollinators and their habitats through nature journaling. As a group, ask them to share what connections they made, what they observed and how it made them feel.

Watch a documentary or short film

Watch the documentary 'Wings of Life', 'The Private Life of Plants' or find a short film on YouTube from National Geographic, ABC or another science organisation. After watching, have a class discussion on what they have learnt about pollinators and why is it important to create pollinator-friendly spaces.



Curriculum connections

We have compiled a guide that draws connections across the Australian Curriculum to this year's theme. It aims to assist educators in aligning participation in this competition with student learning outcomes. This competition provides an additional tool to further develop knowledge of key learning areas and enhance the development of general capabilities.

The Australian Curriculum Mapping Guide can be downloaded from the World Environment Day Competition page on our website (www.logan.qld.gov.au/worldenvironmentday).

Further resources

City of Logan Natural Environment Strategy

www.logan.qld.gov.au/natural-environment-strategy

City of Logan's environment

www.logan.qld.gov.au/environment

Cool Australia

www.coolaustralia.org

Nature Play QLD

www.natureplayqld.org.au/resource-hub

Learn the Yugambah Language

www.yugambah.com/learn-the-language

Pollination - Australian Museum

<http://www.australian.museum/learn/animals/insects/pollination>

Australian Pollinator Week

www.australianpollinatorweek.org.au

The Why, What, When, Where, Who, How of Pollination – Smithsonian Garden

www.gardens.si.edu/gardens/pollinator-garden/why-what-when-where-who-how-pollination

Wild Pollinator Count

www.wildpollinatorcount.com

B&B Highway

www.ps.org.au/bb-highway

Nature Blocks

www.mynatureblock.org.au

Pollinator Link

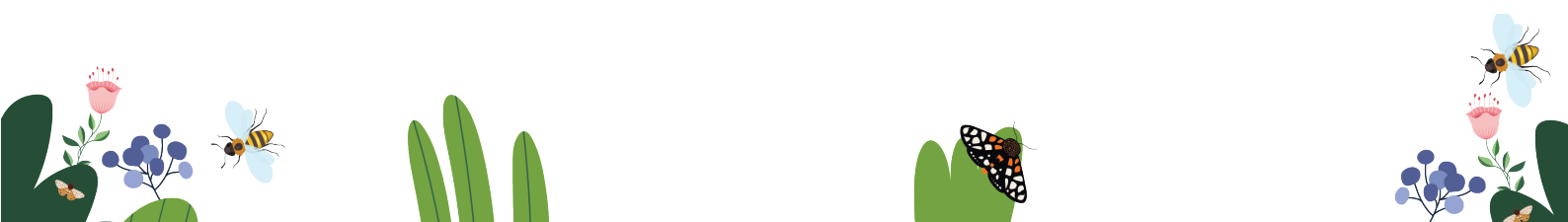
www.pollinatorlink.org

For more information

Phone: 3412 4491

Visit: logan.qld.gov.au/worldenvironmentday

Email: environment@logan.qld.gov.au



World Environment Day 2025 - Competition

School Entry Form

Please submit only the top five (5) entries from each year level.

School name:.....

Year level	Student names (top five (5) entries)	Total number of participating students	Contact teacher (name and email)
Prep	1.		
	2.		
	3.		
	4.		
	5.		
Year 1	1.		
	2.		
	3.		
	4.		
	5.		
Year 2	1.		
	2.		
	3.		
	4.		
	5.		
Year 3	1.		
	2.		
	3.		
	4.		
	5.		
Year 4	1.		
	2.		
	3.		
	4.		
	5.		
Year 5	1.		
	2.		
	3.		
	4.		
	5.		
Year 6	1.		
	2.		
	3.		
	4.		
	5.		



Total number of students who participated across the whole school:	
--	--

Postal entries

- Please print the School Entry Form and include it with the entries when they are posted.
- Please appropriately package the entries in the envelope to ensure they are not damaged in the post. Entries must be mailed to:

Attention: Health, Environment and Waste Branch
Logan City Council
PO Box 3226, Logan City DC QLD 4114

Hand delivered entries

- Please print the School Entry Form and include it with the entries when they are delivered.
- Please ensure that entries are put in an envelope with 'Attention: Health, Environment and Waste Branch' on the front. Entries can be taken to:

Logan City Council Administration Centre
150 Wembley Road, Logan Central

Digital entries

- Entries should be in .JPG or .PNG formats with a minimum file size of 300dpi.
- Ensure each entry is saved with the school and students name, and year level as the file name. Example – Logan State School, Tina Arena, Year 1
- Entries will need to include the front and back of the poster with the Student Entry Form visible on the back.
- Please upload all school entries to a cloud-based storage service (e.g. Google Drive, Dropbox, Microsoft OneDrive, etc) and include the link in the email.
- Please ensure the email includes 'WED competition entries' in the subject, the School Entry Form, and the link to access the entries. Entries must be emailed to: environment@logan.qld.gov.au
- Please note, you will be required to keep the original artwork and provide upon request.

All participants receive a prize (even if the entry is not in the top 5), therefore, please supply Council with the total number of students from each year level who submitted an entry in the competition.

By submitting this form, you agree to the Terms and Conditions. Please refer to the Terms and Conditions on the World Environment Day Competition page on our website (www.logan.qld.gov.au/worldenvironmentday) for further information and guidelines.

More School and Student Entry Forms can be found on the World Environment Day Competition page on our website (www.logan.qld.gov.au/worldenvironmentday).



World Environment Day 2025 - Competition Student Entry Form

Please produce a landscape orientation poster either A4 or A3 in size which illustrates the theme '**Powerful Pollinators**'. Please fill in and attach this entry form to the back of the poster.

Closing date: Friday 28 March 2025 (entry forms must be legible to be considered).

Student's name:	Year level:
Teacher's name:	I confirm I have read the entry conditions, and this poster is eligible. <input type="checkbox"/>
School:	
What is your poster about?	

World Environment Day 2025 - Competition Student Entry Form

Please produce a landscape orientation poster either A4 or A3 in size which illustrates the theme '**Powerful Pollinators**'. Please fill in and attach this entry form to the back of the poster.

Closing date: Friday 28 March 2025 (entry forms must be legible to be considered).

Student's name:	Year level:
Teacher's name:	I confirm I have read the entry conditions, and this poster is eligible. <input type="checkbox"/>
School:	
What is your poster about?	

World Environment Day 2025 - Competition Student Entry Form

Please produce a landscape orientation poster either A4 or A3 in size which illustrates the theme '**Powerful Pollinators**'. Please fill in and attach this entry form to the back of the poster.

Closing date: Friday 28 March 2025 (entry forms must be legible to be considered).

Student's name:	Year level:
Teacher's name:	I confirm I have read the entry conditions, and this poster is eligible. <input type="checkbox"/>
School:	
What is your poster about?	

