

# Eagleby Master Drainage Upgrade

## Works notice

Dear resident,

BMD on behalf of Logan City Council wishes to advise upcoming temporary partial road closures in your area.



<b>Where</b>	Logan Street (west) and Willowie Crescent ( <b>see map overleaf</b> ).
<b>When</b>	1 to 10 July 2024, 7 am to 6 pm
<b>Please note</b>	Works may be temporarily delayed due to weather or site conditions at any time.

### What is happening?

BMD is completing sealing and asphalt works on the above-mentioned streets.

This one of the multiple work zones required for the Eagleby Master Drainage upgrade. Closures will vary as works progress.

### What can I expect?

Some of the temporary changes include:

- traffic delays
- reduced speed limits
- driveway access restrictions
- at times – odours, noise, dust and vibration.

We aim to minimise disruptions and appreciate your patience and cooperation to help us complete the works efficiently.

You will have local access to your property most of the time, even if signed as 'road closed'. If you need access, please speak

with the traffic controllers. They may escort you through the work zone or ask you to wait for a short time until it is safe to drive.

### Be prepared

- Do not park vehicles on the road near the closure area.
- For safety, follow instructions and signage.
- Avoid entering the work zone.

### More information

Scan the QR code to find out more about the Eagleby Master Drainage Project and to see other work locations and dates.

### Contact us

For questions about work mentioned on this notice, please contact:

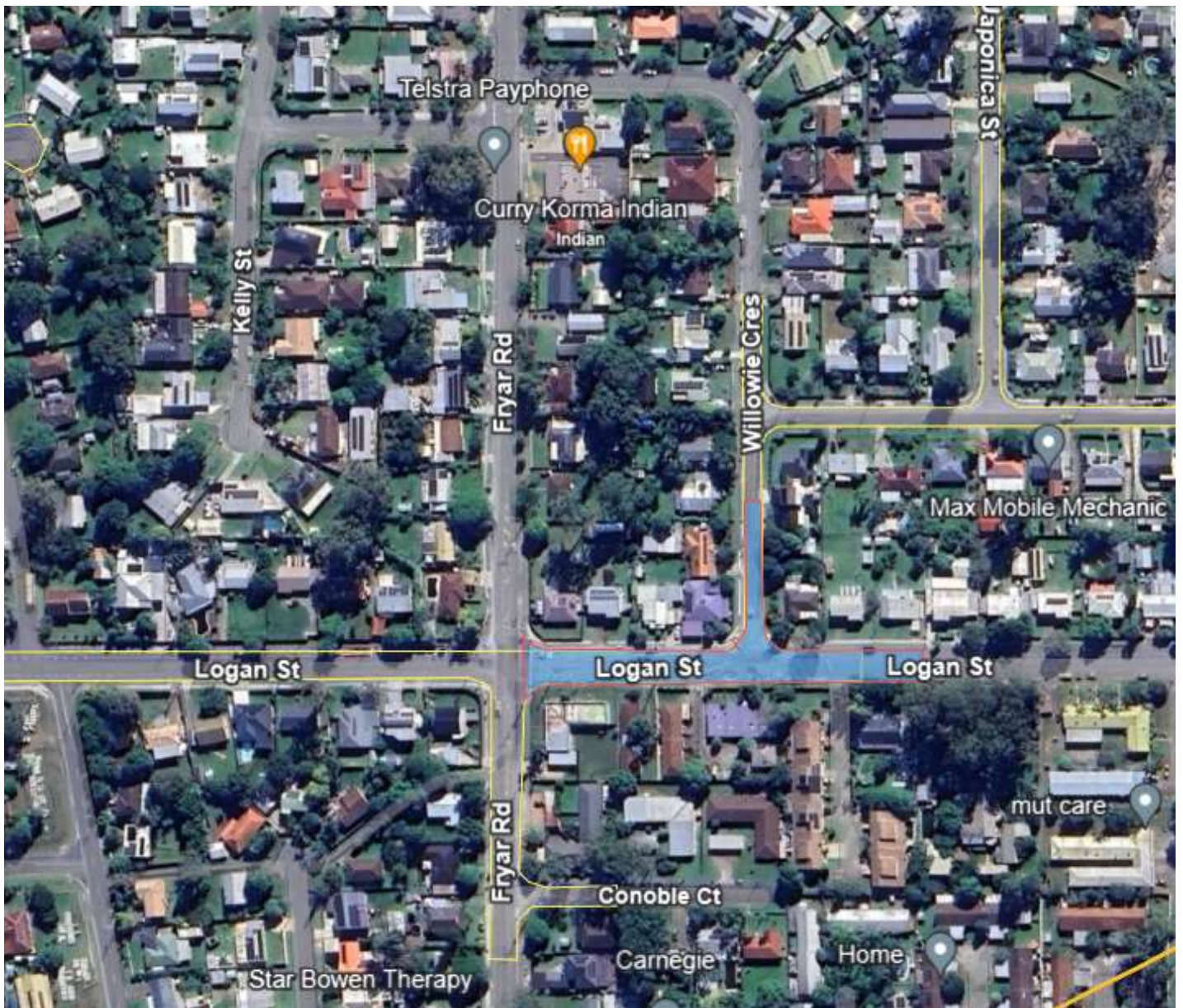
- ☎ Shane Smith 0408 786 744
- ✉ shane.smith@bmd.com.au



[logan.qld.gov.au](http://logan.qld.gov.au)



# Work zone map



**Closures will vary as works progress. Crews are on site at multiple locations. Please scan the QR code to see other work locations and dates.**

We're here to help, and remember:

- allow extra time
- follow signage
- ask questions
- contact us ahead of time if special access is required.



[logan.qld.gov.au](http://logan.qld.gov.au)