



Slacks Creek Implementation Plan

POLICIES, PROGRAMS AND PROJECTS



CITY OF
LOGAN

SLACKS CREEK



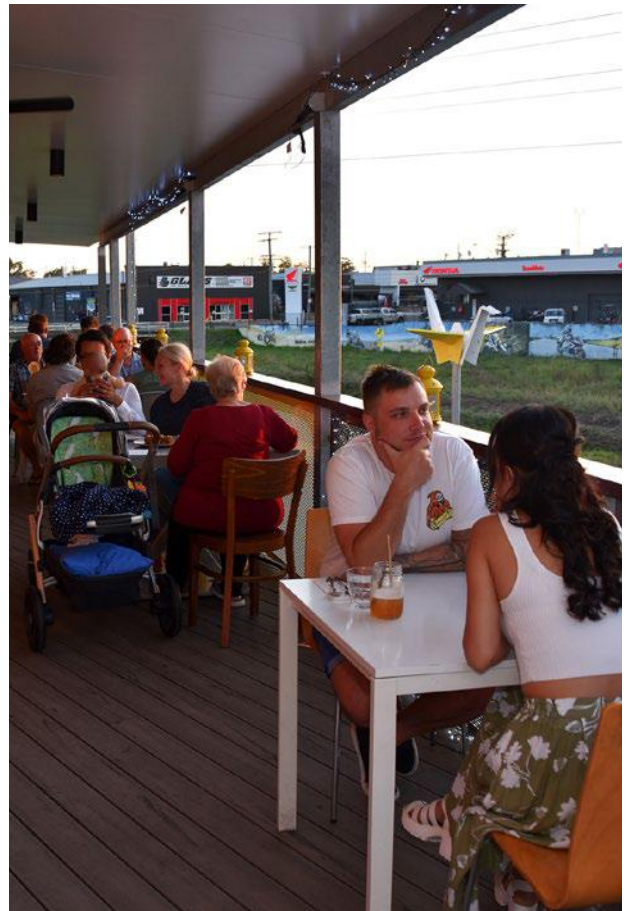
List of Abbreviations

Logan City Council Branches

AV	Advocacy Program – Office of the CEO
CC	Corporate Communications Branch
CS&I	Customer Service and Information Branch
CS&L	Community Safety and Liveability Branch
DA	Development Assessment Branch
ED&CP	Economic Development and City Planning Branch
ELT	Council’s Executive Leadership Team
HEW	Health, Environment and Waste Branch
LCI	Libraries and Creative Industries Branch
Parks	Parks Branch
RCM	Roads Construction Maintenance Branch
RID	Road Infrastructure Delivery Branch
RIP	Road Infrastructure Planning Branch
SCI	Sports and Community Infrastructure Branch
VE	Venues and Events Branch
LW	Logan Water

Other stakeholders

DESBT	Department of Employments, Small Business and Training
DTMR	Department of Transport and Main Roads
PCYC	Police Citizens Youth Club
QPS	Queensland Police Service



Acknowledgement of Country

Logan City Council acknowledges the Traditional Custodians of the land, water, and country we now call the City of Logan. We pay our respect to Elders past, present and emerging and extend that respect to all Aboriginal and Torres Strait Islander peoples across the city.

CONTENTS

Introduction	4
Slacks Creek priority projects completed	8
Slacks Creek priority projects funded	10
Priority Policies, Programs and Projects	11
01 People focused	14
02 Responsive	16
03 Connected	18
04 Resilient	21
05 Distinctive	22
06 Embracing nature	24

Introduction

The purpose of the Slacks Creek Implementation Plan is to progress the Slacks Creek-relevant aims and objectives of the Greater Springwood Local Plan from ‘visioning’ to ‘doing’ through the process as set out in Figure 1.

The Implementation Plan identifies a number of place-based actions that are Categorised as either a policy, program or project. Each place-based action ultimately contributes to the delivery vision for Slacks Creek. Depending on the type of place-based action, it may be delivered by Council, the Queensland Government, the Federal Government, the private sector or the community. The process of identification and prioritisation of place-based actions is the result of ongoing engagement with stakeholders, ensuring the place-based actions represent the current and future needs of the community, government, industry, business and landowners.

These aspirational place-based actions will assist planning and coordination across Council to deliver the actions required to progress the vision of the current Greater Springwood Local Plans and future Slacks Creek Local Plan (master plan).

This approach allows Council to commit to a framework to deliver the vision of the master plan over the short term (up to five years), medium term (five to ten years) and long term (more than ten years), whilst allowing a more flexible approach in the delivery of priority projects, policies and programs.

The place-based actions have been identified by applying Logan’s Urban Design Framework (Figure 2), that considers the alignment of key places with the shared vision for the activity centre master plans. The vision of the UDF is “High quality Urban Design in Logan will drive positive place-based outcomes and is a foundation for all future investment decisions” and therefore provides the appropriate lens to consider the key actions/tasks for the Implementation Plan. When the six (6) principles are holistically considered they provide the foundation to create a high-quality built environment that matches the aspirations of its residents.

The place-based actions recommended for implementation are set out in more detail in this document.



The Place Making and Urban Design Program (Economic Development and City Planning Branch) will lead the collaboration across Council, community, and business stakeholders to deliver key actions for the centre. Where identified, the internal branch/es recommended to ideally lead the project are identified. The place-based actions are expected to be updated regularly and do not represent a commitment by Council or other stakeholders for funding or delivery. The place-based actions can be considered for funding, applications for government grants and partnerships with a range of stakeholders that lead to the eventual delivery of the project. The Division 3 Councillor will be consulted on all place-based actions as this work continues.



Figure 1 – ‘Visioning’ to ‘Doing’

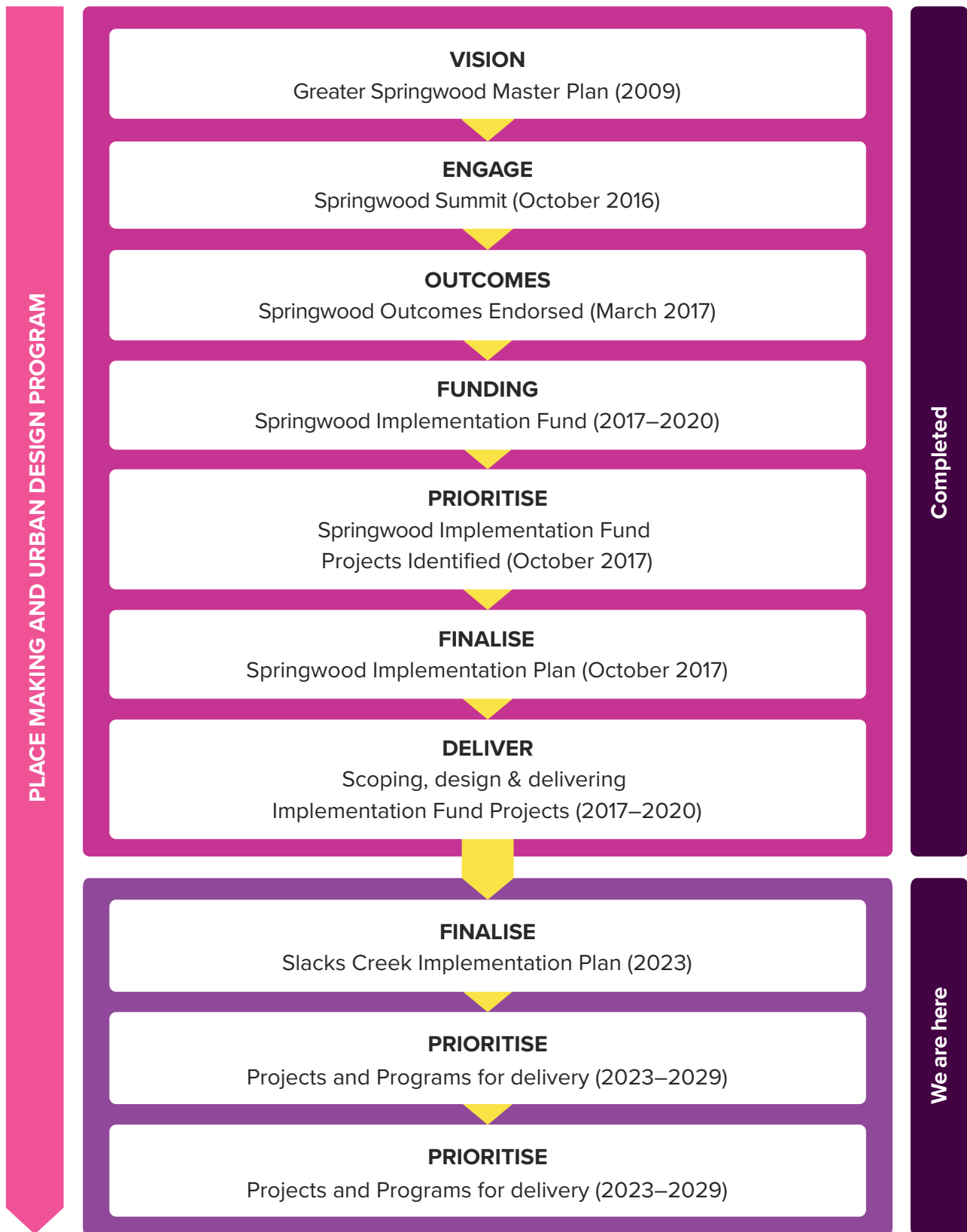
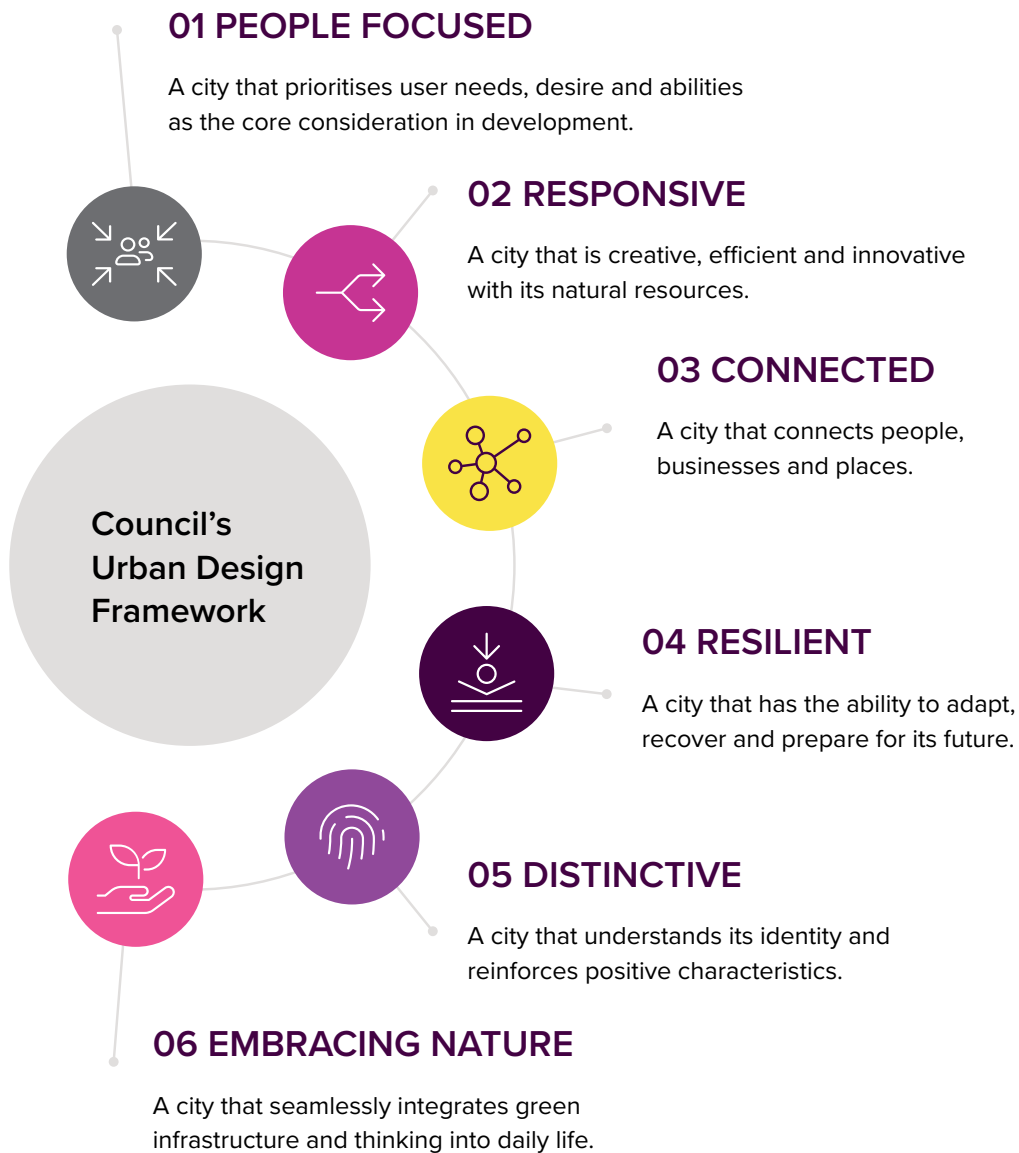


Figure 2 – Logan’s Urban Design Principles



Slacks Creek priority projects completed

Slacks Creek Green Link – Stage 1 (Baker Street to Moss Street)

The project was completed in May 2020 and now connects Compton Road with Moss Street by the creation of a new 780 m long and 3 m wide shared pathway.

The pathway meanders through parkland with a new bridge to connect both sides of the creek and includes improved landscaping in the Slacks Creek catchment, shade structures, bins and lighting, CCTVs, lighting, and integration of cycling infrastructure with open space and public art.

This project forms part of the offroad shared pathway connection from Slacks Creek to Meadowbrook (and beyond).

The \$3.2 million project was funded by Council and funded by DTMR under the Cycle Network Local Government Grant.





Slacks Creek priority projects funded

Slacks Creek Green Link Design – Stage 2 (Moss Street to Park Road)

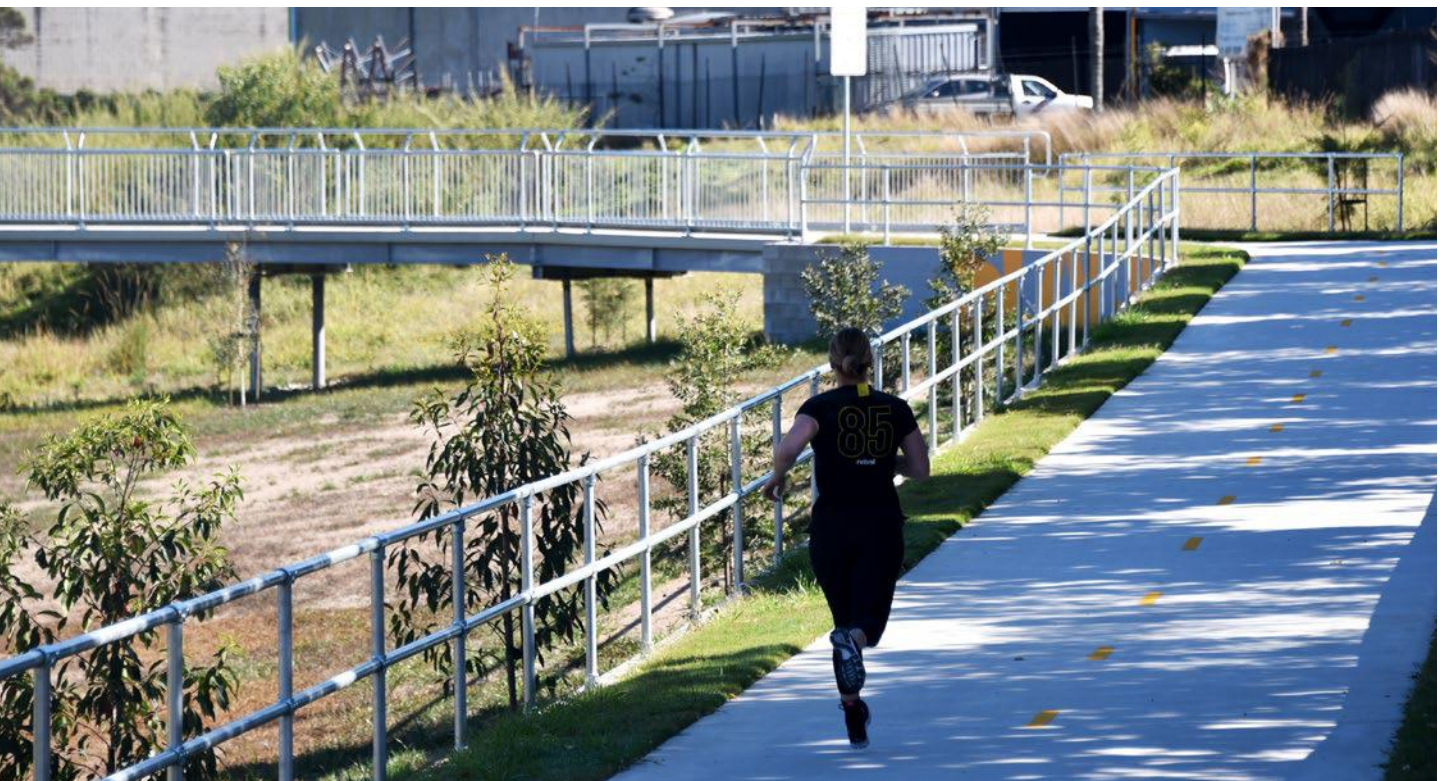
Following the 2016 Springwood Summit, the Slacks Creek Green Link was identified as one of the key outcomes from the Summit and was included in the Springwood Implementation Plan as one of the priority projects for the Area.

In 2020 the Slacks Creek Green Link Stage 1 – Baker Street to Park Road was delivered by Logan City Council with part grant funding from DTMR Cycle Network Local Government Grant (CNLGG). In 2021, TMR awarded Logan City Council with the CNLGG for part funding of the design of Slacks Creek Green Link Stage 2 – Moss Street to Park Road.

Similar to Stage 1, the Stage 2 Green Link will consist of an approximately 650 m long and 3 m wide concrete pathway. This pathway will include wayfinding signs, bridge crossing, feature landscape, shade structure, bins and lighting, CCTVs, lighting, and integration of cycling infrastructure with open space and public art.

This project will form part of the “missing link” from the offroad shared pathway connection from Slacks Creek to Meadowbrook (and beyond).

The detailed design and feasibility of the project will be completed in early 2023. Once the design is complete, Council will then seek funding for the construction of this project.



Priority Projects, Policies and Programs

	Place-based Actions	Timing	Summit Outcome	Type
PEOPLE FOCUSED	1 Master plan sports and community spaces for Cronulla Park and Lowe Oval	Complete		Project
	2 Invest in the delivery of sport and community spaces for Cronulla Park	Medium term		Project
	3 Invest in the delivery of sport and community spaces for Lowe Oval	Short term	✓	Project
	4 Upgrade and expansion of the safety camera network	Medium term	✓	Project
RESPONSIVE	5 Traffic modelling to identify intersection upgrades within the activity centre	Medium term		Project
	6 Update Slacks Creek Local Plan for the Logan Planning Scheme 2025	Short term	✓	Policy
	7 Develop an economic, environmental and social scorecard	Medium term		Program
CONNECTED	8 Slacks Creek Green Link (Baker Street to Moss Street)	Complete	✓	Project
	9 Slacks Creek Green Link (Moss Street to Watland Street) – Design	Short term	✓	Project
	10 Slacks Creek Green Link (Moss Street to Watland Street) – Construction	Short term	✓	Project
	11 Widening of the M1 Motorway	Medium term	✓	Project
	12 Green bridge link over the M1 Motorway	Long term	✓	Project
	13 Enhanced public transport network connection between Springwood (bus station) and Logan Central (train station)	Medium term		Project
	14 Enhanced cycle network linking the Springwood and Logan Central centres	Medium term		Project
	15 Enhanced Pedestrian/Cycle Connection between Lexington Road, Springwood Bus Station and Fitzgerald Avenue	Short term		Project
	16 Watland Street M1 Motorway overpass connection to the Slacks Creek corridor up to Moss Street	Short term	✓	Project
	17 Logan Road to Slacks Creek pedestrian connection improvement	Medium term		Project
	18 Eleanor Park shared path connection	Medium term		Project

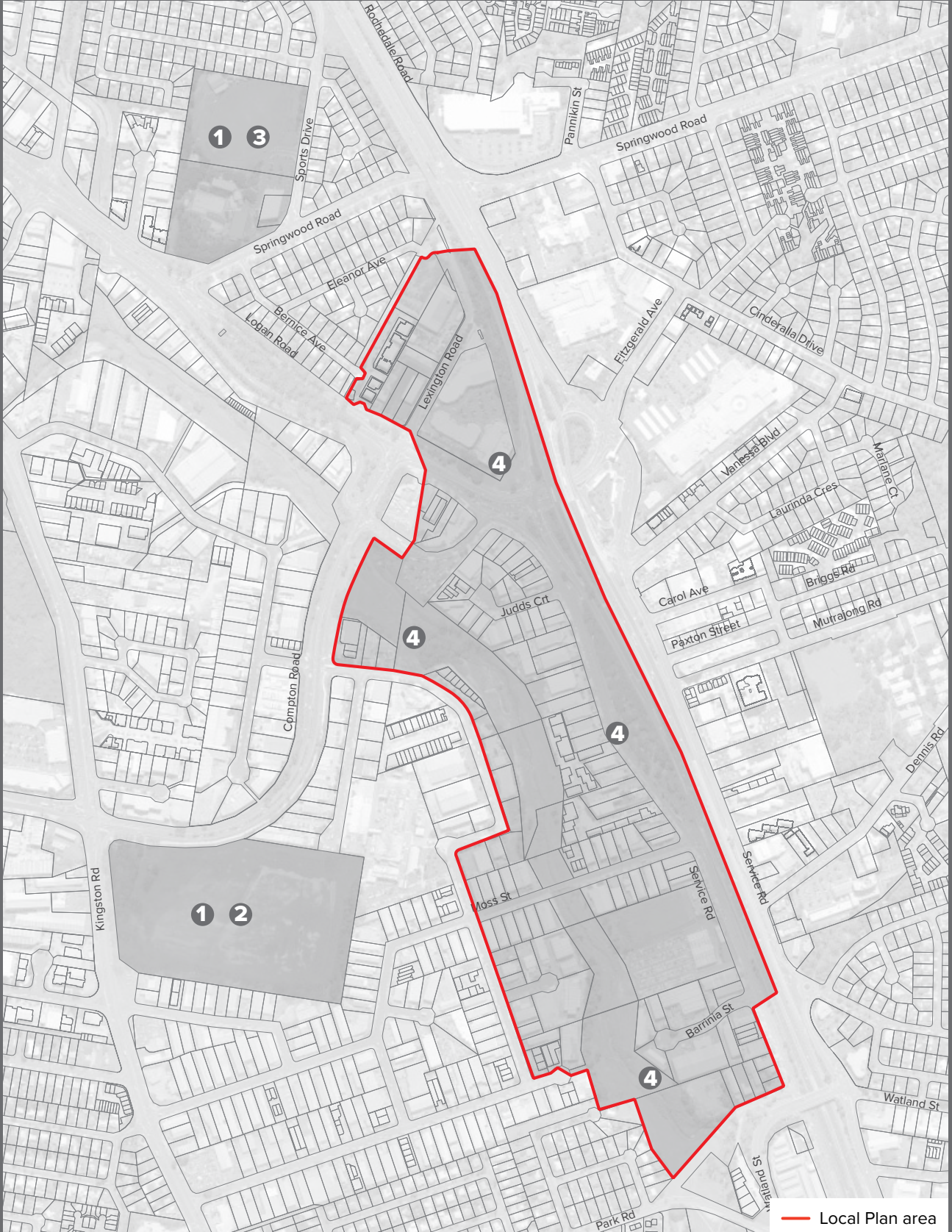
	Place-based Actions	Timing	Summit Outcome	Type
RESILIENT	19 Seek opportunities to utilise the Pacific Motorway (M1) upgrade project for more green space, shade and walkability/ active transport	Long term	✓	Project
	20 Slacks Creek corridor precinct activation strategy	Short term	✓	Project
DISTINCTIVE	21 Facilitate catalyst gateway/landmark buildings	Medium term		Program
	22 Slacks Creek Place Branding Strategy	Complete	✓	Policy
	23 Implementation of place branding and marketing plan for attracting businesses, investors and residents to Slacks Creek	Short term		Policy
	24 Create landscape threshold spaces/entry statements at major road and open space intersections	Long term	✓	Project
	25 Creative mapping projection with creative art	Short term	✓	Project
EMBRACING NATURE	26 Moss Street streetscape enhancement	Medium term	✓	Project
	27 Compton Road streetscape enhancement up to Cronulla Park	Short term	✓	Project
	28 Logan Road streetscape enhancement	Medium term	✓	Project
	29 Springwood Road streetscape enhancement up to Lowe Oval	Medium term		Project
	30 Pacific Motorway Service Road Green Link	Medium term		Project







01 People focused



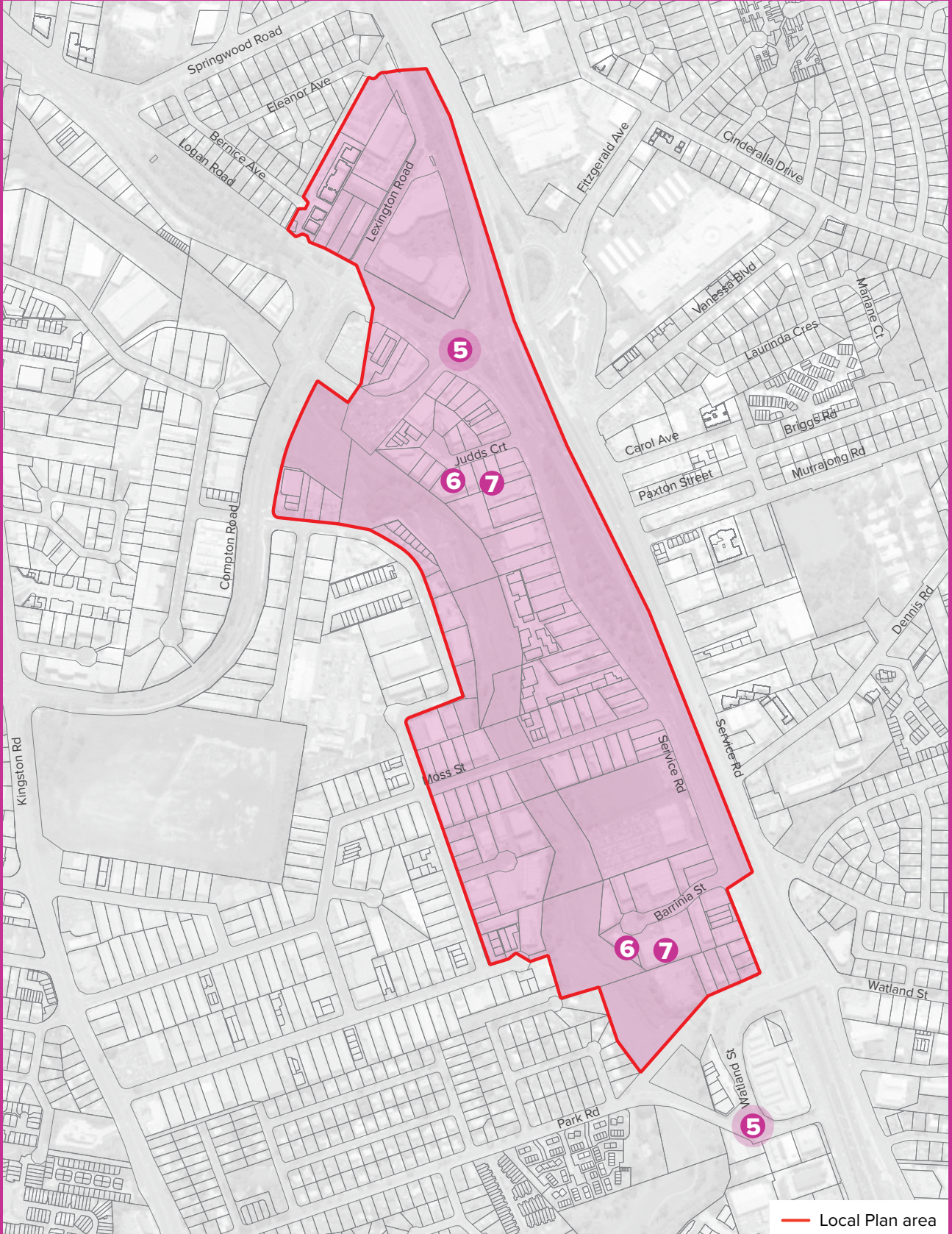
Note: Some number locations are general only and not intended to indicate specific areas.

01 PEOPLE FOCUSED				
Actions		Timing	Type	Stakeholders
1	<p>Master plan sports and community spaces for Cronulla Park</p> <p>Prepare a precinct level master plan to identify future sport and community facilities or other land uses that can be established on Cronulla Park and Lowe Oval. The precinct plan has been completed.</p>	Complete	Project	<p>Lead: SCI</p> <p>Support: ED&CP, Parks, AV</p>
2	<p>Invest in the delivery of sport and community spaces for Cronulla Park</p> <p>Based on the recommendations of the Cronulla Park Master Plan undertake feasibility studies and advocate for the delivery of sport and community spaces in Cronulla Park.</p>	Medium term	Project	<p>Lead: SCI</p> <p>Support: LCI, Parks, RIP, ED&CP, local residents, community</p>
3 ✓	<p>Invest in the delivery of sport and community spaces for Lowe Oval</p> <p>Based on the recommendations of the Lowe Oval Master Plan undertake feasibility studies and advocate for the delivery of sport and Community spaces in Lowe Oval.</p>	Medium term	Project	<p>Lead: SCI</p> <p>Support: LCI, Parks, RIP, ED&CP, local residents, community</p>
4 ✓	<p>Upgrade and expansion of the safety camera network</p> <p>Upgrade and expand safety camera network inclusive of providing CCTV at key locations along the pedestrian and cycle network, focussing on pedestrian underpasses, the bus station, civic spaces and local shopping centres.</p>	Short term	Project	<p>Lead: ED&CP</p> <p>Support: SCI, AV</p>

✓ Summit Outcome



02 Responsive



Note: Some number locations are general only and not intended to indicate specific areas.

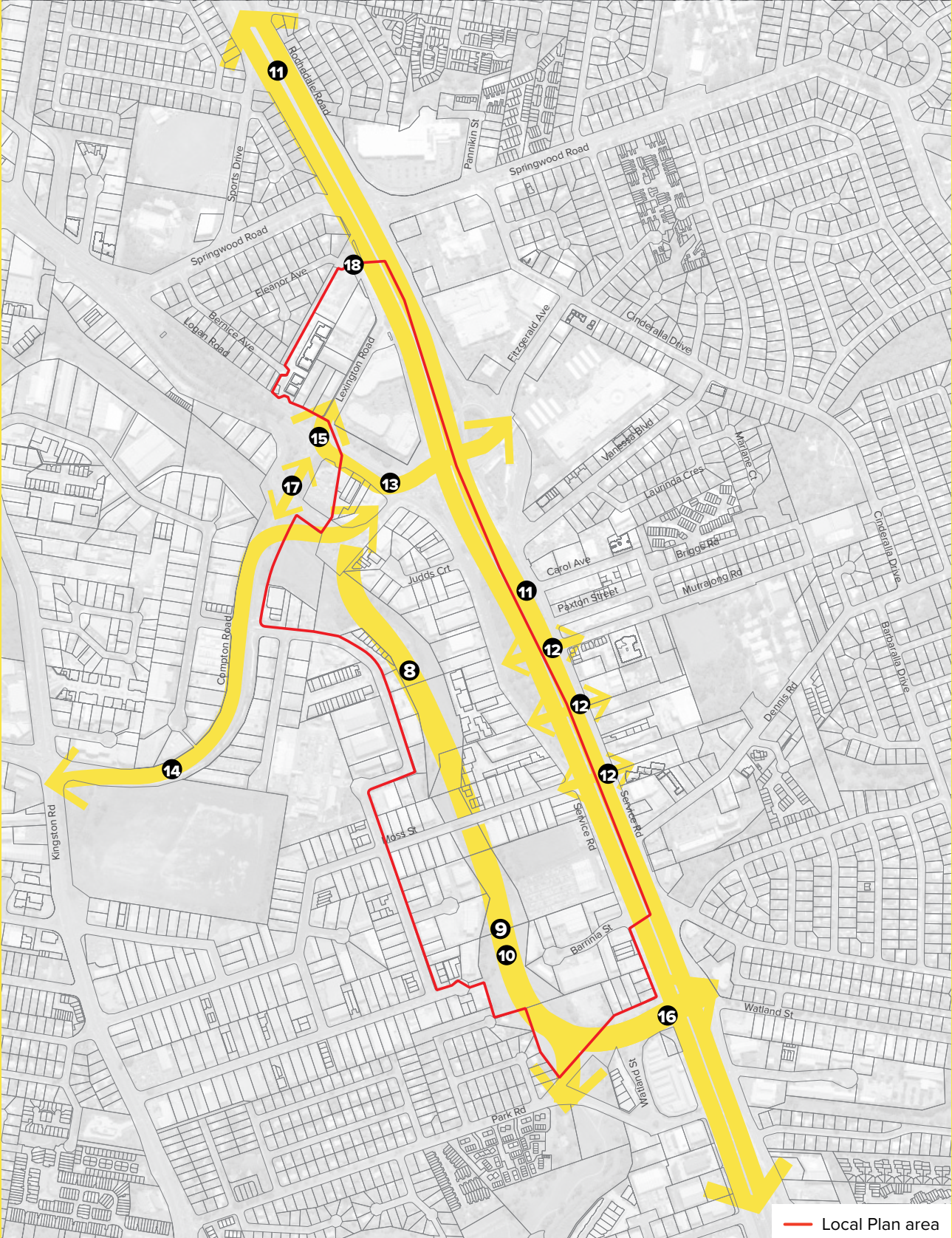
02 RESPONSIVE

Actions	Timing	Type	Stakeholders
<p>5 Undertake traffic modelling to identify intersection upgrades within the activity centre Identify major intersections with traffic modelling and intersection upgrade if required.</p>	Medium term	Project	<p>Lead: RIP Support: ED&CP</p>
<p>6 Develop a detailed precinct plan to inform the Planning scheme Investigate the Slacks Creek area that formed part of the Springwood Local Plan to inform future land use planning, place making opportunities and connections with the Springwood centre.</p>	Short term	Policy	Support: CC, CSI, RIP, DA
<p>7 Develop an economic, environmental, and social scorecard Establish diverse qualitative and quantitative measures that provide government, businesses and the community with an indication of the overall environmental, social and economic benefits of the key catalyst projects.</p>	Medium term	Program	<p>Lead: ED&CP Support: CSI, HEW, SCI, CC, Community Stakeholders</p>





03 Connected



Note: Some number locations are general only and not intended to indicate specific areas.

03 CONNECTED

Actions	Timing	Type	Stakeholders
<p>8 ✓ Slacks Creek Green Link (Baker Street to Moss Street) Inclusive of rejuvenating the Slacks Creek catchment, improved integration of cycling infrastructure with open space and integration with a 3m wide pathway, landscaping, shaded structures and furniture, public art, CCTV and bridge crossing.</p>	Complete	Project	<p>Lead: ED&CP Support: Parks, HEW, RIP, RID, LW, AV, LCI, Local Business</p>
<p>9 ✓ Slacks Creek Green Link (Moss Street to Watland Street) – Design Inclusive of rejuvenating the Slacks Creek catchment, improved integration of cycling infrastructure with open space and integration with a 3m wide pathway, landscaping, shaded structures and furniture, public art, CCTV and bridge crossing.</p>	Short term	Project	<p>Lead: ED&CP Support: Parks, HEW, RIP, RID, LW, AV, LCI, Local Business</p>
<p>10 ✓ Slacks Creek Green Link (Moss Street to Watland Street) – Construction Construction of rejuvenating the Slacks Creek catchment, improved integration of cycling infrastructure with open space and integration with a 3m wide pathway, landscaping, shaded structures and furniture, public art and CCTV.</p>	Short term	Project	<p>Lead: ED&CP Support: Parks, HEW, RIP, RID, LW, AV, LCI, Local Business</p>
<p>11 ✓ Widening of the M1 Motorway Advocate for the widening of the M1 Motorway to improve accessibility to the activity centre.</p>	Medium term	Project	<p>Lead: ED&CP Support: RIP, AV, DTMR, Federal/State Government</p>
<p>12 ✓ Green bridge link over the M1 Motorway Deliver a connection across the M1 inclusive of the creation of a light weight bridge structure to provide a connection across the highway.</p>	Long term	Project	<p>Lead: ED&CP Support: RIP, AV, Federal/State Government, DTMR</p>
<p>13 Enhanced public transport network connection between Springwood (bus station) and Logan Central (train station) Advocate for the implementation of an improved public transport connection between the Springwood Activity Centre (the existing bus station and future busway extension) and the train station at Logan Central.</p>	Medium term	Project	<p>Lead: ED&CP Support: RIP, AV, DTMR/Translink</p>

✓ Summit Outcome

03 CONNECTED

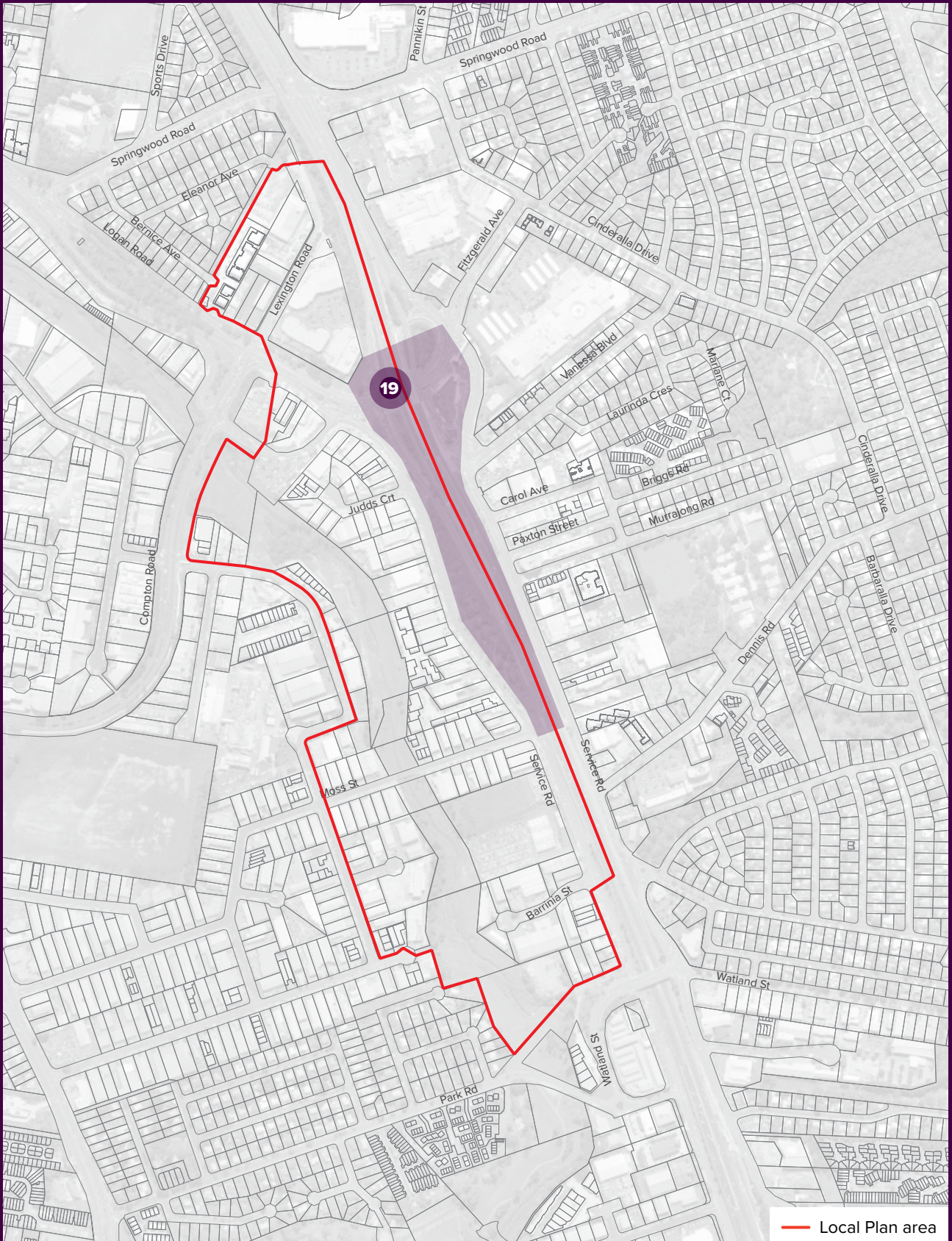
Actions	Timing	Type	Stakeholders
14 Enhanced cycle network linking the Springwood and Logan Central centres Deliver improved cycle connections along Compton Road to link the two activity centres.	Medium term	Project	Lead: ED&CP Support: RIP, DTMR
15 Enhanced Pedestrian/Cycle Connection between Lexington Road, Springwood Bus Station and Fitzgerald Avenue Inclusive of LED lighting, CCTV, public art and hard and soft scape upgrades, shared off road facilities, and integration of public art opportunities.	Short term	Project	Lead: ED&CP Support: SCI, RIP, Parks, AV, DTMR, Translink
16 ✓ Watland Street M1 Motorway overpass connection to the Slacks Creek corridor up to Moss Street Improved integration of active transport infrastructure from Slacks Creek corridor to eastern Springwood via Watland Street crossing. Improvement in existing hard and soft scape upgrades, shared off road facilities, wayfinding signage and integration of public art opportunities.	Short term	Project	Lead: ED&CP Support: Parks, RIP, SCI, LCI, AV, HEW, Community and Business Groups, Local Developers, DTMR
17 Logan Road to Slacks Creek pedestrian connection improvement Improved pedestrian connection between Logan Road and Lexington Intersection with Slacks Creek Green Link with 3 m wide foot path and safe pedestrian crossing at Bakers Street and Compton Road intersection.	Medium term	Project	Lead: ED&CP Support: Parks, RIP, SCI, LCI, AV, HEW, Community and Business Groups, Local Developers, DTMR
18 Logan Road to Slacks Creek pedestrian connection improvement Improved pedestrian connection between Logan Road and Lexington Intersection with Slacks Creek Green Link with 3 m wide foot path and safe pedestrian crossing	Medium term	Project	Lead: ED&CP Support: RIP, Parks, Community and Business Groups, Local Developers

✓ Summit Outcome





04 Resilient



Note: Some number locations are general only and not intended to indicate specific areas.

04 RESILIENT

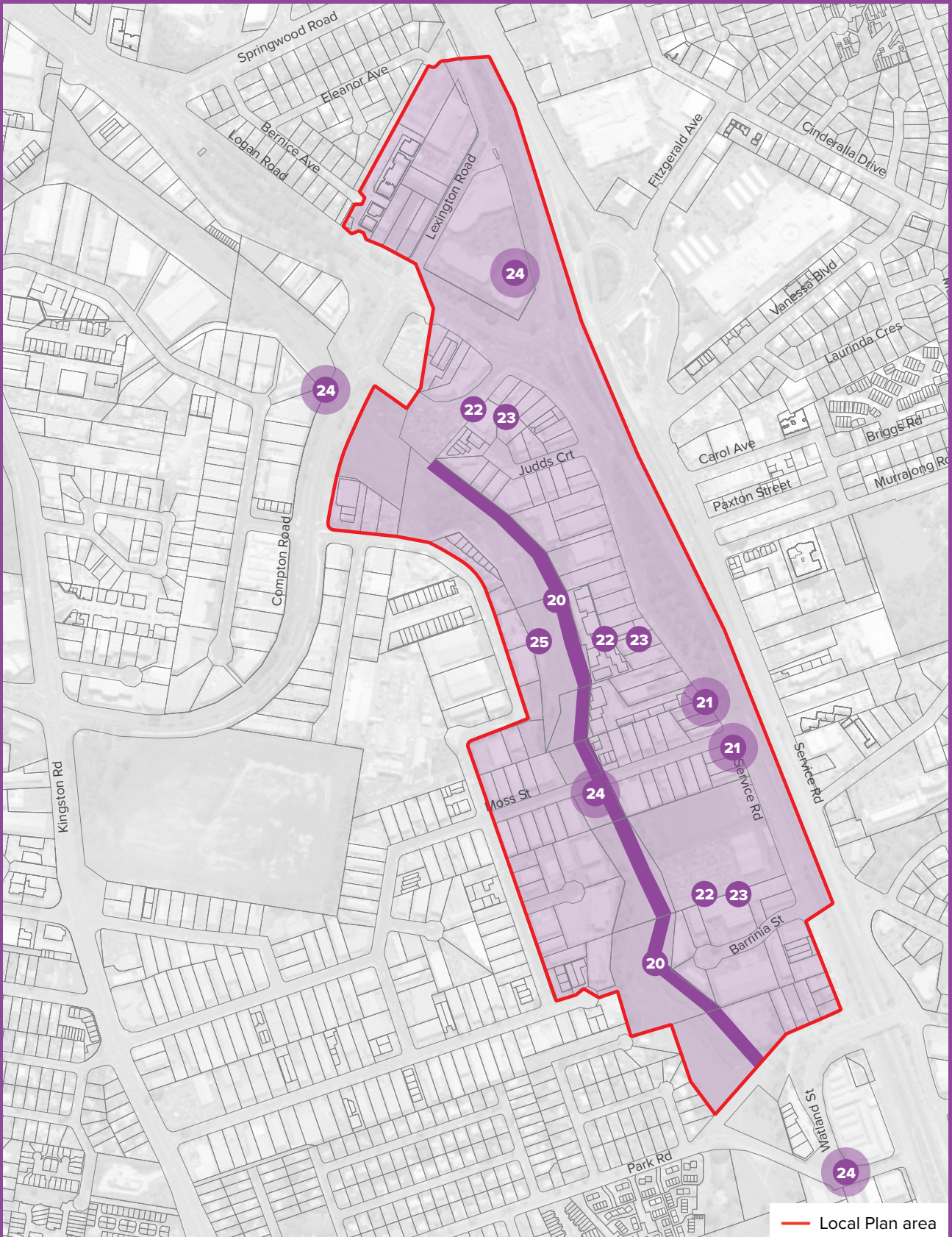
Actions	Timing	Type	Stakeholders
<p>19 ✓ Seek opportunities to utilise the Pacific Motorway (M1) upgrade project for more green space, shade and walkability/active transport Identify opportunities and spaces across and adjacent to the Pacific Highway that can be utilised as future civic and community spaces.</p>	Long term	Project	<p>Lead: ED&CP Support: LCI, Parks, SCI, RIP, AV, DTMR, Fed Government, Local Residents, Community Groups</p>

✓ Summit Outcome





05 Distinctive



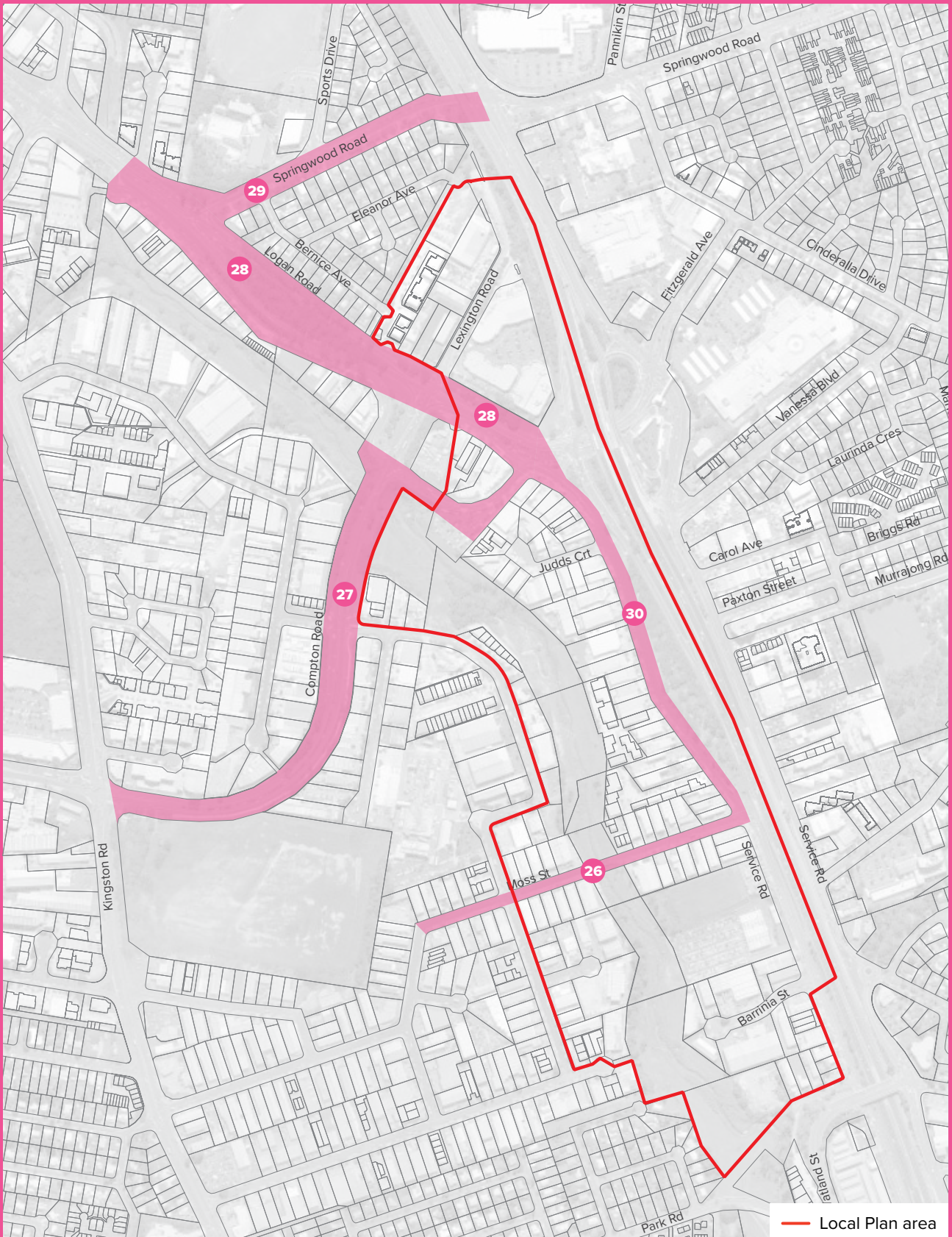
Note: Some number locations are general only and not intended to indicate specific areas.

05 DISTINCTIVE				
Actions	Timing	Type	Stakeholders	
<p>20 ✓ Slacks Creek corridor precinct activation strategy</p> <p>To unlock development potential and activate the Slacks Creek corridor along the proposed new pedestrian and cycle path. Invest in the environmental, cleaning and ‘greening’ and urban farming initiatives as well as sporting, leisure and recreational facilities, active transport, public and street art and economic opportunities.</p>	Short term	Policy	<p>Lead: ED&CP Support: Parks, HEW, LCI, Key Landowners, Local Developers</p>	
<p>21 Facilitate catalyst gateway/landmark buildings</p> <p>Investigate potential and work with developers to develop landmark building at the prominent locations.</p>	Medium term	Program	<p>Lead: ED&CP Support: DA, HEW, Key Landowners, Local Developers</p>	
<p>22 ✓ Slacks Creek Place Branding Strategy</p> <p>Develop a strategic marketing, engagement and media strategy that will define Slacks Creek into the future and guide cohesive stakeholder engagement</p>	Complete	Policy	<p>Lead: ED&CP Support: CC, Business, Community and Development Industry Stakeholders</p>	
<p>23 Implementation of place branding and marketing plan for attracting businesses, investors and residents to Slacks Creek</p> <p>Implementation of Slacks Creek Place Branding Strategy in future marketing for Council projects and documentation, present future identity of Slacks Creek to existing and future stakeholders in the community, business circle and different levels of governments.</p>	Short term	Policy	<p>Lead: ED&CP Support: CC, Business, Community and Development Industry Stakeholders</p>	
<p>24 ✓ Create landscape threshold spaces/entry statements at major road and open space intersections</p> <p>Including the intersection of Paradise Road/Meakin Park/Thompson Park/Mabel Park; and Compton Road and Slacks Creek Open space.</p>	Medium term	Project	<p>Lead: ED&CP Support: LCI, Parks, CC, RIP, Community and Business Groups</p>	
<p>25 ✓ Creative mapping projection with creative art</p> <p>Activate the street and the Slacks Creek Green Link through introduction of street art, public art and lighting. Enhance after hours night time economy for the area.</p>	Short term	Project	<p>Lead: ED&CP Support: DA, Key Landowners, Local Developers</p>	

✓ Summit Outcome



06 Embracing nature



Note: Some number locations are general only and not intended to indicate specific areas.

Actions	Timing	Type	Stakeholders
26 Moss Street streetscape enhancement ✓ Streetscape enhancements inclusive of street planting and water sensitive urban design; smart street and pedestrian lighting; facilitate the undergrounding of power lines; public art and street furniture and hardscape landscaping.	Medium term	Project	Lead: ED&CP Support: LCI, Parks, SCI, RIP, RID, LW, AV, Local Business
27 Compton Road streetscape enhancement up to Cronulla Park ✓ Streetscape enhancements inclusive of street planting and water sensitive urban design; smart street and pedestrian lighting; public art and street furniture; and hardscape landscaping.	Long term	Project	Lead: ED&CP Support: LCI, Parks, SCI, RIP, RID, LW, AV, Local Business
28 Logan Road streetscape enhancement ✓ Streetscape enhancements inclusive of street planting and water sensitive urban design; smart street and pedestrian lighting; public art and street furniture; and hardscape landscaping.	Medium term	Project	Lead: ED&CP Support: LCI, Parks, SCI, RIP, RID, LW, AV, Local Business
29 Springwood Road streetscape enhancement up to Lowe Oval Streetscape enhancements inclusive of street planting and water sensitive urban design; smart street and pedestrian lighting; public art and street furniture; and hardscape landscaping.	Medium term	Project	Lead: ED&CP Support: LCI, Parks, SCI, RIP, RID, CC, Local Community
30 Pacific Motorway Service Road Green Link Streetscape enhancements inclusive of street planting and water sensitive urban design; smart street and pedestrian lighting; facilitate the undergrounding of power lines; public art and street furniture; and hardscape landscaping. This project should be concurrent with Project 11 – Widening of the M1 Motorway.	Medium term	Project	Lead: ED&CP Support: LCI, Parks, SCI, AV, RID, LW, RIP, Federal/ State, DTMR, Local Business

✓ Summit Outcome



CITY OF
LOGAN

SLACKS CREEK

 logan.qld.gov.au