

# Preliminary Advice Upcoming Road Works

Logan City Council is planning road rehabilitation works for Eagle Drive Eagleby

<b>Where</b>	Eagle Drive Eagleby QLD 4207
<b>When</b>	<b>Start</b> Late-May 2024 <b>Finish</b> Mid -September 2024
<b>Work hours</b>	6:30 am to 4:30 pm Monday to Friday Some activities may occur outside of the work hours.
<b>What is happening</b>	Road Works, to be completed by Council include: <ul style="list-style-type: none"><li>• Reconstruction of the road pavement and associated road drainage works where needed</li><li>• General tidying and verge works</li></ul>
<b>Why is it happening</b>	Rectification works will take place from house number 9 to 40 due to cracks and damage on the road surface.
<b>Please note</b>	Start and finish dates may change due to weather or construction conditions. We will provide notice to you the week prior to works starting.

Temporary construction impacts may include:

- loss of street parking and restricted driveway access at times (affected residents will be notified)
- lane closures, traffic congestion and reduced speed limits
- noise, dust, vibration and flashing lights from trucks and machinery
- footpath detours and closures
- potential disruptions to utility services
  - Service provider(s) will notify you of any planned outages.

Thank you for your patience while we work to deliver safer streets for Logan.

## Be prepared

- Do not park vehicles on the road near the closure area.
- Plan your journey and expect delays.
- If we are working outside your property and you need to get in or out, please let us know ahead of time by phone/talk with the traffic controllers.
- Please advise us if there are occupants with health conditions that may require emergency response or healthcare services requiring access.

## Contact us

☎ 07 3412 3412  
✉ [rcmcommunications@logan.qld.gov.au](mailto:rcmcommunications@logan.qld.gov.au)

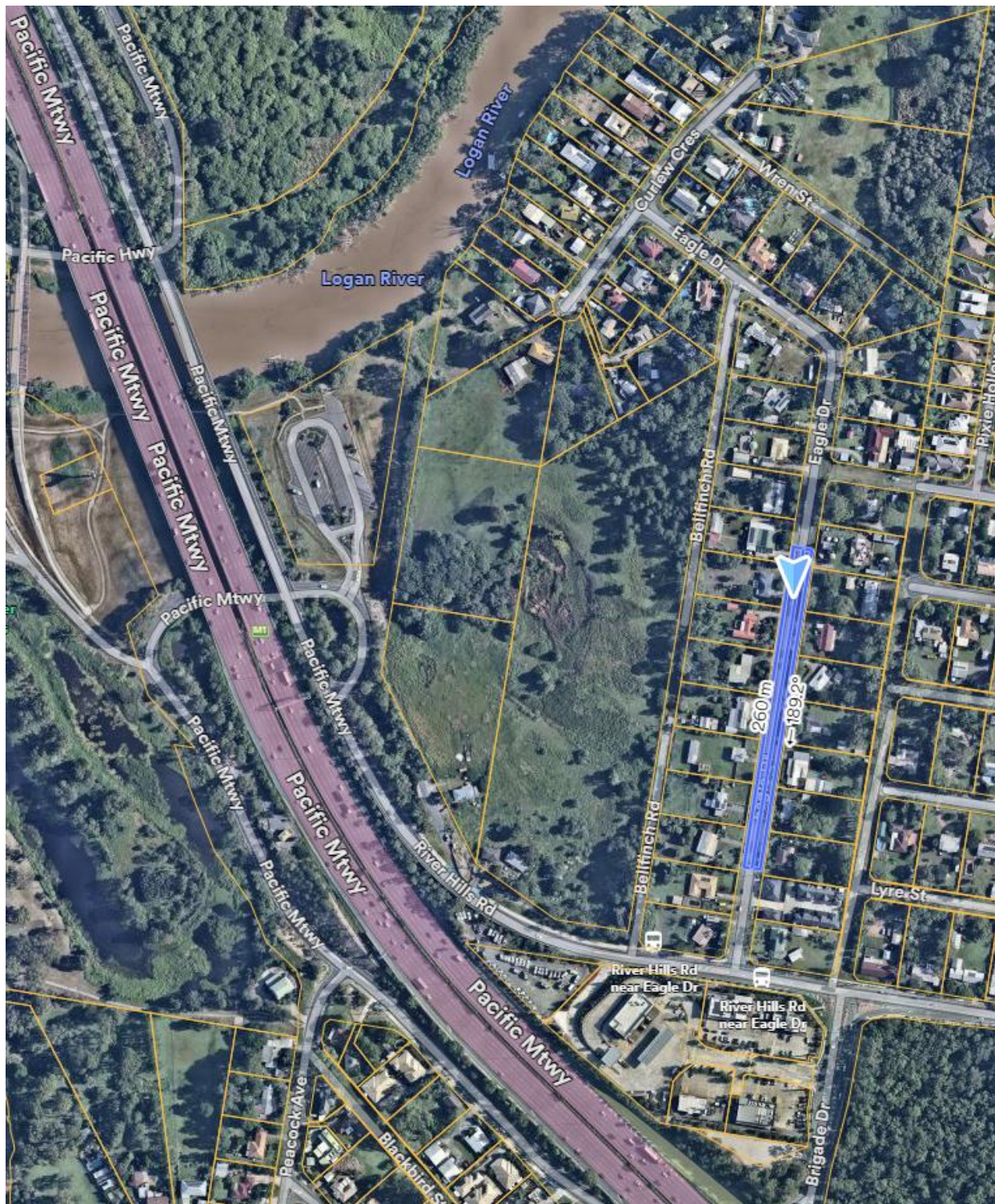


[logan.qld.gov.au](http://logan.qld.gov.au)



# Work Location & Distribution Map

Project Work Area 



# Work Location & Distribution Map



**83 Properties**  
**Print 85 Notices**  
= Distribution Areas