

Upcoming changes to shared paths March 2024

Loganlea Road Major Upgrade

CHANGES TO SHARED PATHS FROM MID-LATE MARCH 2024 (site and weather pending)

- > **Temporary closure** of the shared path from Ray Hodgson Bridge to University Drive (heading south towards Logan Hospital). See Figure 1 and 2, in red below.
- > **Opening** of the new northbound shared path from Ellerslie Road to Ray Hodgson Bridge. See Figure 1 and 2, in green below.
- > Temporary bus stop changes may be in place.
- > Stay safe by following all instructions and remaining inside flagged paths.

Figure 1



Figure 2



Figure 3

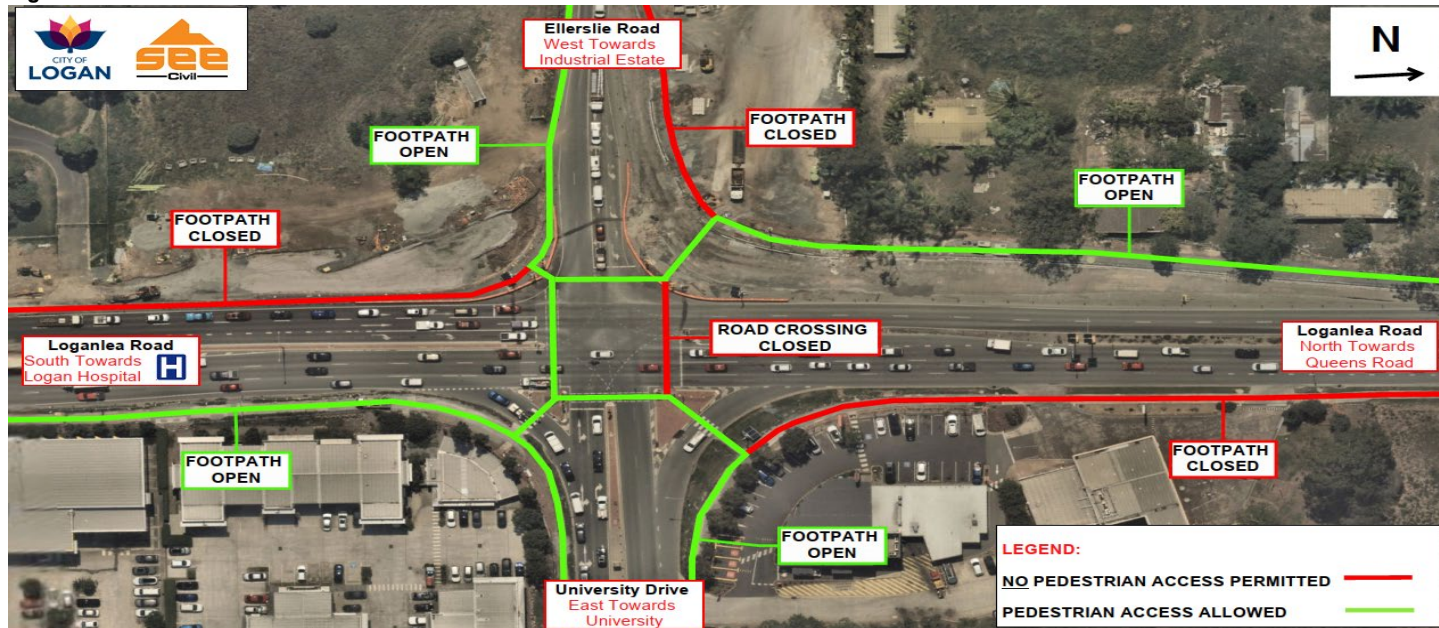
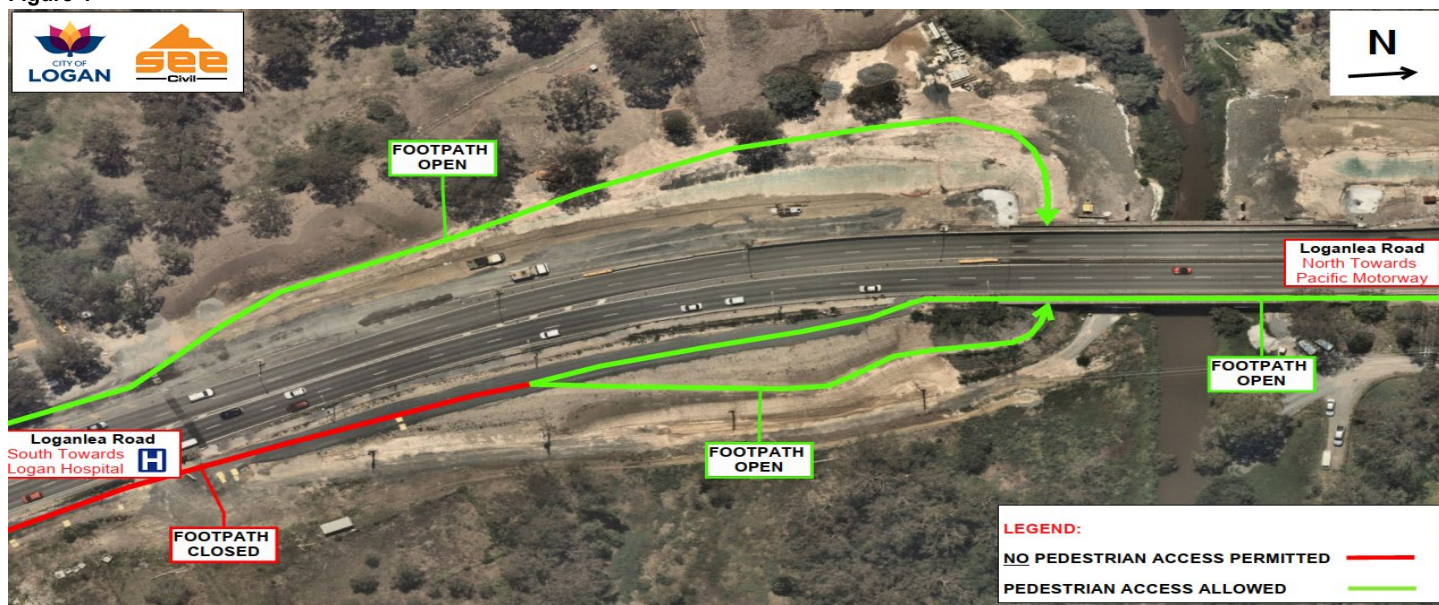


Figure 4



CONTACT US

For more information about construction activities, contact

SEE Civil Community Relations Advisor:

Phone: 0439 235 778

Email: info@SEECivil.com.au

Register for updates:

roadcomms@logan.qld.gov.au

MORE INFORMATION

Scan the QR code below to find out more about the upgrade.

