



# Meadowbrook Implementation Plan

POLICIES, PROGRAMS AND PROJECTS



MEADOWBROOK



## List of Abbreviations

### Logan City Council Branches

<b>AV</b>	Advocacy Program – Office of the CEO
<b>CC</b>	Corporate Communications Branch
<b>CS&amp;I</b>	Customer Service and Information Branch
<b>CS&amp;L</b>	Community Safety and Liveability Branch
<b>DA</b>	Development Assessment Branch
<b>ED&amp;CP</b>	Economic Development and City Planning Branch
<b>ELT</b>	Council’s Executive Leadership Team
<b>HEW</b>	Health, Environment and Waste Branch
<b>LCI</b>	Libraries and Creative Industries Branch
<b>Parks</b>	Parks Branch
<b>RCM</b>	Roads Construction Maintenance Branch
<b>RID</b>	Road Infrastructure Delivery Branch
<b>RIP</b>	Road Infrastructure Planning Branch
<b>SCI</b>	Sports and Community Infrastructure Branch
<b>VE</b>	Venues and Events Branch
<b>LW</b>	Logan Water

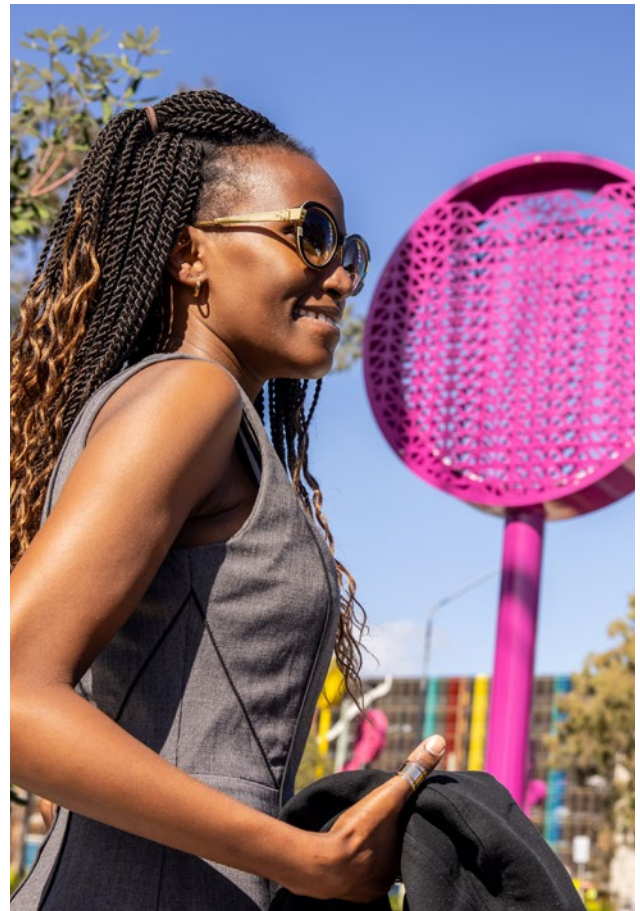
### Other stakeholders

<b>DESBT</b>	Department of Employments, Small Business and Training
<b>DTMR</b>	Department of Transport and Main Roads
<b>GU</b>	Griffith University
<b>QPS</b>	Queensland Police Service
<b>TAFE</b>	TAFE Queensland



## Acknowledgement of Country

Logan City Council acknowledges the Traditional Custodians of the land, water, and country we now call the City of Logan. We pay our respect to Elders past, present and emerging and extend that respect to all Aboriginal and Torres Strait Islander peoples across the city.



# CONTENTS

Introduction . . . . .	5
Meadowbrook priority projects completed . . . . .	9
Meadowbrook priority projects funded . . . . .	13
Priority Policies, Programs and Projects . . . . .	14
01 People focused . . . . .	18
02 Responsive . . . . .	22
03 Connected . . . . .	26
04 Resilient . . . . .	30
05 Distinctive . . . . .	34
06 Embracing nature. . . . .	38



# Introduction

The purpose of the Meadowbrook Implementation Plan is to progress the aims and objectives of the Meadowbrook Master Plan from 'visioning' to 'doing' through the process as set out in Figure 1.

The Implementation Plan does this by identifying and prioritising potential capital and non-capital projects and programs to deliver the actions required to progress the aims and objectives of a master plan. Depending on the type of project or program, these may be delivered by Council, the Queensland Government, the Federal Government, the private sector or the community. Identification and prioritisation are the result of ongoing engagement with stakeholders, ensuring prioritised actions represent the current and future needs of the community, government, industry, business and landowners.

These aspirational projects and programs will assist planning and coordination across Council to deliver the actions required to progress the vision of the Meadowbrook Master Plan. This approach allows Council to commit to a framework to deliver the vision of the master plan over the short term (up to five years), medium term (five to ten years) and long term (more than ten years) whilst allowing a more flexible approach in the delivery of projects and programs.

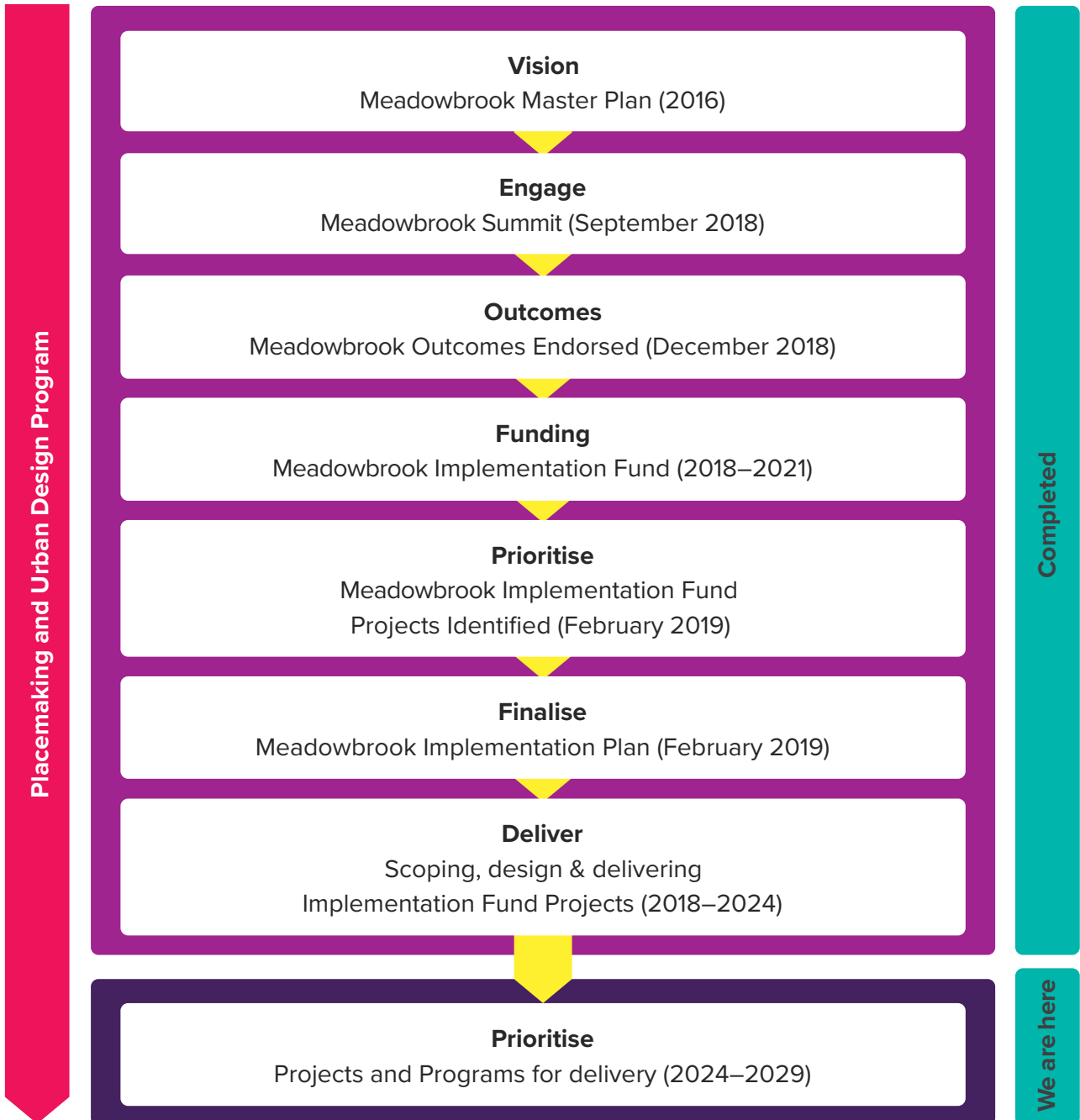
Following the Meadowbrook Summit, several key initiatives and actions were endorsed by Council which were included in the Meadowbrook Implementation Plan. The Implementation Plan has been updated to reflect projects delivered since 2019 and updates to the priority projects, programs, and policies for the next five-year period (2024–2029). New actions have been added where relevant identifying new place making priorities as the city's dynamic centres continue to progress.

Priority projects, programs and policies have been recategorised by applying the overarching principles of Logan's Urban Design Framework (UDF), endorsed by Council (Figure 2). The vision of the UDF is "High quality Urban Design in Logan will drive positive place-based outcomes and is a foundation for all future investment decisions" and therefore provides the appropriate lens to consider the key actions/tasks for the Implementation Plan. When the 6 principles are holistically considered they provide the foundation to create a high-quality built environment that matches the aspirations of its residents. The Urban Design Principles should inform the design, delivery, operation, and maintenance of all development within Logan City Council.

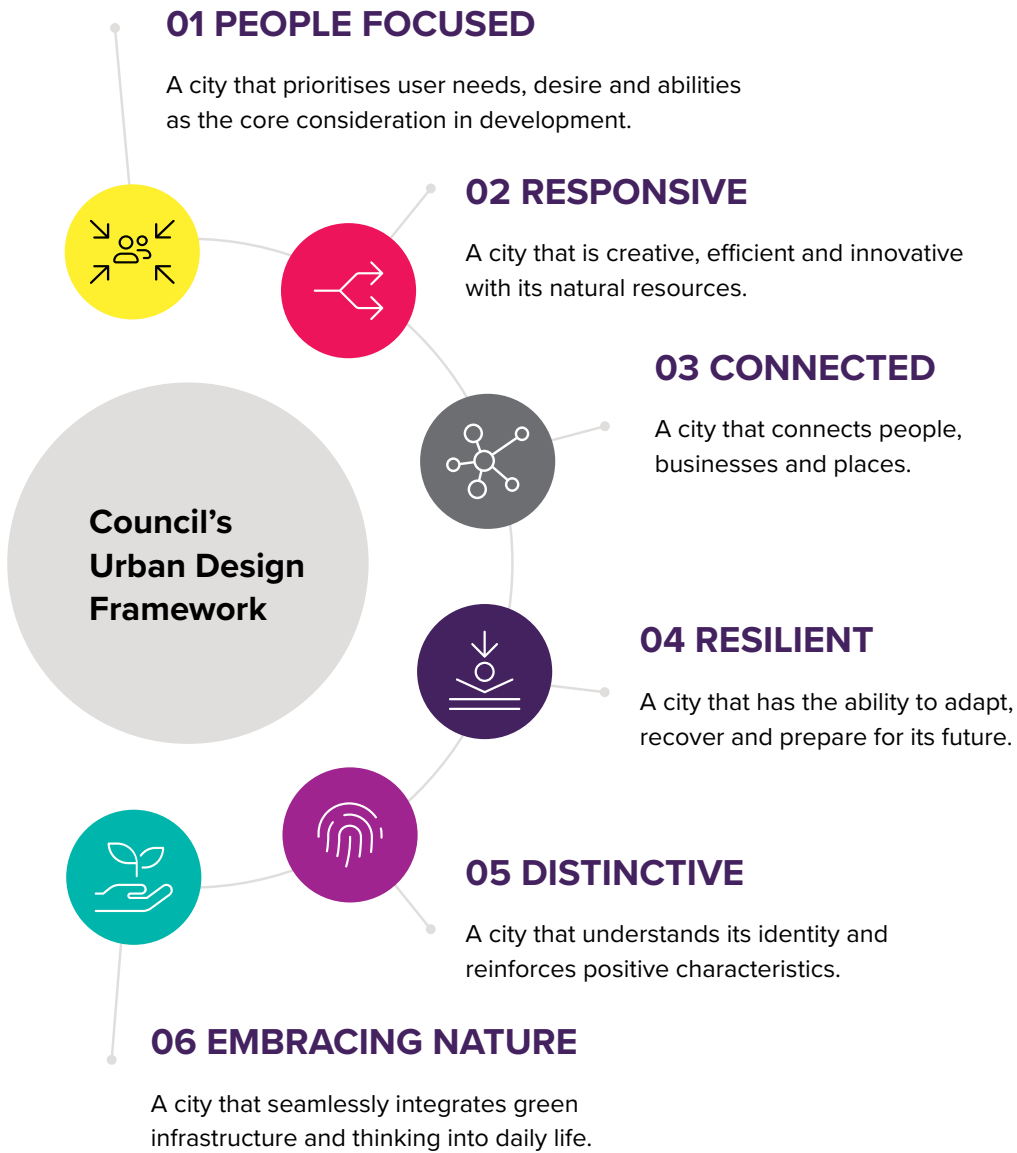
The priority projects and programs recommended for implementation are set out in more detail in this document. The Place Making and Urban Design Program (Economic Development and City Planning Branch) will lead the collaboration across Council, community, and business stakeholders to deliver key actions for the centre. Where identified, the internal branch/es recommended to ideally lead the project is indicated. The priority projects and programs are expected to be updated regularly and do not represent a commitment by Council or other stakeholders to fund or deliver a specific project. The priority projects and programs can be considered for funding, applications for government grants and partnerships with a range of stakeholders that lead to the eventual delivery of the project. The Division 6 Councillor will be consulted on all projects.



**Figure 1 – ‘Visioning’ to ‘Doing’**



**Figure 2 – Logan’s Urban Design Principles**







# Meadowbrook priority projects completed



## Transform Loganlea Road into a Healthy Street

Following the summit in 2018, Council immediately commenced the design of the Loganlea Road Healthy Street project.

The design works involved cross collaboration between Council's Place Management, Creative Industry, Parks (Design), Marketing and Road Infrastructure Design branches to reimagine and rebuild Loganlea Road into a Healthy Street.

The project was officially opened in December 2021. The project has delivered:

- > A new at-grade signalised pedestrian crossing between the Logan Hospital and Meadowbrook Shopping Centre across Loganlea Road, improving connectivity and safety.
- > provision of 1.3 km of shared paths from the existing Loganlea rail station to the Logan Motorway
- > Planting of shrubs, ex-ground bottle trees, established trees and ground covers to create shade, repairing and rebuilding the ecology of the area removal of 4 slip lanes, reclamation pavement for planting, and replacement of all non-DDA compliant infrastructure. Equitable access was enhanced for vulnerable users and those with varying levels of mobility.
- > Ten Logan artists, including First Nation Artists, produced artwork showcased on 10 x 8m high custom illuminated disc structures with individual pieces of artwork, 11 shade structures, and 32 pavement stencils.

- > Reflects Place Branding strategy which examined the history, key features, and future of Meadowbrook. The vibrant Meadowbrook specific colour palette used on the street furniture and artwork/shade structures is derived from this.
- > Installation of custom designed seating, benches, bike racks and bins guided by a Place Branding.
- > new CCTV cameras and upgrade street lighting along the entire corridor.

The final design demonstrates a unique mix of strategic land use planning, branding, curation of artwork within a space, creating a unique place.

The \$5.4 million project was jointly funded by Council and State. The project was awarded a commendation in the Movement and Place category at the 2022 Minister's Urban Design Awards. Council is currently investigating the opportunity to extend the project further south on Loganlea Road, subject to funding.



## Design and construct a new pedestrian link across Loganlea Road

The design and construction of a new at grade signalised pedestrian crossing of Loganlea Road between Logan Hospital and the Meadowbrook Shopping Centre was completed in September 2021, and formally opened in December 2021 in conjunction with the Loganlea Road Healthy Street project.

The signalised intersection includes an elevated mast arm for north bound traffic on Loganlea Road, as well as an advanced warning sign on the crest of a rail crossing to the immediate south in the lead up to the crossing. These measures are above and beyond safety standards required but were provided to protection of all road users.

Post construction monitoring of the new crossing has indicated significant use since commission and provides economic uplift to adjacent businesses given the relative ease of connectivity now possible.

The project was designed collaboratively between within Council's Place Management and Urban Activation Program and Road Infrastructure Design program. The project was supervised and delivered by the Road Infrastructure Delivery team, in conjunction with community engagement. The project with jointly funded by Council and the State Government.

## Street art, public art and lighting

The community directive for Council to provide public art, street art and creative lighting installations was within Meadowbrook to create a sense of place.

As part of the delivery of the Loganlea Road Healthy Street project, Council engaged 9 Logan based artists to prepare works to be translated onto 10 illuminated disc structures, 2 suspended disc shade shelters, and 32 pavement stencils along a 1.3 km stretch of pavement along Loganlea Road. All artworks utilised the Meadowbrook branded colour palette.

The output is a variety of artworks through the centre, which could be integrated into future capital projects within the precinct including private developments, the Loganlea Station Relocation project, Logan Hospital expansion, and future Council projects within Meadowbrook/Loganlea in sporting fields, parks and streetscape upgrades.

## Create the Meadowbrook Leadership Group

In 2018, Council lead work to establish the Meadowbrook Partnership Group (MPG). At present, the MPG is made up of key institutional representatives within the precinct, including:

- > Logan City Council
- > Metro South Health
- > Education Queensland (Loganlea State High School)
- > Brisbane South PHN
- > Griffith University
- > University of Queensland
- > TAFE Queensland Logan Campus
- > Economic Development Queensland
- > Department of State Development, Infrastructure, Local Government and Planning

The MPG is currently chaired by Brisbane South PHN, with Council acting as the Secretariat. The group meets monthly and focuses on core areas for improvement in service provision and infrastructure within Meadowbrook/Logan.

The MPG has acted not only in an advocacy capacity for Meadowbrook but has successfully collaborated in multiple projects including the Logan Hospital expansion, Loganlea Road Healthy Street, Meadowbrook Transport Strategy and Parking Strategies, Griffith University Master Plan and SEQ City Deal 2022.

The MPG will continue to operate and advocate for positive outcomes for Meadowbrook.



## Parking and Travel Demand Management Strategy

Council prepared both a Parking and Travel Demand strategy, working with the Meadowbrook Partnership Group and other relevant internal agencies.

Both reports have been endorsed by Council, with the outcomes to be reflected in the future new Planning Scheme, Logan Plan 2025, currently under development.

Importantly, the key transport and mobility outcomes from the Transport Strategy have determined critical projects within Meadowbrook needed to improve the centre. These projects have been used as part of Council's input into the SEQ City Deal, which allocates \$46m of funding to Meadowbrook/Loganlea for transport related works. Council is working with the Federal and State Government regarding the next phase, which involves project selection finalisation, followed by design and capital delivery. All projects are required to be completed by 2028.

## Develop a Health and Wellbeing Precinct identity, place branding and marketing strategy

Council has prepared a place branding and marketing strategy for Meadowbrook, as well as other key centres such as Logan Central and Jimboomba.

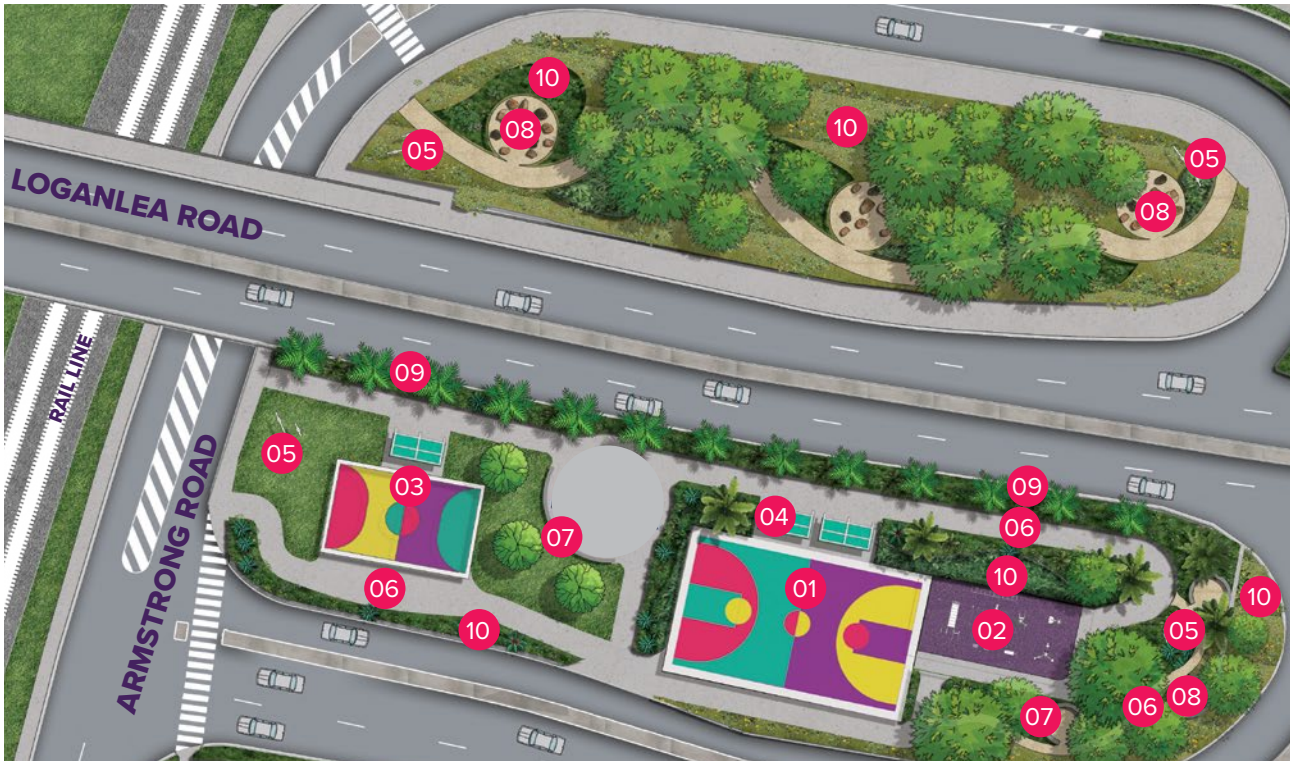
The strategy examined the key points of difference within Meadowbrook to leverage investment opportunities but also to determine the identity of the centre to establish a consistent branding approach.

The output was the Meadowbrook Brand Guidelines, which includes a specific Meadowbrook colour palette, logos that utilise Council's existing branding city wide, and how to prepare collateral works to promote the centre.

Council has utilised this branding strategy, employing the colour palette as part of Loganlea Road Healthy Street (Stage 1) project. The branding has been provided to members of the MPG, to use on upcoming capital projects. The works will also be integrated within the revised Logan Plan 2025.

The marketing strategy assisted in Council's approach to Economic Development within Meadowbrook. Since the Meadowbrook Summit, significant private investment within the centre has occurred, and is planned, including:

- > the Meadowbrook Medical Centre occupied by UQ Healthcare has been completed and opened on Logandowns Drive since 2022
- > QScan now have a facility in the Meadowbrook Centre and has been operating since 2021
- > An Urgent Care Facility has been announced and set to commence over 6–12 Nestor Drive
- > Australian Unity have purchased 18 Nestor Drive, and have proposed a Private Hospital and Hotel
- > A further Private Hospital is proposed over Buttercup Close, immediately adjoining Logan Hospital.



## Legend

- |                                 |                                |                   |
|---------------------------------|--------------------------------|-------------------|
| 01 Multi-use sports court       | 05 Art discs                   | 09 Mural art wall |
| 02 Outdoor gym                  | 06 Walking circuit             | 10 Garden beds    |
| 03 Futsal court                 | 07 Concrete seating            |                   |
| 04 Shelters and picnic settings | 08 Contemplation seating areas |                   |

# Meadowbrook priority projects funded

## Develop a Safer City Strategy for Meadowbrook

Council has commenced several projects to enhance and expand initiatives to improve safety within Meadowbrook. As part of the Loganlea Road Healthy Street (Stage 1) project, 2 additional CCTV cameras were installed, along with significant lighting upgrades on Loganlea Road, Logandowns Drive and part of Edenlea Drive.

Council is currently investigating the installation of further CCTV cameras, lighting upgrades and increase in activation along Loganlea Road as part of the Loganlea Road Healthy Street (Stage 2) project.

Further, Council is in the process of commissioning design and construction of wayfinding signage through the precinct, working in tandem with the Logan Hospital expansion project and Loganlea Station Relocation project to increase legibility and walkability through the precinct.

# Priority Policies, Programs and Projects





	Actions	Timing	Summit Outcome	Type
PEOPLE FOCUSED	1 Increase access to more community, public and event spaces	Medium term	✓	Project
	2 Create shared spaces and public-private interfaces	Medium term	✓	Policy
	3 Investigate the potential to develop a community garden	Medium term	✓	Project
	4 Improve sporting and recreational facilities at Noffke Farm Park	Short to medium term		Project
	5 Provide a greater range of recreational and sporting opportunities at the Meadowbrook Golf Club	Short to medium term		Program
	6 Upgrade sporting facilities at Springwood Sharks Little Athletics Club	Medium to long term		Project
	7 Deliver a Meadowbrook engagement event	<b>Complete</b>		Project
	8 Develop a dedicated events strategy for Meadowbrook	Medium term		Program
	9 Develop an economic, environmental and social scorecard	Long term		Project
	10 Establish partnerships with housing providers and the development industry	Ongoing		Policy
RESPONSIVE	11 Develop a Safer City Strategy for Meadowbrook	Short term	✓	Project
	12 Review and improve maintenance and cleanliness of public spaces and parks	Short term	✓	Project
	13 Parking and Travel Demand Management Strategy	Short term		Project
	14 Develop an updated precinct master plan for the Logan Hospital and TAFE Loganlea campus	Short term		Project
	15 Develop a precinct master plan for the Meadowbrook Golf Club and Logan Picnic Grounds precinct	Short to medium term	✓	Project
	16 Develop a precinct master plan for Griffith University	Medium term		Project
	17 Facilitate the redevelopment of the Riverina stock feed site	Ongoing		Project
	18 Streamline planning and approval processes	Short term		Policy
	19 Provision of multi-storey car parking station	Medium term		Project
	20 Deliver 3D model for the Meadowbrook Activity Centre	Medium	✓	Project

	Actions	Timing	Summit Outcome	Type
CONNECTED	21 Transform Loganlea Road into a 'healthy street'	Ongoing	✓	Project
	22 Design and construct Ellerslie Road upgrades	Medium term	✓	Project
	23 Deliver a new east-west shared pedestrian and vehicle street	Medium to long term	✓	Project
	24 Improve the University Drive Boulevard	Long term	✓	Project
	25 Design and construct a new pedestrian link across Loganlea Road	<b>Complete</b>	✓	Project
	26 Undertake Traffic and Transport modelling for Loganlea Road	<b>Complete</b>	✓	Project
	27 Improve Loganlea Road and Logandowns Drive	<b>Complete</b>	✓	Project
	28 Upgrade the University Drive/Ellerslie Road/ Loganlea Road intersection	Short to medium term	✓	Project
	29 Improve Loganlea Road cycleway infrastructure as part of the Principal Cycle Network	Short to medium term		Project
	30 Create a 'healthy circuit' by connecting residents and key workers back to Logan River	Medium term		Project
	31 Provide a connection between Griffith University and Riverdale Park	Medium term	✓	Project
	32 Create the 'economic link' over the Logan Motorway	Long term	✓	Project
	33 Deliver a new east-west street	Long term		Project
	34 Improve active transport connections	Long term		Project
	35 New cycle connection to Shailer Park	Medium term		Project
	36 New bus connection to Shailer Park	Long term		Project
	37 New bus stops and bus services	Medium term		Project
	38 Upgrades to the Loganlea Train Station	Short term		Project
	39 Advocate for the relocation the Loganlea Train Station	Short term	✓	Project
	40 Decommission high speed clover leaves	Short to medium term		Project
	41 Relocate the Loganlea Train Station	Medium term		Project



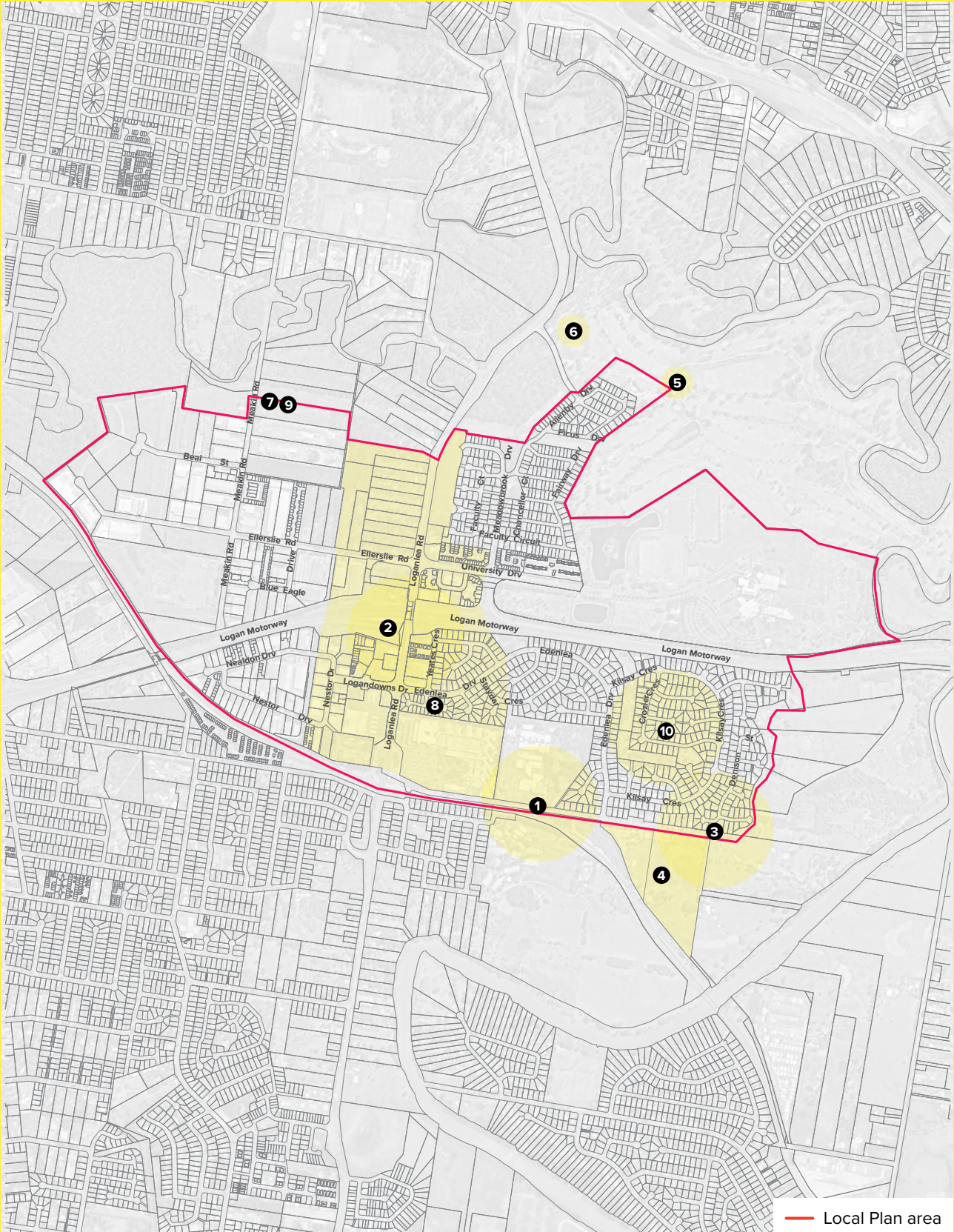


	Actions	Timing	Summit Outcome	Type
RESILIENT	42 New cycle storage infrastructure in the Meadowbrook centre	Medium term		Project
	43 Enhance accessibility and connectivity for service and emergency vehicles	Medium term		Project
	44 Facilitate the delivery of new healthcare services, including a private hospital	Ongoing	✓	Project
	45 Advance the developing specialisations at Griffith University	Short term		Project
	46 Expand the medical research capabilities and trainee placement opportunities at Logan Hospital	Medium term		Project
	47 Logan Hospital expansion	Ongoing	✓	Project
	48 Create a leadership group of key stakeholders	<b>Complete</b>	✓	Project
	49 Generate new investment through competitive advantage	Short term	✓	Project
	50 Develop a targeted investment strategy	ongoing	✓	Policy
	DISTINCTIVE	51 Develop a Street Art Activation Project	Ongoing	✓
52 New wayfinding signage		Medium term		Project
53 Facilitate catalyst gateway/landmark buildings		Ongoing	✓	Project
54 Develop a Health and Wellbeing Precinct identity, place branding and marketing strategy		<b>Complete</b>		Project
55 Identify, promote and advocate for a suite of incentives, grants and subsidies		Short term		Program
56 Develop a Health and Medical Investment Business Case		<b>Complete</b>	✓	Project
57 Provide development incentives for early delivery of catalyst projects		Short term	✓	Program
EMBRACING NATURE	58 Develop a landscape strategy to green Meadowbrook's centre	Medium term	✓	Project
	59 Enhance recreation facilities at Riverdale Park	Short to medium term	✓	Project
	60 Enhance Murray's Environmental Reserve	Medium term		Project
	61 Enhance ecological values of Logan River	Medium term		Project
	62 Enhance ecological values of Slacks Creek	Medium term		Project
	63 Enhance ecological values of Scrubby Creek	Medium term		Project
	64 Provide new landscape entry statements and landscape thresholds	Medium term		Project





# 01 People focused



01 PEOPLE FOCUSED				
Actions	Timing	Type	Stakeholders	
<b>1</b> ✓ <b>Increase access to more community, public and event spaces</b> Council to work with key institutions and local landowners to investigate access to existing spaces and provide potential spaces to facilitate community meetings and events, inclusive of place making events such as markets, food trucks and concerts.	Medium term	Project	<b>Lead: ED&amp;CP</b> Support: DA, SCI, CF, State Government, Housing providers, Developers	
<b>2</b> ✓ <b>Create shared spaces and public-private interfaces</b> Shared spaces and public-private interfaces can be used as meeting places/event spaces along frontages to Loganlea Road, secondary roads and key sites in the centre, created by working collaboratively with the development sector and including planning provisions in the future Meadowbrook local plan.	Medium term	Policy	<b>Lead: ED&amp;CP</b> Support: DA, SCI, Local landowners, Developers	
<b>3</b> ✓ <b>Investigate the potential with the local community for a community garden in Meadowbrook</b> Engage with key stakeholders and the community, inclusive of identifying potential sites, to provide Support: and advice to community groups with an interest in establishing a community garden.	Medium term	Project	<b>Lead: SCI</b> Support: Parks, HEW, ED&CP, Local residents, Community, Griffith University, TAFE	
<b>4</b> <b>Improve sporting and recreational facilities upgrades at Noffke Farm Park</b> Facilitate upgrades of buildings (new clubhouse; demolition of existing dilapidated buildings) and sporting fields used by Waterford Rugby League Football Club. The existing unformed car parking areas may also be formalised.	Short to medium term	Project	<b>Lead: SCI</b> Support: Parks, ED&CP, CC, AV, Community, Waterford Rugby League Football Club	
<b>5</b> <b>Provide a greater range of recreational and sporting opportunities at the Meadowbrook Golf Club</b> Work with the golf club lease holders to facilitate the upgrade and refurbishment of the clubhouse and user facilities for the broader community. This may include the Meadowbrook Golf Club, Council and business sector to exploring the use of the site and facilities for additional events.	Short to medium term	Program	<b>Lead: ED&amp;CP</b> Support: Admin, Parks, SCI, CC, Meadowbrook Golf Club, Australian Golf Management Corporation	
<b>6</b> <b>Upgrade sporting facilities at Loganlea Picnic Grounds</b> Assist the athletics club lease holder to upgrade on-site facilities and improve pedestrian and cycle connections	Medium to long term	Project	<b>Lead: SCI</b> Support: Parks, ED&CP, CC, Community, Springwood Sharks Little Athletics Club	

## 01 PEOPLE FOCUSED

Actions	Timing	Type	Stakeholders
<p><b>7 Deliver a Meadowbrook engagement event</b> The Meadowbrook Summit was delivered to engage with the community, stakeholders and investors to advance Meadowbrook as a centre for health, education, wellbeing and community.</p>	Complete	Project	<p><b>Lead: ED&amp;CP</b> Support: CC, CS&amp;I, CF</p>
<p><b>8 Develop a dedicated events strategy for Meadowbrook to attract more frequent and a greater variety of events and activities</b> Prepare and deliver programmed entertainment events including the use of temporary or 'pop up' initiatives (such as markets, food trucks, children's activities), professional/academic events (workshops, seminars, conferences) and sporting events to activate the area and promote Meadowbrook as a place for health, knowledge and community. The strategy would be advanced through partnerships with key stakeholders including TAFE, Griffith University, Meadowbrook Golf Club, Loganlea High School, community organisations and local businesses.</p>	Medium term	Program	<p><b>Lead: ED&amp;CP</b> Support: CC, SCI, Community, Local businesses</p>
<p><b>9 Develop an economic, environmental and social scorecard</b> Establish diverse qualitative and quantitative measures that provide government, businesses and the community with an indication of the overall environmental, social and economic benefits of the key catalyst projects.</p>	Long term	Project	<p><b>Lead: ED&amp;CP</b> Support: CS&amp;I, HEW, SCI, CC, Community stakeholders</p>
<p><b>10 Establish partnerships with housing providers and the development industry</b> Facilitate the early delivery of innovative residential accommodation.</p>	Ongoing	Policy	<p><b>Lead: ED&amp;CP</b> Support: DA, SCI, CF, State Government, investLogan, Housing providers, Developers</p>

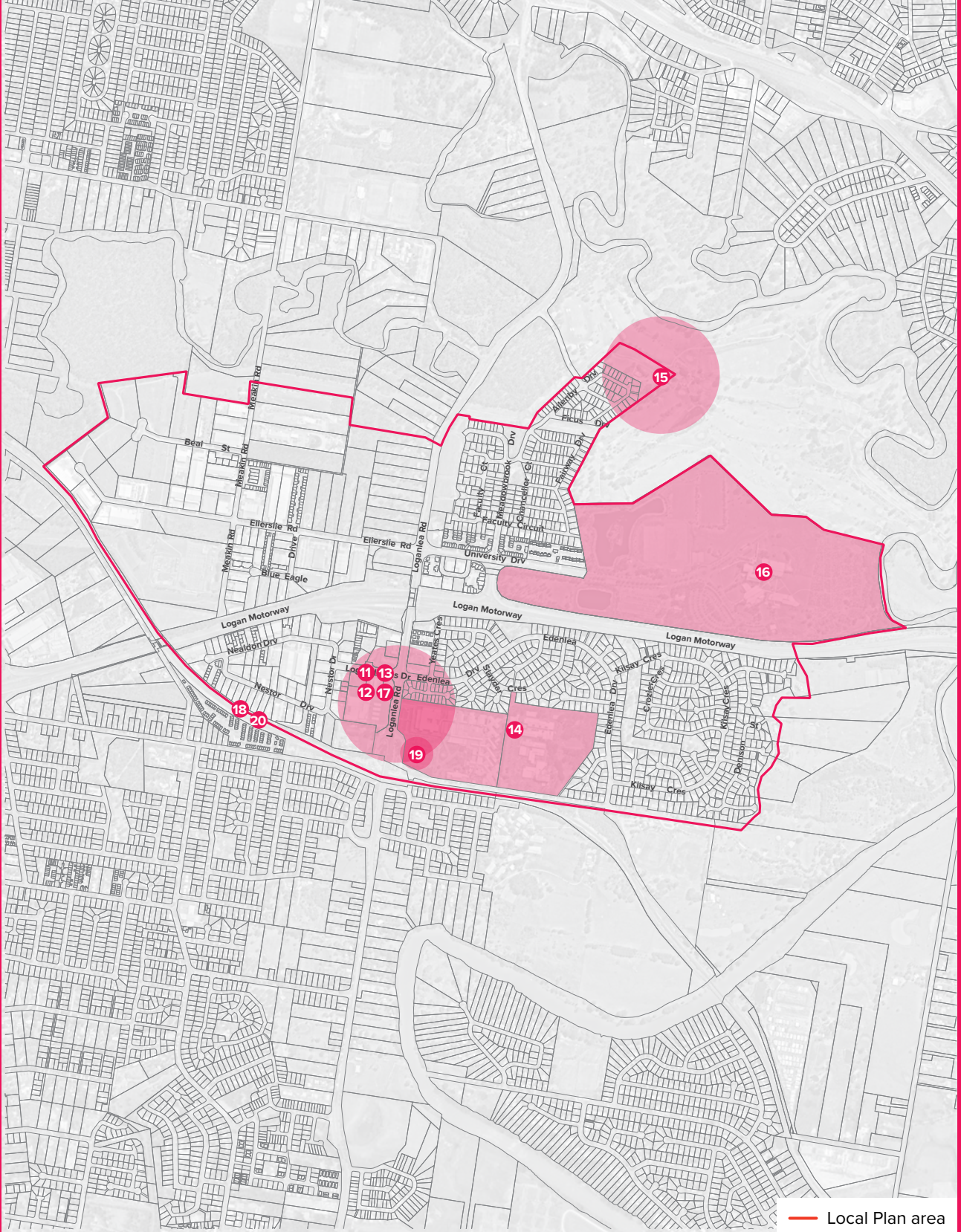
✓ Summit Outcome







# 02 Responsive



## 02 RESPONSIVE

Actions	Timing	Type	Stakeholders
<p><b>11</b> <b>Develop a Safer City Strategy for Meadowbrook</b></p> <p>✓ The Strategy will provide the guidelines to create an activity centre where people feel safe, connected and happy to move about at any time of the day or night, inclusive of:</p> <ol style="list-style-type: none"> <li>1. A CPTED (Crime Protection Through Environmental Design) Safer by design assessment of Meadowbrook.</li> <li>2. Upgrade and expand the safety camera network inclusive of providing CCTV at key locations along the pedestrian and cycle network, pedestrian underpasses, the Loganlea Train Station, areas around the hospital, shopping centres and industrial estates.</li> <li>3. Partnering with the Queensland Police Service to assess and develop the Safer City Strategy.</li> </ol> <p>The strategy will nominate short term actions and activation events, and may involve advocacy to the Queensland Government and relevant grant submissions to other levels of government</p>	Short term	Project	<p><b>Lead: SCI</b></p> <p>Support: HEW, RIP, Parks, CC, ED&amp;CP, AV, Local residents, Local businesses, Community, QPS</p>
<p><b>12</b> <b>Review and improve maintenance and cleanliness of public spaces and parks</b></p> <p>✓ Council to conduct an audit of maintenance of roads, verge areas, rubbish removal and maintenance of parks to ensure best practice is applied. This may extend to identifying maintenance and cleanliness issues associated with State Government assets (e.g. Loganlea Train Station) and associated advocacy to the relevant departments.</p>	Short term	Project	<p><b>Lead: RCM/Parks</b></p> <p>Support: RCM, ED&amp;CP, Parks, AV, CF, DTMR, QR, Community</p>
<p><b>13</b> <b>Parking and Travel Demand Management Strategy</b></p> <p>Review the location and extent of short and long term parking, potential for share car and share bike stations, future development and feasibility of additional car parking facilities. The strategy is to include actions to encourage higher levels of active and public transport use. The strategy can also manage and mitigate impacts of loss of car parking and increased trips generated during and after the construction period of the Logan Hospital expansion construction period. The strategy will investigate improvements and provision of car parking in the vicinity of the Loganlea Train Station.</p>	Short term	Project	<p><b>Lead: ED&amp;CP</b></p> <p>Support: RIP, RID, CC, CS&amp;I, Local residents, Metro South Health, DTMR, QR, TAFE, DESBT</p>
<p><b>14</b> <b>Develop an updated precinct master plan for the Logan Hospital and TAFE Loganlea campus</b></p> <p>Work with key stakeholders to ensure planning for the precinct is current and maximises synergies and opportunities.</p>	Short term	Project	<p><b>Lead: QHealth</b></p> <p>Support: ED&amp;CP, DA, RIP, CF, SCI, TAFE, DESBT, Metro South Health</p>

<b>02 RESPONSIVE</b>				
<b>Actions</b>	<b>Timing</b>	<b>Type</b>	<b>Stakeholders</b>	
<b>15</b> ✓ <b>Develop a precinct master plan for the Meadowbrook Golf Club and Logan Picnic Grounds precinct</b> Work with lease holders to develop a precinct master plan that will identify development, sporting, recreation and event opportunities in the precinct.	Short to medium term	Program	<b>Lead: AD</b> Support: ED&CP, DA, HEW, RIP, Parks, Meadowbrook Golf Club, Australian Golf Management Corporation	
<b>16</b> <b>Develop a precinct master plan for Griffith University Logan Campus</b> Work with key stakeholders to develop a plan that will broaden the range of land uses, drive increases in student numbers and allow opportunities for research and industry partnerships, especially those which may facilitate employment pathways, research and development, and commercialisation. The precinct master plan may also include opportunities for co-location with other stakeholders, both on the campus site and across the Meadowbrook precinct.	Medium term	Project	<b>Lead: GU</b> Support: ED&CP, DA, RIP, CF, SP, SCI, Students, Local residents	
<b>17</b> <b>Facilitate the redevelopment of the Riverina stock feed site</b> Through active engagement with the landowner and development proponents, explore opportunities such as developing a site master plan and assisting in relocation.	Ongoing	Project	<b>Lead: ED&amp;CP</b> Support: DA, RIP, Riverina, Development sector	
<b>18</b> <b>Streamline planning and approval processes for desirable uses in the centre</b> Review and make recommendations to streamline planning and approval processes for desirable retail, dining and service-based land uses in the Meadowbrook centre, inclusive of the future Meadowbrook local plan, business licensing and permits.	Short term	Policy	<b>Lead: ED&amp;CP</b> Support: DA, Local residents, Development sector	
<b>19</b> <b>Develop a multi-level car parking station for the hospital</b> Work with Metro South Health to deliver a large multi-level car park at Logan Hospital as part of hospital expansion. The multi-level car park should be built as part of enabling works associated with the hospital expansion and be of sufficient size to service the car parking demand generated by the hospital and its expansion. Council will advocate for this project, and seek to ensure the built form, interfaces and landscaping represent best practice.	<b>Complete</b>	Project	<b>Lead: QHealth</b> Support: ED&CP RIP, DA, AV, Community and business groups, Metro South Health	
<b>20</b> ✓ <b>Deliver a 3D model for the Meadowbrook Activity Centre</b> The model will be used as a lead planning tool to prioritise and coordinate Council's capital and non-capital projects and programs in the activity centre.	Medium	Project	<b>Lead: ED&amp;CP</b> Support: DA, CF, Community, Developers	

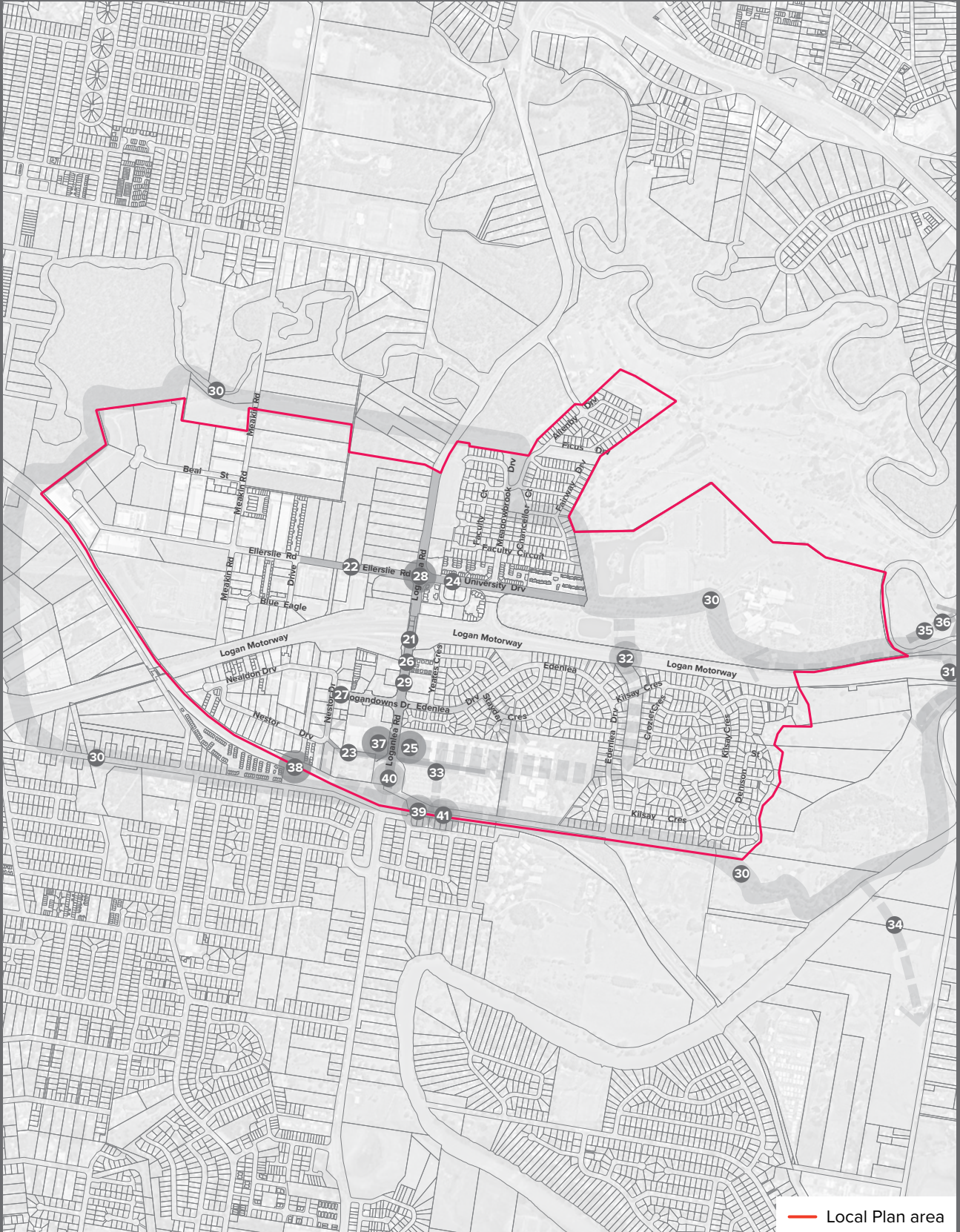
✓ Summit Outcome







# 03 Connected



### 03 CONNECTED

Actions	Timing	Type	Stakeholders
<p><b>21</b> ✓ <b>Transform Loganlea Road into a ‘healthy street’</b></p> <p>Streetscape enhancements inclusive of pedestrian and cycle infrastructure, better and safer pedestrian connectivity, street planting and shade, smart lighting, water sensitive urban design, integration of new linear bus-stops, public art, street furniture and high-quality interfaces and spaces between public and private areas. Safety through lighting, casual surveillance and activation will form part of the project. The transformation of Loganlea Road will occur over time, the prioritised improvements occurring in a staged manner.</p>	Ongoing	Project	<p><b>Lead: ED&amp;CP</b></p> <p>Support: RIP, RID, CC, CS&amp;I, SCI, LCI, Parks, WI, Local business, Local landowners, Community, Metro South Health</p>
<p><b>22</b> ✓ <b>Design and construct Ellerslie Road upgrades</b></p> <p>Road upgrades will include the upgrading of the entrance into the industrial estate, road verge and footpaths, verge street planting and water sensitive urban design, smart pedestrian lighting and hardscape landscaping.</p>	Medium term	Project	<p><b>Lead: ED&amp;CP</b></p> <p>Support: DS, RIP, RID, Parks, LCI, WI, Local residents, Community</p>
<p><b>23</b> ✓ <b>Deliver a new east-west shared pedestrian and vehicle street</b></p> <p>The new road will be delivered in partnership with the Logan Hospital, the Woolworths shopping centre and the Riverina stock feed site inclusive of landscaping, smart lighting, water sensitive urban design public art, street furniture and high-quality interfaces and spaces between public and private areas.</p>	Medium to long term	Project	<p><b>Lead: ED&amp;CP</b> Support: DA, RIP, Parks, SCI</p> <p>Local business, Metro South Health, Community</p>
<p><b>24</b> ✓ <b>Improve the University Drive Boulevard</b></p> <p>Undertake streetscape enhancements inclusive of street planting and water sensitive urban design, smart street and pedestrian lighting, public art and street furniture and hardscape landscaping</p>	Long term	Project	<p><b>Lead: ED&amp;CP</b> Support: Parks, ED&amp;CP, RIP, RID, LCI, WI, SCI, Local residents, Community</p>
<p><b>25</b> ✓ <b>Design and construct a new pedestrian link across Loganlea Road</b></p> <p>Link Logan Hospital to the Woolworths shopping centre with a new pedestrian link, inclusive of traffic engineering studies to determine if a pedestrian crossing is feasible. The project may include other changes to Loganlea Road to ensure traffic flow.</p>	Complete	Project	<p><b>Lead: ED&amp;CP</b> Support: RIP, RID, CS&amp;I, WI, SCI, Metro South Health, Local businesses</p>
<p><b>26</b> ✓ <b>Undertake traffic and transport modelling for Loganlea Road and surrounding road network</b></p> <p>Traffic analysis and transport modelling that takes into consideration the planned redevelopment of the Logan Hospital will be undertaken and coordinated with the associated works and projects with the State Government to manage traffic on Loganlea Road.</p>	Complete	Project	<p><b>Lead: ED&amp;CP</b> Support: RIP, CS&amp;I, Metro South Health, TAFE</p>

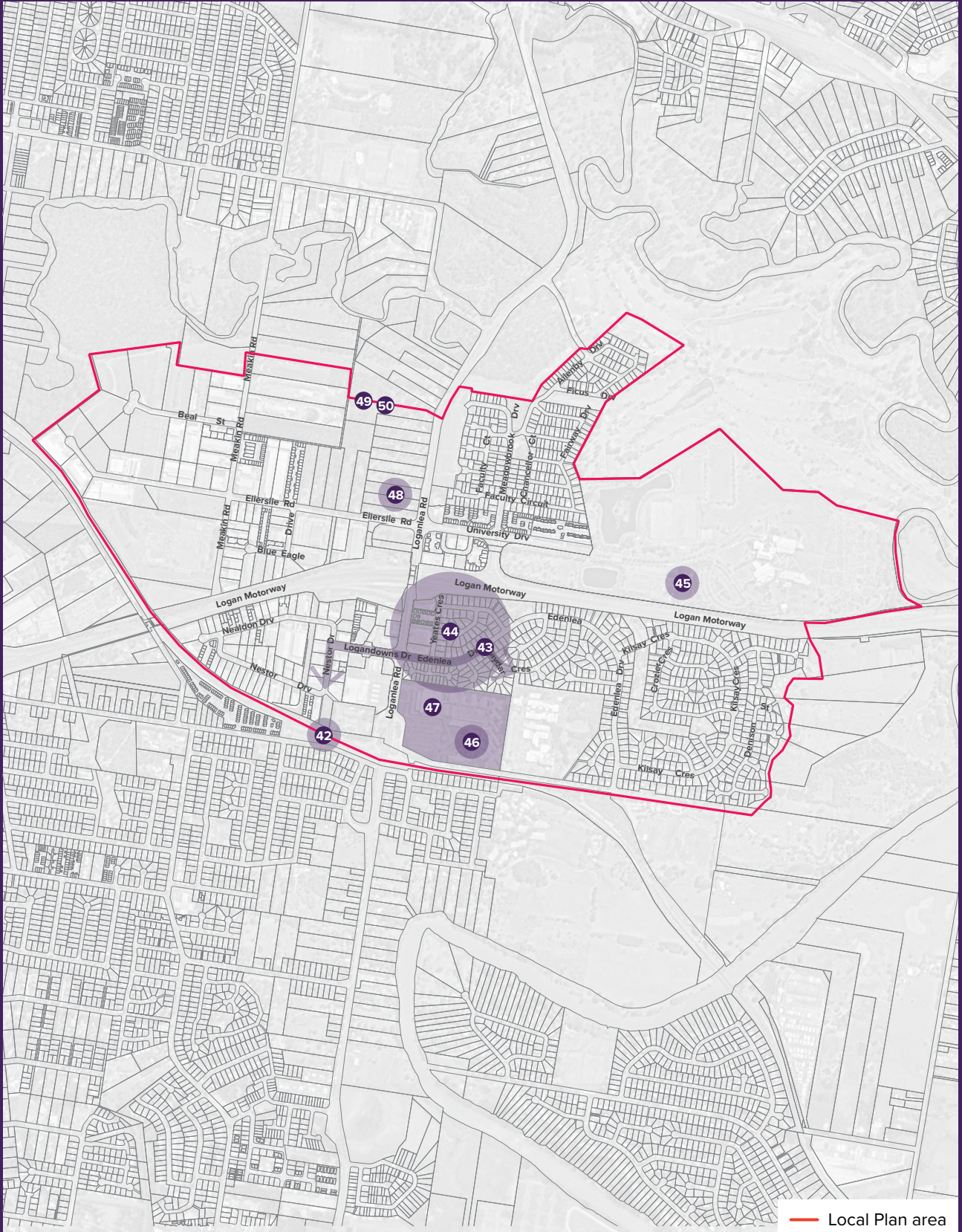
03 CONNECTED				
Actions	Timing	Type	Stakeholders	
<p><b>27</b> <b>Improve Loganlea Road and Logandowns Drive</b></p> <p>✓ Upgrade the roads by reconfiguring lanes, line marking and improve traffic signal synchronisation to increase capacity, improve flow and reduce congestion in line with best practice traffic engineering.</p>	<p><b>Loganlea Rd – Complete</b></p> <p>Logandowns Dr – Medium term</p>	Project	<p><b>Lead: RIP</b></p> <p>Support: RID, RCM, ED&amp;CP, Community, Local businesses</p>	
<p><b>28</b> <b>Upgrade the University Drive/Ellerslie Road/ Loganlea Road intersection</b></p> <p>✓ The intersection upgrade will increase capacity, improve flow and reduce congestion, inclusive of dual right turn lanes from Loganlea Road to University Drive.</p>	Short to medium term	Project	<p><b>Lead: RIP</b></p> <p>Support: RID, RCM, ED&amp;CP, Community</p>	
<p><b>29</b> <b>Improve Loganlea Road cycleway infrastructure as part of the Principle Cycle Network</b></p> <p>Improve connections between key transport, employment and recreational destinations. This may be delivered as part of an integrated ‘healthy street’, comprising of improved off-road shared cycle paths.</p>	Short to medium term	Project	<p><b>Lead: ED&amp;CP</b></p> <p>Support: RIP, RID, Parks, CS&amp;I, SCI, Heart Foundation, Community, DTMR</p>	
<p><b>30</b> <b>Create a ‘healthy circuit’</b></p> <p>Connect residents, students and workers back to Logan River and the open space network at the edge of the centre by improving, upgrading and providing new pedestrian and cycling connectivity.</p> <p>The project would integrate with new wayfinding signage to improve how people understand and move around Meadowbrook.</p>	Medium term	Project	<p><b>Lead: ED&amp;CP</b></p> <p>Support: Parks, RIP, CC, RID, WI, SCI, Community, Heart Foundation, GU/TAFE, Loganlea State High School</p>	
<p><b>31</b> <b>Provide a new pedestrian and cycle connection between Griffith University and Riverdale Park</b></p> <p>✓ Design and develop a new pedestrian and cycle pathway as a key component of the ‘healthy circuit’.</p>	Medium term	Project	<p><b>Lead: ED&amp;CP</b></p> <p>Support: Parks, SCI, CC, RIP, RID, WI, Community, Heart Foundation, GU, DTMR</p>	
<p><b>32</b> <b>Create the ‘economic link’ over the Logan Motorway</b></p> <p>✓ Provide a high amenity pedestrian connection over the Logan Motorway, linking Griffith University to Logan Hospital, TAFE, Loganlea Train Station and Loganlea State High School. This may involve formal advocacy to the State Government.</p>	Long term	Project	<p><b>Lead: ED&amp;CP</b> Support:</p> <p>RIP, Parks, SCI, CC, AV, SCI, Community, Heart Foundation, GU/ TAFE Loganlea State High School, State Government, DTMR, Transurban, Metro South Health</p>	
<p><b>33</b> <b>Deliver a new east-west street</b></p> <p>The new street to be created between Logan Hospital, the Woolworths shopping centre and the Riverina stock feed site, inclusive of new connections between Armstrong Road and Nestor Drive, and between Loganlea Road and Armstrong Road.</p>	Long term	Project	<p><b>Lead: QHealth</b></p> <p>Support: ED&amp;CP, DA, RIP, RID, WI,</p>	
<p><b>34</b> <b>Improve active transport connections</b></p> <p>Review and upgrade connections to the broader area around Meadowbrook inclusive of connections to the ‘healthy circuit’, such as links to aged care in Bethania and links across the Logan River from Riverdale Park.</p>	Long term	Project	<p><b>Lead: RIP</b></p> <p>Support: ED&amp;CP, Parks, CS&amp;I, CC, SCI, Community, Local businesses</p>	

03 CONNECTED				
Actions	Timing	Type	Stakeholders	
<b>35 New cycle connection to Shailer Park</b> Provide an active transport connection between Griffith University and the Hyperdome precinct and surrounding areas of Shailer Park and Loganholme. This will be via Murray's Road to the Mandew Street overpass. The initial link may be in the form of a cycle route and mature into a bus route.	Medium term	Project	<b>Lead: RIP</b> Support: ED&CP, RID, Parks, CS&I, SCI, Heart Foundation, GU	
<b>36 New bus connection to Shailer Park</b> Provide bus access from Griffith University to the Hyperdome precinct and surrounding areas of Shailer Park and Loganholme. This aspirational bus/road linkage will be provided in collaboration with the State Government.	Long term	Project	<b>Lead: RIP</b> Support: ED&CP, RID, Parks, CS&I, AV, State Government Translink/DTMR, GU	
<b>37 New bus stops and bus services</b> Work with Translink to improve bus services, inclusive of attractive linear bus stations (premium stops) on both sides of Loganlea Road, signature bus stops at other major activity generators (e.g. Griffith University – Logan Campus, TAFE Loganlea campus) and improve pedestrian connections.	Medium term	Project	<b>Lead: RIP</b> Support: ED&CP, CS&I, Parks, Translink, Local businesses, GU, TAFE, Community	
<b>38 Upgrades to the Loganlea Train Station</b> Improve equitable access to the station and provide a new connecting bridge between Meadowbrook and Loganlea. If this project progresses, improvements to pedestrian connections, cycle infrastructure and public spaces in and around the station are to be prioritised. Advocate to the State Government to influence outcomes.	Short term	Project	<b>Lead: DTMR</b> Support: ED&CP, AV, RIP, RID, CS&I, Queensland Rail, Translink, Logan Hospital, TAFE, Community	
<b>39 Advocate for the relocation the Loganlea Train Station</b> ✓ Assist the state government to explore opportunities to relocate the Loganlea Train Station 350m to the east. The relocation would consider improving access to the centre, including the Logan Hospital, TAFE and connection to the Loganlea State School. Advocacy will seek to advance prioritisation of the relocation of the Loganlea Train Station when considering upgrading of the existing Loganlea Train Station.	Short term	Project	<b>Lead: ED&amp;CP</b> Support: AV, RIP, RID, CS&I, Queensland Rail, Translink Economic Development Queensland, Logan Hospital, TAFE, Community	
<b>40 Decommission the high speed clover-leafs and slipways from Loganlea Road</b> Create a functional local road network, inclusive of new roads connecting through the Riverina site and the Logan Hospital site	Short to medium term	Project	<b>Lead: ED&amp;CP</b> Support: RIP, RID, CS&I, Local businesses, Logan Hospital, Queensland Rail, Translink	
<b>41 Relocate the Loganlea Train Station</b> The relocation of the station 350 m to the east provides an integrated transport hub close to Logan Hospital, TAFE and connection to the Loganlea State School. The relocated train station may offer volumetric and adjacent development opportunities to the station and catalyse revitalisation of Loganlea.	Medium term	Project	<b>Lead: DTMR</b> Support: ED&CP, RIP, RID, CS&I, Queensland Rail, Translink, Logan Hospital, TAFE, Community	

✓ Summit Outcome



# 04 Resilient



04 RESILIENT				
Actions	Timing	Type	Stakeholders	
<p><b>42 Develop new cycle storage infrastructure in the Meadowbrook centre</b></p> <p>The facilities may include the new/upgraded facilities at the Loganlea Train Station (current and/or future relocated train station), Slacks Creek bus interchange, shopping centres, Logan Hospital, Griffith University, TAFE and in the Edenlea Drive area.</p>	Medium term	Project	<p><b>Lead: ED&amp;CP</b> Support: RIP, RID, Parks, CS&amp;I, Heart Foundation, GU/ TAFE</p>	
<p><b>43 Enhance accessibility and connectivity for service and emergency vehicles</b></p> <p>Limit service vehicle access along Loganlea Road and 'create a service vehicle loop' within the centre, by avoiding movement through local access roads and conflict between service vehicles and other road users.</p>	Medium term	Project	<p><b>Lead: ED&amp;CP</b> Support: RIP, RID, CS&amp;I, Local businesses, Logan Hospital</p>	
<p><b>44 Facilitate the delivery of new healthcare services, including a private hospital</b></p> <p>Collaboratively deliver new and integrated healthcare services at key locations across the centre, assisted by Meadowbrook's key stakeholders (a future leadership group), by identifying potential locations, engaging with public and private providers, and coordinating landowners, developers, investors and industry professionals. This action will be integrated with the creation of a future leadership group and the development of a targeted investment strategy for Meadowbrook.</p>	Ongoing	Project	<p><b>Lead: ED&amp;CP</b> Support: CC, DA, Healthcare industry, Metro South Health State Government, Griffith University, Developers</p>	
<p><b>45 Advance the development of specialisations at Griffith University</b></p> <p>Focusing on the academic and research strengths of the university, work with Griffith University to develop specialisations at the university inclusive of increasing the scale and number of centres of excellence, research and translation hubs, and industry sponsored facilities.</p>	Short term	Project	<p><b>Lead: GU</b> Support: ED&amp;CP, CF, SP, AV, Federal Government, State Government</p>	
<p><b>46 Expand the medical research capabilities and trainee placement opportunities at Logan Hospital</b></p> <p>Work with Metro South Health to expand employment and training opportunities as part of the ongoing expansion of Logan Hospital.</p>	Medium term	Project	<p><b>Lead: QLDHEALTH</b> Support: ED&amp;CP, DA, CF, AV, SP Metro South Health, TAFE/ GU/DESBT</p>	
<p><b>47 Advocate for the Logan Hospital expansion</b></p> <p>Expansion of the hospital to be progressed through collaborative design, active engagement and advocacy between Council, Metro South Health and the State Government. Council will seek to ensure high quality built form, street interfaces and connections into the hospital represent best practice.</p>	Ongoing	Project	<p><b>Lead: ED&amp;CP</b> Support: DA, RIP, CF, AV, Queensland Health, Metro South Health, TAFE/DESBT</p>	

04 RESILIENT				
Actions	Timing	Type	Stakeholders	
<b>48</b> ✓ <b>Create the Meadowbrook Leadership Group</b> The leadership group will consist of key stakeholders to champion Meadowbrook as Logan’s premier destination for healthcare investment and advanced education, and collaboratively progress implementation of prioritised projects and initiatives. The leadership group would comprise of representatives from the Logan Hospital, Griffith University, TAFE Queensland, relevant Queensland Government departments, local landowners and experts from the health and knowledge sectors, as well as representation from Logan City Council.	Complete	Project	<b>Lead: ED&amp;CP</b> Support: AV, CF, SCI, CC, Local businesses, Community, State Government, Metro South Health, GU/TAFE, Health and medical sector	
<b>49</b> ✓ <b>Generate new investment through competitive advantage</b> Identify Meadowbrook’s existing and emerging strengths, specialisations and unique competitive advantages through the Meadowbrook leadership group, identifying the precinct’s values as an emerging health and wellbeing precinct.	Short term	Project	<b>Lead: ED&amp;CP</b> Support: Leadership Group	
<b>50</b> ✓ <b>Develop a targeted investment strategy</b> Attract a greater variety of retail, dining, healthcare, research and development, and educational institutions in the centre, with the aim of advancing the health and wellbeing vision, as well as increasing activation and attractiveness of the centre for extended hours.	Ongoing	Policy	<b>Lead: ED&amp;CP</b> Support: CF, CS&I, CC, Metro South Health, GU, TAFE, State Government	

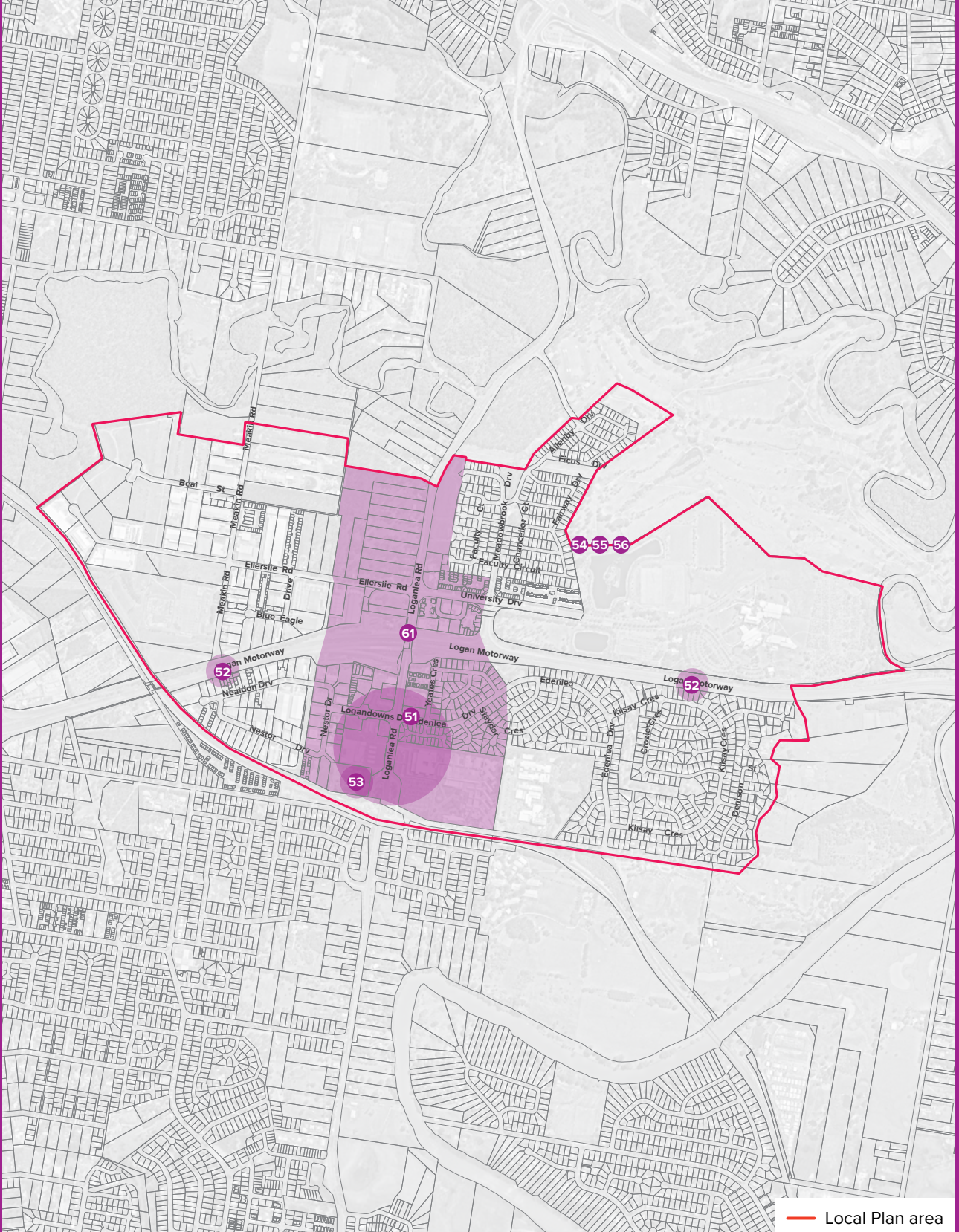
✓ Summit Outcome







# 05 Distinctive



05 DISTINCTIVE				
Actions	Timing	Type	Stakeholders	
<b>51</b> <b>Develop a Street Art Activation Project</b> ✓ The project has the aim to transform key public open spaces, walls, pillars and bridge structures in Meadowbrook through innovative, contemporary and imaginative street art to create a sense-of-place, increase activation and lower vehicle speeds. Specific consideration is to be given to the link between art and health, knowledge and wellbeing. Collaboration with key institutions and local students is to be prioritised.	Ongoing	Project	<b>Lead: ED&amp;CP</b> Support: LCI, SCI&AC, CS&I, CC, SCI, Local business, Community, Metro South Health, TAFE/GU, State Government	
<b>52</b> <b>New wayfinding signage</b> Wayfinding signage to emphasise Meadowbrook as Logan's health, knowledge and wellbeing destination.	Medium term	Project	<b>Lead: ED&amp;CP</b> Support: RIP, RID, CC, Parks, Transurban, DTMR	
<b>53</b> <b>Facilitate catalyst gateway/landmark buildings</b> Work with land owners to facilitate the development of landmark buildings at the corner of Ellerslie Road and Loganlea Road, the corner of Logandowns Drive and Loganlea Road, and in the vicinity of Riverina stock feed site.           ✓	Ongoing	Project	<b>Lead: ED&amp;CP</b> Support: RIP, DA, AV, Community and business groups, Queensland Health, Metro South Health	
<b>54</b> <b>Develop a Health and Wellbeing Precinct identity, place branding and marketing strategy</b> The strategy will leverage Meadowbrook's unique strengths and competitive advantages into the future. This strategy would be an engagement platform to seek new investment from the healthcare sector, promote the area as a destination for academic research and applied research and development.	Complete	Project	<b>Lead: ED&amp;CP</b> Support: CF, CS&I, CC, SCI, Metro South Health, GU, TAFE, State Government	
<b>55</b> <b>Identify, promote and advocate for a suite of incentives, grants and subsidies</b> Incentives, grants and subsidies will be aimed at new health, research and education investment in collaboration with Meadowbrook leadership group at the institutional, state and federal government levels.	Short term	Program	<b>Lead: ED&amp;CP</b> Support: AV, CS&I, CF, Leadership Group	
<b>56</b> <b>Develop a Health and Medical Investment Business Case</b> ✓ Assist in the identification of need, gap analysis of services and targeted investment opportunities in the health and medical sectors across the City of Logan, inclusive of identifying opportunities for Meadowbrook.	Complete	Project	<b>Lead: ED&amp;CP</b> Support: CF, CC, AD, Development sector	

**05 DISTINCTIVE**

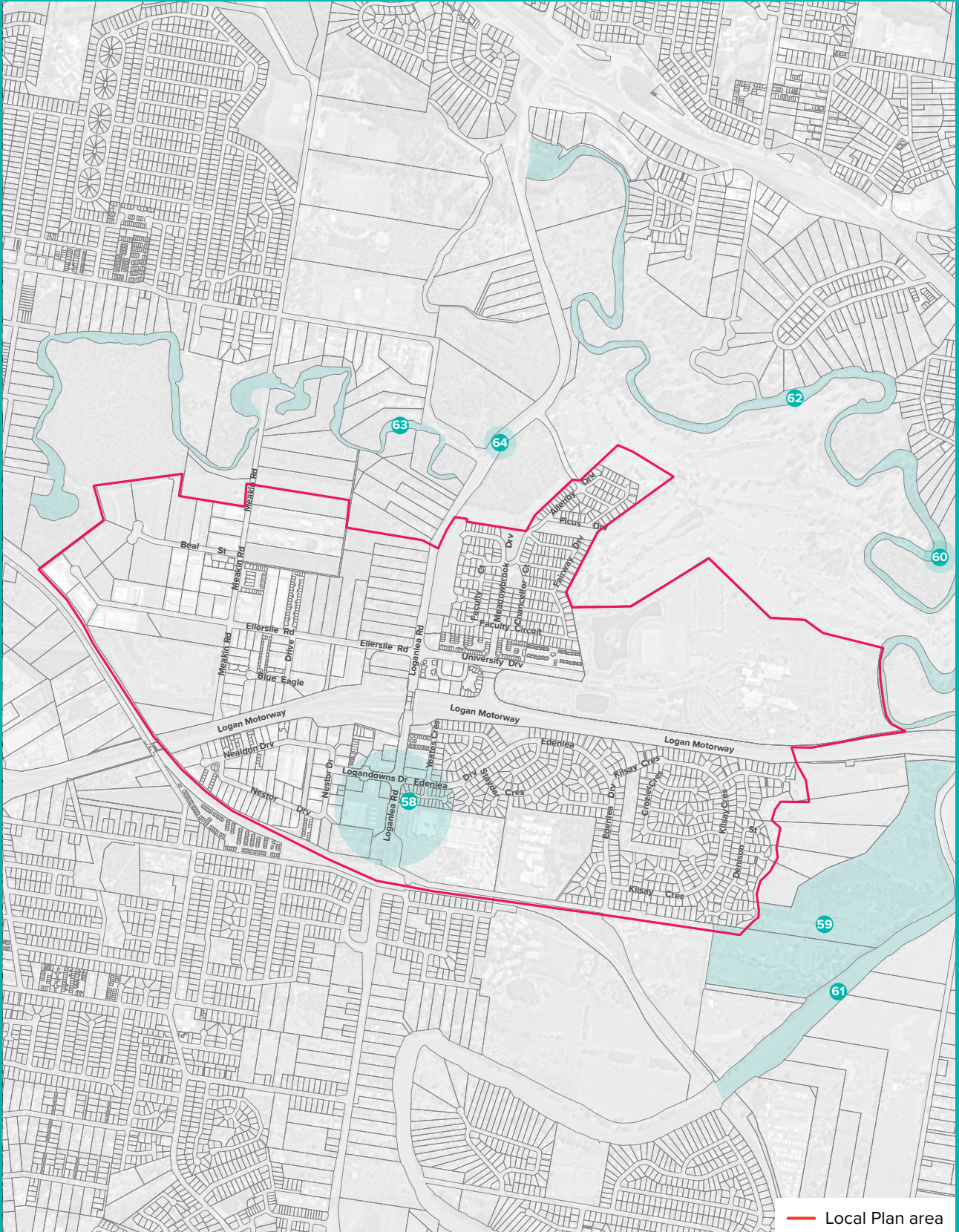
Actions	Timing	Type	Stakeholders
<p><b>57</b> ✓ <b>Provide development incentives for early delivery of catalyst projects</b></p> <p>Increase development potential of new land uses which are consistent with Meadowbrook as a health and wellbeing precinct by creating a special Meadowbrook Economic Development Zone. This will be advanced by exploring the reduction of Council's fees and infrastructure charges for a range of healthcare, education and research themed land uses in targeted locations.</p>	Short term	Program	<p><b>Lead: ED&amp;CP</b></p> <p>Support: CC, SCI, Community</p>
<p>✓ Summit Outcome</p>			







# 06 Embracing nature



## 06 EMBRACING NATURE

Actions	Timing	Type	Stakeholders
<p><b>58</b> <b>Develop a landscape strategy to green Meadowbrook's centre</b></p> <p>✓ The strategy will guide the staging and delivery of new trees and vegetation in key locations along streets in the centre, unused areas of road and public open space, and around key sites, such as the Logan Hospital, Loganlea Train Station and local shopping centres. The landscape strategy will be used to guide staged 'greening' of key streets and locations by both the public sector (through projects and grants) and the private sector (through site development).</p>	Medium term	Project	<p><b>Lead: ED&amp;CP</b></p> <p>Support: RIP, RID, M&amp;E, CS&amp;I, SCI, LCI, Parks, WI, Local business, Local landowners, Community, Metro South Health</p>
<p><b>59</b> <b>Enhance recreation facilities at Riverdale Park</b></p> <p>✓ Renew and upgrade Riverdale Park as one of the primary recreational focuses of the centre. Upgrades should be inclusive of continually improving the park's unique recreational offer, improving car parking access and improving fishing, local boat and watercraft access to Logan River.</p>	Medium term	Project	<p><b>Lead: Parks</b> Support: SCI, CS&amp;I, ED&amp;CP, M&amp;E, CC, HEW, Community</p>
<p><b>60</b> <b>Enhance Murray's Environmental Reserve</b></p> <p>Enhance the protection of endangered vegetation, improved recreation facilities, walking and cycle access, and environmental management.</p>	Short to medium term	Project	<p><b>Lead: Parks</b> Support: HEW, ED&amp;CP, M&amp;E, CC, Community</p>
<p><b>61</b> <b>Enhance ecological values of Logan River</b></p> <p>Enhance environmental corridors, water quality objectives, rehabilitation of open spaces and improving community access to environmental assets.</p>	Medium term	Project	<p><b>Lead: HEW</b></p> <p>Support: SCI, Parks, M&amp;E, ED&amp;CP, Local residents, Community</p>
<p><b>62</b> <b>Enhance ecological values of Slacks Creek</b></p> <p>Enhance environmental corridors, water quality objectives, rehabilitation of open spaces and improving community access to environmental assets.</p>	Medium term	Project	<p><b>Lead: HEW</b></p> <p>Support: SCI, Parks, M&amp;E, ED&amp;CP, Local residents, Community</p>
<p><b>63</b> <b>Enhance ecological values of Scrubby Creek</b></p> <p>The project should enhance environmental corridors, water quality objectives, rehabilitation of open spaces and improving community access to environmental assets.</p>	Medium term	Project	<p><b>Lead: HEW</b></p> <p>Support: SCI, Parks, M&amp;E, ED&amp;CP, Local residents, Community</p>
<p><b>64</b> <b>Provide new landscape entry statements and landscape thresholds</b></p> <p>The project will enhance Meadowbrook's identity as a place with significant open space and natural assets. The landscape entry statements will be located where the open space network intersects with key pieces of regional infrastructure.</p>	Medium term	Project	<p><b>Lead: M&amp;E</b></p> <p>Support: Parks, RIP, ED&amp;CP, CC, Community</p>

✓ Summit Outcome



 CITY OF **LOGAN** | **MEADOWBROOK**

 [logan.qld.gov.au](http://logan.qld.gov.au)