



Logan Central Implementation Plan

POLICIES, PROGRAMS AND PROJECTS



LOGAN CENTRAL



List of Abbreviations

LOGAN CITY COUNCIL BRANCHES

AV	Advocacy Program – Office of the CEO
CC	Corporate Communications Branch
CS&I	Customer Service and Information Branch
CS&L	Community Safety and Liveability Branch
DA	Development Assessment Branch
ED&CP	Economic Development and City Planning Branch
ELT	Council’s Executive Leadership Team
HEW	Health, Environment and Waste Branch
LCI	Libraries and Creative Industries Branch
Parks	Parks Branch
RCM	Roads Construction Maintenance Branch
RID	Road Infrastructure Delivery Branch
RIP	Road Infrastructure Planning Branch
SCI	Sports and Community Infrastructure Branch
VE	Venues and Events Branch
LW	Logan Water

OTHER STAKEHOLDERS

DoE	Department of Education
DTMR	Department of Transport and Main Roads
LEC	Logan Entertainment Centre
PCYC	Police Citizens Youth Club
QPS	Queensland Police Service
QR	Queensland Rail

OTHER ABBREVIATIONS

CPTED	Crime Prevention Through Environmental Design
LCCCP	Logan Central Community and Civic Precinct



Acknowledgement of Country

Logan City Council acknowledges the Traditional Custodians of the land, water, and country we now call the City of Logan. We pay our respect to Elders past, present and emerging and extend that respect to all Aboriginal and Torres Strait Islander peoples across the city.

CONTENTS

Introduction 4

Logan Central Priority Projects Completed 8

Logan Central Priority Projects 2022–2024. 11

Priority Policies, Programs and Projects 12

01 People focused 18

02 Responsive 22

03 Connected 26

04 Resilient 30

05 Distinctive 34

06 Embracing nature. 36

INTRODUCTION

The purpose of the Logan Central Implementation Plan is to progress the aims and objectives of the Logan Central Master Plan from 'visioning' to 'doing' through the process as set out in Figure 1.

The Implementation Plan does this by identifying and prioritising potential capital and non-capital projects and programs to deliver the actions required to progress the aims and objectives of a master plan. Depending on the type of place-based actions, these may be delivered by Council, the Queensland Government, the Federal Government, the private sector, or the community. The process of identification and prioritisation of place-based actions is the result of ongoing engagement with stakeholders, ensuring prioritised actions represent the current and future needs of the community, government, industry, business, and landowners.

These aspirational place-based actions will assist planning and coordination across Council to deliver the actions required to progress the vision of the Logan Central Master Plan. This approach allows Council to commit to a framework to deliver the vision of the master plan over the short term (up to 5 years), medium term (5 to 10 years) and long term (more than 10 years), whilst allowing a more flexible approach in the delivery of priority place-based actions.

Following the Logan Central Summit several key initiatives and actions were endorsed by Council which informed the Logan Central Implementation Plan. The Implementation Plan has been updated to reflect projects delivered since 2019 and updates to the place-based actions for the next 5 year period (2024–2029). New actions have been added where relevant identifying new place making priorities as the city's dynamic centres continue to progress.

Place based actions have been recategorised by applying the overarching principles of Logan's Urban Design Framework (UDF), endorsed by Council (Figure 2). The vision of the UDF is "*High quality Urban Design in Logan will drive positive place-based outcomes and is a foundation for all future investment decisions*" and therefore provides the appropriate lens to consider the key place-based actions for the Implementation Plan. When the 6 principles are holistically considered they provide the foundation to create a high-quality built environment that matches the aspirations of its residents.

The place-based actions recommended for implementation are set out in more detail in this document. The Place Making and Urban Design Program (Economic Development and City Planning Branch) will lead the collaboration across Council, community, and business stakeholders to deliver key place-based actions for the centre. Where identified, the internal branch/es recommended to ideally lead the project are identified. The place-based actions are expected to be updated regularly and do not represent a commitment by Council or other stakeholders for funding or delivery. Place based actions can be considered for funding, applications for government grants and partnerships with a range of stakeholders that lead to the eventual delivery of the policy, program or project. The Division 2 Councillor will be consulted on all place-based actions.



Figure 1 – ‘Visioning’ to ‘Doing’

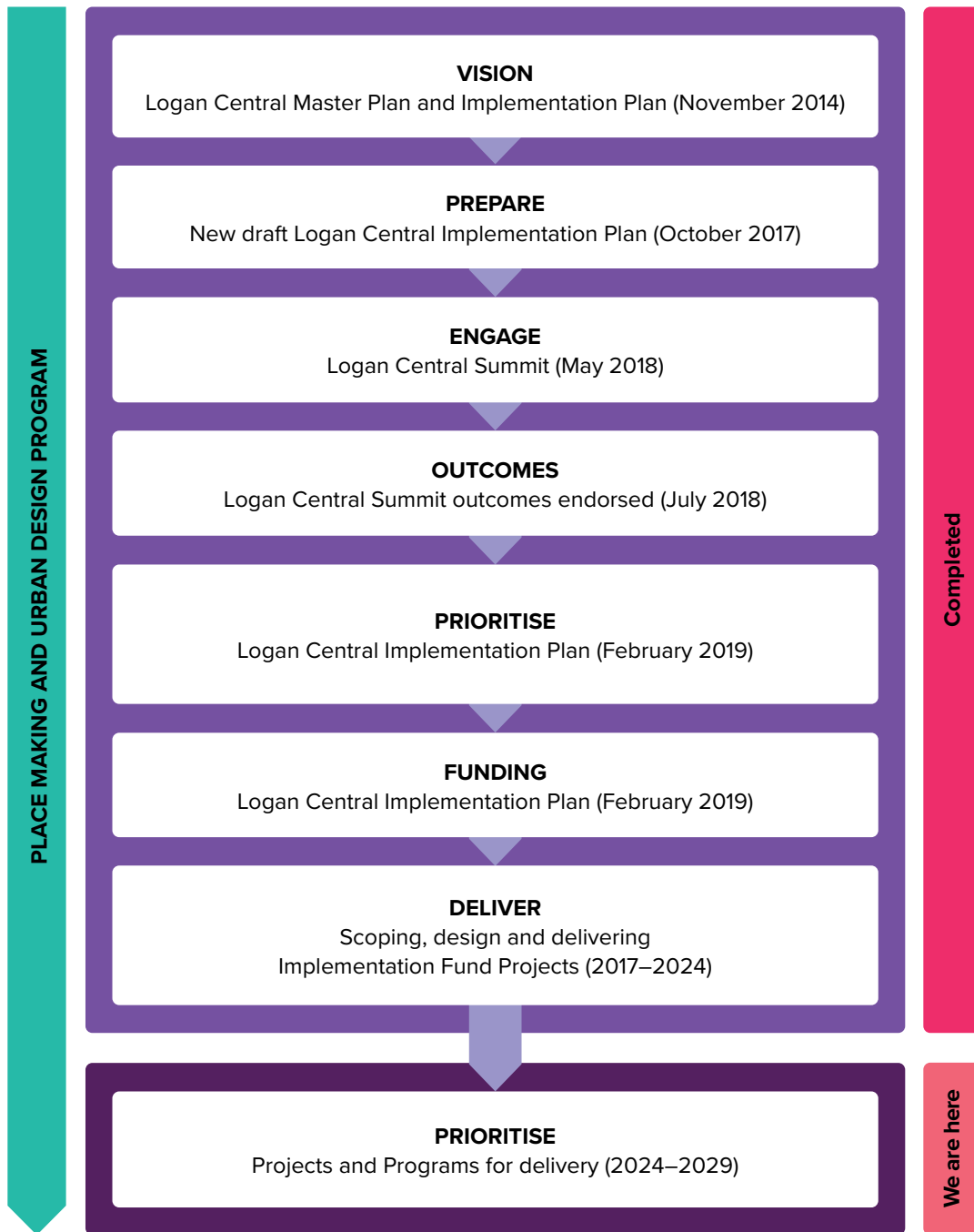
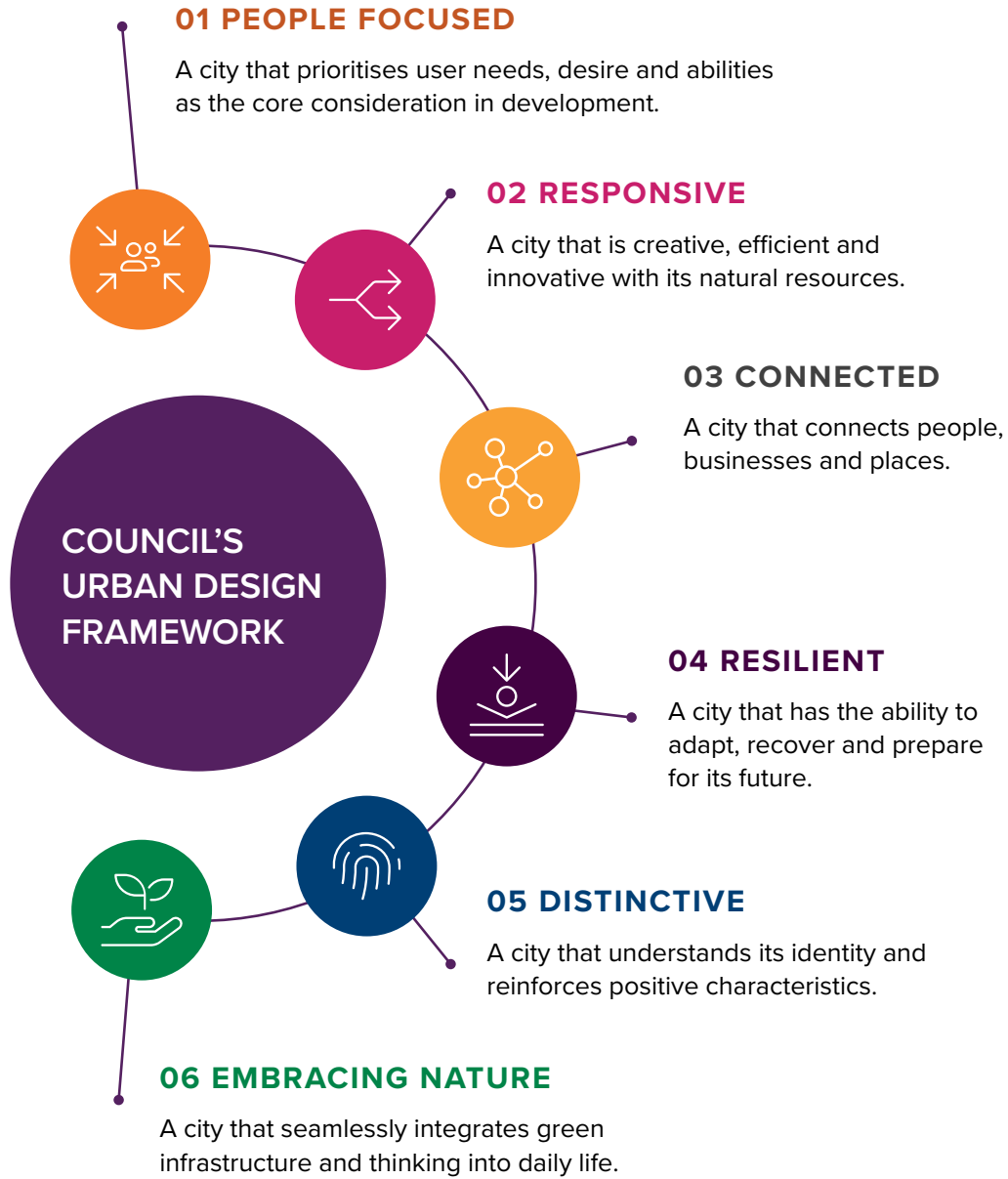


Figure 2 – Urban Design Framework





Logan City Council Administration Centre and Woodridge State School

LOGAN CENTRAL PRIORITY PROJECTS COMPLETED

The Civic and Community Precinct Plan

The Civic and Community Precinct Plan was completed and endorsed by Council in June 2021. The plan is a key urban design instrument providing strategic 'real' directions guiding the Precinct on how to stitch together 41 hectares of parkland, civic administration, public services, sporting, and entertainment venues into a cohesive, community engaging, safe, and economically active destination.

The plan aims to maximise Council's impact in a precinct and provide an integrated long-term vision to deliver a safe and healthy community, that will contribute to development of a strong local economy through investment attraction over the next 10 to 30 years.

In 2021 the project was awarded both the State and National Urban Design Award winner by the Australian Institute of Landscape Architecture (AILA).

Croydon Road Precinct Streetscape Master Plan

A Streetscape Master Plan for key streets in the Croydon Road Precinct including Croydon Road, Station Road, Railway Parade, Blackwood Road, North Road and proposed new laneways was finalised.

The master plan considers footpath and carparking provision, pavement and landscape finishes, lighting and CCTV, public art, and street art. The master plan will inform a pipeline of streetscape enhancement projects that can be delivered in the precinct and upgrades to Croydon Road will form part of the first upgrades to be delivered.

Deliver water play/water park

The Logan Gardens water play project with the Parks Branch as the project lead, was officially opened in December 2020.

Incentivise upgrades to building facade

The Facade Improvement Program encourages owners and tenants to enhance their facade/shop front and help improve street appeal. Four successful applications were awarded as part of Stage 1 of the Façade Improvement program. Additional applications will be invited as part of Stage 2 of the program.

Place branding/marketing strategy

A strategic branding, marketing and media strategy has been developed to define and strengthen community and place identity of Logan Central into the future and will guide cohesive stakeholder engagement.





Top image:
Artists impression of
Croydon Road Precinct
streetscape upgrades



Left image:
Drone footage
of Logan Gardens



Image: Logan Gardens Shared Parkway proposal render

LOGAN CENTRAL PRIORITY PROJECTS 2022–2024

The Logan Gardens Shared Parkway

Design and deliver a shared pathway to unlock opportunities throughout the wider gardens. The pathway will prioritise pedestrian, cyclist, scooters with controlled access for slow speed vehicles, provision of additional parking and improved equitable access into the Gardens. The project will provide significantly improved access throughout Logan Gardens and unlock the full recreational potential of this valuable park asset.

Croydon Road Streetscape Upgrade Stage 1

Design and deliver capital work upgrades to Croydon Road Precinct. A series of urban interventions will inform detail design for streetscape enhancements towards creating a precinct that will strengthen the community identity, provide opportunities for business to prosper and is a safe place where people can live, work and play.

Logan Central Activation Strategy

Prepare and deliver an Activation Strategy that includes the delivery of a signature event to activate the Civic and Community Precinct and/or the Croydon Road Precinct. The activation event will be designed to support and promote the local community and business in Logan Central.

Develop a digital connection strategy and deliver free public Wi-Fi for key public spaces

Deliver free Wi-Fi to key public spaces such as the Logan Gardens and investigate smart city and digital initiatives for early implementation that align with current priority funded projects.

Charles Avenue/Croydon Road Shared Pathway

Detailed design of a shared pathway and bike lanes along Charles Avenue and Croydon Road in Logan Central. The design will incorporate lighting, wayfinding and tactile pavement including the provision of a braille trail and review of QR end-of-trip facilities. Importantly, improvement to upgrade the existing Woodridge station underpass is a critical project outcome that will address the rail corridor as a barrier to the connectivity throughout Logan Central.



PRIORITY POLICIES, PROGRAMS AND PROJECTS



Artists impression of the Logan Central Civic and Community Precinct

	Actions	Timing	Summit Outcome	Type	
01 PEOPLE FOCUSED	1	Investigate delivery of district level community centre	Complete		Project
	2	Deliver an integrated community and youth centre	In progress		Project
	3	Relocate/re-purpose of the Logan Central PCYC	On going		Project
	4	A new bus station at Woodridge Train Station	Medium term	✓	Project
	5	Investigate feasibility for a consolidated social and health services hub	Medium term	✓	Project
	6	Deliver a Logan Central place specific engagement event	Complete		Program
	7	Establish a coffee shop in the Logan Gardens	In progress	✓	Project
	8	Identify a suitable space Identify a suitable space for delivery of a civic park/town square	Short term		Project
	9	Design and deliver a civic park as entrance for the Civic and Community precinct	Medium term		Project
	10	Design and deliver the Logan Entertainment Centre (LEC) Civic Plaza	Short term		Project
	11	Investigate opportunities to expand the LEC	Medium term	✓	Project
	12	Investigate and plan the expansion and redevelopment of Logan Brothers	Medium term	✓	Project
	13	Investigate the relocation of the Logan Art Gallery	Long term		Project
	14	Deliver a Place Activation and Events Strategy	In progress	✓	Program
	15	Review Council process and charges for public spaces	Short term	✓	Policy
	16	Expand the Global Food Markets	Short term	✓	Project
02 RESPONSIVE	17	Expand the safety camera network	Short term	✓	Project
	18	Develop a Safer City Strategy for Logan Central	Short term	✓	Policy
	19	Advocate for replacement of the Station Road public toilet facility	Short term	✓	Project
	20	Partner with housing providers and the development industry	Ongoing	✓	Program
	21	Advocate for major refurbishment of Woodridge Train Station	Ongoing	✓	Project
	22	Prepare a strategy to incentivise upgrade of buildings in the centre – Façade Improvement Program	Complete	✓	Program
	23	Establish a new education precinct	Long term	✓	Project
	24	Promote outdoor dining and new restaurants or cafes	Short term	✓	Policy
	25	Create the Logan Central Economic Development Zone (LCEDZ)	Short term	✓	Policy
	26	Update the Local Plan planning scheme provisions	Ongoing		Policy

Actions		Timing	Summit Outcome	Type	
03 CONNECTED	27	Design and deliver the Wembley Road Urban Boulevard	Medium to long term	✓	Project
	28	Upgrade pedestrian connection between Railway Parade and Ewing Road across Wembley Road	Medium term	✓	Project
	29	Improve pedestrian and cycle links	Short term	✓	Project
	30	Deliver a new Cycle Centre	Medium term	✓	Project
	31	Prepare a functional plan for Wembley Road North	Medium term	✓	Project
	32	Advocate for improved infrastructure connection between Jacaranda Avenue to Woodridge Train Station	Medium term	✓	Project
	33	Design and deliver a pedestrian and cycle link with Kingston Butter Factory (KBF)	Short term	✓	Project
	34	Advocate for a pedestrian and cycle connection across the Brisbane to Gold Coast Rail corridor	Medium term	✓	Project
	35	Undertake traffic modelling to inform road and intersection upgrades	Short term	✓	Project
	36	Design and deliver a new Shared Street linking Charles Avenue and Wembley Road	Long term	✓	Project
	37	Design and deliver the Logan Gardens Shared Parkway	Short term	✓	Project
	38	Design and deliver shared pathway promenade (Art Path) through the Civic and Community Precinct	Short to medium term	✓	Project
	39	Design and deliver the re-imagined Democracy Way through the Civic and Community Precinct	Medium term		Project
	40	Design and deliver a new north south road access through the Logan Civic and Community Precinct	Short term		Project
	41	Design and deliver a new street connections in line with precinct plan	Medium term		Project
	42	Design and deliver priority cycle route linkage along Charles Avenue and Croydon Road	Short term		Project
43	Advocate for upgrade of existing underpass between Railway Parade and Croydon Road	In progress	✓		
44	Investigate mid-block laneway connections between Station Road and Blackwood Road	Medium term		Project	

	Actions	Timing	Summit Outcome	Type	
04 RESILIENT	45	Investigate potential for a multipurpose sporting facility	Complete	✓	Project
	46	Deliver a water park and/or water play area in the centre	Complete	✓	Project
	47	Develop a digital connection strategy and deliver free public Wi-Fi for key public spaces	Short term	✓	Project
	48	Parking and Travel Demand Management Study	Medium term	✓	Project
	49	Civic and Community Detailed Precinct Master Plan	Complete	✓	Project
	50	Shopping/Retail Precinct Master Plan	Medium term	✓	Policy
	51	Establish the Croydon Road/Woodridge Trader Network Group	Short term	✓	Program
	52	Redevelopment of O’Gorman Park	Medium term		Project
	53	Facilitate the establishment of a cinema in the centre	Medium term	✓	Project
	54	Undertake a feasibility study for a multi storey car parking station	Medium term		Project
	55	Prepare a strategy to improve employment and training opportunities and support entrepreneur programs	Medium term	✓	Project
	56	Establish a vertical vocation/trade college in the Civic and Community Precinct	Long term		Project
	57	Develop a targeted business and investment strategy	Short term	✓	Policy
05 DISTINCTIVE	58	Deliver key actions from the Urban Art Strategy	Ongoing		Project
	59	Design and deliver entry statements to Logan Central	Medium term	✓	Project
	60	Develop a cultural trail along pathways through the LCCC precinct	Medium term	✓	Program
	61	Design and deliver wayfinding and directional signage in key locations	Short term	✓	Project
	62	Facilitate catalyst gateway/landmark buildings	Ongoing		Project
	63	Undertake a place assessment	Complete		Project
	64	Develop a 3D model for the Logan Central Activity Centre	Complete		Project
	65	Develop a Place Branding and Marketing Strategy	Complete	✓	Project

	Actions	Timing	Summit Outcome	Type
	66 Croydon Road Precinct Streetscape Master Plan	Short term	✓	Project
06 EMBRACING NATURE	67 Develop an overall streetscape design framework	Short term	✓	Project
	68 Enhance and embellish existing parks and recreation spaces	Long term	✓	Project
	69 Enhance and embellish Logan Gardens	Ongoing	✓	Project
	70 Support community garden initiatives	Medium term	✓	Program
	71 Design and deliver streetscape upgrades for Croydon Road and surrounding public spaces	Short term	✓	Project
	72 Deliver enhancements in accordance with the Croydon Road Streetscape Master Plan	Medium term	✓	Project
	73 Prepare a strategy to achieve sustainable development in Logan Central	In progress	✓	Policy

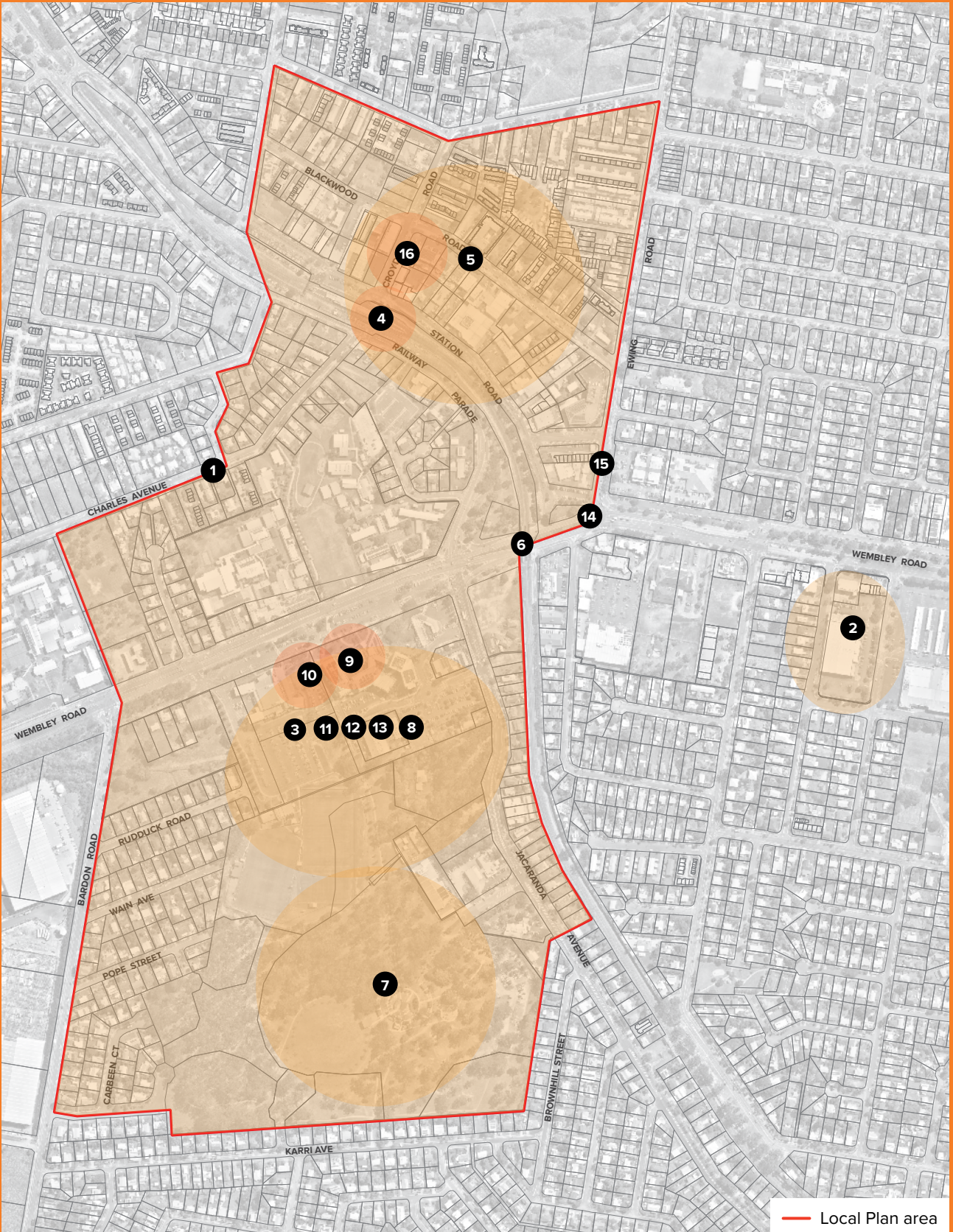




Feli from Douty African Market, Station Road



01 PEOPLE FOCUSED



Note: Some number locations are general only and not intended to indicate specific areas.

01 PEOPLE FOCUSED				
Actions	Timing	Type	Stakeholders	
1 Investigate delivery of a new district-level community centre Investigate potential to co-locate community centre with compatible civic spaces. Centre to provide multipurpose and adaptable floor space for a wide range uses with a focus on youth.	Complete	Project	Lead: SCI Support: ED&CP, SCI, CECE, AV, Community and business groups	
2 Deliver an integrated community and youth centre The centre should offer affordable activities for young people, performance spaces, areas for creative arts expression, and general learning areas available to the community and local schools. Wilbur Street has been identified as the site for this centre.	In progress	Project	Lead: SCI Support: Parks, ED&CP, SCI	
3 Relocate/Repurpose of the Logan Central PCYC Investigate suitable re-purposing for Logan Central PCYC land and/or building to enhance the Civic and Community Precinct. PCYC has been relocated to Cronulla Park.	Short term	Project	Lead: AD Support: ED&CP, LCI, LEC, Parks, SCI Community groups, Arts community	
4 A new bus station at Woodridge Train Station ✓ Advocate for the development of a pre-feasibility analysis for a new bus station in the vicinity of Woodridge Train Station.	Medium term	Project	Lead: DTMR Support: AV, AD, RIP, ED&CP, SCI	
5 Investigate feasibility for a consolidated social and health services hub ✓ Investigate consolidation of services into a central hub to create a place that is easily accessible and agile in providing support services to various communities. The co-location of social and health services will seek to strengthen partnerships and enable ease in networking between support groups and encourage synergies between support programs.	Medium term	Project	Lead: SCI, ED&CP Support: CECE, Community groups, Government agencies	
6 Logan Central place specific engagement event Engage with the community, stakeholders, developers, and investors to catalyse development and investment opportunities in the activity centre.	Complete	Program	Lead: ED&CP Support: CC, Federal and State members, Business, community and development industry	
7 Establish a coffee shop in Logan Gardens ✓ Issue an Expression of Interest for commercial operation to establish a pop-up coffee shop in the Logan Gardens at a location adjacent core activities in the gardens	In progress	Project	Lead: ED&CP Support: Parks, AD	
8 Identify a suitable space for delivery of a civic park/town square Explore the long-term vision to deliver a civic park/town square centrally located in Logan Central. The space will be designed as a gathering space for a variety of events and amenity for office workers and visitors.	Complete	Project	Lead: ED&CP Support: Parks, SCI, LCI	

✓ Summit Outcome

01 PEOPLE FOCUSED				
Actions	Timing	Type	Stakeholders	
<p>9 Design and deliver a civic park as entrance for the Civic and Community Precinct</p> <p>As a gateway to The Civic and Community Precinct, design and deliver a civic park that will provide a distinctive and functional Wembley Road address for the precinct. Create a high amenity urban environment with provision of shade, art, and seating that will be activated by the school, Council functions and local communities as a place to relax, celebrate and congregate. The plaza will provide direct access between the carparks, Wembley Road, the LEC and LCC campus. An enhanced Wembley Road crossing and intersection will unlock safer all direction movement from the LCC carpark and will remove vehicles from key pedestrian movements.</p>	Medium term	Project	<p>Lead: ED&CP Support: CECE, SCI, DA, Parks</p>	
<p>10 Design and deliver the Logan Entertainment Centre (LEC) Civic Plaza</p> <p>Design and deliver a new flexible amphitheatre, spill out performance and outdoor space for LEC visitors and local workers. Create an interactive place for people to meet, gather and perform, that is well connected with the Logan Council Administration Building and the Logan Gardens with provision of shade, seating, soft landscaping, public art, smart lighting, CCTV inclusive of Wi-Fi.</p>	Short term	Project	<p>Lead: ED&CP Support: CC, VE, Parks</p>	
<p>11 Investigate opportunities to expand the Logan Entertainment Centre</p> <p>Investigate the potential to expand the LEC and integrate with a new performing arts centre and/or the Logan Art Gallery to strengthen synergies and develop the art, culture, and entertainment identity of the precinct.</p>	Medium term	Project	<p>Lead: ED&CP, SCI Support: LCI, Parks, VE</p>	
<p>12 Investigate and plan the expansion and redevelopment to Logan Brothers</p> <p>As a new integrated multi-purpose building, the Logan Brothers redevelopment provides opportunities for the establishment of a well-integrated community facility including field reorientation, integrated seating and new multipurpose building/clubhouse and a home for allied sports, gym, and childcare.</p>	Long term	Project	<p>Lead: ED&CP, SSCI Support: Logan Brothers, Parks</p>	
<p>13 Relocate the Logan Art Gallery</p> <p>Investigate the opportunities to co-locate the Art Gallery with the LEC to strengthen synergies between art, culture, and entertainment in the precinct as an opportunity to deliver a gateway building for the precinct. The development of a new architecturally iconic building provides opportunity to activate the heart of the precinct.</p>	Long term	Policy	<p>Lead: SCI, LCI Support: ED&CP</p>	

✓ Summit Outcome

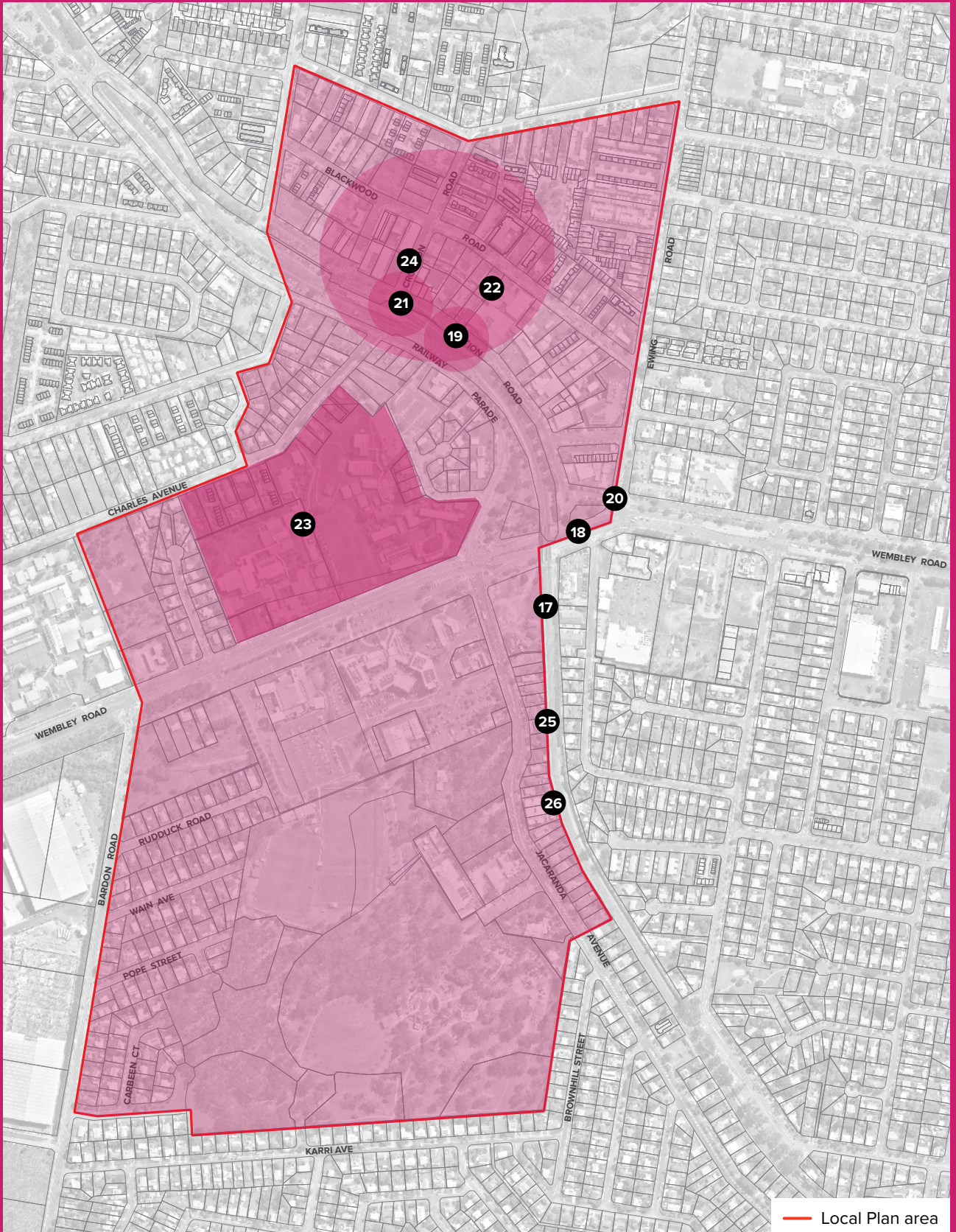
01 PEOPLE FOCUSED			
Actions	Timing	Type	Stakeholders
14 Deliver a Place Activation and Events program ✓ Develop a place activation and events program to promote the identity of Logan Central and attract more frequent events to the centre on a permanent basis. Focus on events that activate key precincts in Logan Central including night-time markets, cultural events, food events, sporting events, pop up initiatives, kid's activities, outdoor cinema events and active park events including free or low-cost group activities.	In progress	Program	Lead: ED&CP Support: CC
15 Review Council process and charges for use of public spaces ✓ Develop a streamlined, cost feasible process for community and not-for-profit to use the public spaces and parks for community-led events and outdoor dining.	Short term	Policy	Lead: ED&CP Support: DA, Community groups, Local business
16 Expand the Global Food Markets ✓ Support the expansion of the Global Food Markets as an anchor the promote community identity and as a business incubator for the people of Logan Central and the City of Logan. Identify spaces in the Croydon Road precinct suitable for market operation that will support growing numbers of vendors and visitors in the short to medium term. Undertake feasibility study to determine demand for a permanent food market in the area.	Short term	Policy	Lead: ED&CP Support: DA, Community groups, Local business

✓ Summit Outcome





02 RESPONSIVE



— Local Plan area

Note: Some number locations are general only and not intended to indicate specific areas.

02 RESPONSIVE				
Actions	Timing	Type	Stakeholders	
<p>17 Expand the safety camera network Installation of CCTV at strategic locations through the Logan Central activity centre such as key nodes, intersections, and pedestrian desire lines.</p>	Ongoing	Project	<p>Lead: SCI Support: Parks, ED&CP, SCI, AV, Community and business groups</p>	
<p>18 Develop a Safer City Strategy for Logan Central Develop a Safer Logan Central Urban Renewal Strategy to revitalise the area through delivery of capital works urban renewal projects that align with Crime Prevention Through Environmental Design (CPTED) and Safer by Design principles to create a place where people feel safe, connected, and able to participate in city life at any time of the day or night.</p>	Short term	Policy	<p>Lead: SCI Support: ED&CP, Parks, Community groups, Landowners, Local business, QPS</p>	
<p>19 Advocate for replacement of the Station Road public toilet facility Advocate for delivery of a new Station Road public toilet facility that is safe, accessible and align with CPTED principles to minimise criminal and anti-social behaviour in the Croydon Road precinct. A new facility will strengthen social cohesion, improve safety for people using the facility and accessing the long-term car park, and improve visitor's perceptions of safety in Logan Central.</p>	Short term	Project	<p>Lead: ED&CP Support: ED&CP, SCI, Parks, DTMR, Community groups, Landowners, Local business, QPS</p>	
<p>20 Partner with housing providers and the development industry Partner to facilitate affordable housing options and early delivery of innovative, affordable, and sustainable residential accommodation and housing options in Logan Central.</p>	Ongoing	Program	<p>Lead: DA Support: ED&CP, SCI, DA, HEW State Government, investLogan, Developers, Housing providers</p>	
<p>21 Advocate for major refurbishment of Woodridge Train Station Advocate for improvement to the train station that will contribute towards creating a safe and vibrant Croydon Road precinct. The train station is centrally located in this precinct and the provision of safe, accessible infrastructure is fundamental in achieving positive development outcomes and will support advancement of a key connection across the rail corridor. The precinct is well used by the community, businesses, and a mix of government agencies, as well as being home to local markets that attract visitors into the area.</p>	Ongoing	Project	<p>Lead: ED&CP Support: DS, Parks, RIP, SCI, AV, Government, QR, Local business</p>	

✓ Summit Outcome

02 RESPONSIVE				
Actions	Timing	Type	Stakeholders	
<p>22 Prepare a strategy to incentivise upgrade of buildings in the centre – Façade Improvement Program</p> <p>Collaborate with local business owners and tenants to develop a strategy and identify incentives for land owners to invest in upgrades to shop fronts, building façades and/or contribute towards the streetscape improvements in key precincts to deliver positive community and economic value and strengthen overall community identity, character of place and create streets where people would like to stay and play and spend.</p>	Complete	Program	<p>Lead: ED&CP Support: DA, Landowners, Chamber of Commerce</p>	
<p>23 Establish a new education precinct</p> <p>Explore potential for a state-of-the-art education precinct that includes co-located, compatible education functions such as childcare; provides shared use of community facilities and general learning opportunities for the broader community. Work with the Department of Education to assess feasibility to relocate the Logan City Special School and Woodridge State Primary into the new education precinct.</p>	Long term	Project	<p>Lead: ED&CP Support: CC, RID, LCI, HEW, DETE, DoE Community groups</p>	
<p>24 Promote outdoor dining and new restaurants or cafes</p> <p>Work with local business and community to review existing policy and develop a strategy that will incentivise outdoor dining, new restaurants, and cafes to stimulate a night-time economy, activate the centre and support the formation of a food and entertainment precinct within Logan Central.</p>	Short term	Policy	<p>Lead: ED&CP Support: DA, Existing and future landowners and businesses</p>	
<p>25 Create the Logan Central Economic Development Zone (LCEDZ)</p> <p>Implement deferral of infrastructure charges around the Croydon Road, Centre Core and Civic and Community Precinct that will contribute significant economic, aesthetic and community benefit.</p>	Short term	Policy	<p>Lead: ED&CP Support: DA</p>	
<p>26 Update the Local Plan planning scheme provisions</p> <p>Review the Logan Planning Scheme Provisions to include key recommendations from the Civic and Community Precinct Plan, Croydon Road Streetscape Master Plan and impact of the Logan to Gold Coast Faster Rail project.</p>	Ongoing	Policy	<p>Lead: ED&CP Support: DA</p>	

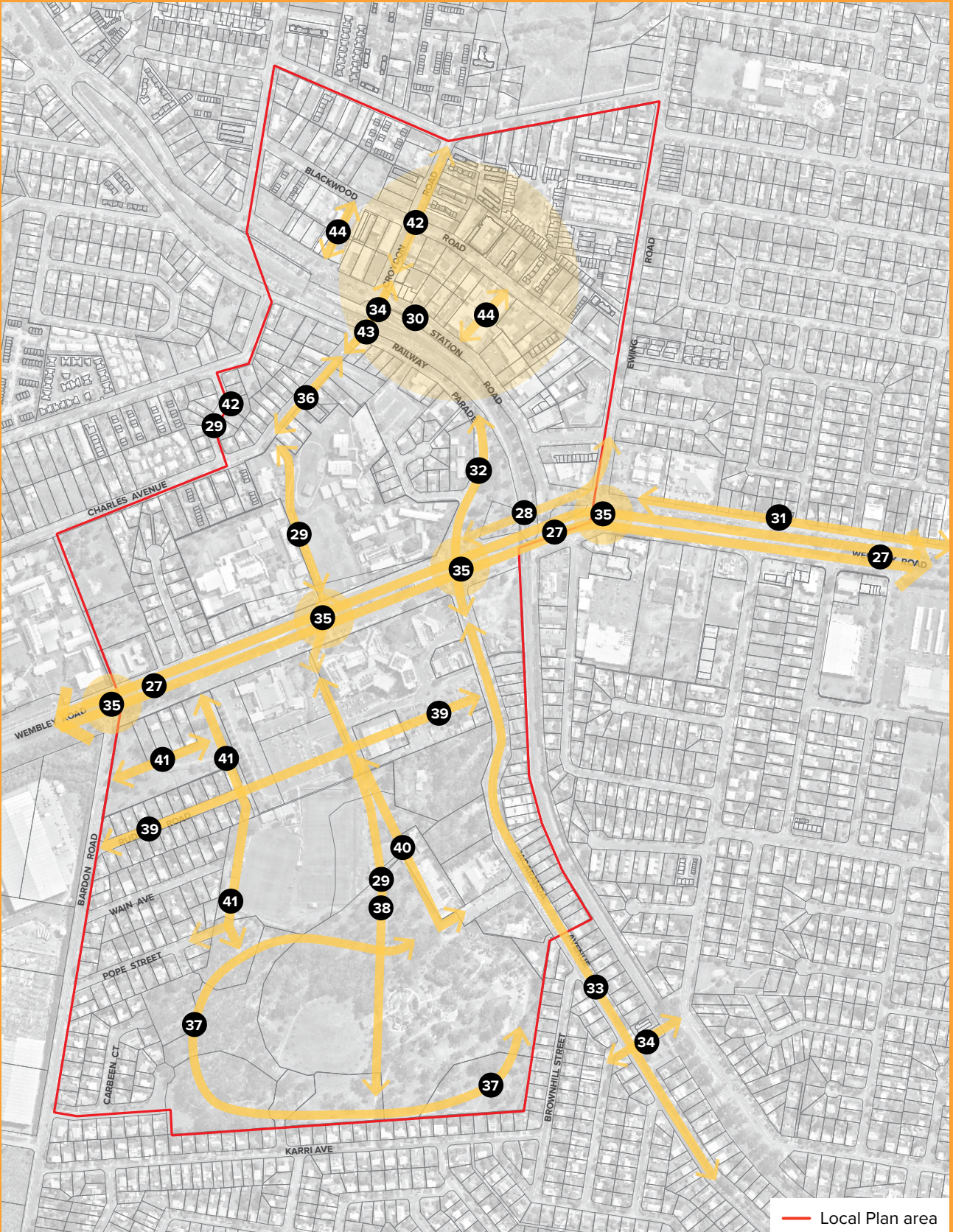
✓ Summit Outcome



Logan Gardens



03 CONNECTED



Note: Some number locations are general only and not intended to indicate specific areas.

03 CONNECTED				
Actions	Timing	Type	Stakeholders	
27 ✓ Design and deliver the Wembley Road Urban Boulevard Design and deliver staged streetscape upgrades between Lennox Court and Railway Parade, and Ewing Road and Kingston Road. Improve function and amenity for pedestrians and cyclists along Wembley Road and advance connections as part of the SEQ principal cycle network.	Medium term	Project	Lead: ED&CP Support: Parks, RIP, RID, LW, ED&CP, AV, LCI, SCI, CC, DTMR, Translink	
28 ✓ Upgrade pedestrian connection between Railway Parade and Ewing Road across Wembley Road Design and deliver streetscape upgrades to improve pedestrian and cyclist environment at the traffic intersection.	Medium term	Project	Lead: RID Support: ED&CP, Parks, RIP, RID, LCI, SCI, DTMR, QPS	
29 ✓ Improve pedestrian and cycle links Upgrade the pedestrian and cycle network to provide safe and easy connection between Logan Gardens, Woodridge Train Station and the Croydon Road Precinct.	Ongoing	Project	Lead: RID Support: Parks, RIP, ED&CP, RID, LW, DTMR	
30 ✓ Deliver a new Cycle Centre Investigate opportunities for a new Cycle Centre inclusive of bike sharing facilities to encourage active transport and activate Railway Parade and the Woodridge Train Station.	Medium term	Project	Lead: ED&CP, RIP Support: RID, LW, TransLink, DTMR	
31 ✓ Prepare a functional plan for Wembley Road North Improve the pedestrian and cycle network to provide safe and easy connection along Wembley Road North. Investigate mix of uses to maximise potential public amenity opportunities to the service road whilst maintaining functionality for vehicles.	Medium term	Project	Lead: ED&CP, RIP Support: SCI, DTMR	
32 ✓ Advocate for improved infrastructure connection between Jacaranda Avenue to Woodridge Train Station Improve pedestrian and cycle safety at key Wembley Road intersections to promote major cycle and pedestrian network connections between Woodridge train station, across Wembley Road and into Jacaranda Avenue.	Medium term	Project	Lead: ED&CP Support: Parks, RIP, RID, LW	
33 ✓ Design and deliver a pedestrian and cycle link with Kingston Butter Factory (KBF) Upgrade the pedestrian and cycle network connecting people between Logan Gardens and the KBF/Gould Adams Park including provision of wayfinding and shade trees.	Medium term	Project	Lead: RID Support: Parks, RIP, ED&CP, RID, LW, AV, HEW	
34 ✓ Advocate for and deliver pedestrian and cycle connections across the Brisbane to Gold Coast Rail corridor Promote Logan Central as a walkable activity centre. Deliver infrastructure to facilitate improved connectivity across the railway corridor to support advancement of major cycle and pedestrian networks from Croydon Road across the rail corridor at Woodridge Train Station into Charles Avenue.	Medium term	Project	Lead: ED&CP, RIP Support: LW, SCI, DTMR, QR	

✓ Summit Outcome

03 CONNECTED				
Actions	Timing	Type	Stakeholders	
<p>35 ✓ Undertake traffic modelling to inform road and intersection upgrades</p> <p>Identify intersection upgrades; shared pedestrian and vehicle zones and identify extent and sequence of upgrades to the road network.</p>	Medium term	Project	<p>Lead: ED&CP Support: RID, LW, RIP Translink, DTMR</p>	
<p>36 ✓ Design and deliver new Shared Street linking Charles Avenue and Wembley Road</p> <p>Deliver a new shared street from Wembley Road through to Charles Avenue unlocking the school sites for mixed use development over the long term. Establish a signalised T-intersection at Wembley Road to service the new main street connection.</p>	Medium term	Project	<p>Lead: RID Support: RIP, ED&CP, Parks, LW, DTMR, DoE, DA</p>	
<p>37 ✓ Design and deliver the Logan Gardens Shared Parkway as a shared space</p> <p>Design and deliver a shared pathway to unlock opportunities throughout the wider parklands. The pathway will prioritise pedestrian, cyclist, scooters with controlled access for slow speed vehicles, provision of additional parking and improved equitable access into the Gardens.</p>	In Progress	Project	<p>Lead: ED&CP Support: Parks, HEW, RIP</p>	
<p>38 ✓ Design and deliver shared pathway promenade (Art Path) through the Civic and Community Precinct</p> <p>Design and deliver a new infrastructure connection designed to celebrate and display various art features and lighting as an attraction and activation of the precinct and gardens. The promenade will provide a strong link between Logan Gardens to Wembley Road Shared Pathway and connect various uses within the Civic and Community precinct including the water park, LEC, Civic Plaza, open space, recreation.</p>	Medium term	Project	<p>Lead: ED&CP Support: Parks, RIP, RID, LW, DTMR, LCI, HEW</p>	
<p>39 Design and deliver the re-imagined Democracy Way through the Civic and Community Precinct</p> <p>A new civic main street in the Civic and Community Precinct connecting east west between Jacaranda Ave and Bardon Road. Centralising the energy in the precinct by provision of a people prioritised main street that stitches together recreational, cultural, sporting, commerce, and services in the civic end of the precinct.</p>	Medium term	Project	<p>Lead: ED&CP Support: Parks, RIP, RID, SCI, LW, DTMR, TransLink</p>	
<p>40 Design and deliver a new north south road access through the LCCCP</p> <p>A north south street with strong green and people presence that connects the re-imagined Democracy Way to Civic Parade to improve safety, accessibility, and useability of Logan Gardens. Connection catalytic in formation of development parcels with addresses inward facing to the precinct and the gardens.</p>	Short term	Project	<p>Lead: ED&CP, RID Support: Parks, RIP, SCI, LW, HEW, DTMR, QPS</p>	

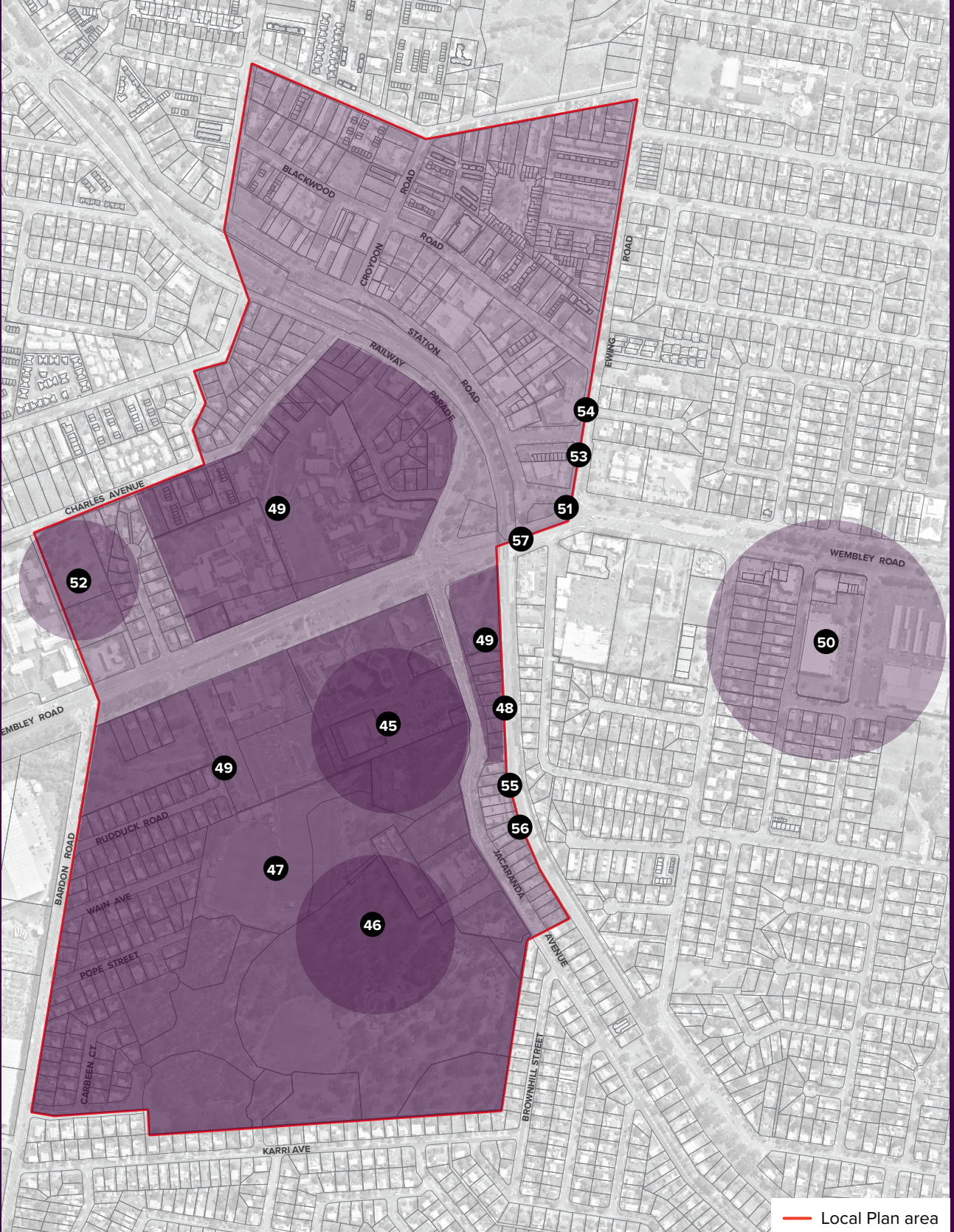
✓ Summit Outcome

03 CONNECTED				
Actions	Timing	Type	Stakeholders	
<p>41 Design and Deliver new street connections in line with the LCCCP</p> <p>In line with the LCCCP design and deliver new street connections with the provision of additional on street car parking to de-consolidate car parking through the precinct. Key connection to consider linking Wembley Road to Democracy Way, connecting Pope Street through to the re-imagined Democracy Way, connecting Bardon Road to the precinct, linking Democracy Way and Parkway and improving connections to Jacaranda Avenue.</p>	Medium term	Project	<p>Lead: ED&CP, RIP Support: AD, Parks, SCI, RID, HEW, LW, DTMR, TransLink, QPS, Private</p>	
<p>42 Design and deliver priority cycle route linkage along Charles Avenue and Croydon Road</p> <p>Kerb realignment and path widening for off-road shared path along Charles Avenue and reconfiguration of Croydon Road to accommodate on-road shared cycle and pedestrian connection. Design to incorporate provision of braille trail installations that connect Logan City Special School with the Woodridge train station. This project links in with item for improvement to existing underpass.</p>	In Progress	Project	<p>Lead: ED&CP Support: DS, Parks, RIP, SCI, HEW, AV, Government, QR, Local business</p>	
<p>43 Advocate for upgrade of existing underpass between Railway Parade and Croydon Road</p> <p>Advocate for upgrade of the existing underpass to improve safety and connectivity for pedestrian and cyclists. Underpass is a key cycle route in TMR priority cycle network. Investigate feasibility to widen underpass to improve safety and access for cyclists and pedestrians, including local school kids to Croydon Road. Project could include widening of underpass, improved ramp, and stair access, CPTED, lighting, CCTV, Art, and wayfinding signage.</p>	In Progress	Project	<p>Lead: DTMR Support: DS, Parks, RIP, SCI, AV, Government, QR, ED&CP, Local business</p>	
<p>44 Investigate mid-block laneway connections between Station Road and Blackwood Road</p> <p>Investigate potential mid-block laneway connections between Station Road and Blackwood Road to improve permeability and connectivity within the precinct. Laneways can also provide future opportunities for business, arts, and culture.</p>	Short term	Project	<p>Lead: Support: DS, Parks, RIP, AV, Government, QR, Local business</p>	

✓ Summit Outcome



04 RESILIENT



Note: Some number locations are general only and not intended to indicate specific areas.

04 RESILIENT				
Actions	Timing	Type	Stakeholders	
45 ✓ Investigate potential for a multipurpose sporting facility Investigate the feasibility of a multipurpose facility would host learning, cultural and sporting programs and events that are diverse and affordable and provide general learning opportunities available to the community and local schools and can potentially facility training or hosting opportunities for the 2032 Olympics.	Short term	Project	Lead: ED&CP Support: SCI, Parks, AV, SP	
46 ✓ Deliver a water park and/or water play area in the centre Deliver infrastructure to support a water park and/or water play area to be delivered in Logan Gardens. Parks Branch to deliver water park. Suitable location/s for a water park and/or water play areas to be considered as part of the precinct level master plan for the Civic and Community Precinct.	Complete	Project	Lead: Parks Support: ED&CP, SCI	
47 ✓ Develop a digital connection strategy and deliver free public Wi-Fi for key public spaces Deliver free Wi-Fi to key public spaces such as the Logan Gardens and investigate smart city and digital initiatives for early implementation that align with urban renewal projects.	Short term	Program	Lead: ED&CP Support: CF, CC, RID, LW, Department of Communication and Arts, Federal Government	
48 ✓ Parking and Travel Demand Management Study Examine car parking facilities and management, active transport network, public transport, and traffic modelling to identify current and future opportunities that align with development activities and the future vision for Logan Central. Review the location and extent of short-term parking, share car, and share bike stations, feasibility of multi-storey car parking stations and a strategy to encourage higher levels of active and public transport use.	Short term	Project	Lead: ED&CP Support: AD, Parks, RIP, SCI, AV, DTMR, QR	
49 ✓ Civic and Community Detailed Precinct Master Plan Develop a Precinct Master Plan that will enhance lifestyle and amenity opportunities to create a multicultural destination of distinction that offers entertainment, food culture, sporting, and recreational activities. Seamlessly integrate existing facilities including The Art Gallery, Logan Entertainment Centre, and the Logan Brothers Rugby League Club, with new facilities and improve connectivity within the precinct and to other precincts of Logan Central.	Complete	Project	Lead: ED&CP Support: AD, SCI, CC, RID, Parks, Community groups, Local business, Chamber of Commerce, QPS, Arts community, Sports clubs, Queensland Government	
50 ✓ Shopping/Retail Precinct Master Plan Collaborate with landowners of the three large-scale shopping centres located along Wembley Road South in the development of a precinct master plan to consolidate future development of the retail shopping centre precinct.	Medium term	Project	Lead: ED&CP Support: Parks, RID, CF, CC, SCI, Shopping centre owners, Local business, Market operators	

✓ Summit Outcome

04 RESILIENT				
Actions	Timing	Type	Stakeholders	
<p>51 ✓ Establish the Croydon Road/Woodridge Trader Network Group</p> <p>Empower Croydon Road business in the establishment of a Trader Network Group that will assist to define and deliver key implementation actions.</p>	Short term	Project	<p>Lead: ED&CP Support: Community groups, Local business, Chamber of Commerce,</p>	
<p>52 Redevelopment of O’Gorman Park</p> <p>Transfer O’Gorman Park to Council ownership and explore opportunities for catalyst developments such as an affordable housing project; aged care facility; or a high-density residential apartment building.</p>	Medium term	Project	<p>Lead: Parks Support: ED&CP, AD, SCI, DA, Local developers, investLogan</p>	
<p>53 ✓ Facilitate the establishment of a cinema in the centre</p> <p>Identify potential cinema operators and work with landowners to attract a cinema operator to the centre in alignment with the Business, Retail and Investment Attraction Strategy for Logan Central and a precinct level master plan for the existing major shopping centres.</p>	Medium term	Project	<p>Lead: ED&CP Support: CC</p>	
<p>54 Undertake a feasibility study for a multi-storey car parking station</p> <p>The feasibility study should identify suitable locations within the activity centre and should be to be undertaken in line with the Car Parking and Travel Demand Study.</p>	Medium term	Project	<p>Lead: ED&CP, RIP Support: SCI, Community and business groups</p>	
<p>55 ✓ Prepare a strategy to improve employment and training opportunities and support entrepreneur programs</p> <p>Support social enterprise and work for the dole initiatives; training opportunities to improve employability of high school students and people with disabilities and incentives for local creative start-up and entrepreneur support programs and support groups for migrant population.</p>	Short term	Project	<p>Lead: ED&CP Support: CC, AD</p>	
<p>56 Establish a vertical vocation/trade college in the Civic and Community Precinct</p> <p>Collaborate with government and training providers to establish a vertical vocation/trade college in the Civic and Community Precinct.</p>	Medium term	Project	<p>Lead: ED&CP Support: AD, DoE, DESBT, HEW Community groups, Local business, Chamber of Commerce, Queensland Government, Federal Government</p>	
<p>57 ✓ Develop a targeted business and investment strategy</p> <p>Attract a greater variety of shops, office spaces and business into the centre. Strategy to attract new investments, business and events that activate the centre including cinemas, office park precinct, commercial uses, speciality retail, hotels and target a mix of government departments and agencies.</p>	Short term	Project	<p>Lead: ED&CP Support: CC, Various business groups, Local developers, Chamber of Commerce</p>	

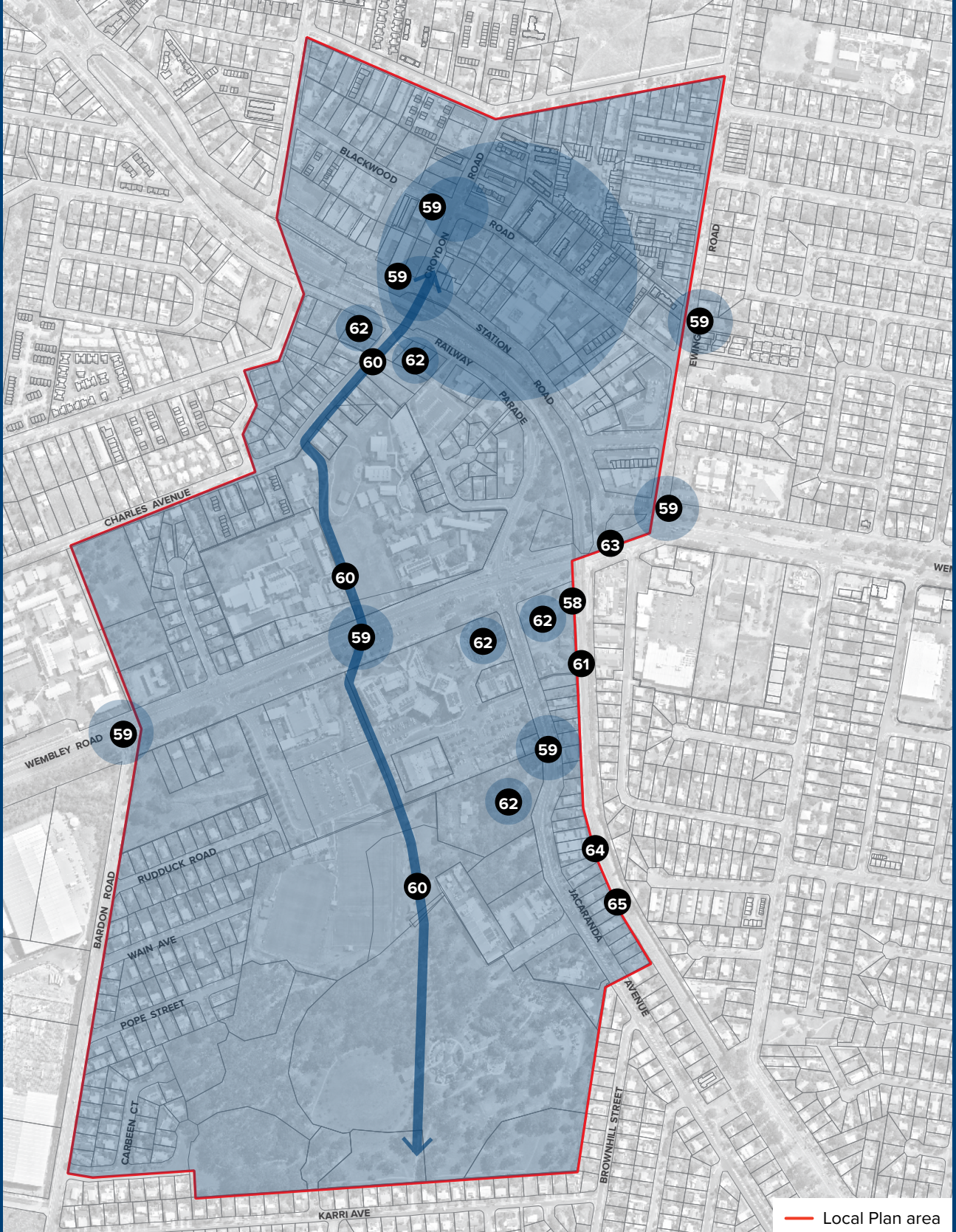
✓ Summit Outcome



Place activation activity on Croydon Road



05 DISTINCTIVE



Note: Some number locations are general only and not intended to indicate specific areas.

05 DISTINCTIVE				
Actions		Timing	Type	Stakeholders
58	Deliver key actions from the Urban Art Strategy Develop a framework to identify existing and future opportunities for public art in Logan Central to activate the centre and strengthen the cultural identity of the community. Collaborate with local artists and community groups to identify, design, and install key short term public art projects as informed by the public art framework. Key projects may include entry statements, temporary installations in vacant sites, street art, view from train line and train bridge treatment or art works as a wayfinding experience and other applications.	Short to medium term	Project	Lead: ED&CP, LCI Support: LCI, LEC, Parks, RIP, CC, Community groups, Arts community
59 ✓	Design and deliver entry statements to Logan Central Create a sense of arrival and promote community identity of Logan Central. Key sites identified include intersections between key sites, roads, and infrastructure.	Medium term	Project	Lead: CC, ED&CP Support: LCI, Parks, RIP, RID, LW, Community and business groups, Arts community
60 ✓	Develop a cultural trail through the LCCCP Promote local identity and culture with art and performance installations trail installed to create a visitor experience and journey along the promenade and pathways in the gardens. Installations could be temporary or permanent, could include art shows, lighting and opportunities for performance. The new location for the art gallery will connect with the choreographed trail.	Medium term	Project	Lead: ED&CP Support: LCI, LEC, Parks, RIP, Community groups, Arts community
61 ✓	Design and deliver wayfinding and directional signage in key locations Provide legible signage and mapping in Logan Central to indicate key sites in and around Logan Central for improved ease of navigation and promote identity of place.	Short term	Project	Lead: ED&CP Support: LCI, CF, RIP, CC, SCI, Community groups, Local business, Arts community
62	Facilitate catalyst gateway/landmark buildings Explore opportunities to facilitate gateway and landmark buildings on key landmark sites in the centre.	Ongoing	Project	Lead: ED&CP Support: DA, Key landowners, Local developers, investLogan
63	Undertake a place assessment Undertake a place assessment for Logan Central to assess and identify community values and their priorities and to function as a benchmark for future investment in the centre.	Complete	Program	Lead: ED&CP Support: CC, Community stakeholders
64	Develop a 3D model for the Logan Central Activity Centre Develop a 3D model of Logan Central to be used as an interactive tool as part of the Logan Central Summit community engagement as a visual depiction of a future vision for the centre.	Complete	Project	Lead: ED&CP Support: CC, Community stakeholders
65 ✓	Develop a Place Branding and Marketing Strategy Develop a strategic branding, marketing and media strategy that will define and strengthen community and place identity of Logan Central and will guide cohesive stakeholder engagement.	Complete	Program	Lead: ED&CP Support: CS&I, CC

✓ Summit Outcome



06 EMBRACING NATURE



Note: Some number locations are general only and not intended to indicate specific areas.

06 EMBRACING NATURE				
Actions		Timing	Type	Stakeholders
66 ✓	Deliver the Croydon Road Precinct Streetscape Master Plan Collaborate with key landowners and business to develop an overall streetscape master plan for the Croydon Road Precinct to identify a pipeline of urban renewal capital works projects and activation strategies towards strengthening community identity, providing opportunity for business to prosper, and create a safe precinct where people can live, work and play. The master plan will identify projects for designs and implementation to deliver high quality streetscape upgrades to create a pedestrian orientated precinct that supports development of small ground floor retail activities and advances connections as part of the major cycle and pedestrian network.	Complete	Project	Lead: ED&CP Support: Parks, SCI, RIP, RID, LW, CF, LCI, Local business
67 ✓	Develop an overall streetscape design framework for key streets and pedestrian connections in the centre Develop an overall strategy to improve function and amenity of existing street and pedestrian connections within Logan Central core areas. The framework should include a Logan Central Design Style Guide to define the look, feel and identity for the streets and connections.	Short term	Project	Lead: ED&CP Support: Parks, RIP, RID, LW, AV, LCI
68 ✓	Enhance and embellish existing parks and recreation spaces Upgrades will include Woodridge Skate Bowl, Morgan Park, Rainbow Park, Wembley Falls Park, and People's Place Park. Improve Park facilities and better connect parks throughout Logan Central to deliver parks that are safe and offer a variety of amenity to the community and protect natural biodiversity in the area.	Long term	Project	Lead: Parks Support: ED&CP, RIP, HEW, RID, SCI, Businesses
69 ✓	Enhance and embellish Logan Gardens Explore opportunities for Logan Gardens as a community and natural asset that will deliver high quality open space and host diverse community events, a variety of recreation/sport options and offers family activities for local and visiting families whilst protecting natural beauty and biodiversity.	Short to medium term	Project	Lead: Parks Support: SCI, ED&CP, HEW Local residents, Community
70 ✓	Support community garden initiatives Promote and expand on existing community garden facilities in the local area including Elm Park and the Logan City Council community garden. Promote community gardens as an educational and training tool for local school students and to upskill people in the local area seeking employment.	Short to medium term	Project	Lead: SCI Support: Parks, ED&CP, SCI, HEW, Schools Local business, Community groups
71 ✓	Design and deliver streetscape upgrades for Croydon Road and surroundings public space Design and deliver streetscape upgrades that promote an active street frontage, provide connectivity as part of the district cycle network and improve connection with the train station and across the railway line into the Centre Core Precinct area. Design will assess road configuration, car parking and opportunities for gathering spaces, outdoor dining, Global Food Market, and night-time economy.	Short term	Project	Lead: ED&CP Support: Parks, RIP, RID, LW, LCI, SCI, Local business

✓ Summit Outcome

06 EMBRACING NATURE				
Actions		Timing	Type	Stakeholders
<p>72 ✓</p> <p>Deliver enhancements in accordance with the Croydon Road Streetscape Masterplan</p> <p>Design and deliver streetscape upgrades to streets in the Croydon Road Precinct to align with the streetscape masterplan. Streets include Station Road, Blackwood Road, Railway Parade, Carmody Street and North Road.</p>		Medium term	Project	<p>Lead: ED&CP Support: Parks, RIP, RID, LW, LCI, SCI, Local business</p>
<p>73 ✓</p> <p>Prepare a strategy to achieve sustainable development in Logan Central</p> <p>Develop a strategy and identify actions that will achieve economic, environmental and social objectives in a balanced manner.</p>		Medium term	Project	<p>Lead: ED&CP, HEW Support: Parks, SCI, RIP, HEW, RID, LW, LCI, Local business</p>

✓ Summit Outcome





Wembley Road Shared Pathway



CITY OF
LOGAN

LOGAN CENTRAL

 logan.qld.gov.au