

Road resurfacing work

Division 6 Councillor Tony Hall along with City Infrastructure Chair Teresa Lane, is pleased to let you know that works are planned for Bethania.

Did you know?

This financial year we plan to resurface over 140 streets covering nearly 80 km across Logan. It will take about 40,000 tonnes of asphalt, which is the distance of a road from Logan to the border of New South Wales.

Why is resurfacing needed?

Road resurfacing is regular maintenance that is needed to prevent deterioration and damage. The new road surface layer protects and waterproofs the road base, just like re-painting your house will protect your walls from the elements.

Benefits of resurfacing

- ✓ A safer, smoother road with better surface grip.
- ✓ Improved waterproofing to prevent potholes.
- ✓ Extends the life of the road to avoid more costly repairs later.

What is involved?

Resurfacing work is undertaken in 3 stages:



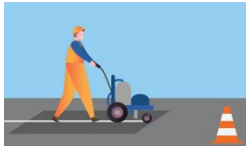
Stage 1: Preparation works

Excavating and removal of the existing road surface.



Stage 2: Primary works

Repairs to the road base, sealing, resurfacing and rolling new layers.



Stage 3: Finishing works

Line marking, signage and reinstating barriers.

More information

Scan the QR code to find out more about our resurfacing work, including frequently asked questions.

☎ 07 3412 3412

✉ RoadComms@logan.qld.gov.au



logan.qld.gov.au

When and where

Dates	January 2024 to March 2024
Work hours	7 am to 6 pm Monday to Friday
Where	Canterbury Ln, Eastbourne Rd, Bethania
Contractor	Fulton Hogan
Timeframe	Stages 1 and 2 are expected to go from 19 January to 24 January 2024, weather and conditions permitting. Stage 3 will be completed 1 to 2 weeks later.

On-street parking

Please remove your vehicle from the road when works are set to start.

What can I expect?

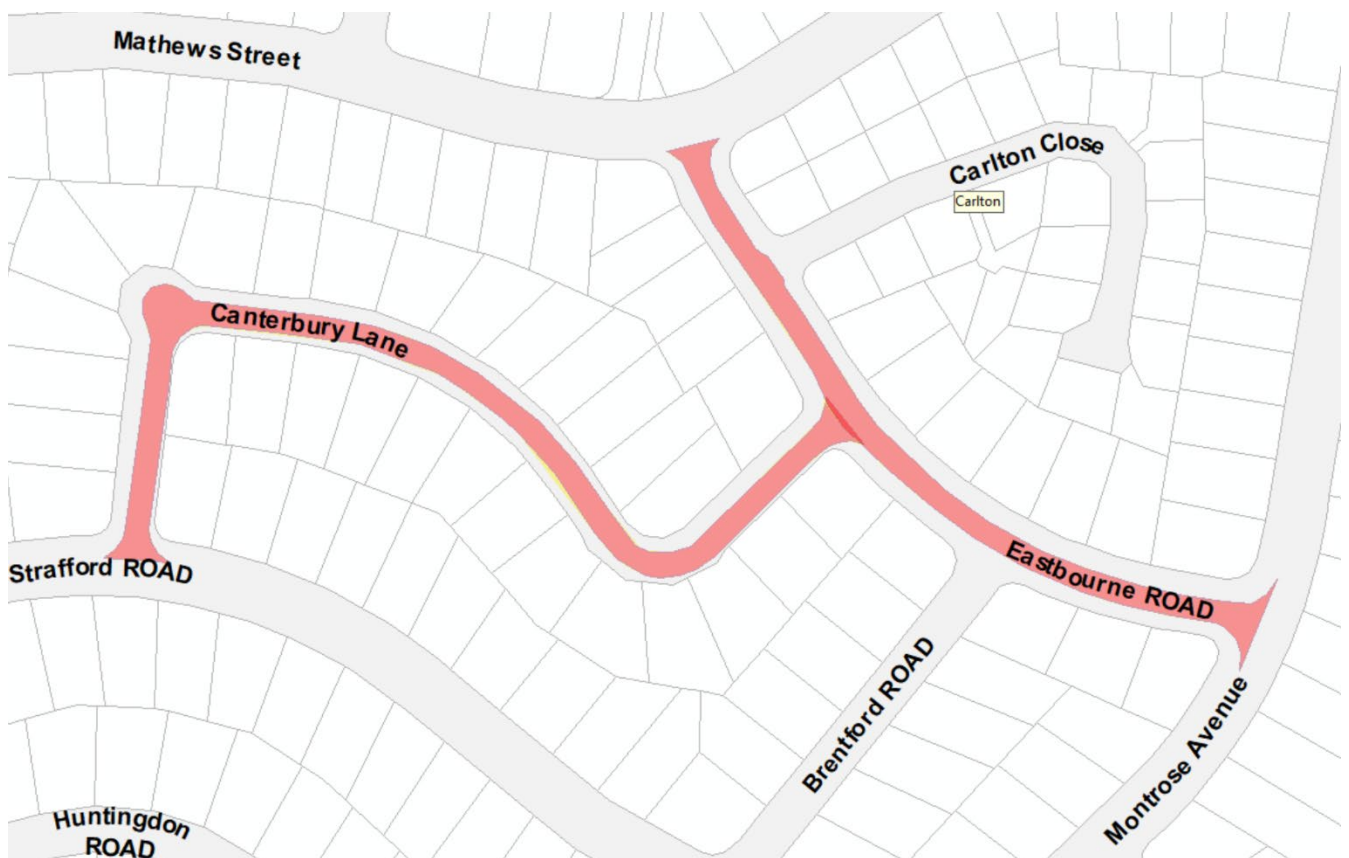
Some of the temporary changes include:

- traffic delays, diversions or detours
- reduced speed limits
- loss of street parking and driveway access restrictions
- bus stop relocations
- at times – odours, noise, dust and vibration.

We aim to minimise disruptions and appreciate your patience and cooperation to help us complete the works efficiently.

Name Lastname
Address Line 1
Address Line 2
Suburb QLD Postcode

Project work zone



logan.qld.gov.au

