



Logan Village Implementation Plan

Policies, Programs and Projects





Acknowledgment of Country

Logan City Council acknowledges the Traditional Custodians of the land, pays respect to Elders past, present and emerging, and extends that respect to all Aboriginal and Torres Strait Islander peoples in the City of Logan.

List of Abbreviations

AV	Advocacy Program – Office of the CEO
CC	Corporate Communications
CECE	Customer Experience and Community Engagement Branch
CS&L	City Safety and Liveability Branch
DA	Development Assessment Branch
ED&CP	Economic Development and City Planning Branch
ELT	Council’s Executive Leadership Team
HEW	Health, Environment and Waste Branch
LCI	Libraries and Creative Industries Branch
LW	Logan Water
Parks	Parks Branch
RCM	Roads Construction Maintenance Branch
RID	Road Infrastructure Delivery Branch
RIP	Road Infrastructure Planning Branch
SCI	Sports and Community Infrastructure Branch
VE	Venue and Events Branch





Contents

Introduction	4
Logan Village priority projects completed	7
Logan Village Green Master Plan	7
Upgrade the playground on the Logan Village Green	8
Logan Village Events Strategy	9
Logan Village Riverlink	9
Deliver an active transport link between Yarrabilba and Logan Village on the disused spur line.....	10
Coffee shop on the Village Green	11
Upgrade Logan Village Green	11
Relocate the skate park	12
Priority policies, programs and projects.....	13
01 People focused.....	16
02 Responsive	20
03 Connected.....	24
04 Resilient.....	28
05 Distinctive.....	30
06 Embracing nature.....	32

Cover image: Logan Village 'Place to Play' Adventure Playground

Introduction

The purpose of the Logan Village Implementation Plan is to progress the aims and objectives of the Logan Village Local Plan from 'visioning' to 'doing' through the process as set out in Figure 1. The Implementation Plan does this by identifying and prioritising a number of different place-based actions that are categorised as either policy, program or project. Each place-based action ultimately contributes to delivering the vision for Logan Village. Depending on the type of place-based action, it may be delivered by Council, the Queensland Government, the Federal Government, the private sector or the community. The process of identification and prioritisation of place based actions is the result of ongoing engagement with stakeholders, ensuring the place-based actions represent the current and future needs of the community, government, industry, business and landowners.

These aspirational place-based actions will assist planning and coordination across Council to deliver the actions required to progress the vision of the Logan Village Local Plan (master plan). This approach allows Council to commit to a framework to deliver the vision of the master plan over the short term (up to five years), medium term (five to ten years) and long term (more than ten years), whilst allowing a more flexible approach in the delivery of priority place-based actions.

Following the Logan Village Forum several key initiatives and actions were endorsed by Council which informed the Logan Village Implementation Plan. The Implementation Plan has been updated to reflect projects delivered since 2018 and updates to the place-based actions for the next five-year period (2023–2028). New actions have been added where relevant identifying new place making priorities as the city's dynamic centres continue to progress.

Place-based actions have been recategorised by applying the overarching principles of Logan's Urban Design Framework (UDF), endorsed by Council (Figure 2). The vision of the UDF is *"High quality Urban Design in Logan will drive positive place-based outcomes and is a foundation for all future investment decisions"* and therefore provides the appropriate lens to consider the key actions/tasks for the Implementation Plan. When the six (6) principles are holistically considered they provide the foundation to create a high-quality built environment that matches the aspirations of its residents.

The place-based actions recommended for implementation are set out in more detail in this document. The Place Making and Urban Design Program (Economic Development and City Planning Branch) will lead collaboration across Council, community and business stakeholders to deliver key place-based actions for Logan Village. Where identified, the internal branch/es recommended to ideally lead the project are identified. The place-based actions are expected to be updated regularly and do not represent a commitment by Council or other stakeholders for funding or delivery. The place-based actions can be considered for funding, applications for government grants and partnerships with a range of stakeholders that lead to the eventual delivery of the policy, program or project. The Division 4 Councillor will be consulted on all place-based actions as this work continues.



Figure 1 – ‘Visioning’ to ‘Doing’

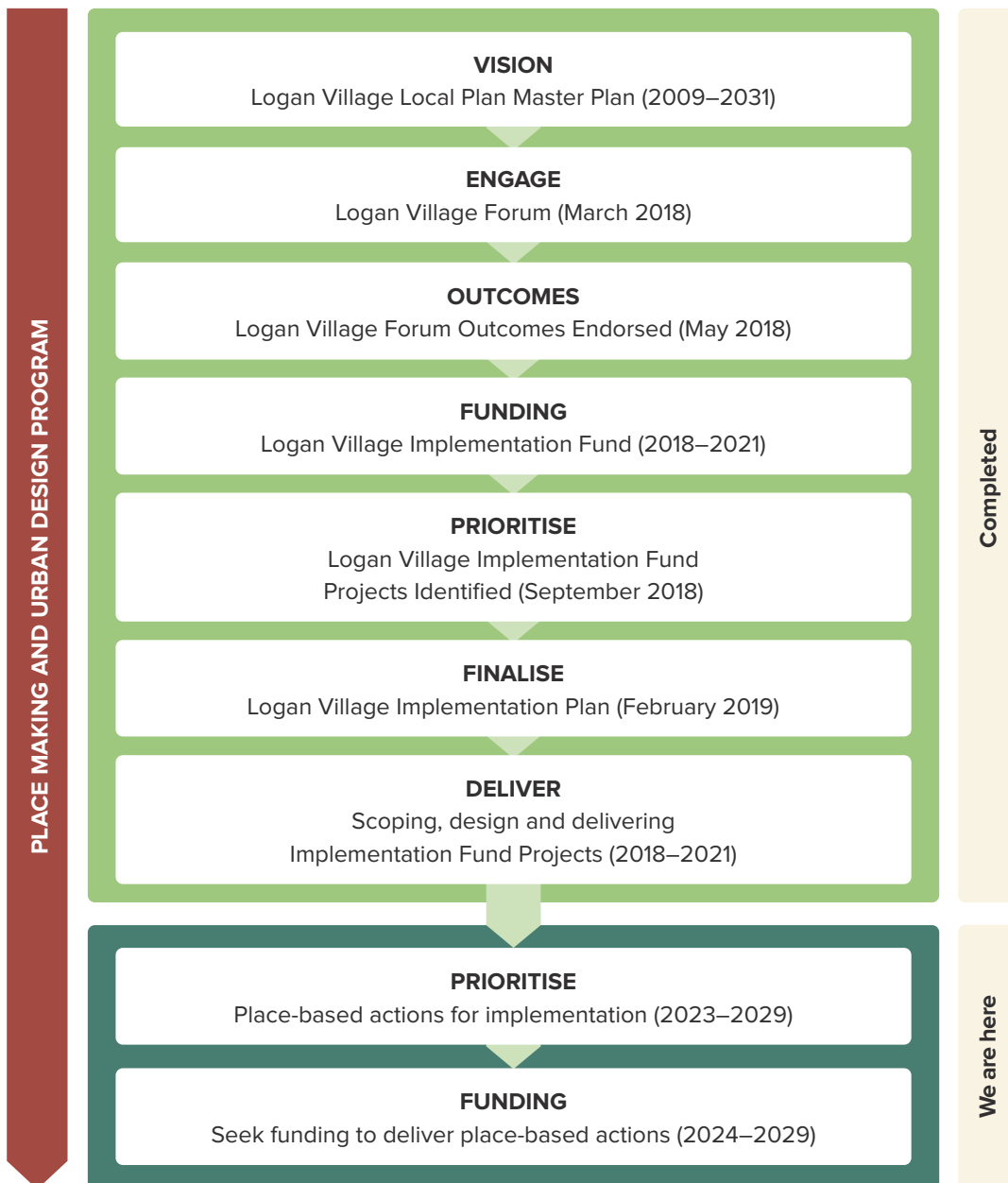
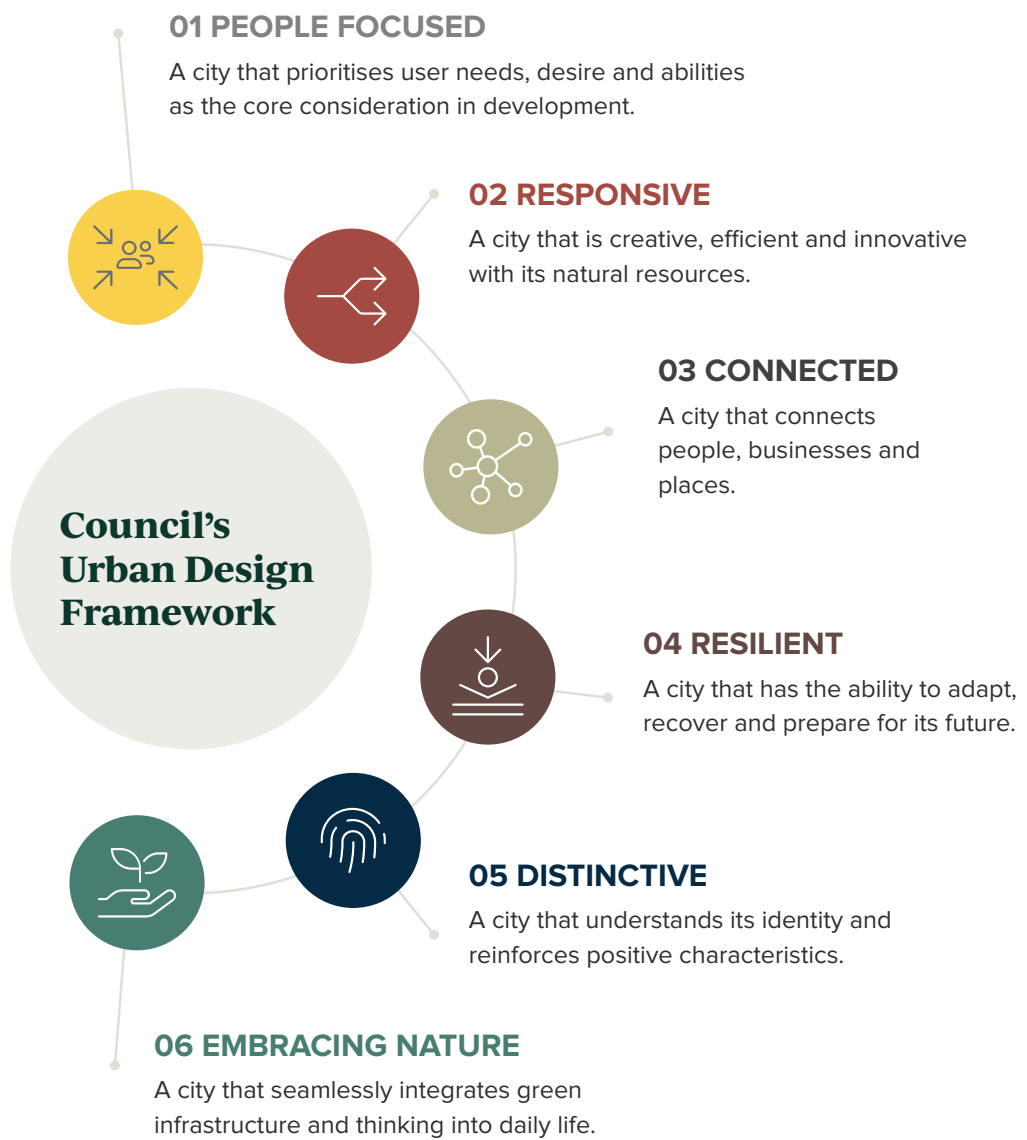




Figure 2 – Principles of the Logan Urban Design Framework



Logan Village priority projects completed



Logan Village Green Master Plan

A key outcome from the Logan Village Forum was the development of an updated precinct master plan for the Village Green precinct, working with affected land owners, user groups, community groups and local businesses to update the Logan Village Green Master Plan to facilitate the upgrading, embellishment and/or expansions of the Village Green to inform the delivery of an upgraded playground.

To successfully implement the Logan Village Implementation Plan a comprehensive review and update of the 2012 Village Green Master Plan was required. Village Green Master Plan ensures that new infrastructure is appropriately integrated with existing facilities and located in accordance with a holistic long-term urban design vision for the Logan Village Green.

The Logan Village Green Master Plan was endorsed by Council in 2020.



Upgrade the playground on the Logan Village Green

The new Logan Village Adventure Playground, located on the village green, was officially opened in May of 2021. This landmark project delivered on a community priority as identified in the Implementation Plan.

A community inspired design process was key to the project delivery. Council hosted a 'Place to Play' event that focused on engaging children to assist in providing ideas for the design of the playground. The new playground includes a distinctive birds nest lookout, slides, trampolines, a flying fox, totem poles with ropes and a dry creek bed flanked by timber steppers and balance beams. The playground has been designed to complement the heritage character of the village. The project also included a redesigned RSL cenotaph, featuring new sandstone pillars, two panel images of soldiers, three flag masts and lighting.

The \$1.6 million project was jointly funded by Council and the Federal Government under the Building Better Regions Fund Round 3. The highly collaborative project was awarded both the Stakeholder Engagement Award and also the overall project winner by the Planning Institute of Australia (PIA) QLD 2021.



Logan Village Events Strategy

The Logan Village Events Strategy provides a framework for planning and delivering events in Logan Village. The strategy was informed by community consultation including an ideation workshop in December of 2020.

The Logan Village Event Prospectus is the key product of this project delivered in August 2021. The prospectus sets out a series of opportunities for local businesses and organisations to partner with Council to develop their own unique event. The project was delivered with a 50% funding grant under the Building Better Regions Fund Round 3.



Logan Village Riverlink Shared pathway connection with My Home and the River Estate

The Logan Village River Link was opened in August of 2021. The link provides a direct connection between the residential areas south of Anzac Avenue to the Logan Village Green. The 2.5 metre wide path, bridge and underpass are improved by unique views of the river and its surrounds. The project includes new safety cameras, lighting and a viewing platform that overlooks the river.

The \$1.2 million project was funded through the Logan Village Implementation Fund to improve connectivity, to improve engagement with the Logan River and promote active forms of transport.



Deliver an active transport link between Yarrabilba and Logan Village on the disused spur line

The Logan Village to Yarrabilba Rail Trail was officially opened in December 2021. The 3.5 km rail trail re uses the old Bethania to Beaudesert rail corridor and creates an active link between Logan Village and Yarrabilba. The 2.5m wide asphalt pathway extends through native bushland and is designed for walking, jogging, hiking and cycling.

The rail trail features a watercourse crossing, flood mitigation, access-controlled bollards and custom design signage. The entry signs include repurposed ironwork from the old bandstand on the Village Green.

The \$2.6 million project is a joint initiative of Council and the State Government who contributed \$2 million under the Unite and Recover grant funding program.



Coffee shop on the Village Green

The establishment of a coffee shop on the Village Green was a high priority identified during the Logan Village Forum.

A temporary pop-up coffee shop was installed on the Logan Village Green up to the end of 2021 following an Expression of Interest process to seek proposals from interested operators to deliver this service.

Positioned next to the adventure playground the coffee shop benefits from the activity of children and their parents. The innovative pop-up shop was operated from a custom designed trailer that can be moved on and off site with ease. The coffee shop complements existing strategies to increase activity within the village green and enhances the amenity offered in the region.

The existing coffee shop permit license was terminated by the operator and a new EOI will be issued for the establishment of a temporary pop-up coffee shop.



Upgrade Logan Village Green

Redevelop the existing Logan Village Green to improve drainage conditions, landscaping, lighting and signage to enhance what is the focal point of the Logan Village community.

The project includes:

- › A new tree lined circular path that will frame a central event space
- › New park furniture including seats, bins and shelters
- › Installation of a new basketball half court
- › New formal car park
- › Lighting that will improve the usability of the space and improve safety

The enhancement works are required to ensure all elements of the master plan can be fully implemented. The civil and drainage works that underpin this project will ensure all areas of the Village Green can be utilised to the benefit of the community and visitors alike. The \$1.2 million project is a joint initiative of Council and the Federal Government under the Local Roads and Community Infrastructure Program.



Relocate the skate park

The old skate park was demolished and replaced with a purpose-built park in the south west of the Village Green directly adjacent to the Logan Village Police Station. The new skate park provides a high-quality experience for riders of all ages and abilities. The new park offers a challenging set of features that activates the Village Green and engages the community. The new skate park also includes lights to ensure the use of this prized asset is maximised, promoting an extended activity profile on the Village Green.

The design of the park responds positively to the existing character of the Green, existing park infrastructure and the heritage of the wider area.

Priority policies, programs and projects

The following table recategorises the key actions/tasks under the six (6) guiding principles of the UDF. It is acknowledged that the principles are highly interrelated and actions/tasks could relate to one or more principle, however the categorisation provides a useful means to break down the list and track efforts across different priorities of place making.

The table also identifies whether each action/task is a summit outcome, whether it is a policy, program or project and crucially the projected timing suggested for implementation.

	Actions	Timing	Summit outcome	Type
01 PEOPLE FOCUSED	1 Upgrade the playground on the Logan Village Green	Complete	✓	Project
	2 Identify a suitable location, design and deliver a dog park for Logan Village	Complete	✓	Project
	3 Improve community safety and surveillance	Ongoing		Program
	4 Advocate for appropriate local community infrastructure	Medium term		Project
	5 Upgrade the Logan Village Police Beat	Complete	✓	Project
	6 Investigate the introduction of traffic calming measures for Logan Village	Short to medium term	✓	Project
	7 Events Strategy for Logan Village Green	Complete	✓	Program
	8 Activation of the Village Green	Ongoing	✓	Program
	9 Coffee shop on the Village Green	Complete	✓	Project
	10 Develop a multi-functional community centre	Short to medium term	✓	Project
	11 Place based specific events for the activity centre	Ongoing		Program
	12 Deliver the RSL events area	Short term		Project
02 RESPONSIVE	13 Relocate skate park	Complete		Project
	14 Activate the Logan River Precinct	Short to medium term	✓	Project
	15 Expand the Logan Village Hotel to provide more facilities	Short term	✓	Project
	16 Expansion of the industrial precinct	Medium term	✓	Policy
	17 Upgrade the buildings in the shopping centre precinct and retain heritage character	Short to medium term	✓	Program
	18 Update the Local Plan planning scheme provisions	Complete	✓	Policy
	19 Advocate for change in Logan Plan 2025	Medium term		Policy
	20 Provide incentives for development of short-term accommodation, retail, restaurants, coffee shops and RV Park	Short term	✓	Policy
	21 Prepare a precinct master plan for the Village Green precinct	Complete	✓	Project

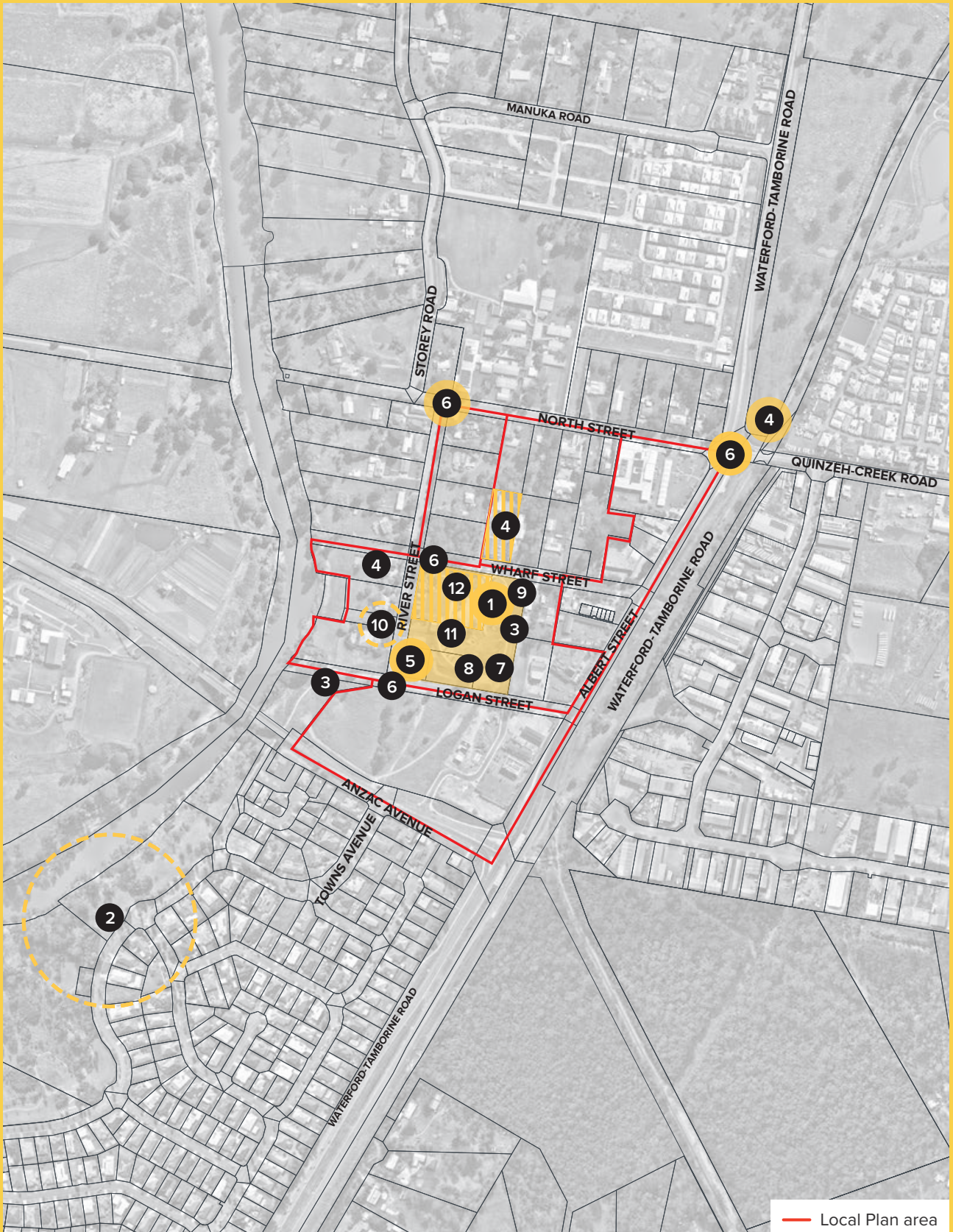
Implementation Plan

	Actions	Timing	Summit outcome	Type
03 CONNECTED	22 Parking Strategy for the activity centre core	Medium term		Project
	23 Shared pathway connection with My Home and the River Estate	Complete	✓	Project
	24 Upgrade the disused Quinzeh Creek bridge	Short term	✓	Project
	25 Advocate for Logan Village to become key node in the rail trail infrastructure of the region	Short term	✓	Policy
	26 Deliver an active transport link between Yarrabilba and Logan Village on the disused spur line	Complete	✓	Project
	27 Public Transportation Strategy	Medium term	✓	Project
	28 Design and deliver the new Logan Village Main Street	Short to medium term	✓	Project
	29 Upgrade of Waterford-Tamborine Road	Ongoing	✓	Project
	30 Deliver a new active shared transport link along the Logan River	Medium to long term	✓	Project
	31 New access road connecting North Street to Manuka Road	Medium term	✓	Project
	32 Extension of Manuka Road	Complete		Project
	33 Extension of River Street	Medium term		Project
	34 Upgrade of Anzac Avenue	Medium term	✓	Project
	35 Signalised intersection at Waterford-Tamborine Road and Quinzeh Creek Road	Complete	✓	Project
	04 RESILIENT	36 Advocate for Green Building Technology	Ongoing	
37 Digital connectivity inclusive of free Wi-Fi to the Village Green		Complete	✓	Project
38 Retail and Business Attraction Strategy		Short to medium term	✓	Project
39 Incentivise the early delivery of placemaking catalyst projects		Ongoing		Policy
40 Establish the Logan Village Advisory Group		Complete	✓	Program
41 Flood resilience strategy		Medium term		Project

	Actions	Timing	Summit outcome	Type	
05 DISTINCTIVE	42	Design and implement welcome and entry statements to Logan Village	Short term	✓	Project
	43	Community Art Gallery	Long term		Project
	44	Develop a suite of wayfinding signage for Logan Village	Complete	✓	Project
	45	Deliver a place branding strategy for Logan Village	Complete	✓	Project
	46	Develop a strategy to retain the rural character and reflect the rich heritage of the Village	Short term	✓	Policy
	47	Deliver a targeted marketing campaign for Logan Village	Short term	✓	Program
	48	Investigate opportunities to revitalise heritage features	Short to medium term		Project
	49	Upgrade the heritage courtyard on Logan Village Green	Medium term		Project
06 EMBRACING NATURE	50	Logan Village Streetscape Master Plan	Short term	✓	Project
	51	Green link/boardwalk along the Logan River	Short to medium term	✓	Project
	52	Streetscape enhancements and activation of North Street	Short to medium term	✓	Project
	53	Streetscape enhancements and activation of Wharf Street	Short to medium term	✓	Project
	54	Streetscape enhancements and activation of Logan Street	Short to medium term	✓	Project
	55	Streetscape enhancements and activation of Albert Street	Medium term	✓	Project
	56	Streetscape enhancements and activation of River Street	Short to medium term	✓	Project
	57	Streetscape enhancements and activation of Towns and Anzac Avenue	Short term	✓	Project
	58	Upgrade the Logan River precinct	Medium to long term	✓	Project
	59	Re-establish access to the Logan River	Medium term	✓	Project
	60	Upgrade the Logan Village Green events space	Complete	✓	Project



01 People focused



Note: Some number locations are general only and not intended to indicate specific areas.

01 PEOPLE FOCUSED

Actions	Timing	Type	Stakeholders
<p>1 Upgrade the playground on the Logan Village Green</p> <p>✓ Upgrade the existing playground on the Village Green or investigate the delivery of a new playground. The design and siting of the equipment should have due regard to the Village's rural and heritage character.</p> <p>Council lead a highly collaborative and award winning design process for the new playground. Today the Logan Village Adventure playground is a much loved community asset that positively reflects the heritage and character of the Village.</p> <p>The playground was officially opened in May of 2021.</p>	Complete	Project	<p>Lead: ED&CP</p> <p>Support: Parks</p>
<p>2 Identify a suitable location, design and deliver a dog park for Logan Village</p> <p>✓ Identify a suitable location, work with landowners and community groups to determine the size, scope and embellishments for the delivery of a dog park in the Logan Village area.</p>	Complete	Project	<p>Lead: Parks</p> <p>Support: HEW and ED&CP</p>
<p>3 Improve community safety and surveillance</p> <p>a) CCTV poles have been installed in both the Village Green and on the Logan Village Riverlink.</p> <p>b) The potential for CCTV to be installed on the Logan Village to Yarrabilba Rail trail to be explored.</p> <p>c) Efforts will continue to implement crime prevention through environmental design (CPTED) principles and features and if necessary further CCTV within the Village Green.</p>	Ongoing	Project	<p>Lead: SCI</p> <p>Support: ED&CP, AV, Local Business and Community</p>
<p>4 Advocate for appropriate local community infrastructure</p> <p>Advocate for the upgrade and addition of new community infrastructure – consistent with Council's Community Infrastructure Strategy.</p>	Medium term	Project	<p>Lead: SCI</p> <p>Support: ED&CP, LCI, CECE, Parks, CC, AV, Businesses and Community</p>
<p>5 Upgrade the Logan Village Police Beat</p> <p>✓ Advocate for the upgrade of the Logan Village Police Beat to ensure a greater police presence in Logan Village. Police Beat has been upgraded with additional capacity to serve the community.</p>	Complete	Project	<p>Lead: QPS</p> <p>Support: SCI, AV</p>
<p>6 Investigate the introduction of traffic calming measures for Logan Village</p> <p>✓ Investigate suitable traffic calming measures and identify local roads that require the implementation of identified traffic calming measures.</p>	Short term	Project	<p>Lead: ED&CP</p> <p>Support: RIP, RID, CECE, SCI, Businesses and Community</p>

✓ Summit outcome

Implementation Plan

01 PEOPLE FOCUSED				
Actions		Timing	Type	Stakeholders
<p>7 Events Strategy for the Logan Village Green</p> <p>✓ Prepare and deliver an Events Strategy (2019–2024) for Logan Village that aligns with Council’s economic, tourism and community objectives.</p> <p>Involve and activate the local community in highlighting the issues and opportunities that exist to achieve the shared vision along with building capacity and inclusion in delivering successful events.</p> <p>An event prospectus was delivered in 2021. The prospectus identifies opportunities for businesses and organisations to partner with Council to deliver events on Logan Village Green.</p>		Complete	Program	Lead: ED&CP
<p>8 Activation of the Village Green</p> <p>✓ Work with local community groups and businesses to deliver ongoing place activations/events to the Village Green.</p>		Ongoing	Program	Lead: ED&CP
<p>9 Coffee shop on the Village Green</p> <p>✓ Deliver a temporary coffee shop on the Village Green as a way to activate the Village Green and attract new business opportunities to the activity centre. A temporary coffee shop was operational on the Village Green until January 2022 (Village Green Upgrade works). Council will explore options to re establish a service.</p>		Complete	Project	Lead: ED&CP Support: Parks
<p>10 Develop a multi-functional community centre</p> <p>✓ a) Prepare a feasibility study for a multi-functional community facility. Investigate the needs and inclusions for a general community space. Consider the potential for co-location and a range of uses to act as a catalyst. Ensure proposals embody and reflect a rural and heritage character, taking into account proximity to the river and activities on the Logan River.</p> <p>b) Delivery of the centre should include the various local community organisations so that the facility exudes a sense of community. The bulk, scale, size and design of the centre (and its ancillary facilities, such as car parking) should be typical of existing built form. Proposals should be informed by Council’s endorsed sustainability priorities e.g. Green Building Guide.</p> <p>Should a co-location strategy be pursued the focus of the design and operation of the centre should include bringing visitors and new business to Logan Village.</p>		Short term	Project	a) Lead: ED&CP, SCI Support: SCI b) Lead: SCI Support: ED&CP, AD, LCI, HEW

✓ Summit outcome

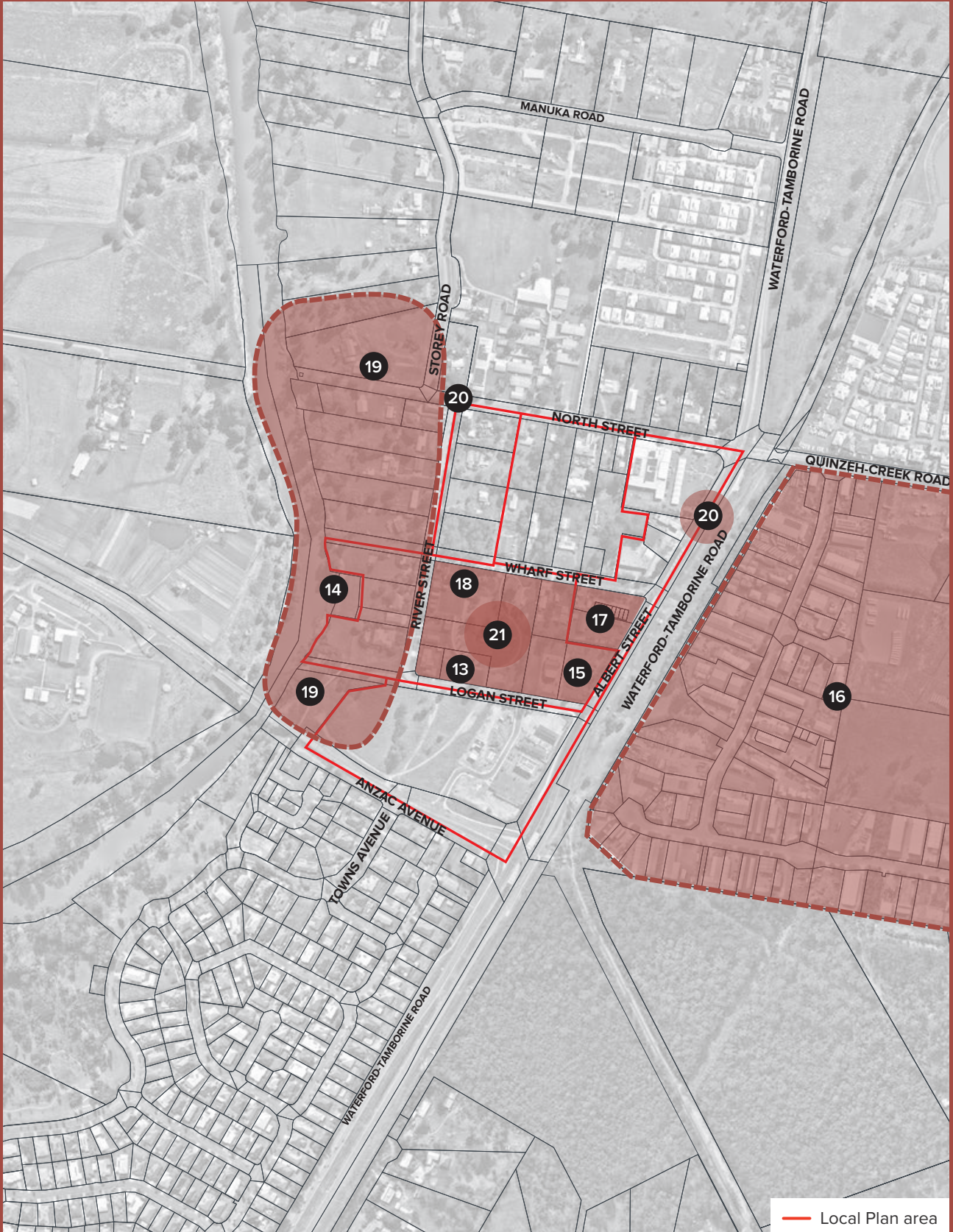
01 PEOPLE FOCUSED

Actions	Timing	Type	Stakeholders
<p>11 Place based specific events for the activity centre</p> <p>Plan and host a place based specific event/s with the purpose to engage the community, stakeholders, developers and investors to catalyse development and investment opportunities within the activity centre.</p> <p>The Logan Village Forum, held on 7 March 2018, brought together the community, government, industry, business owners and property owners to talk about the economic and community potential for Logan Village.</p>	Complete	Program	<p>Lead: ED&CP</p> <p>Support: CC, CECE</p>
<p>12 Deliver the RSL events area</p> <p>Improve amenity and accessibility of RSL cenotaph. Remove existing car park areas to provide additional green space for memorial related events.</p>	Short term	Project	<p>Lead: ED&CP</p> <p>Support: Parks</p>

✓ Summit outcome



02 Responsive



Note: Some number locations are general only and not intended to indicate specific areas.

02 RESPONSIVE

Actions	Timing	Type	Stakeholders
<p>13 Upgrade the skate park</p> <p>A detailed skate park conditioning assessment confirmed that the skate park was reaching ‘end of asset life’ and significant upgrades to the existing facility were not recommended from an economic or safety perspective. This provided the opportunity to develop a new skate park in an improved location which is integrated with the revised Village Green.</p> <p>The Logan Village Skate Park was officially opened in November 2022 in a ceremony that was attended by Logan born Gold Medalist Logan Martin.</p>	Complete	Project	<p>Lead: ED&CP</p> <p>Support: Parks, Community Groups</p>
<p>14 Activate the Logan River Precinct</p> <p>✓ Investigate the potential and feasibility for river access and complementary uses to act as a catalyst for an activated river precinct.</p> <p>Potential uses to be considered include:</p> <ul style="list-style-type: none"> a) RV/holiday park/short term accommodation establishment b) Cafés and restaurants along the Logan Riverbank c) Active and passive recreation and sports activities (e.g. kayaking) d) Heritage and environmental tourism related uses 	Short to medium term	Project	<p>Lead: ED&CP</p> <p>Support: Parks, HEW, Landowners, Businesses, Chamber of Commerce</p>
<p>15 Expand the Logan Village Hotel to provide more facilities</p> <p>✓ Work with the Logan Village Hotel to provide more facilities, expand operations and to assist in the activation of the Village Green.</p> <p>Ensure that the expansion of the Logan Village Hotel complements the vision of the Logan Village Green Master Plan.</p>	Short term	Project	<p>Lead: DA</p> <p>Support: ED&CP, DA, Landowners</p>
<p>16 Expansion of the industrial precinct</p> <p>✓ Investigate the potential expansion of the industrial precinct towards the east in support of low impact industrial uses, local employment opportunities and the provision of appropriate buffering treatments. Any expansion should be respond to environmental features and assets.</p> <p>Advocate for the existing zoning provisions to reviewed as part of the preparation of Logan Plan 2025.</p>	Medium term	Policy	<p>Lead: ED&CP</p> <p>Support: CECE, SCI, HEW, DA, Businesses</p>

✓ Summit outcome

Implementation Plan

02 RESPONSIVE				
Actions		Timing	Type	Stakeholders
<p>17 ✓ Upgrade the buildings in the shopping centre precinct and retain heritage character</p> <p>a) Work with landowners to facilitate the upgrade of buildings in the shopping centre precinct and building facades together with streetscape upgrades. Retain heritage character for buildings in Logan Village. Future works should seek to incorporate sustainability elements consistent with Council's priorities.</p> <p>b) Investigate the potential for enhancing heritage character by sourcing additional features from the local area to further reinforce rich heritage of the centre.</p>		Short to medium term	Program	<p>Lead: ED&CP</p> <p>Support: CECE, DA, Businesses and Community</p>
<p>18 ✓ Update the Local Plan planning scheme provisions</p> <p>The Logan Planning Scheme Provisions have been amended to include short-term accommodation in the Village and Centre Frame precincts as defined in the Logan Village Local Plan.</p>		Complete	Policy	<p>Lead: ED&CP</p> <p>Support: DA</p>
<p>19 Advocate for change in Logan Plan 2025</p> <p>Investigate in more detail the expansion of the local plan boundary to include the properties adjoining the Logan River between Anzac Avenue and North Street and surrounds, the properties up to Manuka Road, properties north of Quinzech Creek Road.</p> <p>Ensure that the revised Logan Village Local Plan as part of Logan Plan 2025 aligns and complements the place making and urban design priorities for the centre.</p>		Medium term	Policy	<p>Lead: ED&CP</p> <p>Support: DA</p>
<p>20 ✓ Provide incentives for development of short-term accommodation, retail, restaurants, coffee shops and RV Park</p> <p>Explore additional opportunities and land uses that can benefit from the deferral of levied charges for development within the Village, Centre Core and Centre Frame precincts as identified in the Logan Village Local Plan.</p>		Short term	Policy	<p>Lead: ED&CP</p>
<p>21 ✓ Prepare a precinct master plan for the Village Green precinct</p> <p>Work with affected landowners, user groups, community groups and local businesses to update the Logan Village Green Master Plan to facilitate the upgrading and/or expansions, activation and embellishment of the Village Green inclusive of resolving the Village Green Main Street, relocated skate park and upgraded playground.</p> <p>The Village Green Master Plan was endorsed by Council in 2020.</p>		Complete	Project	<p>Lead: ED&CP</p> <p>Support: Parks, RIP, SCI, Businesses, Community Groups</p>

✓ Summit outcome



03 Connected



Note: Some number locations are general only and not intended to indicate specific areas.

03 CONNECTED				
Actions		Timing	Type	Stakeholders
22	<p>Parking Strategy for the activity centre core</p> <p>Delivery of an updated parking plan that will summarise both existing and proposed car parking options inclusive of detailed information regarding revised time restrictions through the Logan Village Parking Strategy.</p>	Short term	Project	<p>Lead: ED&CP</p> <p>Support: RIP, Businesses and Community</p>
23	<p>✓ Shared pathway connection with My Home and the River Estate</p> <p>Facilitate the delivery of a pedestrian connection inclusive of lighting and directional signage. The route of the walkway and the design of signage and facilities should reflect a rural, village and heritage character, and the proximity to the river. Delivery of the walkway should include the various local community organisations so that the walkway represents a sense of community.</p> <p>The Logan Village Riverlink was completed in 2021.</p>	Complete	Project	<p>Lead: ED&CP</p> <p>Support: Parks, RIP, HEW</p>
24	<p>✓ Upgrade the disused Quinzech Creek bridge</p> <p>Investigate the potential to use the disused Quinzech Creek bridge for a pedestrian connection/horse riding.</p>	Short to medium term	Project	<p>Lead: RID</p> <p>Support: ED&CP, RIP, HEW</p>
25	<p>Deliver an active transport link between Yarrabilba and Logan Village on the disused spur line</p> <p>Investigate the delivery of an active transport (walking and cycling) link between Yarrabilba and Logan Village along the disused rail spur line as part of a greater tourism active transport trail or rail trail for the region.</p> <p>Project was delivered in December 2021.</p>	Complete	Policy	<p>Lead: ED&CP</p> <p>Support: RIP, Parks, AV, Community groups, DTMR, QR, Lendlease</p>
26	<p>Advocate for Logan Village to become key node in the rail trail infrastructure of the region</p> <p>Advocate for future rail trail connections to be provided in a manner that activates the centre of Logan Village, enhances its character and establishes it as key node in regional rail trails.</p> <p>Efforts to include advocating for Logan Village in the planning and delivery of the Logan Village to Bethania connection and potentially in the future a Logan Village to Jimboomba connection.</p> <p>Explore opportunities for future rail trail projects to be a catalyst for the delivery of the Village Green Main Street. Ensure that the future rail trails create safe, practical and attractive routes that enhance the character of Logan Village.</p>	Short term	Project	<p>Lead: RID</p> <p>Support: ED&CP, RIP, TMR, Parks, Community Groups</p>
27	<p>✓ Public Transportation Strategy</p> <p>Work with DTMR and QR on a future strategy to provide public transport to Logan Village and the surrounding area through the establishment of high occupancy transport lanes; provision of new services to link Logan Village to the rest of Logan; and future development in Yarrabilba.</p>	Medium term	Project	<p>Lead: RIP</p> <p>Support: ED&CP, CECE, RID, AV, Businesses and Community, DTMR</p>

✓ Summit outcome

Implementation Plan

03 CONNECTED				
Actions	Timing	Type	Stakeholders	
<p>28 Design and deliver the new Village Green Main Street</p> <p>✓ Design and deliver the new Village Green Main Street that provides a pedestrian and cycle link between North, Wharf and Logan Streets as part of the detailed design of the Logan Village to Bethania Rail Trail.</p> <p>The new Main Street will include street planting and water sensitive urban design; pedestrian lighting; street furniture; soft and hardscape landscaping; improved access; and the integration of pedestrian movement and cycling infrastructure. Explore opportunities for the new Village Green Main Street to link existing and proposal rail trail connections.</p> <p>Design the new Village Green Main Street with input from the local community, user groups, adjoining landowners and DTMR.</p>	Short to medium term	Project	<p>Lead: RID</p> <p>Support: ED&CP, DA, Parks, SCI, LCI, SCI, Landowners and Community</p>	
<p>29 Upgrade of Waterford-Tamborine Road</p> <p>✓ Advocate for the completion of the ultimate design for the upgrade of Waterford -Tamborine Road with the following key considerations to be included in the design of the future road upgrades:</p> <p>a) Mitigate the impact of Waterford-Tamborine Road on adjacent properties (sound barriers). Improve access to businesses from Waterford-Tamborine Road and advocate for a design that will ensure that local business are not negatively impacted by future upgrades of the Waterford-Tamborine Road.</p> <p>b) Preserve the railway corridor and advocate for retaining the railway corridor in the design of the future upgrades of Waterford-Tamborine Road.</p> <p>c) Provide safe off-road shared pathways / cycleways along Waterford-Tamborine Road. Advocate for the inclusion of dedicated off-road or other cycleways along the future alignment of Waterford-Tamborine Road.</p> <p>d) Improve road access to Logan Village from Waterford-Tamborine Road.</p> <p>e) Advocate for safe, efficient and attractive crossing points for pedestrians and cyclists.</p>	Ongoing	Project	<p>Lead: DTMR</p> <p>Support: ED&CP, RIP, RID, HEW, Lendlease</p>	
<p>30 Deliver a new active shared transport link along the Logan River</p> <p>✓ Deliver a shared active transport link to provide access to the river inclusive of planting and water sensitive urban design; improved legibility, integration of cycle ways; pedestrian lighting; CCTV cameras, public art and street furniture; hardscape and landscaping.</p>	Medium to long term	Project	<p>Lead: ED&CP</p> <p>Support: Parks, SCI, RIP, DA, HEW</p>	
<p>31 New access road connecting North Street to Manuka Road</p> <p>✓ Enhance pedestrian connectivity and overall vehicular circulation with a new access road inclusive of street planting and water sensitive urban design; pedestrian lighting; street furniture; soft and hardscape landscaping; improved vehicle access; and the integration pedestrian and cycling infrastructure.</p>	Medium term	Project	<p>Lead: RID</p> <p>Support: ED&CP, DA, RIP, CECE, SCI Landowners</p>	

✓ Summit outcome

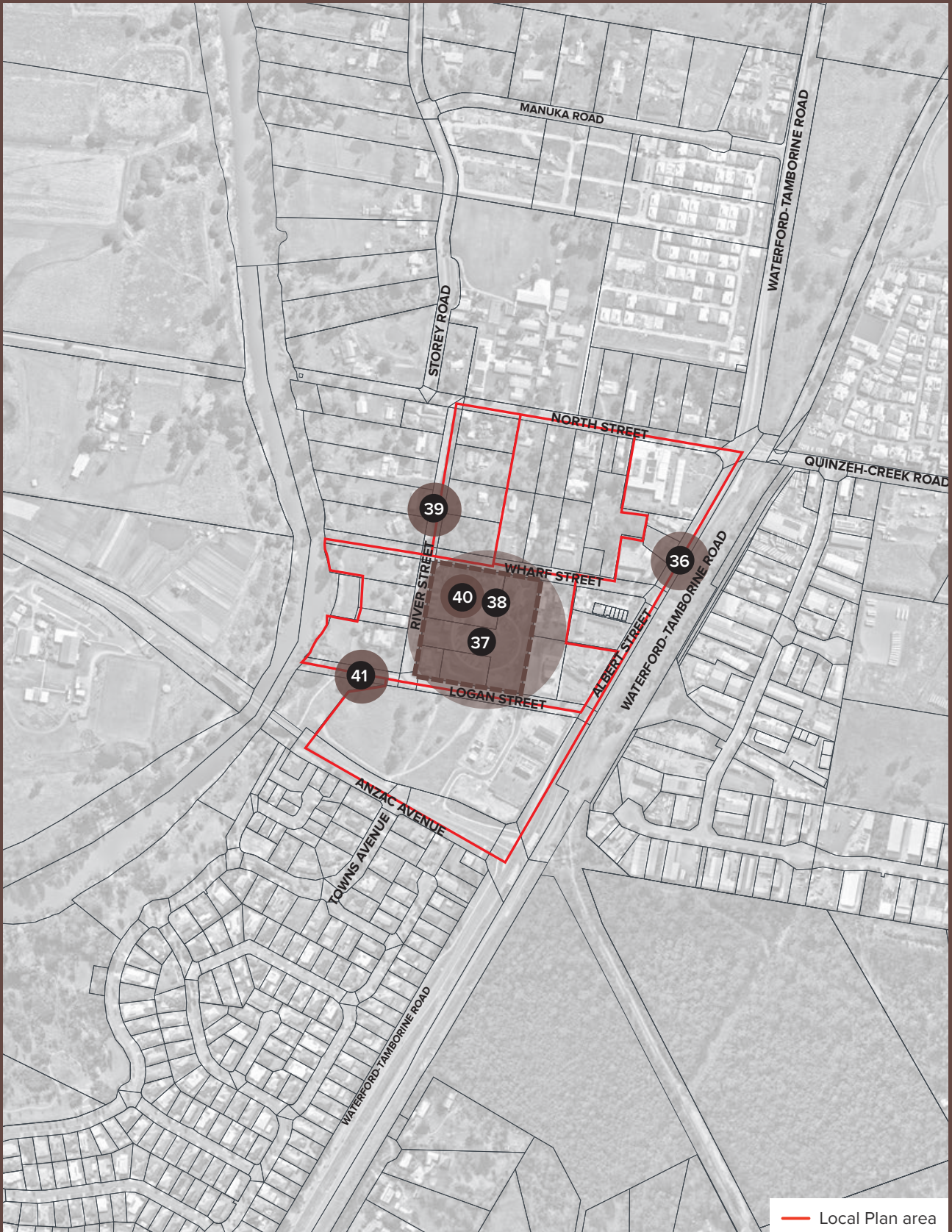
03 CONNECTED

Actions	Timing	Type	Stakeholders
<p>32 Extension of Manuka Road</p> <p>Link Manuka Road to Waterford-Tamborine Road to improve overall vehicular circulation through a proposed signalised intersection. Extension of Manuka Road to the Waterford Tamborine Road was delivered in mid 2021.</p>	Complete	Project	<p>Lead: DA</p> <p>Support: ED&CP, RIP, CECE, Landowners</p>
<p>33 Extension of River Street</p> <p>Link River Street to Towns Avenue to improve pedestrian connectivity to the Village Green inclusive of street planting and water sensitive urban design; pedestrian lighting; street furniture; soft landscaping; improved vehicle circulation; and the integration of pedestrian and cycling infrastructure.</p>	Medium term	Project	<p>Lead: RID</p> <p>Support: ED&CP, DA, RIP, HEW, CECE, Landowners</p>
<p>34 Upgrade of Anzac Avenue</p> <p>✓ Upgrade Anzac Avenue to a four-lane dual carriageway in order to accommodate for the increased traffic volumes from the future development of Yarrabilba inclusive of the Logan City Street Landscape Strategy. Upgrades to consider the treatment of retention structures and should accommodated pedestrian connectivity along and across Anzac Avenue.</p>	Medium term	Project	<p>Lead: RID</p> <p>Support: ED&CP, RIP, HEW, DTMR, Businesses and Community</p>
<p>35 Signalised intersection at Waterford-Tamborine Road and Quinzeh Creek Road</p> <p>✓ Advocate for the upgrade of the intersection to a signalised intersection inclusive of the development of a slip lane into Opal Gardens from Quinzeh-Creek Road to alleviate congestion and improve road safety.</p> <p>This work was completed in 2021.</p>	Complete	Project	<p>Lead: DTMR</p> <p>Support: ED&CP, CECE, RIP, RID, AV, Community</p>

✓ Summit outcome



04 Resilient



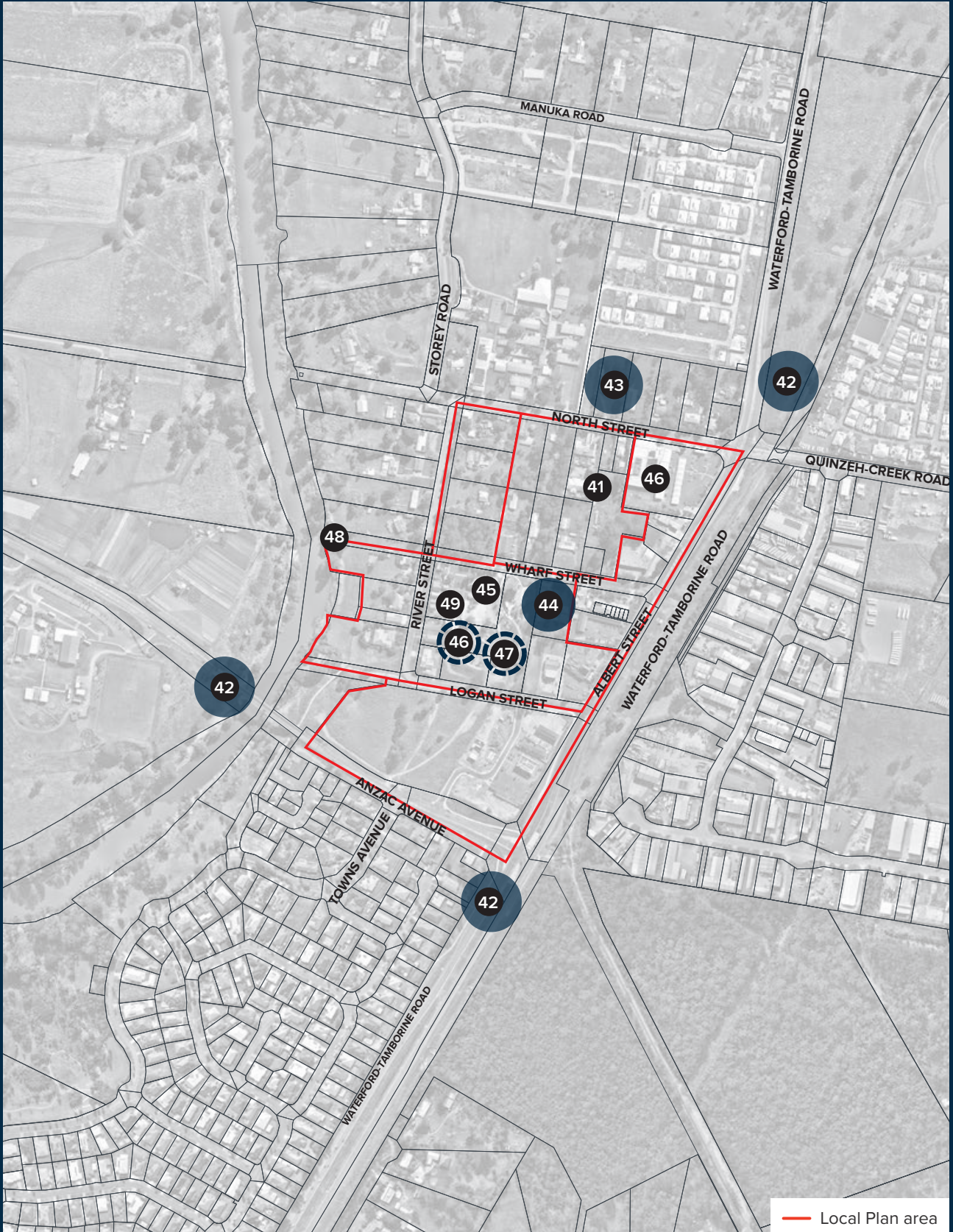
Note: Some number locations are general only and not intended to indicate specific areas.

04 RESILIENT

Actions	Timing	Type	Stakeholders
<p>36 Advocate for Green Building Technology</p> <p>Explore opportunities to integrate Green Building Technology within Logan Village to reduce external energy demands and optimise adaptability to future challenges. Ensure all public works within the centre incorporate Green Building concepts to demonstrate Council's commitment to carbon neutral operations. Investigate opportunities to incentivise the private sector to integrate Green Building concepts.</p>	Ongoing	Policy	<p>Lead: HEW</p> <p>Support: ED&CP, SCI, DA, Businesses and Community</p>
<p>37 Digital connectivity inclusive of free Wi-Fi to the Village Green</p> <p>✓ Deliver free Wi-Fi to key public spaces such as the Village Green and in future the Logan River precinct.</p> <p>Free Wi-Fi on the Village Green was delivered in 2019.</p>	Complete	Project	<p>Lead: ED&CP</p> <p>Support: CC, SCI, Businesses and Community</p>
<p>38 Retail and Business Attraction Strategy</p> <p>✓ Deliver a greater variety of business and tourism focused activities to attract new investments into the centre.</p> <p>Investigate a suitable site and the feasibility of the development of an Eat Street style food precinct with markets to capitalise on the tourist market and attract new business and retail opportunities to Logan Village. Create a café and restaurant precinct. Develop a strategy to attract suitable businesses to create a café and restaurant precinct inclusive of providing incentives to attract these uses to Logan Village.</p> <p>Attract new businesses to Logan Village to facilitate the establishment of a greater variety of shops and businesses in the centre. Attract new investments into the centre inclusive of events that activate the centre at night and include land uses such as speciality retail, cafes, restaurants and hotels.</p>	Short to medium term	Program	<p>Lead: ED&CP</p> <p>Support: Businesses and Community</p>
<p>39 Incentivise the early delivery of placemaking catalyst projects</p> <p>Stimulate private investment and employment opportunities through incentivising key developments and landmark buildings.</p>	Ongoing	Program	<p>Lead: ED&CP</p> <p>Support: Businesses and Community</p>
<p>40 Establish the Logan Village Advisory Group</p> <p>✓ Establish a Logan Village Advisory Group to represent the community, local businesses, local artists and property owners in the implementation of projects funded from the Logan Village Implementation Fund.</p> <p>The Logan Village Advisory Group was established in 2018.</p>	Complete	Program	<p>Lead: ED&CP</p>
<p>41 Flood Resilience Strategy</p> <p>Investigate the need for a flood resilience strategy that would seek to identify key actions and tasks to help Logan Village adapt to future flood challenges.</p>	Medium term	Policy	<p>Lead: RIP, HEW, ED&CP</p>

✓ Summit outcome

05 Distinctive



Note: Some number locations are general only and not intended to indicate specific areas.

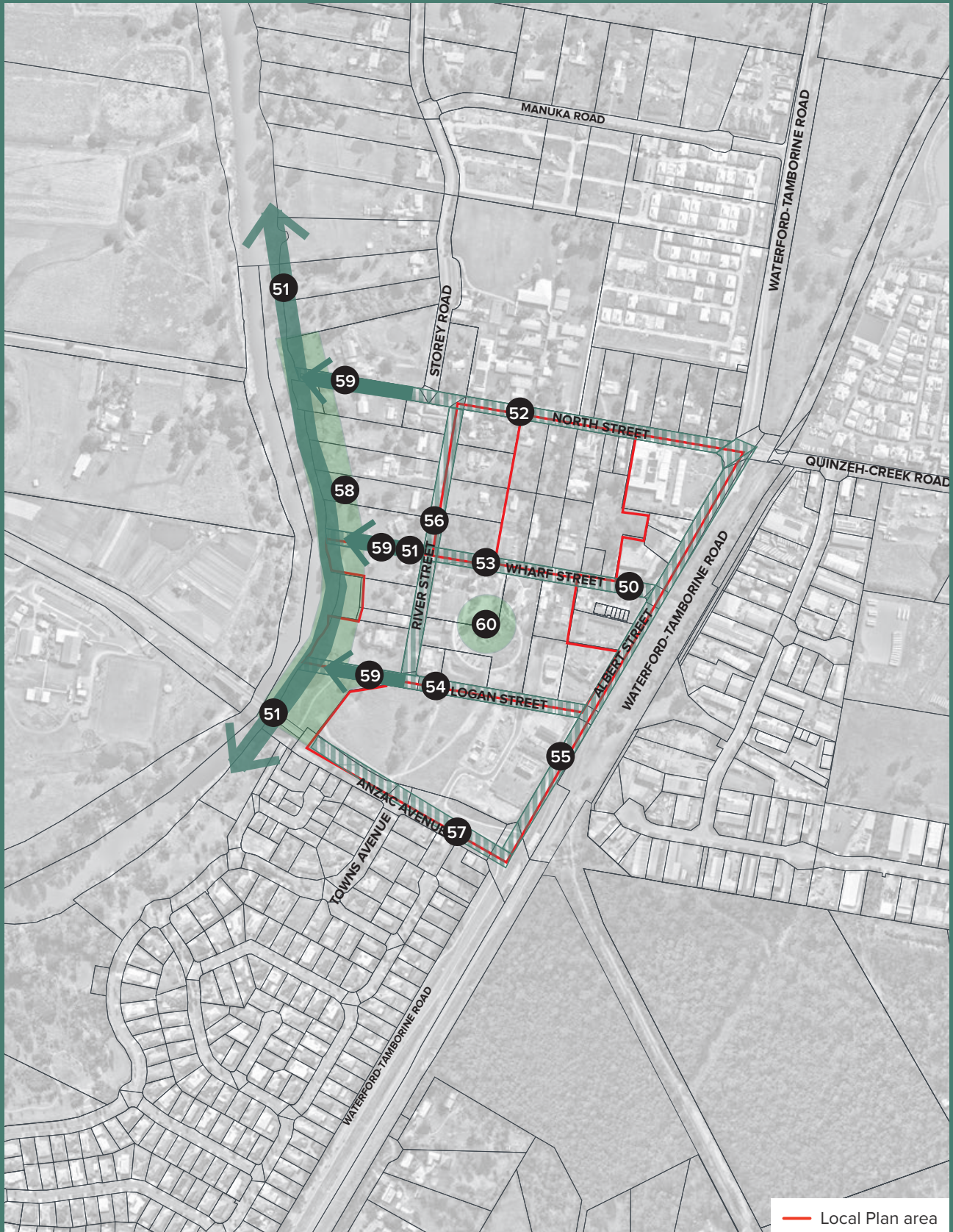
05 DISTINCTIVE

Actions	Timing	Type	Stakeholders
<p>42 ✓ Design and implement welcome and entry statements to Logan Village</p> <p>Design welcome and entry statements to Logan Village that demonstrate the heritage character of Logan Village. The setting and design of the signage should reflect a rural village and heritage character, and the proximity to (and activities on) the river. The design and content of the signage should involve the local community organisations and proudly display them. The design and content of the signage should welcome visitors and new business.</p>	Short term	Project	Lead: CC Support: ED&CP, Parks, HEW, Community
<p>43 Community Art Gallery</p> <p>Investigate the potential to deliver an art gallery that showcases local artworks from both the local school and broader community to create a sense of belonging and social inclusion. Built form should include sustainability elements consistent with Council's priorities.</p>	Long term	Project	Lead: SC Support: LCI, ED&CP, Parks, CC, Businesses and Community
<p>44 ✓ Develop a suite of wayfinding signage for Logan Village</p> <p>a) Design wayfinding and directional signage inclusive of signage, key entry statements and directional and information signs promoting key facilities within Logan Village.</p> <p>b) Deliver signage in accordance with the approved signage packages.</p> <p>Logan Village Signage suite was produced in 2021 and has informed the delivery of several signage packages.</p>	a) Complete b) Short term	Project	Lead: ED&CP Support: Parks, RIP, CC
<p>45 ✓ Deliver a Place Branding Strategy for Logan Village</p> <p>Undertake a place branding, strategic marketing, engagement and media strategy for the centre that will define Logan Village as a key tourist destination into the future, promote a positive image and guide cohesive stakeholder engagement.</p> <p>The Logan Village Place Branding Strategy was completed in 2022.</p>	Complete	Project	Lead: ED&CP Support: CC
<p>46 ✓ Develop a strategy to retain the rural character and reflect the rich heritage of the Village</p> <p>Develop a strategy that includes a set of design guidelines in line with the place branding to shape efforts related to the retention of the rural and heritage character of Logan Village.</p>	Short term	Policy	Lead: ED&CP Support: DA, Parks
<p>47 ✓ Deliver a targeted marketing campaign for Logan Village</p> <p>Deliver a strategic marketing, engagement and media campaign for the centre to identify opportunities to attract investment into Logan Village as a key tourist destination into the future, promote a positive image and guide cohesive stakeholder engagement.</p>	Short term	Program	Lead: ED&CP Support: CC
<p>48 Investigate opportunities to revitalise heritage features</p> <p>Investigate opportunities to reuse features such as the Old Wharf or rail line to reflect the rich heritage of the centre and stimulate economic activity through unique and distinctive tourism related activities.</p>	Short to medium term	Project	Lead: ED&CP Support: CC
<p>49 Upgrade the heritage courtyard on Logan Village Green</p> <p>Complete upgrade works to the heritage courtyard in keeping with the Logan Village Green Master Plan. Proposed works should include new seating and improved landscaping to enhance the amenity of the space.</p>	Short term	Project	Lead: ED&CP Support: Parks

✓ Summit outcome



06 Embracing nature



Note: Some number locations are general only and not intended to indicate specific areas.

06 EMBRACING NATURE

Actions	Timing	Type	Stakeholders
50 ✓ Logan Village Streetscape Master Plan Prepare an overall streetscape master plan with improved streetscape enhancements, on-street parking, landscaping and cycle amenity along North, Wharf, Logan, Albert, River Streets and Anzac Avenue. The masterplan should provide guidance on soft landscaping; additional shade trees/planting and shade structures (temporary and permanent); public art; street furniture and seating.	Short term	Project	Lead: ED&CP Support: Parks, RIP, RID, SCI, Businesses
51 ✓ Green link/boardwalk along the Logan River Design and deliver a shared pathway/boardwalk along the Logan River inclusive of: improved legibility; outdoor dining; smart street and pedestrian lighting; CCTV cameras; public art and street furniture; and landscaping. Proposals to sensitively respond to environmental considerations including riparian rehabilitation.	Short to medium term	Project	Lead: ED&CP Support: Parks, RIP, HEW, RID, SCI, Businesses
52 ✓ Streetscape enhancements and activation of North Street Create a green link with the Logan River through streetscape enhancements inclusive of street planting and water sensitive urban design; improved legibility, integration of dedicated cycle lanes; outdoor dining, smart street and pedestrian lighting; CCTV cameras, public art and street furniture; and hardscape landscaping.	Short to medium term	Project	Lead: ED&CP Support: Parks, RIP, RID, SCI, Businesses
53 ✓ Streetscape enhancements and activation of Wharf Street Create green links through streetscape enhancements inclusive of: street planting and water sensitive urban design; improved legibility; integration of dedicated cycle lanes; outdoor dining; smart street and pedestrian lighting; CCTV cameras; public art and street furniture; and hardscape landscaping.	Short to medium term	Project	Lead: ED&CP Support: Parks, RIP, RID, SCI, Businesses
54 ✓ Streetscape enhancements and activation of Logan Street Create a green link with the Logan River through streetscape enhancements inclusive of: street planting and water sensitive urban design; improved legibility; integration of dedicated cycle lanes; outdoor dining; smart street and pedestrian lighting; CCTV cameras; public art and street furniture; and hardscape landscaping.	Short to medium term	Project	Lead: ED&CP Support: Parks, RIP, RID, SCI, Businesses
55 ✓ Streetscape enhancements and activation of Albert Street In partnership with DTMR implement streetscape enhancements inclusive of street planting and water sensitive urban design; improved legibility, integration of dedicated cycle lanes; outdoor dining, smart street and pedestrian lighting; CCTV cameras, public art and street furniture; and hardscape landscaping.	Medium term	Project	Lead: ED&CP Support: Parks, RIP, RID, SCI, Businesses
56 ✓ Streetscape enhancements and activation of River Street Create green links through streetscape enhancements inclusive of: street planting and water sensitive urban design; improved legibility; integration of dedicated cycle lanes; outdoor dining; smart street and pedestrian lighting; CCTV cameras; public art and street furniture; and hardscape landscaping.	Short to medium term	Project	Lead: ED&CP Support: Parks, RIP, RID, SCI, Businesses

✓ Summit outcome

Implementation Plan

06 EMBRACING NATURE				
Actions		Timing	Type	Stakeholders
57 ✓ Streetscape enhancements and activation of Anzac Avenue Create green links through streetscape enhancements inclusive of: street planting and water sensitive urban design; improved legibility; integration of dedicated cycle lanes; outdoor dining; smart street and pedestrian lighting; CCTV cameras; public art and street furniture; and hardscape landscaping.		Medium term	Project	Lead: RID Support: ED&CP, Parks, RIP, SCI, Businesses
58 ✓ Upgrade the Logan River precinct Provide access to and activate the Logan River, inclusive of footpaths and cycle paths, lighting installations, improved street lighting, and public art. Provide amenities to the Logan River Precinct, inclusive of upgraded street furniture, canoe/kayak access, fish cleaning station, play equipment, viewing platforms and shade structures. Proposals to sensitively respond to environmental considerations including riparian rehabilitation.		Medium to long term	Project	Lead: ED&CP Support: HEW, Parks
59 ✓ Re-establish access to the Logan River Provide access or visual connections to the river from Wharf Street, Logan Street and North Street – in line with the Logan River Vision Strategy.		Medium term	Project	Lead: HEW Support: ED&CP, Parks
60 Upgrade the Logan Village Green events space As per the Logan Village Green Master Plan the upgrade of the overall drainage and lighting for the Logan Village Green will contribute towards the creation of an event space and facilitate the activation of the space. Upgrades to the Village green include new turf, lighting, the completion of the circular walkway, landscaping inclusive of the trees to complete the avenue of honour, signage and installation of car parking and a new basketball court.		Complete	Project	Lead: ED&CP Support: Parks, Community Groups

✓ Summit outcome



 logan.qld.gov.au

