

Rail Trail Landscape

Landscape
Multiple suburb

CONCEPT PLAN

0 50 100 150M
SCALE 1:2500 @ A3



DISCLAIMER: "THIS CONCEPT IS A VISION FOR THE FUTURE EMBELLISHMENT OF THE RAIL TRAIL. IT PROVIDES A CONCEPT IN ACCORDANCE WITH IDENTIFIED NEEDS FOR THE SITE. ADOPTION OF THE STAGING PLAN BY COUNCIL DOES NOT CONSTITUTE A DECISION TO PROCEED WITH ALL IDENTIFIED OPPORTUNITIES, WHICH WILL BE SUBJECT TO FUTURE DECISIONS AND FUNDING CONSIDERATIONS BY COUNCIL".



CITY OF
LOGAN

Planting

Tree



Corymbia ficifolia
'Summer Red'
Red Flowering Gum



Angophora costata
Sydney Red Gum

Garden plant



Grevillea 'Fanfare'
Grevillea



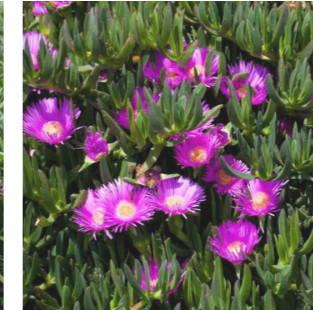
Lomandra fluviatilis 'Shara'
Spiny-head Mat-rush



Hymenocallis littoralis
Spider Lily



Liriope muscari
Lily Turf



Carpobrotus glaucescens
Pig Face

Yarning Circle



Rail Trail Landscape

Landscape
Multiple suburb

CONCEPT IMAGERY

DISCLAIMER: "THIS CONCEPT IS A VISION FOR THE FUTURE EMBELLISHMENT OF THE RAIL TRAIL. IT PROVIDES A CONCEPT IN ACCORDANCE WITH IDENTIFIED NEEDS FOR THE SITE. ADOPTION OF THE STAGING PLAN BY COUNCIL DOES NOT CONSTITUTE A DECISION TO PROCEED WITH ALL IDENTIFIED OPPORTUNITIES, WHICH WILL BE SUBJECT TO FUTURE DECISIONS AND FUNDING CONSIDERATIONS BY COUNCIL".

Landscape design



Rail Trail Landscape

Landscape
Multiple suburb

CONCEPT IMAGERY

DISCLAIMER: "THIS CONCEPT IS A VISION FOR THE FUTURE EMBELLISHMENT OF THE RAIL TRAIL. IT PROVIDES A CONCEPT IN ACCORDANCE WITH IDENTIFIED NEEDS FOR THE SITE. ADOPTION OF THE STAGING PLAN BY COUNCIL DOES NOT CONSTITUTE A DECISION TO PROCEED WITH ALL IDENTIFIED OPPORTUNITIES, WHICH WILL BE SUBJECT TO FUTURE DECISIONS AND FUNDING CONSIDERATIONS BY COUNCIL".

Furniture



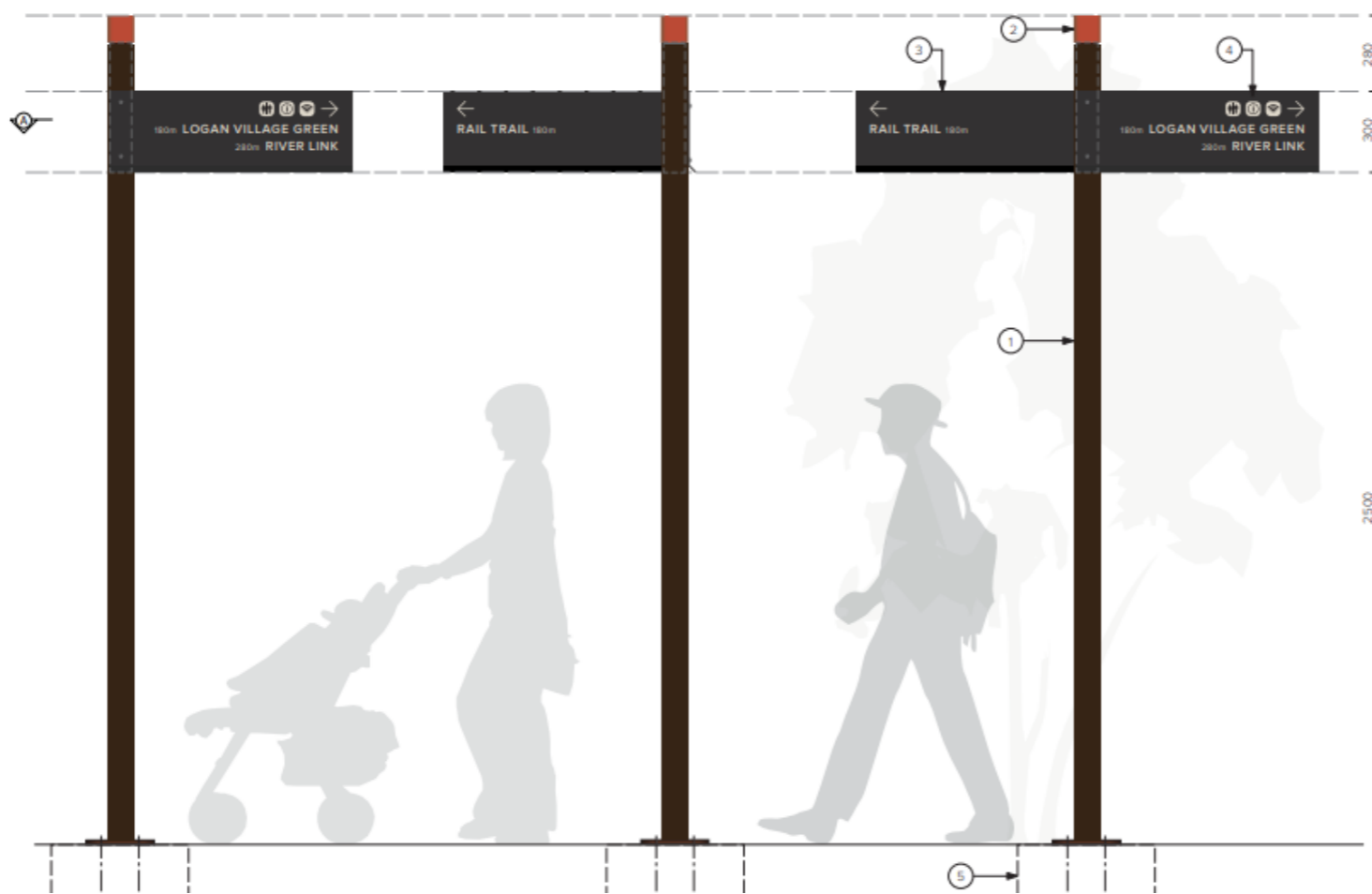
Picnic setting and shelter



Bins



Identification sign



Directional finger sign



Interpretive sign



Directional sign



Information Totem

Rail Trail Landscape

Landscape
Multiple suburb

CONCEPT IMAGERY

DISCLAIMER: "THIS CONCEPT IS A VISION FOR THE FUTURE EMBELLISHMENT OF THE RAIL TRAIL. IT PROVIDES A CONCEPT IN ACCORDANCE WITH IDENTIFIED NEEDS FOR THE SITE. ADOPTION OF THE STAGING PLAN BY COUNCIL DOES NOT CONSTITUTE A DECISION TO PROCEED WITH ALL IDENTIFIED OPPORTUNITIES, WHICH WILL BE SUBJECT TO FUTURE DECISIONS AND FUNDING CONSIDERATIONS BY COUNCIL".

Bethania Station



Legend

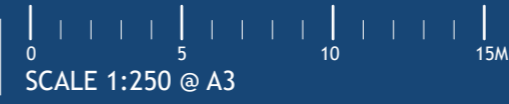
- 01 New painting on trail
- 02 New garden bed
- 03 New bike parking
- 04 New shelters with picnic setting
- 05 New information totem
- 06 New identification sign
- 07 New recycled timber landscape elements
- 08 New bin with dog waste bag dispenser
- 09 New bike service station
- 10 New directional finger sign

Path connected to Church Road

Rail Trail Landscape

Landscape
Multiple suburb

LANDSCAPE AREA 01



CITY OF
LOGAN

DISCLAIMER: "THIS CONCEPT IS A VISION FOR THE FUTURE EMBELLISHMENT OF THE RAIL TRAIL. IT PROVIDES A CONCEPT IN ACCORDANCE WITH IDENTIFIED NEEDS FOR THE SITE. ADOPTION OF THE STAGING PLAN BY COUNCIL DOES NOT CONSTITUTE A DECISION TO PROCEED WITH ALL IDENTIFIED OPPORTUNITIES, WHICH WILL BE SUBJECT TO FUTURE DECISIONS AND FUNDING CONSIDERATIONS BY COUNCIL".

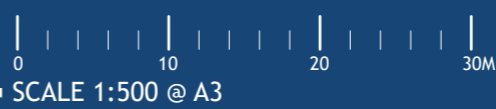


- Legend
- 01 New painting on trail
 - 02 New access control
 - 03 New directional finger sign

Rail Trail Landscape

Landscape
Multiple suburb

LANDSCAPE AREA 02



DISCLAIMER: "THIS CONCEPT IS A VISION FOR THE FUTURE EMBELLISHMENT OF THE RAIL TRAIL. IT PROVIDES A CONCEPT IN ACCORDANCE WITH IDENTIFIED NEEDS FOR THE SITE. ADOPTION OF THE STAGING PLAN BY COUNCIL DOES NOT CONSTITUTE A DECISION TO PROCEED WITH ALL IDENTIFIED OPPORTUNITIES, WHICH WILL BE SUBJECT TO FUTURE DECISIONS AND FUNDING CONSIDERATIONS BY COUNCIL".



Rail Trail Landscape

Landscape
Multiple suburb

LANDSCAPE AREA 03

0 20 40 60 80 100m
SCALE 1:1500 @ A3



DISCLAIMER: "THIS CONCEPT IS A VISION FOR THE FUTURE EMBELLISHMENT OF THE RAIL TRAIL. IT PROVIDES A CONCEPT IN ACCORDANCE WITH IDENTIFIED NEEDS FOR THE SITE. ADOPTION OF THE STAGING PLAN BY COUNCIL DOES NOT CONSTITUTE A DECISION TO PROCEED WITH ALL IDENTIFIED OPPORTUNITIES, WHICH WILL BE SUBJECT TO FUTURE DECISIONS AND FUNDING CONSIDERATIONS BY COUNCIL".



Area 3.1



Area 3.2



Legend

- 01 New garden bed
- 02 New screening planting & fence
- 03 New electric access gate
- 04 New CCTV camera
- 05 New access control
- 06 New path crossing with gate

Area 3.3

Rail Trail Landscape

Landscape
Multiple suburb

Area 3.4

LANDSCAPE AREA 03

SCALE 1:500 @ A3



DISCLAIMER: "THIS CONCEPT IS A VISION FOR THE FUTURE EMBELLISHMENT OF THE RAIL TRAIL. IT PROVIDES A CONCEPT IN ACCORDANCE WITH IDENTIFIED NEEDS FOR THE SITE. ADOPTION OF THE STAGING PLAN BY COUNCIL DOES NOT CONSTITUTE A DECISION TO PROCEED WITH ALL IDENTIFIED OPPORTUNITIES, WHICH WILL BE SUBJECT TO FUTURE DECISIONS AND FUNDING CONSIDERATIONS BY COUNCIL".



- Legend
- 01 New painting on trail
 - 02 New directional finger sign
 - 03 New access control

Rail Trail Landscape

Landscape
Multiple suburb

LANDSCAPE AREA 04



DISCLAIMER: "THIS CONCEPT IS A VISION FOR THE FUTURE EMBELLISHMENT OF THE RAIL TRAIL. IT PROVIDES A CONCEPT IN ACCORDANCE WITH IDENTIFIED NEEDS FOR THE SITE. ADOPTION OF THE STAGING PLAN BY COUNCIL DOES NOT CONSTITUTE A DECISION TO PROCEED WITH ALL IDENTIFIED OPPORTUNITIES, WHICH WILL BE SUBJECT TO FUTURE DECISIONS AND FUNDING CONSIDERATIONS BY COUNCIL".



- Legend
- 01 New garden bed with scening planting
 - 02 New bike parking
 - 03 New shelters with bench seat
 - 04 New interpretive sign
 - 05 New bin with dog waste bag dispenser
 - 06 New fence

Waterford Tamborine Road

Rail Trail Landscape

Landscape
Multiple suburb

LANDSCAPE AREA 05



DISCLAIMER: "THIS CONCEPT IS A VISION FOR THE FUTURE EMBELLISHMENT OF THE RAIL TRAIL. IT PROVIDES A CONCEPT IN ACCORDANCE WITH IDENTIFIED NEEDS FOR THE SITE. ADOPTION OF THE STAGING PLAN BY COUNCIL DOES NOT CONSTITUTE A DECISION TO PROCEED WITH ALL IDENTIFIED OPPORTUNITIES, WHICH WILL BE SUBJECT TO FUTURE DECISIONS AND FUNDING CONSIDERATIONS BY COUNCIL".



- Legend
- 01 New painting on trail
 - 02 New garden bed
 - 03 New access control
 - 04 New directional finger sign

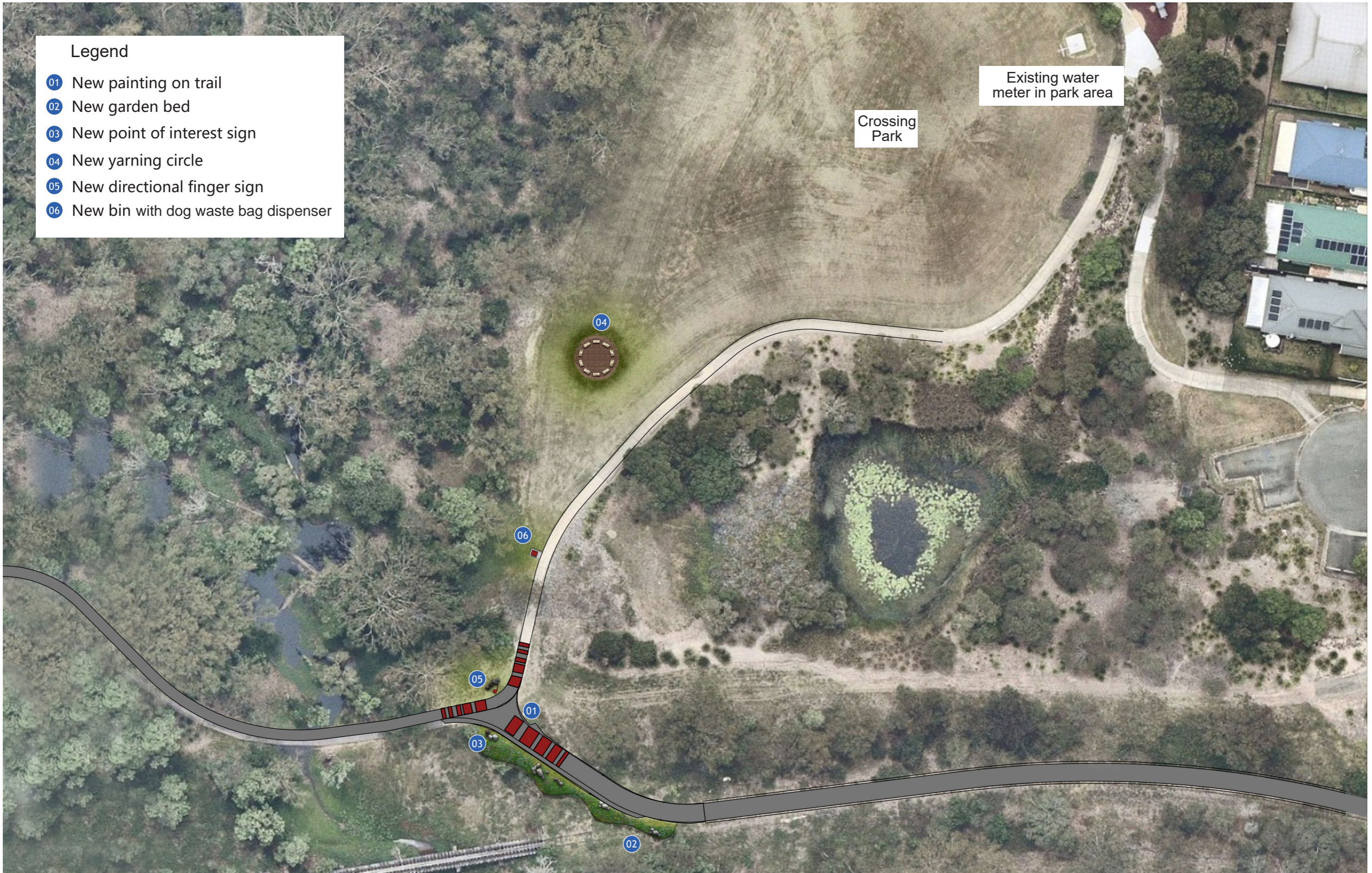
Rail Trail Landscape

Landscape
Multiple suburb

LANDSCAPE AREA 06



DISCLAIMER: "THIS CONCEPT IS A VISION FOR THE FUTURE EMBELLISHMENT OF THE RAIL TRAIL. IT PROVIDES A CONCEPT IN ACCORDANCE WITH IDENTIFIED NEEDS FOR THE SITE. ADOPTION OF THE STAGING PLAN BY COUNCIL DOES NOT CONSTITUTE A DECISION TO PROCEED WITH ALL IDENTIFIED OPPORTUNITIES, WHICH WILL BE SUBJECT TO FUTURE DECISIONS AND FUNDING CONSIDERATIONS BY COUNCIL".



Legend

- 01 New painting on trail
- 02 New garden bed
- 03 New point of interest sign
- 04 New yarning circle
- 05 New directional finger sign
- 06 New bin with dog waste bag dispenser

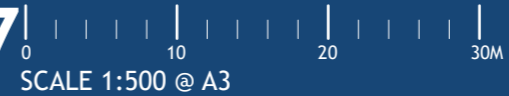
Crossing Park

Existing water meter in park area

Rail Trail Landscape

Landscape
Multiple suburb

LANDSCAPE AREA 07



DISCLAIMER: "THIS CONCEPT IS A VISION FOR THE FUTURE EMBELLISHMENT OF THE RAIL TRAIL. IT PROVIDES A CONCEPT IN ACCORDANCE WITH IDENTIFIED NEEDS FOR THE SITE. ADOPTION OF THE STAGING PLAN BY COUNCIL DOES NOT CONSTITUTE A DECISION TO PROCEED WITH ALL IDENTIFIED OPPORTUNITIES, WHICH WILL BE SUBJECT TO FUTURE DECISIONS AND FUNDING CONSIDERATIONS BY COUNCIL".

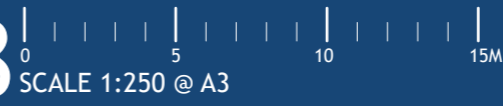


- Legend
- 01 New painting on trail
 - 02 New garden bed
 - 03 New bike parking
 - 04 New shelters with picnic setting
 - 05 New directional finger sign
 - 06 New bin with dog waste bag dispenser
 - 07 New recycled timber landscape elements
 - 08 New bench seat
 - 09 New access control
 - 10 New horse drinking trough
 - 11 New bubbler with dog bowl

Rail Trail Landscape

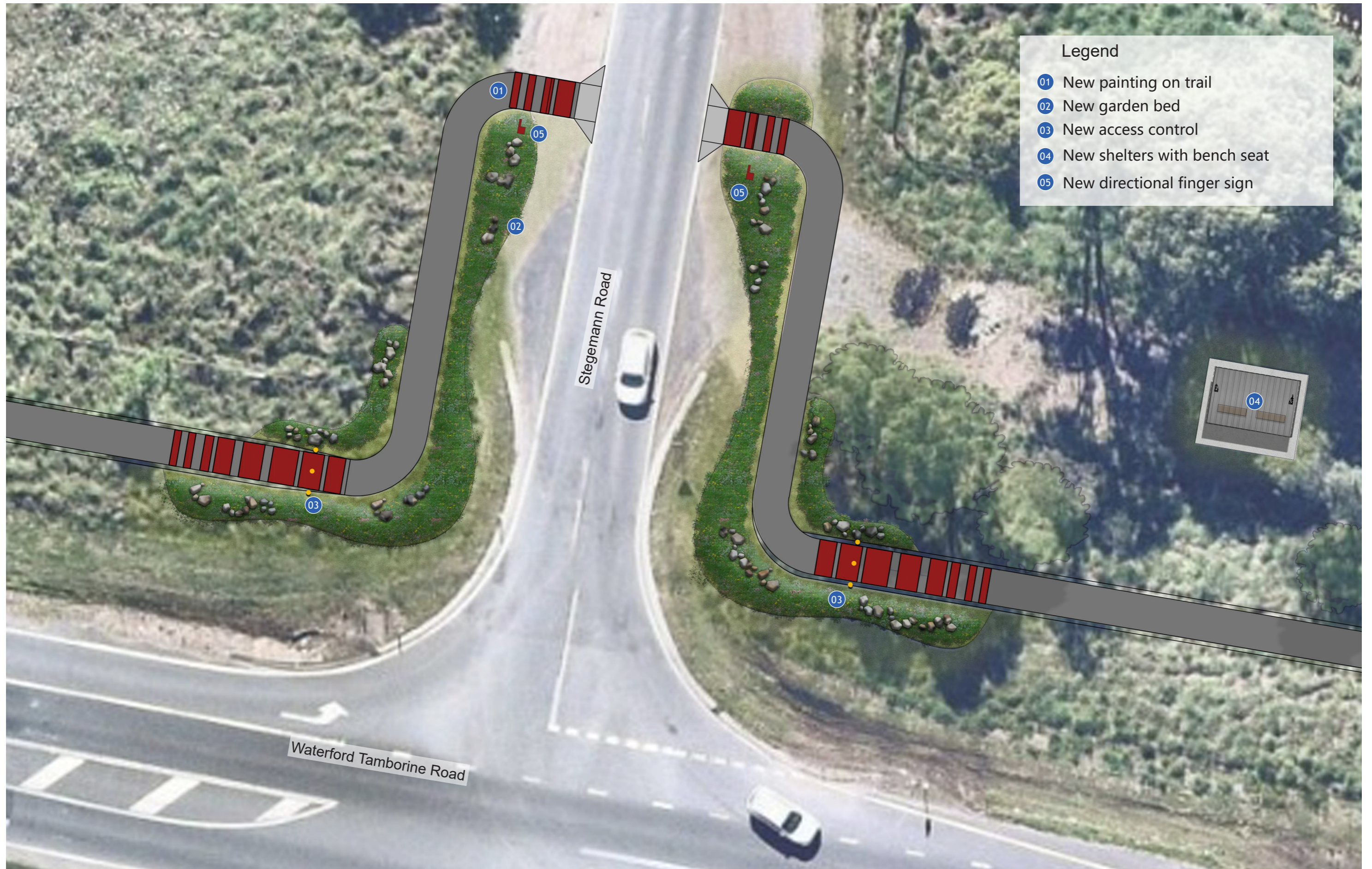
Landscape
Multiple suburb

LANDSCAPE AREA 08



DISCLAIMER: "THIS CONCEPT IS A VISION FOR THE FUTURE EMBELLISHMENT OF THE RAIL TRAIL. IT PROVIDES A CONCEPT IN ACCORDANCE WITH IDENTIFIED NEEDS FOR THE SITE. ADOPTION OF THE STAGING PLAN BY COUNCIL DOES NOT CONSTITUTE A DECISION TO PROCEED WITH ALL IDENTIFIED OPPORTUNITIES, WHICH WILL BE SUBJECT TO FUTURE DECISIONS AND FUNDING CONSIDERATIONS BY COUNCIL".





- Legend**
- 01 New painting on trail
 - 02 New garden bed
 - 03 New access control
 - 04 New shelters with bench seat
 - 05 New directional finger sign

Rail Trail Landscape

Landscape
Multiple suburb

LANDSCAPE AREA 09

0 5 10 15M
SCALE 1:250 @ A3



DISCLAIMER: "THIS CONCEPT IS A VISION FOR THE FUTURE EMBELLISHMENT OF THE RAIL TRAIL. IT PROVIDES A CONCEPT IN ACCORDANCE WITH IDENTIFIED NEEDS FOR THE SITE. ADOPTION OF THE STAGING PLAN BY COUNCIL DOES NOT CONSTITUTE A DECISION TO PROCEED WITH ALL IDENTIFIED OPPORTUNITIES, WHICH WILL BE SUBJECT TO FUTURE DECISIONS AND FUNDING CONSIDERATIONS BY COUNCIL".



CITY OF
LOGAN



- Legend
- 01 New painting on trail
 - 02 New garden bed
 - 03 New directional finger sign
 - 04 New access control
 - 05 New bubbler with dog bowl

Rail Trail Landscape

Landscape
Multiple suburb

LANDSCAPE AREA 10



DISCLAIMER: "THIS CONCEPT IS A VISION FOR THE FUTURE EMBELLISHMENT OF THE RAIL TRAIL. IT PROVIDES A CONCEPT IN ACCORDANCE WITH IDENTIFIED NEEDS FOR THE SITE. ADOPTION OF THE STAGING PLAN BY COUNCIL DOES NOT CONSTITUTE A DECISION TO PROCEED WITH ALL IDENTIFIED OPPORTUNITIES, WHICH WILL BE SUBJECT TO FUTURE DECISIONS AND FUNDING CONSIDERATIONS BY COUNCIL".





Legend

- 01 New painting on trail
- 02 New garden bed
- 03 New bike parking
- 04 New shelters with picnic setting
- 05 New new information totem
- 06 New identification sign
- 07 New recycled timber landscape elements
- 08 New bin with dog waste bag dispenser
- 09 New bike service station
- 10 New directional finger sign

Rail Trail Landscape

Landscape
Multiple suburb

LANDSCAPE AREA 11

0 5 10 15M
SCALE 1:250 @ A3



DISCLAIMER: "THIS CONCEPT IS A VISION FOR THE FUTURE EMBELLISHMENT OF THE RAIL TRAIL. IT PROVIDES A CONCEPT IN ACCORDANCE WITH IDENTIFIED NEEDS FOR THE SITE. ADOPTION OF THE STAGING PLAN BY COUNCIL DOES NOT CONSTITUTE A DECISION TO PROCEED WITH ALL IDENTIFIED OPPORTUNITIES, WHICH WILL BE SUBJECT TO FUTURE DECISIONS AND FUNDING CONSIDERATIONS BY COUNCIL".



CITY OF
LOGAN