

CITY OF LOGAN



**Bethania
to Logan Village
Rail Trail
Community
Engagement
Summary**



Introduction



Logan City Council will soon commence designing the Bethania to Logan Village Rail Trail. This project will transform 10 kms of disused rail corridor spanning from Bethania to Beaudesert into a destination for Logan residents and visitors to enjoy.

The trail will provide a much-needed safe off-road connection from Bethania to the Yarrabilba Rail Trail, connecting the City of Logan.

By extending and improving our off-road connections such as the rail trail, Logan residents will benefit from healthier and green transport options.

To help inform the design on the rail trail Council invited the community to participate in the **'Have Your Say'** survey, opened from 31 August 2022 to 12 October 2022.

This report is a summary of the community feedback provided to Council. We would like to thank all those who took the time to take part in the survey.

Project Details



The 10 km rail trail will seamlessly link with Bethania train station and extend through to Logan Village where it will connect with the recently opened (2021) Logan Village to Yarrabilba Rail Trail.

The rail trail will be built within the publicly owned pre-existing rail corridor from Bethania Station to Logan Village.

The rail trail will improve our off-road connections and provide the residents of Logan with healthier greener transport options.

The Rail Trail will:



increase walking and bike riding opportunities



provide a safe and family friendly environment for bike riding and walking

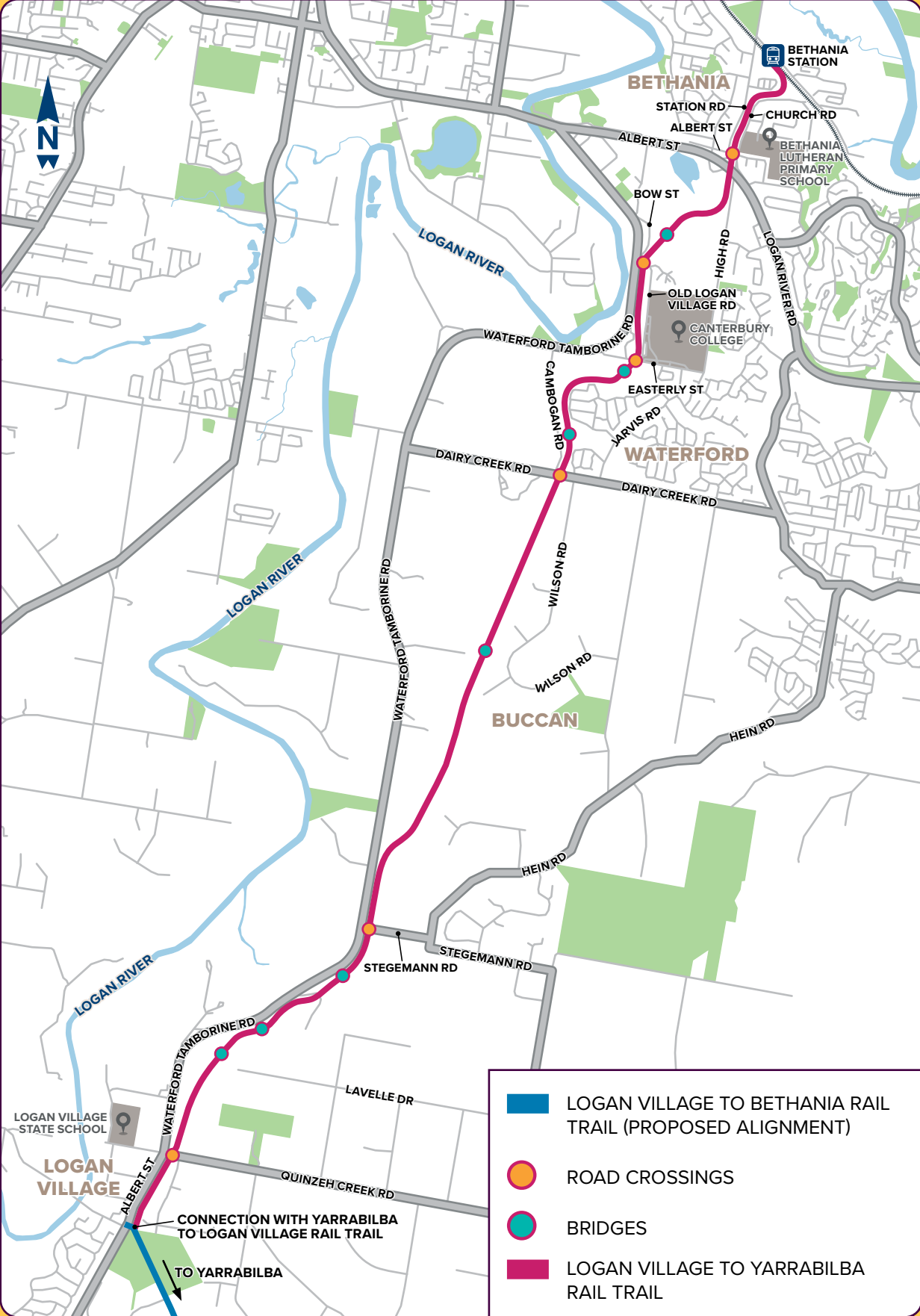


provide more opportunities for car-free journeys across South East Queensland by connecting into the rail network at Bethania Station



boost the local economy by attracting visitors and connecting them with shops, businesses and services along the rail trail

Proposed trail



Have Your Say

The 'Have Your Say' survey was open from **31 August 2022** through to **12 October 2022**.

The survey was distributed by several sources including:



Logan City Council Letter



Social media



Face to face



Radio



Posters



Electronic signs along the road



Email



Online



Newspapers

Respondents were asked the following questions to help Council inform the design of the rail trail:

1. How often do you exercise?
2. Are you part of a club/group that might use the Rail Trail?
3. Do you think you will use the Bethania to Logan Village Rail Trail?
 - I. How might you use the Rail Trail?
 - II. What would make the Rail Trail more appealing to you and encourage you to use it?
4. What matters do you believe are important for consideration in the design of the Rail Trail?
5. Do you have any additional feedback?

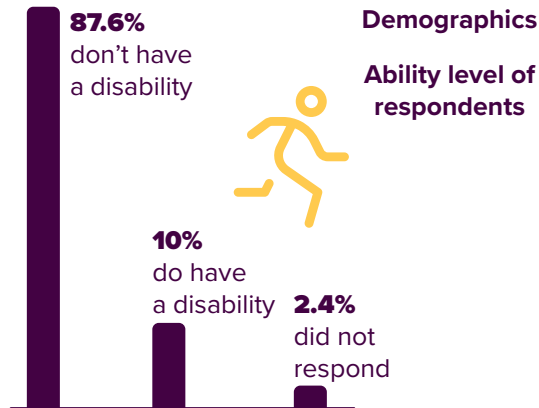
Survey Participation

The project page was visited **6.8k** times

There were **719** forms received (paper and digital)

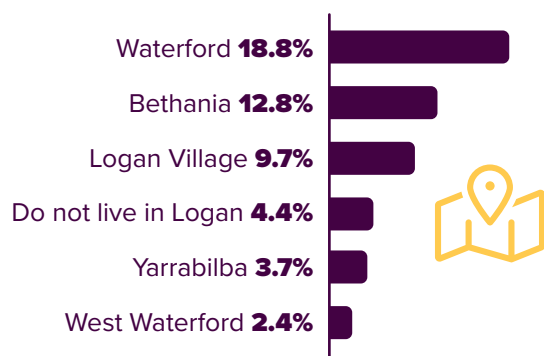
The information documents were downloaded **1.75k** times

Survey Data

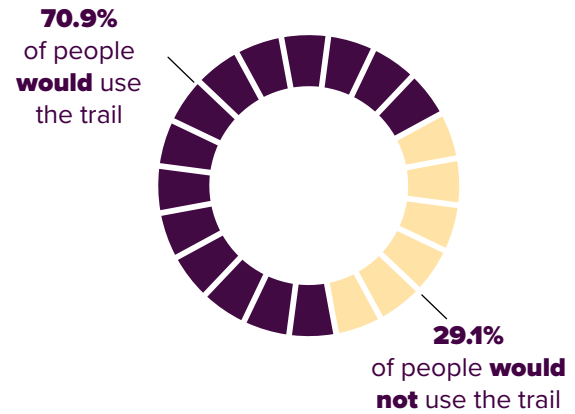


Survey responses were received from residents across various suburbs within Logan.

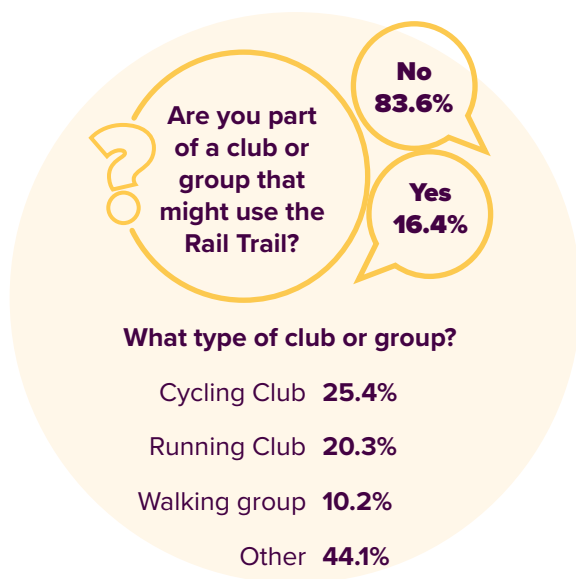
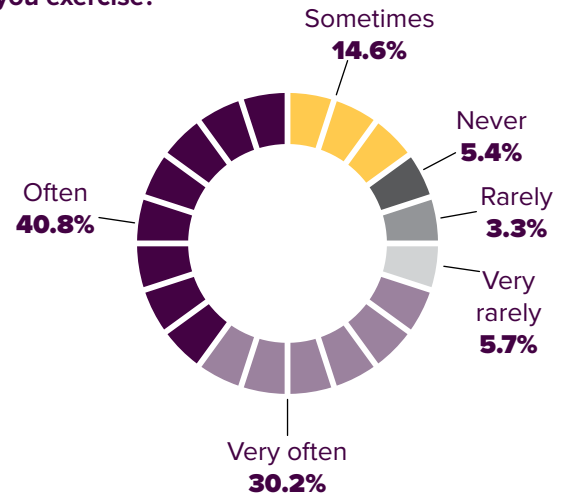
Greatest responses by Location (Suburb)



The majority of respondents said they would use the Rail Trail.

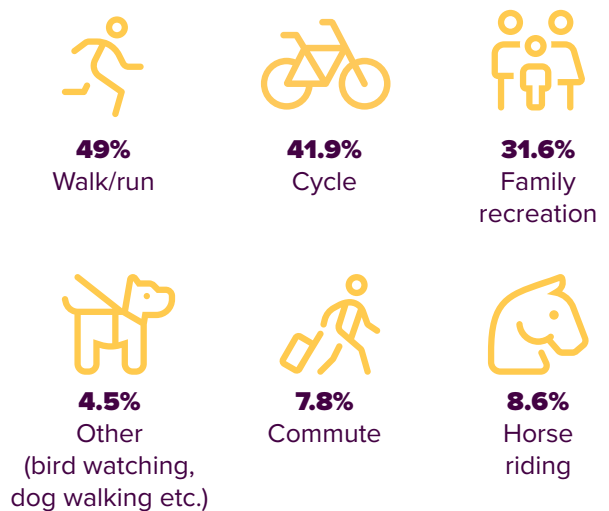


How often do you exercise?



Most of the 'other' responses referred to riding clubs/groups. Other types included fitness groups, churches and hiking groups.

People indicated they would use the Rail Trail for more than one purpose.



What You Told Us



A significant amount of feedback was received. This feedback has been taken onboard by Council and will be carefully considered in the design process moving forward.

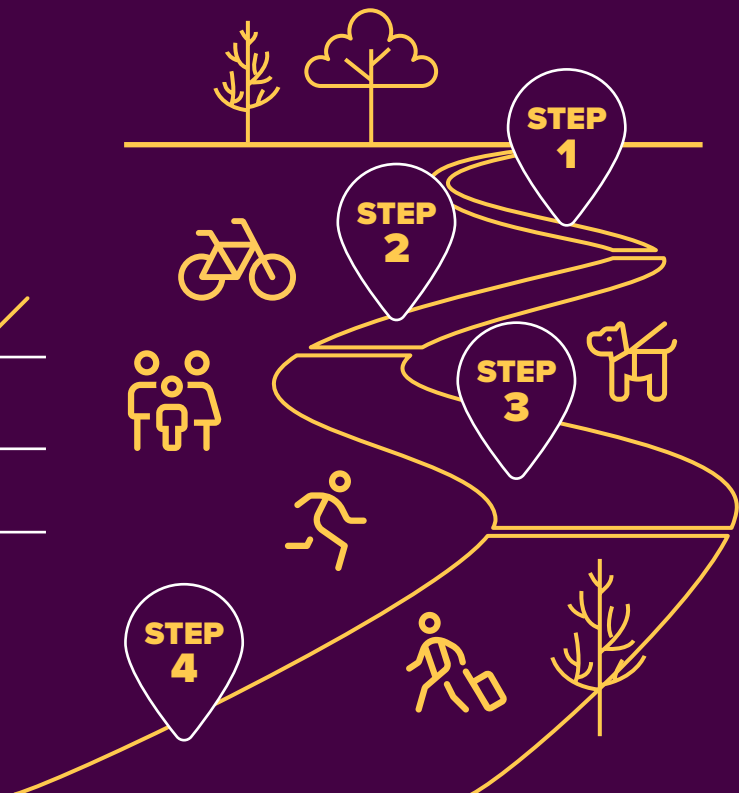
You have asked us to consider these matters when designing the rail trail:

- Safety for all
- Privacy of nearby residents
- Water stations including dog bowls and horse troughs
- Appropriate parking infrastructure
- Shaded seating
- Lights
- Family friendly activities along the way
- Toilets
- Wildlife crossings
- Showcase history, culture and environment (through signage across the trail)
- Accessibility for all users including wheelchairs, cyclists, prams and horses

Project Timeline



STEP 1	Have your say survey	completed	✓
STEP 2	Preliminary design	anticipated mid – 2023	
STEP 3	Detailed design	anticipated end – 2023	
STEP 4	Construction	anticipated 2024	



What is next?




We will now use the feedback provided through the Have Your Say survey to help us inform the design of the rail trail. We will further inform the local community as this project progresses.

You can stay up-to-date with the latest information on this project by visiting our website.

Get in touch



If you have questions for the team or want the latest information, you can contact the team, or visit the project page: logan.qld.gov.au/bethania-logan-village-rail-trail

 (07) 3412 4551

 roadcomms@logan.qld.gov.au

000930

LOGAN CITY COUNCIL

150 Wembley Road, Logan Central

 07 3412 3412 | 1300 1 LOGAN (1300 156 426)

 council@logan.qld.gov.au

 logan.qld.gov.au

