

Bethania to Logan Village rail trail

Community engagement

From 31 August – 12 October 2022, we asked the community to share their thoughts and ideas for the Bethania to Logan Village Rail Trail. Here are the results.

Engagement types

How we spoke to you and gathered your feedback:



Online survey

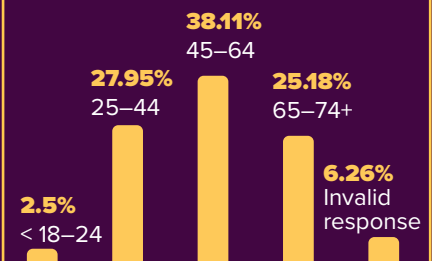
- The project page was visited **6.8k** times
- There were **719** forms received (paper and digital)
- The information documents were downloaded **1.75k** times

Social media presence

- The posts were seen **21,075** times
- The posts were engaged **7,454** times
- The links were followed **2,565** times

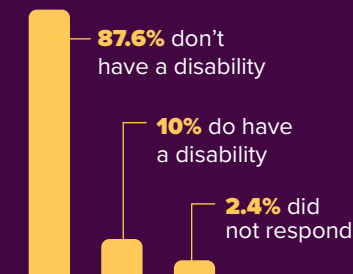
Demographics

Age breakdown of respondents



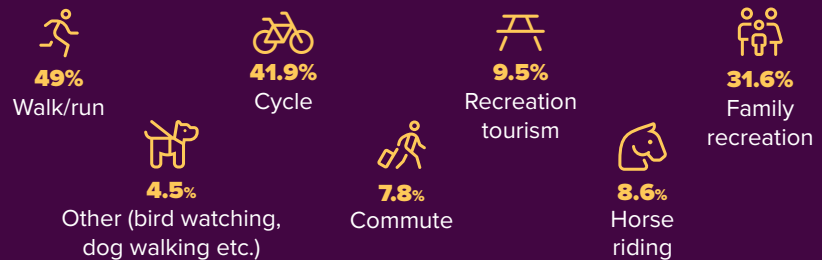
Demographics

Ability level of respondents



What would you use the trail for?

(Option to choose more than one answer)



Where you live

- 12.8%** Bethania
- 2.4%** Waterford West
- 18.8%** Waterford
- 9.7%** Logan Village
- 3.7%** Yarrabilba
- 48.2%** Other Logan locations
- 4.4%** Outside Logan

What you had to say

- 70.9%** of people **would use** the trail
- 29.1%** of people **would not use** the trail

For continued updates on this project and its status, visit: logan.qld.gov.au/bethania-logan-village-rail-trail

