

City of Logan Natural Environment Strategy 2021–2031



Acknowledgement of Country

Council acknowledges the Traditional Custodians of the land, pays respect to Elders past, present and emerging and extends that respect to all Aboriginal and Torres Strait Islander peoples in the City of Logan.



The smoking ceremony is an ancient custom among Indigenous Australians and is believed to ward off bad spirits.

Contents

01	Introduction	5
	1.1 Strategic fit	
	1.2 Policy position	
02	Vision - Where do we want to be?	11
	2.1 Strategic outcomes	
03	Where are we now?	19
	3.1 The City of Logan's natural environment	
	3.2 The City of Logan's plants and animals	
	3.3 The City of Logan's waterways and wetlands	
04	Where are we going?	35
	4.1 Key areas of interest	
05	How are we going to get there?	39
	5.1 Council's plan of action	



01

Introduction

Our City contains an amazing range of natural areas including rainforests, bushland reserves, waterways and wetlands which are home to an incredible diversity of native animals and plants - some so unique and iconic, they are world reknown. Our natural areas are highly valued by our community and form an integral and important part of the identity, cultural history and fabric of our City.

Logan City Council recognises and respects the importance of a thriving natural environment in the growing region and our role in protecting and enhancing nature. We are committed to building on the hard work our community and Council have undertaken to protect and improve our natural environment.

This Strategy outlines our vision, overarching direction and strategic plan of action, driving this important work in partnership with our community.

About Logan City:

949 
PARKS

 LAND AREA OF
959km²

POPULATION OF
341,985 

73.65%
OF THE CITY IS
IDENTIFIED AS RURAL
LIVING, GREEN LIVING,
RECREATION OR
OPEN SPACE





1.1 Strategic fit

The City of Logan's natural environment is a key part of many of Council's strategic plans and policies. The health of our natural environment is essential to the delivery of Logan's City Vision:

*'City of Logan:
a green city full of
pride, opportunity
and culture'*

This vision will drive positive environmental outcomes through the Corporate Plan 2021–2026.

Council recognises the importance of balancing growth and our natural environment while meeting the challenges of a changing climate. Achieving this requires a framework with a suite of innovative, flexible, outcome focused policies and plans to deliver this outcome. Council has strategies and plans in place to protect, manage and enhance the natural environment which respond to local needs and builds climate change resilience. These provide the tools to maximise environmental outcomes and preserve our natural environment for current and future generations to come.

The protection of the natural environment is also required by a range of Federal, State and Council legislation and plans. A summary of these requirements for the natural environment in the City of Logan are provided in Figure 1.

International



United Nations Sustainable Development Goals

National



Australia's Strategy for Nature 2019-2030
Environmental Protection and Biodiversity Conservation Act 1999 (EPBC Act)

State



SEQ Regional Plan and SEQ NRM Plan
State Planning Policies, Nature Conservation Act, Environment Protection Act, Vegetation Management Act, Biosecurity Act

Local



Corporate Plan and Community Vision
Logan City Council Planning Scheme, Sustainability Policy, Climate Change Resilience Policy

Overarching Strategy

(This Document)



Natural Environment Elements

PLANTS & ANIMALS



WATERWAYS & WETLANDS



Council Programs, Strategies and Plans

Logan priority species prioritisation framework

Priority Species recovery plans and Management

Parks Strategy and Recreational Trails Strategy

Environmental Conservation Partnerships

Environmental (vegetation) Offsets Delivery

Climate Change Resilience Strategy 2021-2031

Logan Rivers and Wetlands Recovery Plan

River visions and waterway recovery plans

Logan Waterbodies Asset Management Framework

Environmental Health Strategy 2022-2025

River accessibility and connectivity plans

Destination Management Plan 2018-2022

Figure 1: Strategic overview





1.2 Policy position

Council commits to demonstrating leadership in the protection and enhancement of our natural environment.

Council's Sustainability Policy recognises the natural environment as a key pillar of Sustainability. We recognise that:

- our First Nations people have lived and thrived in partnership with nature for tens of thousands of years and we pay respect to their knowledge, understanding and spiritual connection with our natural environment;
- our strategic intent is to protect and enhance our natural environment in partnership with our community;
- to achieve our vision will require us to demonstrate leadership in environmental sustainability to actively support our community on the journey;
- the more our community celebrates our natural environment, the more we learn, appreciate and engage with nature;
- the more our community connects with nature, the more we will understand, respect and care for nature; and
- the value of our varied and thriving natural environment is core to our identity, lifestyle, wellbeing and economy.

Specifically, Council will continue to:

- manage, maintain and prioritise activation, community connection and enhancement of our natural environment. rivers, waterways and biodiversity corridors and the wildlife within them;
- consider the environment holistically and consider impacts broadly in terms of sustainable development, climate and resource recovery;
- consider environmental sustainability and our natural environment when developing strategic documents;
- deliver on-ground environmental projects and programs;
- guide, deliver and support sustainable development and ensure Council's planning scheme protects and enhances wildlife corridors and core habitat across the city;
- engage, collaborate and partner with our community and stakeholders regarding priorities for nature;
- provide programs and funding for community led natural environment outcomes and stewardship and restoration of private land;
- enhance our urban forest, wildlife corridor network and environmentally significant bushland areas; and
- report our environmental initiatives, services and achievements through the annual Environmental Levy report.



02

Vision - Where do we want to be?

The City of Logan's natural environment is protected, enhanced, connected and celebrated to provide valued spaces for people, plants and animals now and into the future.

2.1 Strategic outcomes

This Strategy aims to achieve three strategic outcomes:

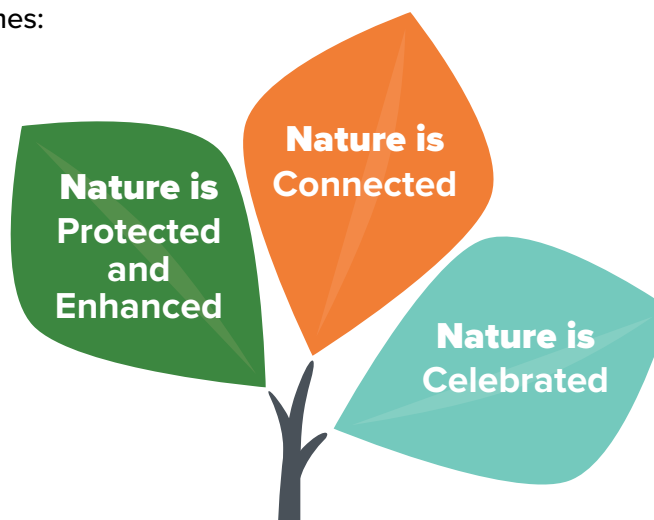
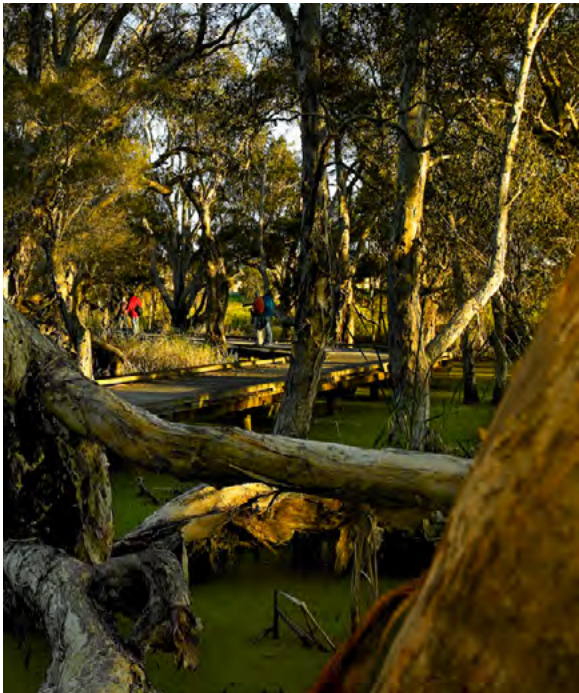




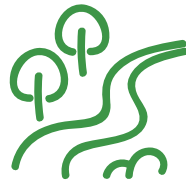
Photo credit: Janine Jungfels



Nature is Protected and Enhanced



Our native flora and fauna will always thrive in valued, protected and enhanced natural environments.



Natural areas, waterways and wetlands are preserved and protected



Urban development and climate change risks on the natural environment are mitigated



Local priority flora and fauna species are protected and resilient



 **10,000**
native trees and shrubs are
planted annually across the
City of Logan's riverside parks

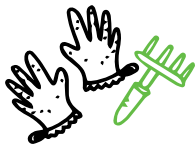


To-date council
has planted more than
70,000 trees
through offset funding which
will be protected forever from
clearing.



Nature is Protected and Enhanced

Q. What are we doing to protect and enhance nature?



Removing pest weeds and species.



Monitoring, investigating, and addressing pollution events.



Waterways and wetlands buffers manage impacts from urban stormwater.



Protection of native vegetation.



Purchase of significant natural areas.



Maintaining and restoring our corridors and natural areas.



More bins and litter campaigns to reduce pollution.



Removing pollutants from urban stormwater.



Did you know?

Council was named “Best on ground” by the Greener Spaces Better Places network for increasing the city’s green cover by 5% at a time that annual population growth was 2%. Council’s own data shows an increase in the city’s tree canopy from 41% in 2016 to 53% in 2020. This has been achieved through a combination of protecting and buying key natural areas. Most of this is achieved through regrowth of protected vegetation on private land. Key achievements include:

- Around 75 hectares of Logan City Council land is used for tree planting as part of the offset program.
- 22,922 native plants have been planted since the River Trees Program started in 2017!
- Since 2015, Council has purchased 3 properties for conservation, totalling 281 ha. We will continue to buy land for this purpose.
- Over 84% of the native vegetation across our city is protected.



Photo credit: Janine Jungfels

Nature is Connected



The natural environment is connected and woven through the City of Logan, bringing the community together with nature.



Biodiversity and wildlife corridors are connected, conserved and rehabilitated



Development and infrastructure is designed to support the safe movement of wildlife



Waterways provide healthy and connected habitats for local aquatic species

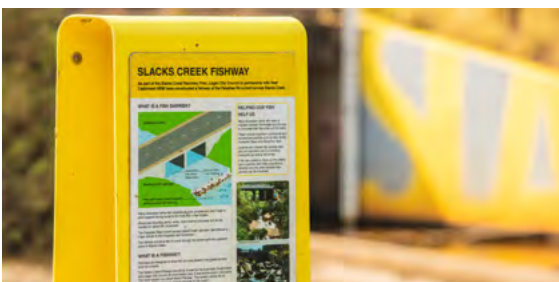


Community is connected with nature and country



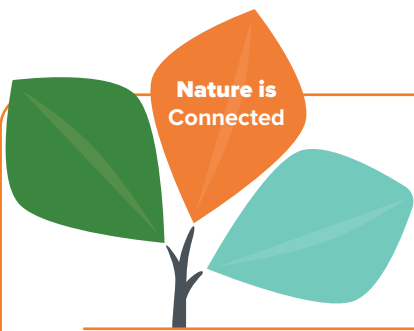
Did you know?

Windaroo Creek is home to the vulnerable grey headed flying-fox and the platypus. In 2019, about 35,000m² of degraded riparian habitat was restored by planting 6,200 native plants and removing weeds.



Did you know?

The Paradise Road culverts were identified in the Greater Brisbane Fish Barrier Prioritisation project as a key fish barrier on Slacks Creek. The creation of a fish passage at this location became the first fish barrier mediation project to be undertaken in the City of Logan. Monitoring before and after these works showed the number of fish able to move through the culverts increased from 18 fish (from 6 species) to 6,546 (from 11 species) after the fishway was constructed. This was a 36,596% increase!



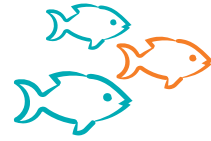
Q. What are we doing to ensure nature is connected?



Engaging and sharing our First Nations' values and connection with Country.



Establishment of more riparian revegetation to stabilise waterways, provide habitat and improve water quality.



Fish barrier removal and provision of fish passage for native fish species.



Deliver activities that connect our community with nature.



Purchasing suitable land to reconnect biodiversity corridors.



Increasing access to waterways.



Greenwood Lakes



Nature is Celebrated



Our community works together to enhance and celebrate our natural environment, enjoying it today and preserving it for the future



First Nations knowledge and practices are recognised, respected and encouraged



The community understands, celebrates and cares for the natural environment



Residents actively protect and rehabilitate the natural environment



Our natural areas are recognised as important areas for connection to country, our economy and for our community's social and physical well being



 **Did you know?**

For the second year running, Logan City Council has recorded the most number of new members joining the Land for Wildlife program of any council area in South East Queensland. There are now 662 Environmental Conservation Partnership members in the City of Logan which includes 411 Land for Wildlife members.





Q. What are we doing to celebrate nature?



Deliver and grow our Environmental Conservation Partnerships to support and celebrate our landholders' work to restore and enhance the natural environment on their property.



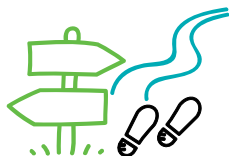
Celebrate and showcase our natural environment in partnership with our community through our free trees program, bushcare, trail care and environmental education.



Supporting the broader community to participate in events and programs including revegetation, pest fishing days, litter removal, EcoForums, citizen science and the Logan Eco Action Festival (LEAF).



Funding community led environmental projects, events and initiatives through EnviroGrants program.



Increase activation and connection of our rivers and waterways through our river trails and wayfinding signage.



Enhance recognition and understanding of our iconic wildlife and flora species unique to our City and region.



03

Where are we now?

3.1 The City of Logan's natural environment

Our natural environment is made up of a diverse range of animals, plants, waterways and wetlands. It contributes to the character of the City of Logan. It also holds cultural heritage values and creates recreational opportunities for our community.

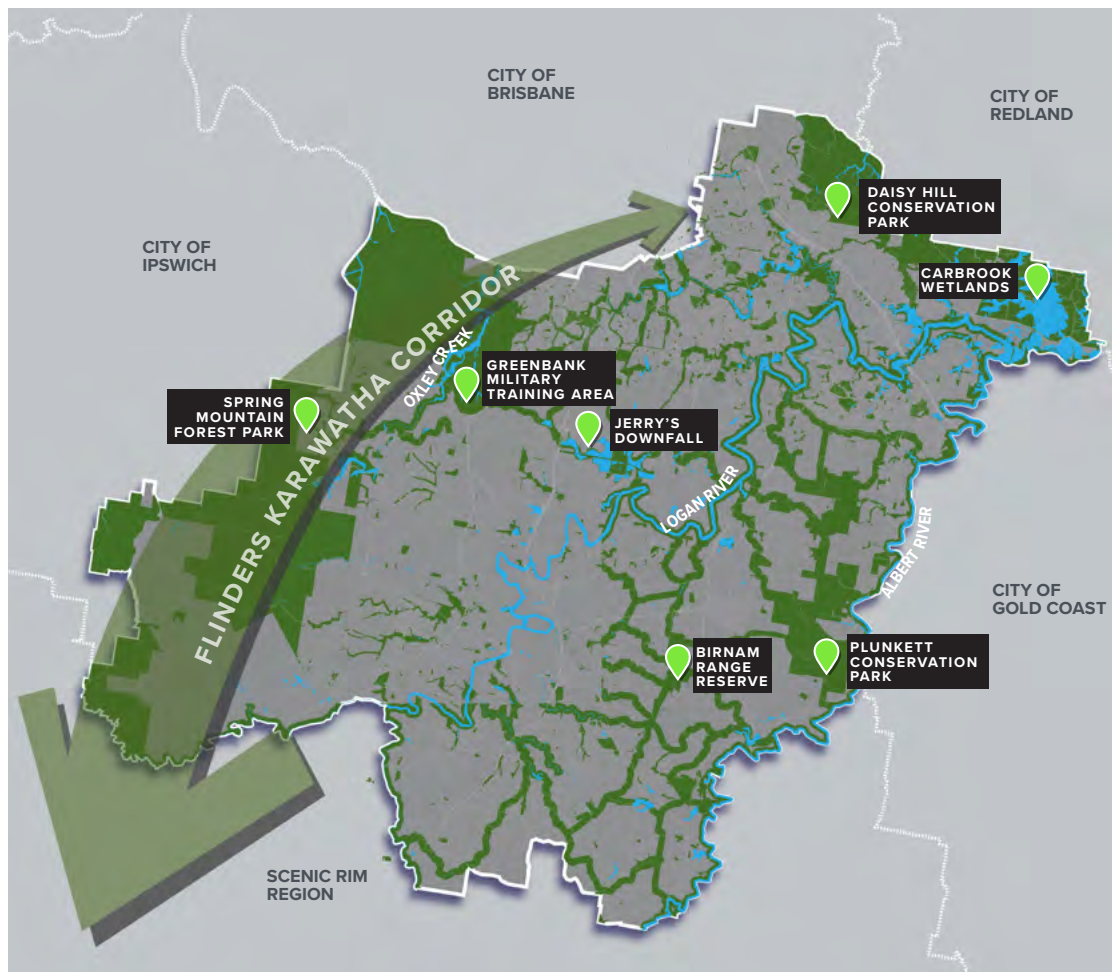


Figure 2:
Map showing some of the natural values and key areas of native habitat across the City of Logan.





3.2 The City of Logan's plants and animals

The City of Logan has a diverse range of natural vegetation types that provide invaluable ecosystem services, habitat, food and homes for our unique and special native animals. The types of vegetation found in our city range from vine forests, urban and tropical forests, through to low land swamp communities and native trees over 300 years old.

Council recognises the value of our unique and special plants and animals regardless of land tenure, and is committed to protecting, enhancing, connecting and celebrating our natural environment.

With a green canopy cover of around 53%, the City of Logan is a green city rich in biodiversity providing a broad range of habitat types for many unique and special species.

The City of Logan is home to over 500 species of native animals including at least 56 species of native mammals, 273 species of birds, 58 native reptile species, 27 native frogs and many fish and insect species.

All these native animals and plants are special to the City of Logan and include iconic species such as koala, flying fox, spotted tail quoll and platypus. Council is committed to the protection and recovery of these important species and has a range of species recovery plans to ensure this diversity of species remains a priority.



Did you know?

There are 5,428 hectares of ecological corridors across the City of Logan. This includes the Flinders Karawatha Corridor, which is one of the largest remaining continuous stretches of open Eucalyptus forest in South East Queensland.

Some of our plants and animals



Gossia gonoclada

Gossia gonoclada is an endangered species listed in both state and federal legislation. The species grows only in the Logan and Brisbane areas. The Logan and Albert River catchments have the majority of known trees. In 2001, a study found there were only 73 natural *Gossia gonoclada* specimens in the world, with 64 of them located in the City of Logan.

Melaleuca irbyana

The swamp tea tree is an endangered tree that grows around the Jimboomba and Waterford West areas in the City of Logan. It is only found around Beaudesert, Boonah, Logan, Ipswich, Laidley and Esk. Fewer than 10% of the original swamp tea tree forest remains.

You can see swamp tea trees at:

- Henderson Reserve
- Blackwood Reserve
- Moffatt Park



Spotted-tailed quoll

The spotted-tailed quoll is a carnivorous marsupial similar in size to a cat, with ginger fur, white spots and a pouch. It is an elusive, secretive animal and has reportedly been seen over the years across the City of Logan. After a decade of searching for hard evidence of its existence in the City, scat (faeces) was collected recently on a privately-owner property in Undullah during a Logan City council flora and fauna survey which was tested and confirmed to be from a spotted-tail quoll.



Koala

The City of Logan has a significant koala population and one of the world's largest and respected koala conservation centres located at Daisy Hill Conservation Park. With over 75% of the city retaining wooded vegetation cover, (approximately 75,000 hectares) we are ideally placed to ensure we provide a proactive, innovative and sustainable approach to koala conservation. Extensive vegetated koala habitat areas in the city include the northern suburbs which form part of the Koala Coast, Carbrook Wetlands in the east, Greenbank Australian Defence Force areas and Spring Mountain Reserve in the west and Plunkett Conservation Park in the South-East.

Find out more

Have a look at these factsheets to learn more about the City of Logan's threatened wildlife and plants

logan.qld.gov.au/downloads/file/60/threatened-wildlife

logan.qld.gov.au/downloads/file/2454/threatened-plants-of-logan



56
NATIVE
MAMMAL
SPECIES



273
SPECIES
OF BIRDS






28 NATIVE
FROG
SPECIES




58 SPECIES
OF
NATIVE
REPTILES


OVER
300
FISH AND
103
NATIVE
INSECT
SPECIES



HOME TO ONE OF
AUSTRALIA'S LARGEST
BUTTERFLIES, WITH A
WINGSPAN OF UP TO



150 mm

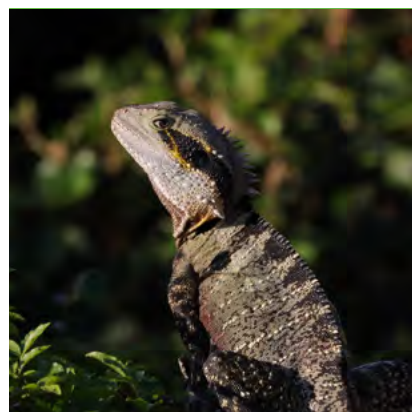


Photo credit: Janine Jungfels





3.3 The City of Logan's waterways and wetlands

The City of Logan is home to two iconic rivers: the Logan River and the Albert River. Both of these waterway systems are complex and highly productive environments. They provide habitat for important animals including native fish and platypus. They manage the flow of water through the City of Logan, providing flood mitigation. They also provide important environments where the community visit and interact with nature.


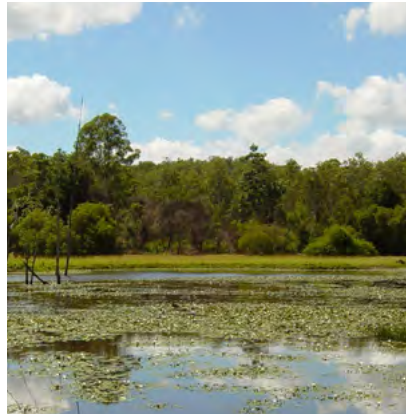

There are around 200 wetlands in the City of Logan. Wetlands improve water quality and also provide important breeding grounds and habitat for fish, migratory birds and some rare species. Some of these wetlands may have permanent water while others may appear as grassy flat floodplains that only hold water temporarily after rain.

Logan City Council has developed the following strategies and plans that support the maintenance and enhancement of waterways and wetlands:

- 50-year river visions for the Logan and Albert Rivers, with themes around river planning, river destinations and river health.
- Recovery plans for Slacks Creek, Scrubby Creek, Belivah Creek and Upper Oxley Creek with actions to improve waterway health, ecological connectivity, and community connections.
- Catchment Action Plans for the Logan-Albert Catchment and the Lower Brisbane-Redlands Coast Catchment to identify actions across the whole catchment to improve waterway health
- Accessibility and Connectivity Concept Plans for the Logan and Albert Rivers identifying opportunities to use the rivers.
- Water Body Asset Management Framework

Our waterways and wetlands

2,633
HECTARES
OF
WETLANDS



2,177
KILOMETRES OF
WATERWAYS



Photo credit: Janine Jungfels



Did you know?

Platypus were detected in a number of locations along Logan's Albert River using a DNA survey undertaken by Logan City Council in collaboration with Wildlife Queensland. While there had been sightings reported, this was the first official detection in the Albert River since 2001.

Find out more

Visit Council's website to find out about the 50-year vision for Logan's waterways and the projects which have already been undertaken

logan.qld.gov.au/environment/river-vision

Berrinba Wetlands

Berrinba Wetlands Park provides visitors with 80 hectares of natural beauty and recreational facilities. There are 430,000 new native plants, 100 nesting boxes for birds, possums and gliders, and 8 km of walking tracks for everyone to enjoy.



Eagleby Wetlands

Eagleby Wetlands contain many different important habitat types for waterbirds and reptiles, such as melaleuca swamps, a freshwater lake, woodland and open grassland. More than 200 Australian native bird species have been recorded in the area, including 19 of the 24 Australian Raptors, and almost half of the bird species found in Queensland.



04

Where are we going?

Council is committed to the protection and enhancement of the significant natural environmental values in the City of Logan. This will be achieved by:

- Protecting and enhancing the existing significant natural environments,
- Connecting natural environments, corridors, and community, and
- Celebrating and conserving the natural environment with the community.

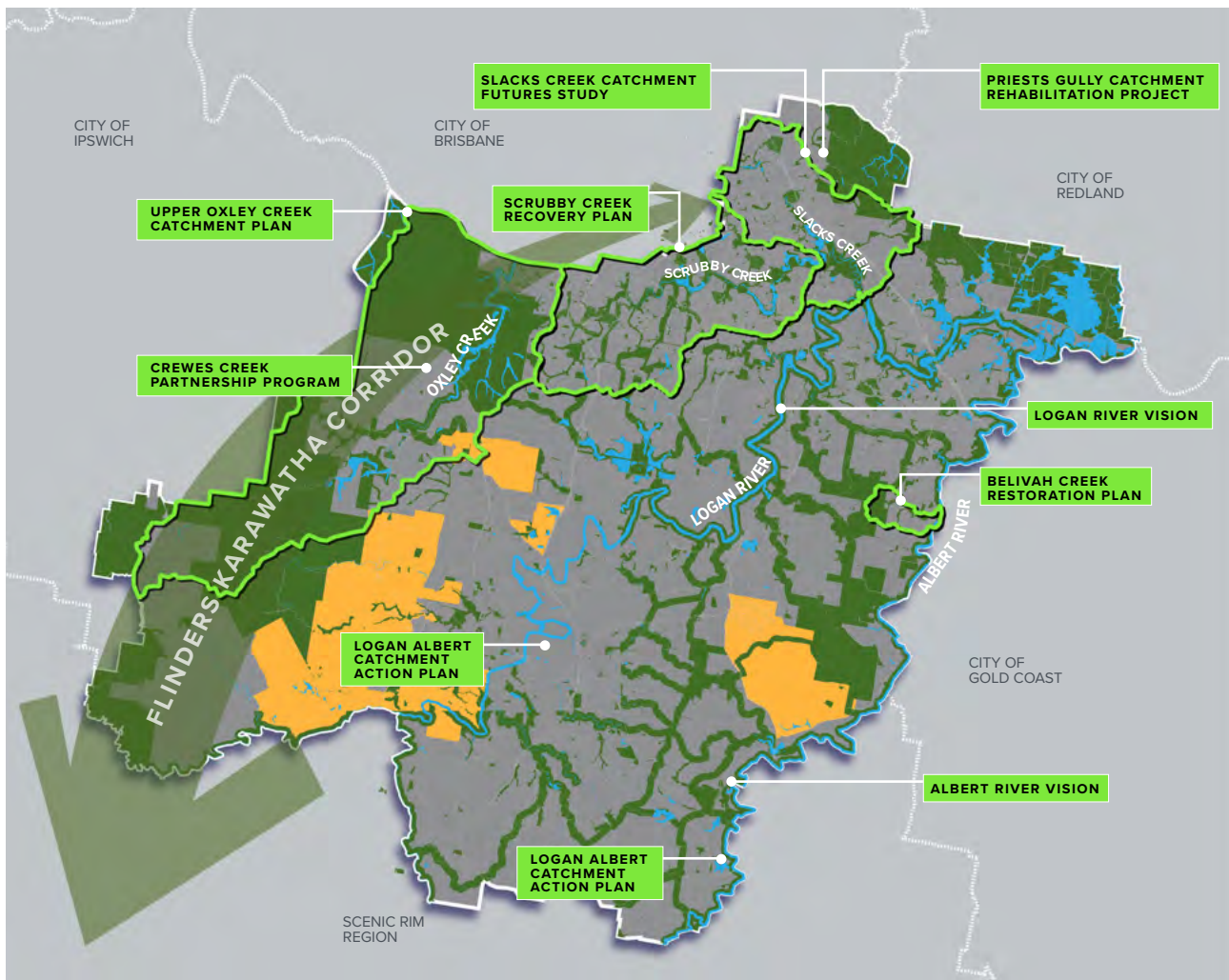




4.1 Key areas of interest

The key areas of interest for Council in achieving a “natural environment that is protected, connected and celebrated to provide valued spaces for people, plants and animals now and into the future” include:

- Protecting and enhancing significant natural areas – Enhancing existing important natural areas and protecting them from threats.
- Managing impact from development - Ensuring development minimises impacts on the natural environment by protecting significant species and protecting adjoining environments and waterways from impact.
- Planning for recovery in a changing climate – Having clear plans to prioritise and co-ordinate actions on Council and privately owned land to enhance the natural environment and climate change resilience.
- Working with others – Partnering with landholders, other government departments, industry and research to deliver outcomes across land owned by Council and others.



LEGEND

- Protected natural areas (Council parks, national parks, conservation areas) Development overlays for protection (Biodiversity overlay, wetland and waterway code overlay, flooding overlay)
- Priority Development Areas

- Recovery plans for Slacks Creek, Scrubby Creek, Priests Gully catchment, Belivah Creek and Upper Oxley Creek



05

How are we going to get there?



Protecting, enhancing, connecting and celebrating the City of Logan's natural environment will require input from a range of stakeholders – Council is not able to do it alone.



Photo credit: Janine Jungfels

5.1 Council's plan of action

Council will undertake the following specific actions to support the vision and outcomes of this strategy:

ACTION	DESCRIPTION	OUTCOMES ACHIEVED		
		 Nature is Protected and Enhanced	 Nature is Connected	 Nature is Celebrated
PROTECTING AND ENHANCING SIGNIFICANT NATURAL AREAS				
NES1	Continue delivery of our Waterways and Wetlands Recovery Plan	✓	✓	✓
NES2	Enhance delivery of on our Albert and Logan River Visions through catchment based recovery plans	✓	✓	✓
NES3	Prioritise ecological restoration in identified wildlife and biodiversity corridors	✓	✓	✓
NES4	Continue to prioritise strategic land acquisitions for environmental purposes of land with high ecological value, connectivity and multiple use opportunities	✓	✓	✓
NES5	Deliver actions targeting recovery and restoration of the City of Logan priority species	✓	✓	✓
NES6	Deliver waterbody asset management actions to enhance our wetlands and habitat for wildlife	✓	✓	✓
NES7	Enhance maintenance of our environmental parks and reserves	✓	✓	✓
MANAGING IMPACT FROM DEVELOPMENT				
NES8	Review and update Planning Scheme provisions and guidelines to support protection, enhancement and connection of our natural environment	✓	✓	✓
NES9	Deliver innovative Water Sensitive Urban Design projects to improve water quality and enhance total water cycle management outcomes	✓	✓	✓
PLANNING FOR RECOVERY				
NES10	Review and enhance environmental governance to align with best practice natural environment management	✓	✓	✓
NES11	Support the development and delivery of a Recreational Trails strategy to improve connection and engagement with our environmental and bushland parks and reserves	✓	✓	✓

ACTION	DESCRIPTION	OUTCOMES ACHIEVED		
				

WORKING WITH OTHERS

NES12	Enhance our environmental conservation partnerships program to increase private land conservation outcomes	✓	✓	✓
NES13	Enhance engagement and with our First Nations people to increase respect, understanding and traditional owner stories and truth telling of our lands and country	✓	✓	✓
NES14	Build a Riverine Discovery Centre to showcase our amazing waterways	✓	✓	✓
NES15	Enhance our environmental education events, activities and workshops in partnership with our community	✓	✓	✓
NES16	Review and enhance our suite of environmental educational materials showcasing our natural environment	✓	✓	✓
NES17	Enhance our environmental grants programs to support our community in delivering community driven environmental projects and outcomes	✓	✓	✓
NES18	Support local businesses to undertake actions that protect, enhance and celebrate the natural environment.”	✓	✓	✓
NES19	Increase activation of our waterways through canoe and kayak trails, interpretative signage and place making projects	✓	✓	✓
NES20	Support citizen science programs to help address key knowledge gaps for managing Logan's natural environment.	✓	✓	✓
NES21	Advocate for increased State and Federal funding for natural resource management	✓	✓	✓

How community can help...

- » Join Council's Environmental Conservation Partnerships program logan.qld.gov.au/environment/conservation-incentives-programs
- » Start a Bush Care group
- » Apply for EnviroGrants funding logan.qld.gov.au/environment/envirogrants
- » Join community environmental events and activities logan.qld.gov.au/environmental-events
- » Collect important data logan.qld.gov.au/environment/report-sightings and be part of citizen science programs like iNaturalist and the Platypus Watch logan.qld.gov.au/getinvolved
- » Take advantage of Council's free tree program logan.qld.gov.au/trees/free
- » Manage weeds, pest and domestic animals on your property logan.qld.gov.au/biosecurity
- » Let Council know if you see any suspicious activities harming your local environment logan.qld.gov.au/contact-us-1
- » Ensure no litter enters the local waterways logan.qld.gov.au/downloads/file/102/littering-fact-sheet
- » Share and celebrate the natural beauty of the City of Logan with others
- » Report wildlife sightings - [Report wildlife sightings – Logan City Council](#)



How business owners and developers can help...

- » Work with council to see how your new development can deliver better outcomes for the City of Logan's natural environment - [*Pre-lodgement advice – Logan City Council*](#)
- » Understand how your local business can better protect the natural environment [*logan.qld.gov.au/environment/conservation-incentives-programs*](http://logan.qld.gov.au/environment/conservation-incentives-programs)
- » Apply for an Eco Award to promote the great work you are doing [*logan.qld.gov.au/environment/envirogrants*](http://logan.qld.gov.au/environment/envirogrants)
- » Apply for an EnviroGrant [*logan.qld.gov.au/environment/envirogrants*](http://logan.qld.gov.au/environment/envirogrants)
- » Let Council know if you see any suspicious activities harming your local environment [*logan.qld.gov.au/contact-us-1*](http://logan.qld.gov.au/contact-us-1)

Logan City Council
150 Wembley Rd,
Logan Central QLD 4114
Phone: 07 3412 3412
Email: council@logan.qld.gov.au

logan.qld.gov.au

