

LOGAN RIVER VISION

RIVER HEALTH



RIVER DESTINATIONS



RIVER PLAY



Logan City Council acknowledges the Traditional Custodians of the land, pays respect to Elders past and present, and extends that respect to all Aboriginal and Torres Strait Islander peoples in the City of Logan.





VISION STATEMENT

In 2067, the Logan River is a world class environmental asset that is accessible to everyone, is celebrated and will connect people and places along its length from the mountains to the bay.

LOGAN RIVER VISION OUTCOMES

The Logan River will continue to provide many benefits for residents and visitors. It's a place of spiritual significance and a natural resource for drinking and irrigation, areas for leisure and recreational activities as well as a key wildlife corridor from the mountains to the bay.

The Logan River Vision is a 50 year vision from 2017 through to 2067. It was developed from ideas and feedback from the community and will:

- + support a healthy and clean river
- + allow for continued urban and population growth
- + create tourism and business opportunities
- + provide access for all abilities
- + inspire innovation and creativity for custodians now and for the future.

COMMUNITY ENGAGEMENT

In 2016, over a 10 week period we heard from hundreds of residents across the city about what they want the Logan River to be like in 50 years' time. From this, we received 678 ideas and engaged with approximately 10,000 community members both online as well as through over 14 community activities across the City of Logan. The content of these pages of the Logan River Vision has been compiled from information received from the community of Logan. The concept sketches included in these pages are provided as examples of how a range of themes can be applied to achieve the vision for the Logan River.

Through community engagement, it has become clear that the Logan River has distinct river reaches along it, with its own key assets and areas of opportunity. These exciting results have driven Logan City Council to begin implementing the opportunities identified by the community.

For more information, visit
www.logan.qld.gov.au/rivervision

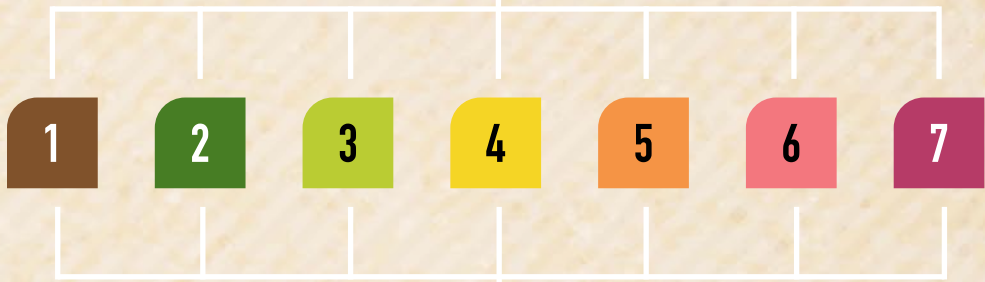
WHERE ARE WE UP TO?



1 VISION



7 REACHES



3 THEMES

health destinations play

42 OPPORTUNITIES



11



13



18

IMAGINE YOURSELF IN 50 YEARS' TIME: what would your reflections be of our Logan River?



We have come a long way since we started talking about a vision for the Logan River. Everyone knows the Logan River and how important it is for our city. We all love talking about the different experiences we can have on our river.

There are so many new eating and drinking areas serving sustainably sourced local cuisine overlooking the river. An environment centre allows people to learn about the river's historical, cultural and environmental values in an interactive innovative way. With hundreds of river edge parks, there are so many different ways you can connect to the river.

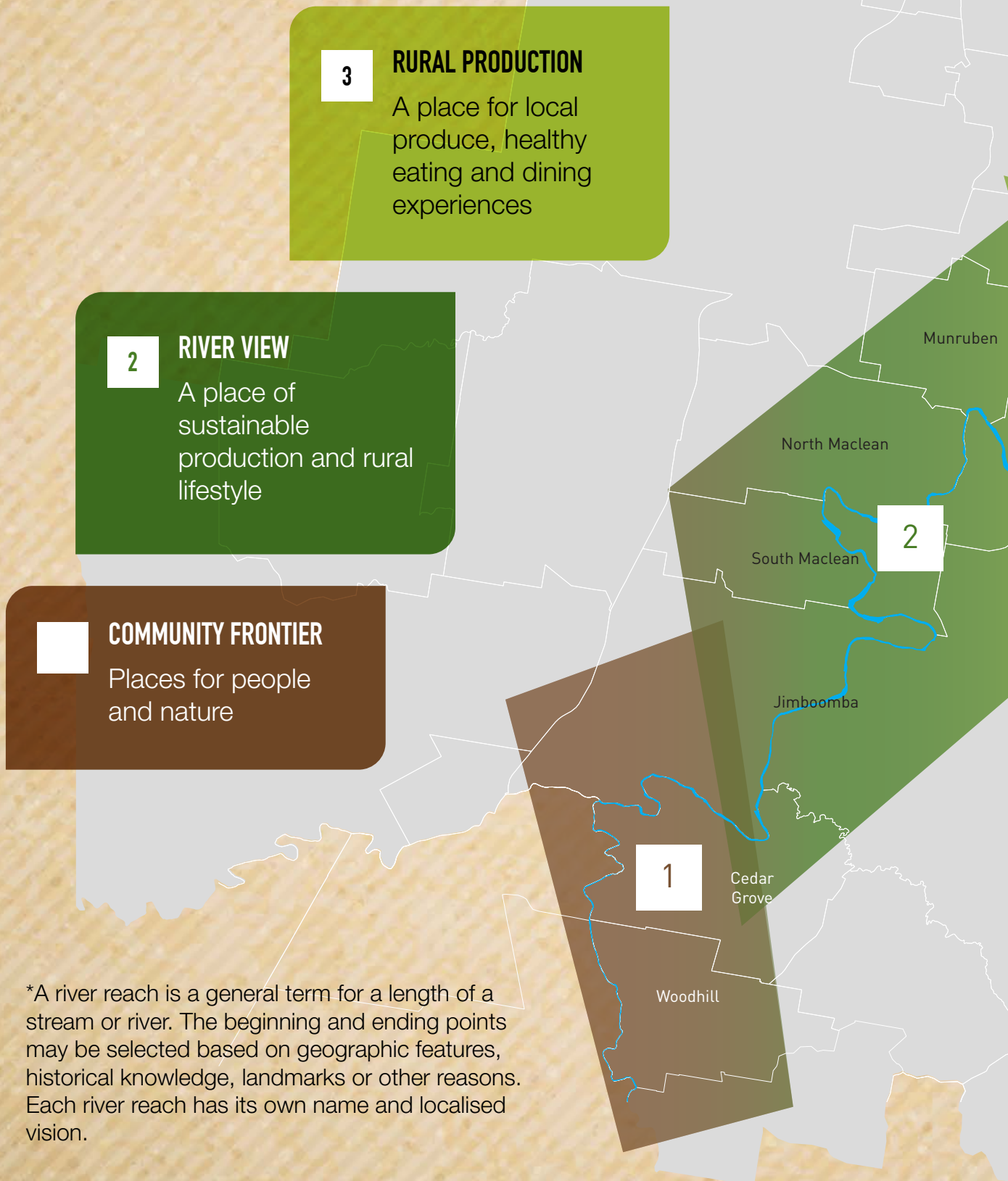
Pathways, footbridges, pontoons and walkways allow everyone to interact with the river. With state-of-the-art facilities, people can always learn about the river in an interactive fun way. People living on the river's edge are supported and encouraged to help protect and restore their banks and improve water quality. We now have an internationally recognised rowing training stretch and short course facility which is also used as an outdoor stadium. There are many recreational trails - canoe, horse and hiking along the river from the mountains to the bay, allowing for short-term stays in some reaches of the river. I hope that by sharing my personal reflections, I have highlighted the many changes that have occurred along the Logan River in the last 50 years since we started talking about the Logan River Vision.





LOGAN RIVER REACHES

Through our conversations with you, we have identified 7 reaches along the river.



3

RURAL PRODUCTION

A place for local produce, healthy eating and dining experiences

2

RIVER VIEW

A place of sustainable production and rural lifestyle

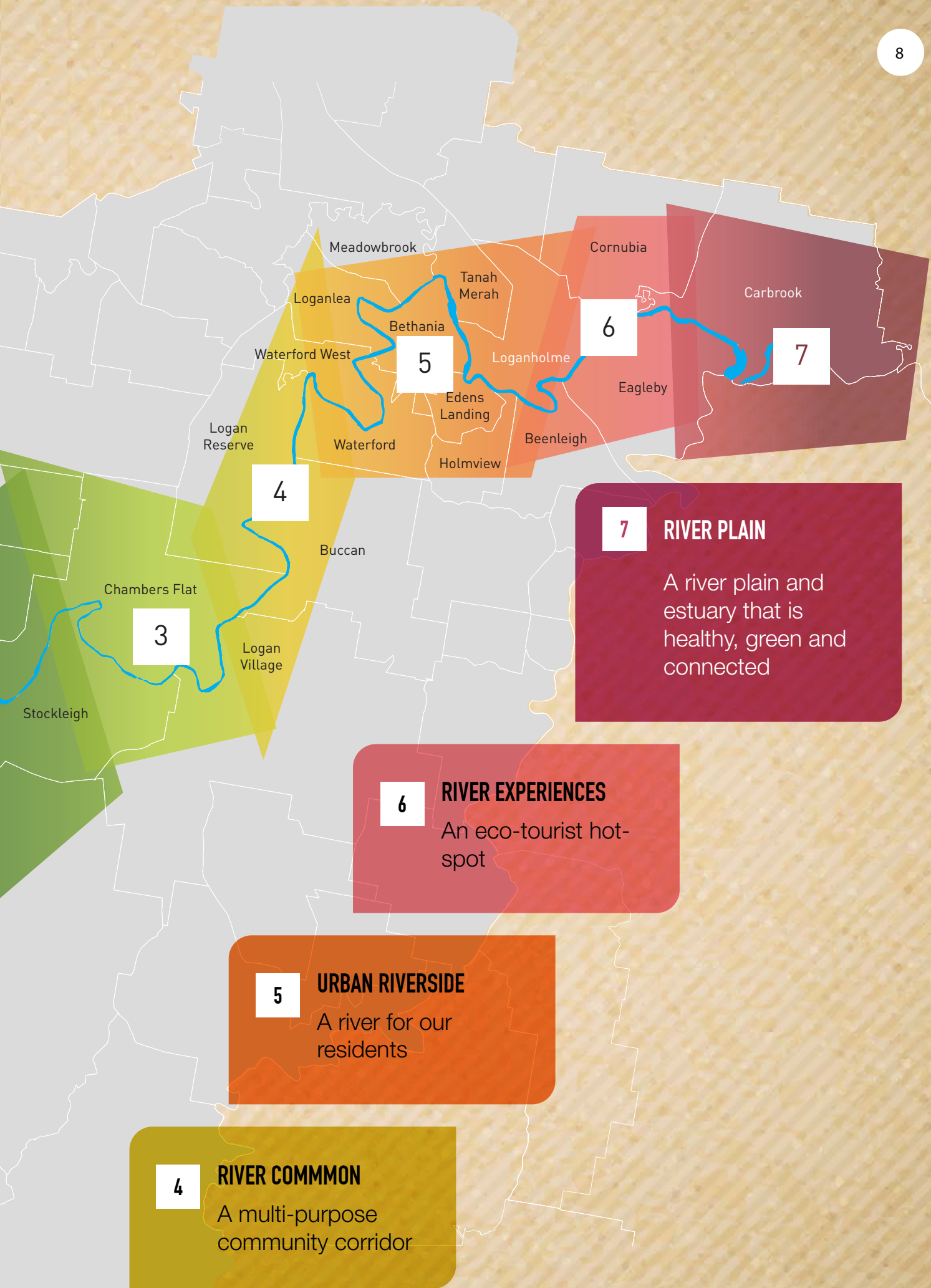
2

COMMUNITY FRONTIER

Places for people and nature

1

*A river reach is a general term for a length of a stream or river. The beginning and ending points may be selected based on geographic features, historical knowledge, landmarks or other reasons. Each river reach has its own name and localised vision.



4

RIVER COMMON

A multi-purpose community corridor

5

URBAN RIVERSIDE

A river for our residents

6

RIVER EXPERIENCES

An eco-tourist hot-spot

7

RIVER PLAIN

A river plain and estuary that is healthy, green and connected

VISION THEMES

There are three vision themes that were developed from feedback:

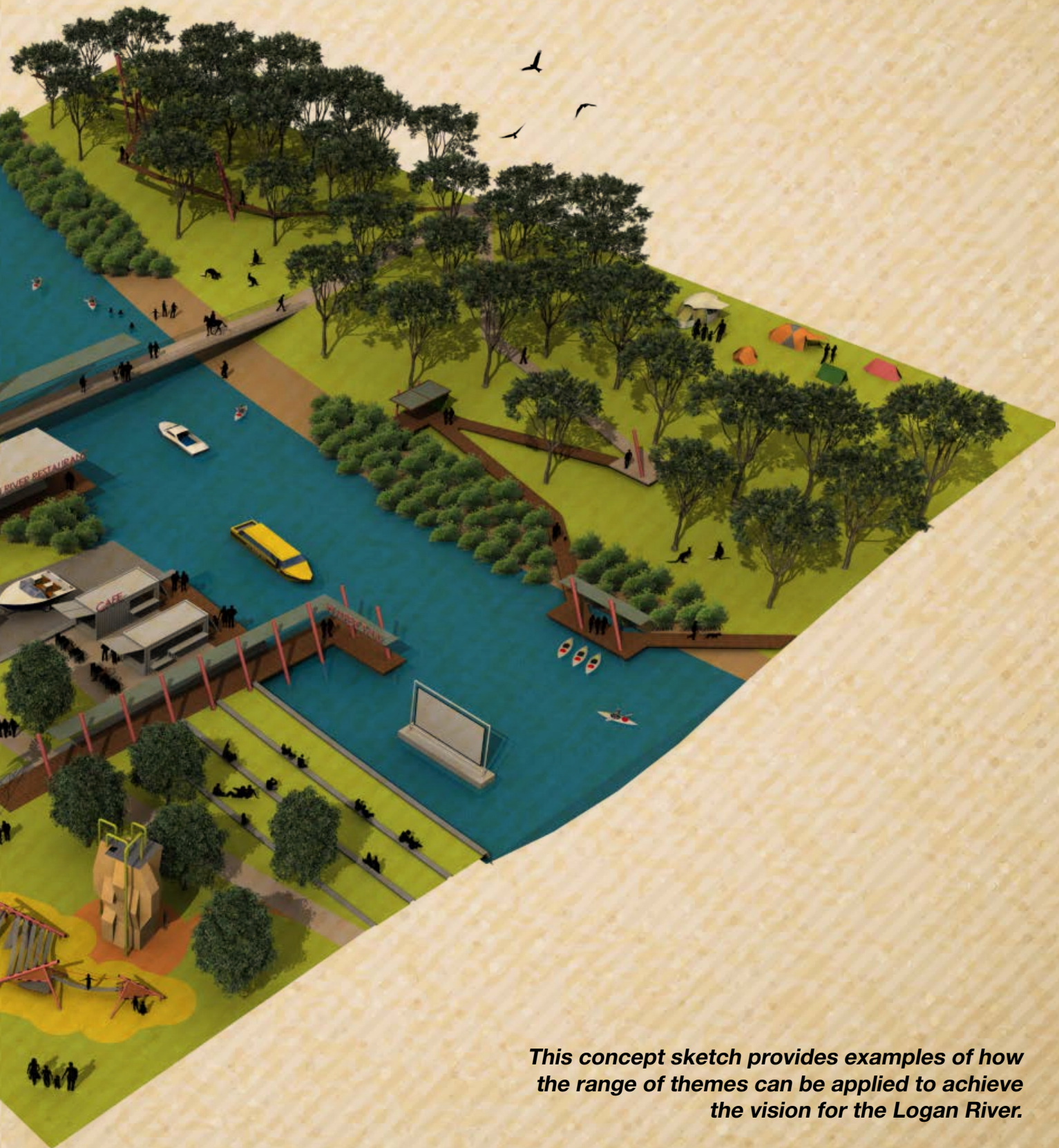
+ River Health

+ River Destinations

+ River Play

These themes are explored in more detail on the following pages.





This concept sketch provides examples of how the range of themes can be applied to achieve the vision for the Logan River.

river health

A river that:

- + is a healthy and clean resource
- + we respect and are proud of
- + is well planned and managed
- + where partnerships are rewarded and promoted.

Imagine a 16 year old dropping a line into the Logan River

“

It's nice to be on the water again which looks really clear today! I wonder if that has anything to do with the improvements they did upstream when I was a kid, surely that's counting for something.

I'm heading upstream to fish for Australian Bass today, I've never done any sport fishing before but I thought I would give it a crack. My uncle was saying they have been restocking the Logan River with Australian Bass for years and that landholders are involved too. I haven't gone upstream for a long time, but I can see that landholders have been planting trees along their banks which is great to see. I'm using sub-surface lures today that should do the trick!

”



World-class policy for sustainable development along the river

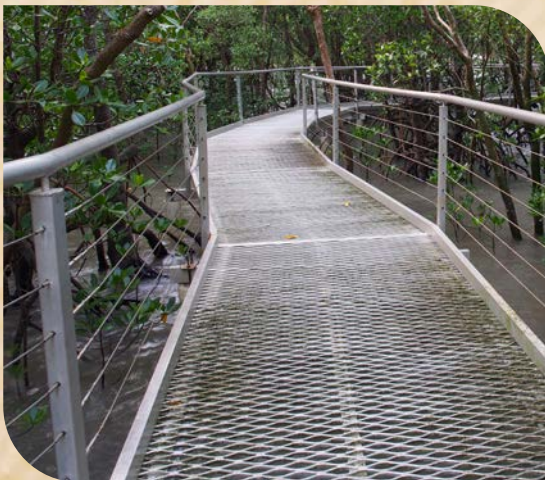
Mangrove protection and restoration

Partnership with landholders for river restoration

Green corridor

Migratory terrestrial, water and shorebird species promotion and protection

Wildlife viewing spaces



river destinations

A river that:


- + we all know and love
- + represents local identity and is internationally recognised
- + drives the local and regional economy
- + acknowledges historical and current connections to the river
- + sustainably designed and protected.

Imagine a local enjoying a riverside experience in 50 years' time

“

It's nice to be able to sit here and enjoy my cappuccino while I watch what's happening on the Logan River. It's pretty busy today, for a weekday, the water taxis are zipping past picking up their usual commuters, the footbridge is bustling with bike riders and it looks as though they're running one of those historical segway tours again. Must find out who runs that, it would be fun to do with the kids. Ok so I have to dash now, lucky my office is upstairs where I can enjoy this beautiful river view.

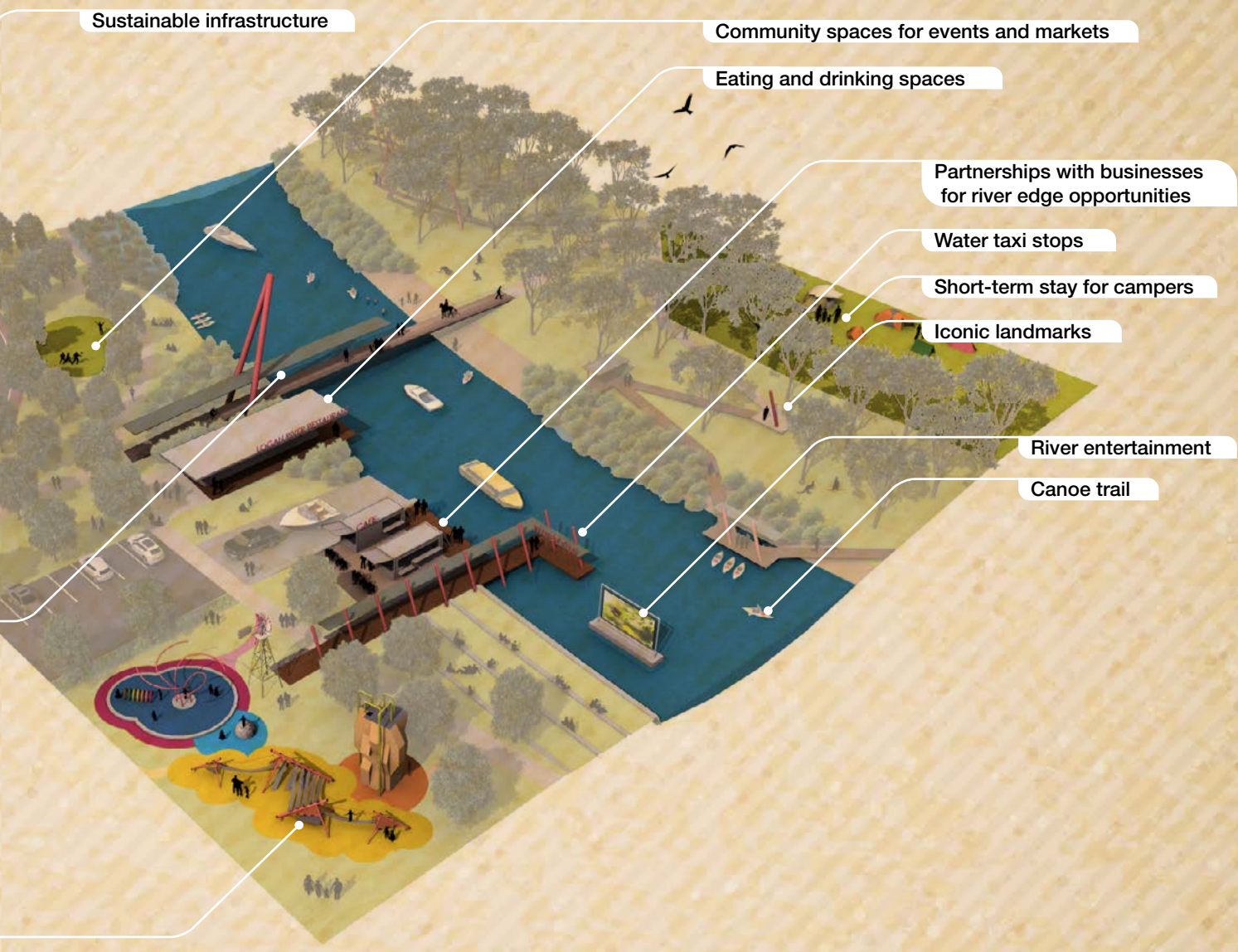
”



Iconic multi-transport bridge



Fantastic riverside parks



Riverheart Parklands - Ipswich. Photo by Paul Castle. Source: Ipswich City Council

river play

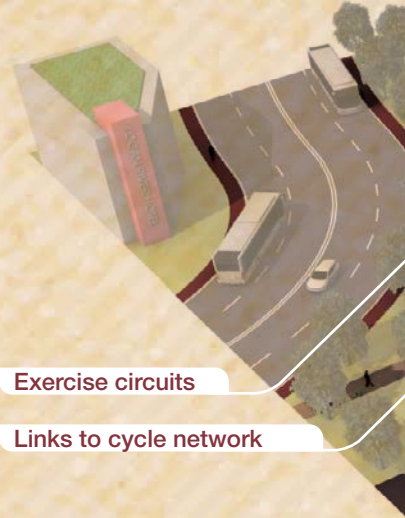
A river that:

- + connects people and is accessible for everyone
- + provides fun, innovative activities for everyone
- + allows partnerships to form with the community
- + expresses the character and identity of the 'place'
- + balances activation and river health outcomes

Imagine an 8 year old experiencing the Logan River in 2067



Wow! Mum just told me that they have opened a new water play area on the river, I can't wait to go there on the weekend! I love that we can all visit the river and be able to ride our bikes from our house all the way along the river to where mum and dad like to go to the markets, it's so much fun. I like stopping on the foot bridges and looking at people kayaking, sometimes we get to see Brahminy Kites, which is pretty cool. My brother prefers to play with the interactive wayfinding along our bike ride because he gets to learn more about the river which helps him with his assignments. I can't wait for the weekend!



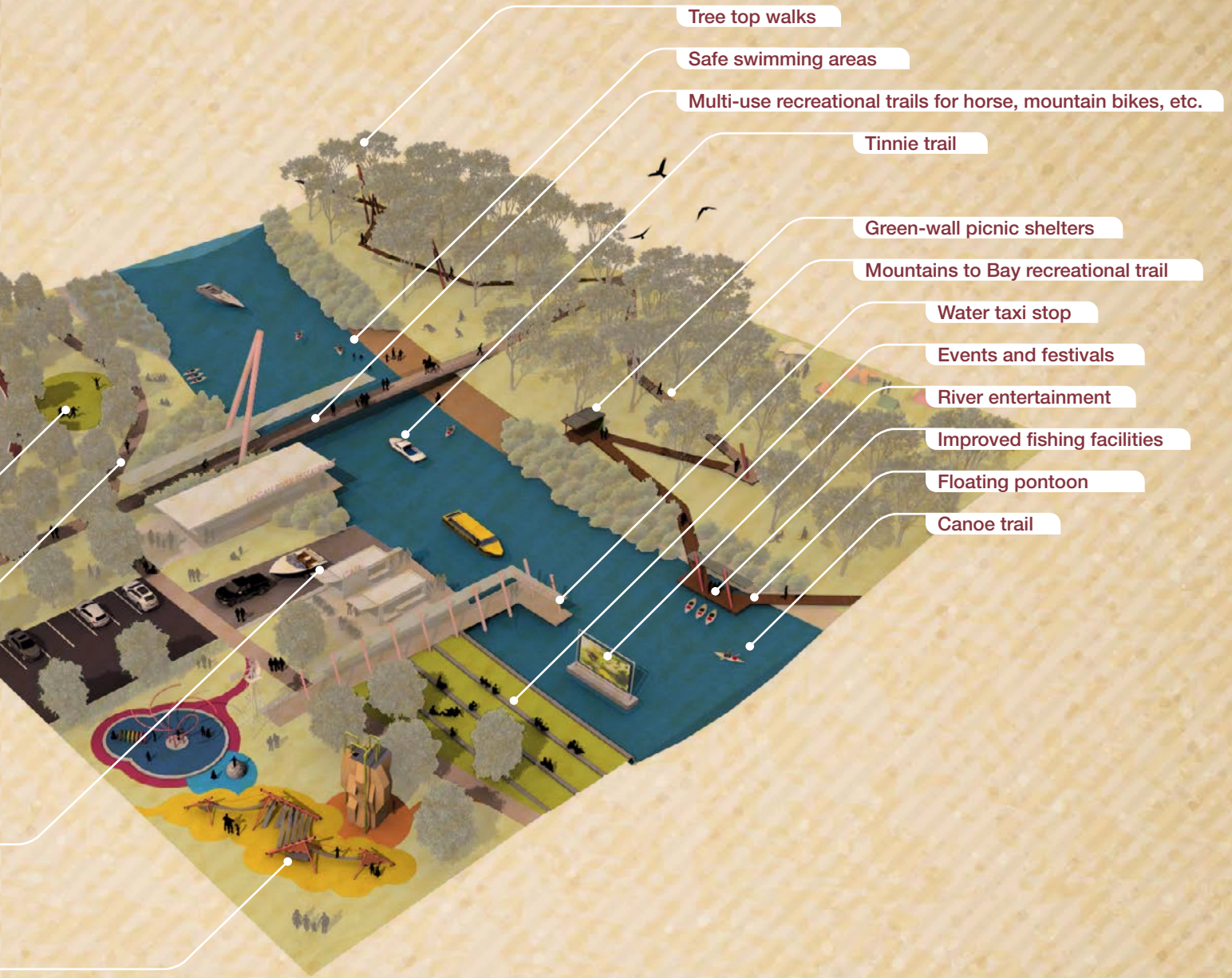
Exercise circuits

Links to cycle network

All-accessible boat ramp

Fantastic riverside parks





OPPORTUNITIES

This table highlights the many and varied opportunities along the entire length of the river that were identified from your ideas. These opportunities will assist with future decisions and projects that occur along the river. Over the next 50 years new opportunities will present them self and these will be guided by the three themes of the Logan River Vision.

	OPPORTUNITIES	REACHES						
		1	2	3	4	5	6	7
river health	1. Partnerships Partnerships with river edge land owners to support sustainable farming practices, river restoration activities and bank re-establishment	Yes	Yes	Yes	Yes	Yes	Yes	Yes
	2. Partnerships River stewardship partnerships with river edge schools, sporting, community groups and individuals	Yes	Yes	Yes	Yes	Yes	Yes	Yes
	3. Recovery Re-establish the river's bank and local creeks with vegetation	Yes	Yes	Yes	Yes			
	4. Recovery Marine plant protection and restoration, especially Mangroves and salt marsh					Yes	Yes	Yes
	5. Recovery Provide real-time water quality data to the community, both onsite through bridge displays or solar powered buoys	Yes	Yes	Yes	Yes	Yes	Yes	Yes
	6. Recovery Implement on-ground actions for long term river recovery, to create a connected green corridor and improve water quality	Yes	Yes	Yes	Yes	Yes	Yes	Yes
	7. Recovery Fish habitat protection education and recovery and waterway barrier removal					Yes		Yes
	8. Education and Culture Endangered species (Melaleuca irbyana / Swamp Tea-tree and Gosia gonoclada / Angle-stemmed Myrtle) protection, education and recovery		Yes			Yes		
	9. Education and Culture Any new wastewater treatment facilities are to integrate educational opportunities and resource recovery (recycled water, biosolids and biogas)	Yes						
	10. Education and Culture Migratory bird habitat protection, education and recovery						Yes	Yes
	11. Active Edge Provide spaces and facilities for bird watching eco-tourism							Yes

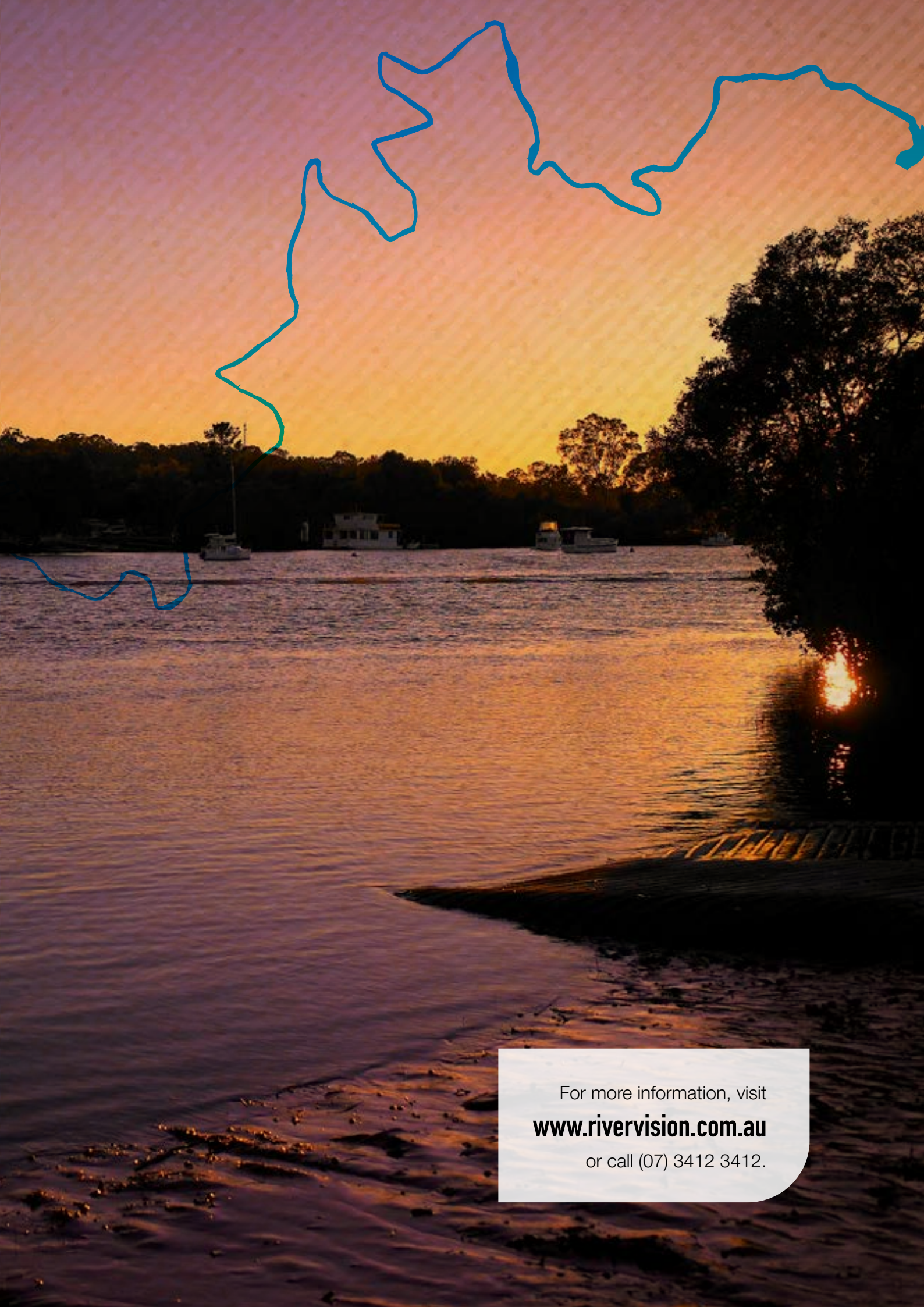
	OPPORTUNITIES	REACHES						
		1	2	3	4	5	6	7
river play	25. Access River Infrastructure at key parks to allow river access and connection to the river. Improving boat ramps and pontoons for a range of vehicles and all abilities	Yes	Yes	Yes	Yes	Yes	Yes	Yes
	26. Active River River based community health and wellbeing programs	Yes	Yes	Yes	Yes	Yes	Yes	Yes
	27. Active River Designated safe swimming areas		Yes					Yes
	28. Active Edge Park community infrastructure to include green wall shelters, solar lighting, camping facilities, exercise circuits, tree top walkways, adventure play grounds, event spaces, water and barbecue facilities	Yes	Yes	Yes	Yes	Yes	Yes	Yes
	29. Active Edge An outdoor sports area to watch on-river sports, other forms of river recreation and outdoor multi-use areas				Yes		Yes	
	30. Active Edge Key locations that provide fishing infrastructure	Yes		Yes		Yes		Yes
	31. Active Edge A fitness event space and area to promote health and fitness opportunities	Yes			Yes	Yes		
	32. Active Edge Infrastructure for bike, boat or kayak hire and short-term storage facility	Yes			Yes	Yes	Yes	
	33. Active Edge Ride sharing hovercraft port or taxi service			Yes	Yes	Yes	Yes	Yes
	34. Active River Promotion of Eco-tourism (tinnie hire, paddle steamer or guided tours, on-river bikes, kayak and self-guided river trails)	Yes	Yes	Yes	Yes	Yes	Yes	Yes
35. Connect Cross river multi transport bridges that are iconic and can help test and filter water quality and provide a display of the health of the river	Yes	Yes	Yes	Yes	Yes	Yes		

IMPLEMENTATION

The Logan River Vision will be at the forefront of council's planning, policies and strategies. It provides a basis for council to promote the community's vision and priorities to neighbouring councils, state and federal government and the private sector. A Logan River Vision Implementation Plan has been developed for opportunities over the next 12 months and during the 2017/2018 period, a four year implementation strategy will be developed. Progress on implementation will be reported back to the community via council's website on an annual basis.

ACKNOWLEDGEMENTS

The Logan River Vision has been developed by Logan City Council, guided and informed by key stakeholders from government, industry, nongovernment organisations, research institutions and the wider Logan community.



For more information, visit
www.rivervision.com.au
or call (07) 3412 3412.

