



Consultation Report

Logan South Wastewater Treatment Facility (WWTP B)

September 2018

Document Control

File Location:		Document ID:	
Amendment History			
Version Number	Description of Change	Author/Branch	Date
A.1	Preparation of draft report	Kate Thomas, LoganWIA	30/08/2018
A.2	Review of draft and feedback throughout	Tania Keelan, LoganWIA	30/08/2018
A.3	Review of draft and feedback throughout	Peter Murphy and Tamara Weaver, Customer Experience and Community Engagement	03/09/2018
A.4	Review of draft and changes to sections 1, 3	Mark Vaughan, Water Infrastructure	06/09/2018
A.5	Review of draft (no changes)	Daryl Reilly, A/Director Roads and Water Daryl Ross, Water Business Silvio Trinca, A/CEO	17/09/2018
A.6	Changes to consultation process diagram in Executive Summary and Section 3	Tony Goodhew, Water Infrastructure Manager	30/09/2018

Contents

1.	EXECUTIVE SUMMARY	4
1.1	Approach to consultation	4
1.2	Participation by community members.....	4
1.3	Feedback received	4
1.4	How feedback will be used	5
2.	PROJECT BACKGROUND	6
2.1	Need for a new wastewater treatment facility.....	6
2.2	Funding arrangements.....	6
2.3	Potential scope of works.....	6
2.4	Location	7
3.	CONSULTATION PROCESS	9
3.1	Process overview.....	9
3.2	Initial consultation activities	9
4.	FEEDBACK RECEIVED	12
4.1	Feedback channels.....	12
4.2	Feedback themes	13
4.3	Feedback by channel.....	13
5.	HOW FEEDBACK WILL BE USED	21
6.	APPENDIX – COMMUNICATION MATERIALS.....	22

1. Executive Summary

1.1 Approach to consultation

Several wastewater servicing strategies and studies have been prepared for the Queensland Government or Logan City Council (Council) in the past five years to identify wastewater servicing options for southern Logan.

While these reports contain some valid technical solutions for establishing a new wastewater treatment facility to service growth in the Park Ridge to Yarrabilba corridor, Council wanted community input on its search for a site for the facility.

An initial six-week consultation period occurred from 9 July to 20 August 2018, with further consultation opportunities to be provided as planning of the treatment facility progresses. The diagram below summarises Council's approach to consultation for this project.

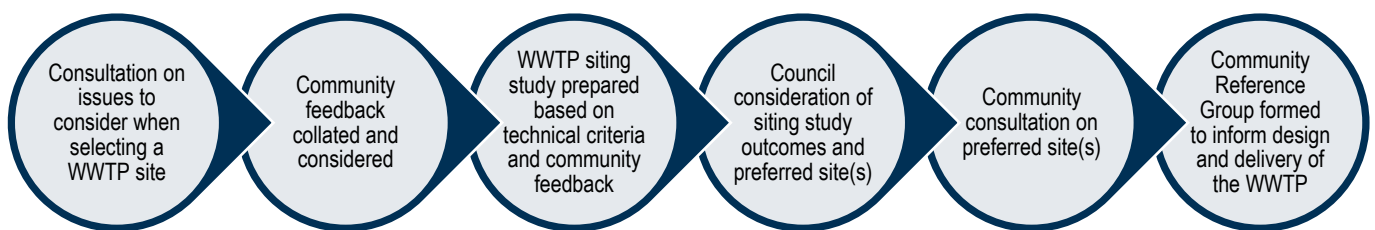


Figure 1: Approach to consultation

1.2 Participation by community members

The initial consultation period featured a range of communication and engagement materials and events, designed to secure feedback from residents, property owners, businesses and other stakeholders located in, or interested in, the Park Ridge to Yarrabilba corridor.

The materials and events included a direct mail letter to 9,733 residents and property owners, a project web page, an online 'Have your Say' site, drop-in information stalls at Logan Village, Stockleigh and Chambers Flat, and responses to direct calls, emails and letters.

Response to Council's invitation to participate in the consultation process was positive, with 907 people visiting the Have your Say site, approximately 220 visiting a drop-in information stall and 75 contacting Council by phone, mail or email to provide feedback. This resulted in a range of formal and informal feedback including completed surveys (70), comments on an interactive map (62), newspaper and online articles (19), hundreds of social media posts and verbal comments, and one petition (signed by 1,361 people).

1.3 Feedback received

Based on all formal feedback received by the project team, the top ten themes for consideration by Council were:

1. **“No to Stockleigh”**: Residents in Stockleigh do not support the acquisition of private properties shown as ‘preferred sites’ for wastewater treatment facilities in Cardno’s 2016 wastewater servicing strategy prepared for Economic Development Queensland (EDQ).
2. **“Make developers incorporate treatment facilities”**: New development areas, such as Yarrabilba, should incorporate their own wastewater treatment facilities (with some respondents nominating Yarrabilba or areas immediately south of Yarrabilba as potential locations for the facility).
3. **“Don’t affect our rural lifestyle”**: Any new wastewater treatment facility could adversely affect the existing rural residential lifestyles of residents in Logan Village, Stockleigh and Chambers Flat.
4. **“Don’t affect areas not being serviced”**: As the new facility is unlikely to directly benefit most rural residential properties, it should not be in an existing rural residential area.
5. **“Protect the environment and our crops”**: A new wastewater treatment facility should not adversely affect the local environment or agricultural businesses.
6. **“Avoid impacts on neighbours”**: A new wastewater treatment facility should not result in odour, light, noise or traffic impacts on residents.
7. **“Negotiate to buy land / buy my land”**: Purchase of land by agreement with property owners is preferred, rather than compulsory acquisition. Private land has been offered to Council (for sale) for the purposes of establishing a wastewater treatment facility.
8. **“Ongoing consultation is needed”**: Residents would like extended opportunities for consultation about the treatment facility location and design.
9. **“Don’t affect local land values”**: A new wastewater treatment facility should not be placed in a location that adversely affects local property values.
10. **“Protect our waterways”**: A new wastewater treatment facility should not have adverse impacts on local flooding or water quality in local rivers / waterways.

1.4 How feedback will be used

Feedback from the initial consultation period (this report) will be used by Council in several ways:

- to inform Logan City Councillors, Logan Water managers, community members and other stakeholders
- to enable Council to investigate if properties offered to Council (for sale) during the consultation period, those currently on the market, or any previously identified in wastewater servicing strategies may be suitable for the purposes of establishing a wastewater treatment facility
- to form part of a siting study which will identify and review potential sites for the new facility. As part of the study, community and stakeholder feedback may be used to develop social criteria for a multi-criteria analysis of potential sites. After the study has been adopted by Council, it will be made available to community members to view (at a time to be determined).

2. Project background

2.1 Need for a new wastewater treatment facility

The Queensland Government's *South East Queensland Regional Plan 2009 – 2031* and the revised *Shaping SEQ South East Queensland Regional Plan 2017* identify areas in the City of Logan where substantial residential, commercial and industrial growth will occur. These areas are centred in the city's southern corridor and include the Yarrabilba and Greater Flagstone Priority Development Areas (PDAs). These areas are developing urban communities with housing, employment and transport options.

To service growth and facilitate development, significant investment in wastewater infrastructure is required. At present, there is limited wastewater treatment and transport capacity in this area, with only small treatment facilities located in Flagstone and Jimboomba.

In 2016, a *Logan South Wastewater Servicing Strategy* was prepared by Cardno for Economic Development Queensland (EDQ) to guide sustainable infrastructure development for southern Logan. This strategy, which was subsequently endorsed by Council, identified the most viable option for providing wastewater infrastructure involved construction of two new permanent wastewater treatment plants (WWTPs). The strategy recommended a new WWTP at Cedar Grove (on a site owned by Council) to service the Greater Flagstone PDA and potentially Jimboomba, and a second site (called WWTP B in the strategy) to service the development corridor stretching from Park Ridge to Yarrabilba.

In 2017, Council's Logan Water Infrastructure Alliance conducted further work including a *Greenbank Wastewater Servicing Strategy* which identified the potential to divert flows from the growing Greenbank and North Maclean areas to the Cedar Grove WWTP. The team also began to consider a preliminary study area, criteria and constraints for the new facility (WWTP B).

2.2 Funding arrangements

The new facility will be fully funded by developer contributions in the form of infrastructure charges.

For PDAs, such as Yarrabilba, infrastructure charges are payable to EDQ. EDQ distributes the revenue to Council under the provisions of an Infrastructure Agreement. For development areas shown in Council's planning scheme, such as the Park Ridge development area, infrastructure charges are payable to Council. Council uses these reserved funds to construct infrastructure as required.

2.3 Potential scope of works

The new wastewater treatment facility (WWTP B) will service the development corridor extending from Park Ridge to Yarrabilba. The first stage of the plant will have a capacity of approximately 20,000 equivalent persons (EP), with an ultimate capacity of around 121,000 EP (noting that population and residential density forecasts change regularly, and this affects the forecast capacity of the plant). There is no concept design for the facility as yet, although it could include:

- inlet works
- a bioreactor system
- an integrated membrane system
- a chemical dosing unit
- an administration building
- a blower building / switchboard building
- a switchroom
- an electrical substation
- a solar array
- aerobic sludge digestion and dewatering (centrifuge)
- an effluent management system such as constructed wetlands or an irrigation area
- an effluent discharge pipeline
- a buffer between structures and adjacent residential / commercial properties
- potential community facilities around the facility / in the buffer such as walking trails or sports facilities.

Council estimates that approximately 10 hectares of land is required to build the facility, with an additional 550m surrounding this for a buffer between the facility and developed areas.

2.4 Location

The map on the following page shows the catchments to be serviced by the new facility. While the site is yet to be determined, the criteria for selecting a site for the facility include:

- near the development areas it will service
- sufficient flood free area for key structures
- availability of a buffer between structures and surrounding development
- near a place where highly treated water from the facility can be released such as a waterway, irrigation area or a business area where the water can be used.

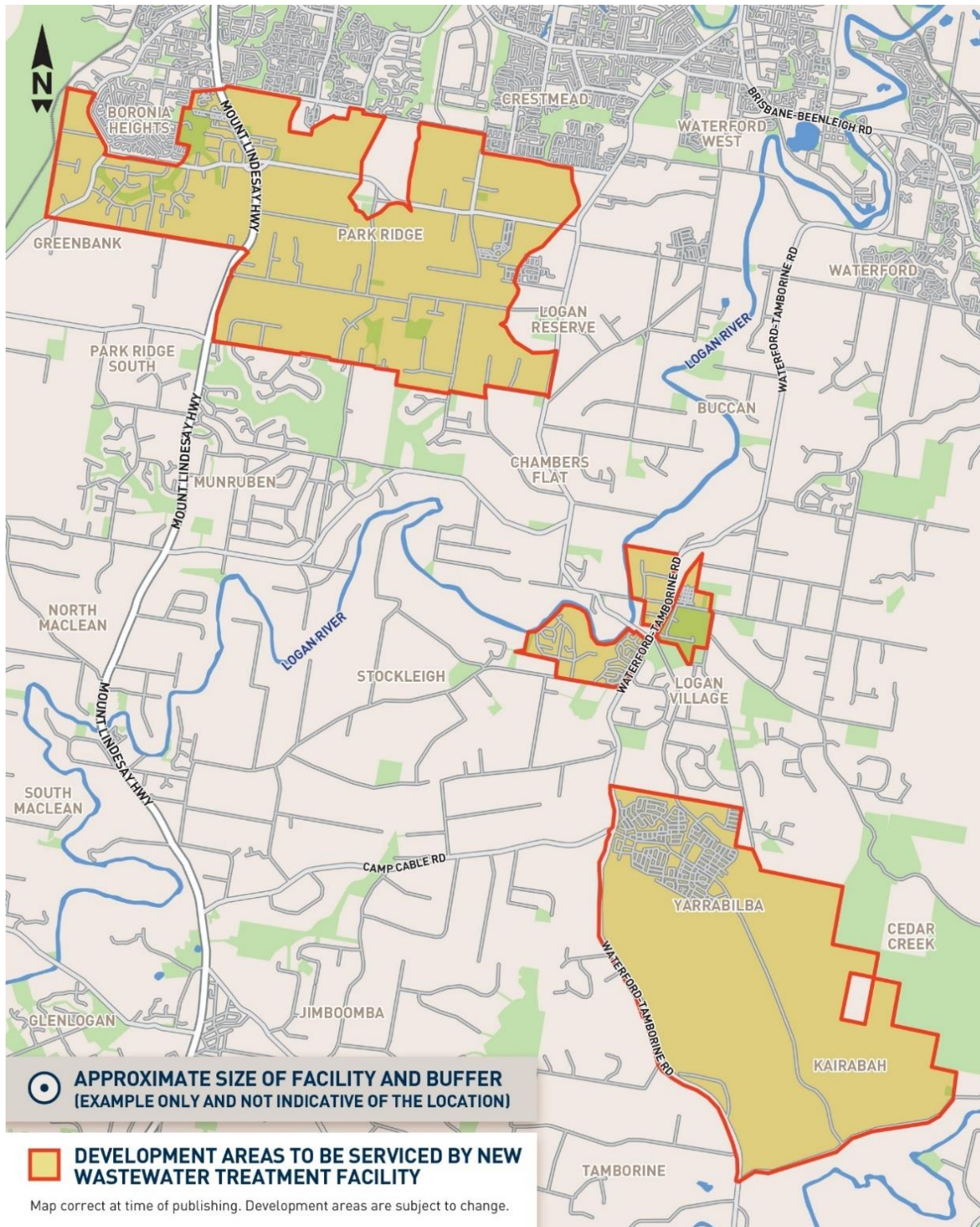


Figure 2: Areas to be serviced by the new wastewater treatment facility

3. Consultation Process

3.1 Process overview

Several wastewater servicing strategies and desktop planning studies have been undertaken in the past five years for EDQ or Council to help identify wastewater servicing options for southern Logan.

Council has not yet identified a preferred site for a wastewater treatment facility to service growth in the Park Ridge to Yarrabilba corridor. As a core input into decision-making about a site, Council decided (in May 2018) to seek community input on its search. In doing so, Council aimed to:

- share information with community members about the opportunities and constraints of locating a new facility in a growing rural residential and urban corridor
- obtain feedback on issues that Council should consider when making decisions about the location of the new facility.

An initial six-week consultation period occurred from 9 July to 20 August 2018. Further consultation opportunities will be provided as the project progresses. The diagram below summarises Council's approach to consultation for this project.

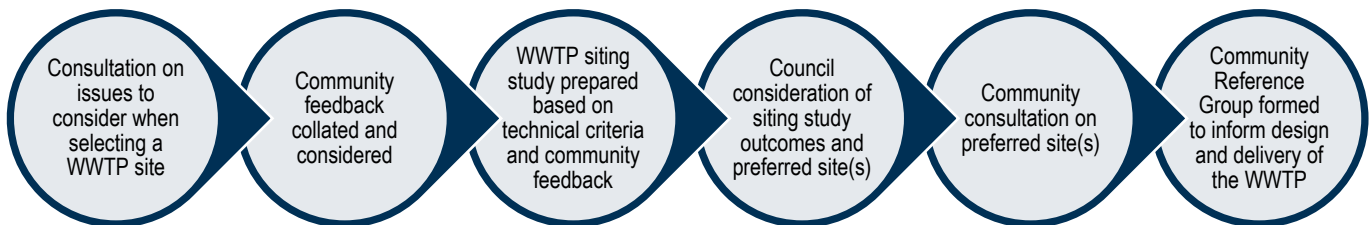


Figure 3: Consultation process

3.2 Initial consultation activities

From 9 July to 20 August 2018, a range of communication and engagement materials and events were distributed / implemented to seek feedback from stakeholders located in, or interested in, the Park Ridge to Yarrabilba corridor. These materials and events are summarised in the following table, and copies of materials are provided in Appendix A of this report.

Activity / material	Scope	Target audience
Direct mail letter	9,733 letters announcing the project and listing opportunities to provide feedback	Residents, businesses and owners of properties in the area shown in Figure 4

Activity / material	Scope	Target audience
Media briefing	Face-to-face briefing	Logan media representatives
Media releases	Releases announcing the start and the close of consultation	South East Queensland media representatives
Social media posts	Posts on Council's Facebook and Twitter platforms	Logan community
Direct email	Emails containing a project letter and fact sheet, and an invitation to provide feedback	Elected representatives Environmental groups Traditional Owner groups Community groups Business groups Developers
Have your Say site	Online consultation site on Council's website including project information, an interactive map and a survey	Logan community
Project web page	Web page on Council's website including project information and a link to the Have your Say site	Logan community
Drop-in information stalls	Staffed information stalls on three Saturday mornings at Logan Village, Stockleigh and Chambers Flat	Residents, businesses and owners of properties in the area shown in Figure 4
Responses to enquiries and comments	Responses to phone, email and social media enquiries (posted on Council's Facebook page), complaints and comments	Residents, businesses and owners of properties in the area shown in Figure 4
Stakeholder meetings	Meetings (on request) with parties seeking more information about the project and associated business opportunities	Agricultural businesses

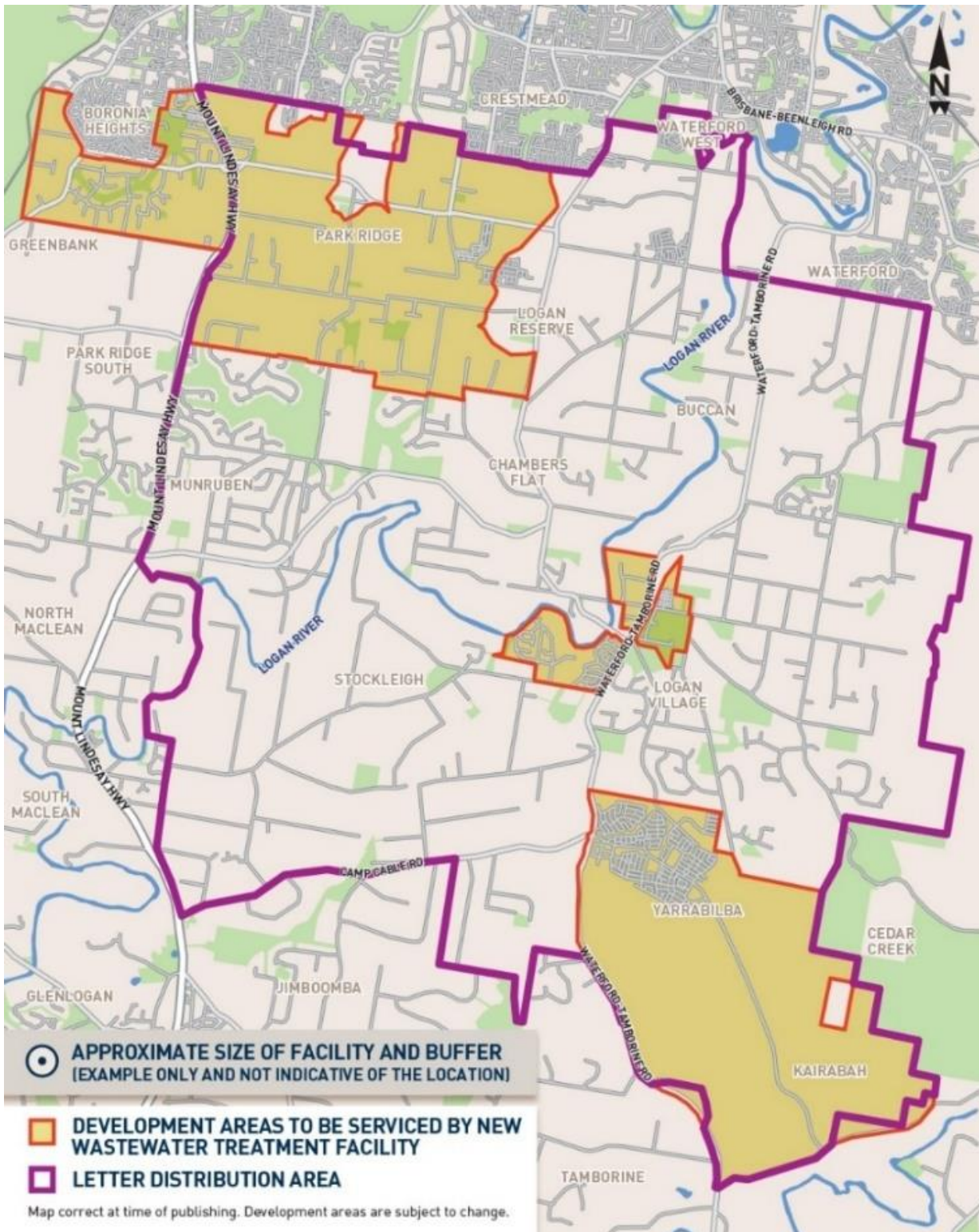


Figure 4: Map showing distribution area for the direct mail

4. Feedback received

4.1 Feedback channels

Throughout the consultation period, Council received formal and informal feedback from community members, business representatives and other stakeholders about the search for a site for a new wastewater treatment facility. Feedback was provided via these channels:

Channel	Type of feedback	Outcome
Have your Say site	Formal: comments pinned to project map and completed surveys	Of the 907 visitors to the Have your Say site, 38 people pinned 62 comments to the map and 70 people completed surveys* <i>*Note: all completed hard copy surveys were manually added to this site</i>
Local media	Informal: reported comments by individuals	19 newspaper or online articles in the <i>Albert and Logan News</i> , <i>Jimboomba Times</i> , <i>The Courier-Mail</i> , <i>Sunday Mail</i> and <i>Gold Coast Bulletin</i> One ABC 612 radio interview with Council's Chairperson of the City Roads and Water Committee, Cr Phil Pidgeon
Social media posts and comments	Informal: comments by individuals and representatives of community groups	Hundreds of posts and comments on Council's, <i>Jimboomba Times</i> , Logan Village Watch's, Logan Village Museum's, Cr Phil Pidgeon's, Cr Laurie Koranski's and other Facebook pages
Drop-in information stalls (face-to-face discussions)	Informal: verbal questions and comments Formal: completion of hard copy surveys, and offers of private property (for sale) to Council	A total of approximately 220 people visited the information stalls Completed hard copy survey forms were provided to Council officers, and details of private properties for sale registered
Phone, mail and email	Formal: enquiries, complaints and comments to the project team, and offers of private property (for sale) to Council	75 calls, emails or mailed letters from local residents or non-resident property owners Records of all calls, emails, letters and private properties for sale were retained
Personal presentation of a petition	Formal: petition and letter	A petition containing 1,361 signatures and a covering letter were provided to the Acting Mayor and CEO to protest perceived potential impacts on Stockleigh properties
Meetings	Formal: meeting at Council	One meeting was held to discuss potential future opportunities to co-locate an agricultural business with the treatment facility, and the legislative framework relating to use of treated wastewater for irrigation

4.2 Feedback themes

Based on all formal feedback received by the project team, the top ten themes / issues for consideration by Council were:

1. **“No to Stockleigh”**: Residents in Stockleigh do not support the acquisition of private properties shown as ‘preferred sites’ for wastewater treatment facilities in Cardno’s 2016 wastewater servicing strategy prepared for EDQ.
2. **“Make developers incorporate treatment facilities”**: New development areas, such as Yarrabilba, should incorporate their own wastewater treatment facilities (with many respondents nominating Yarrabilba or areas immediately south of Yarrabilba as potential locations for the facility).
3. **“Don’t affect our rural lifestyle”**: Any new wastewater treatment facility could adversely affect the existing rural residential lifestyles of residents in Logan Village, Stockleigh and Chambers Flat.
4. **“Don’t affect areas not being serviced”**: As the new facility is unlikely to directly benefit most rural residential properties, it should not be in an existing rural residential area.
5. **“Protect the environment and our crops”**: A new wastewater treatment facility should not adversely affect the local environment or agricultural businesses.
6. **“Avoid impacts on neighbours”**: A new wastewater treatment facility should not result in odour, light, noise or traffic impacts on residents.
7. **“Negotiate to buy land / buy my land”**: Purchase of land by agreement with property owners is preferred, rather than compulsory acquisition. Private land has been offered to Council (for sale) for the purposes of establishing a wastewater treatment facility.
8. **“Ongoing consultation is needed”**: Residents would like extended opportunities for consultation about the treatment facility location and design.
9. **“Don’t affect local land values”**: A new wastewater treatment facility should not be placed in a location that adversely affects local property values.
10. **“Protect our waterways”**: A new wastewater treatment facility should not have adverse impacts on local flooding or water quality in local rivers / waterways.

4.3 Feedback by channel

More detailed information on the formal feedback received by the project team via different channels is provided in this section.

Have your say site

The key themes from all comments pinned to a map of the development corridor (Park Ridge to Yarrabilba) in descending order of mentions were:

- **“Put it at Yarrabilba”**: Yarrabilba or areas immediately south of Yarrabilba were nominated as potential locations for the new facility, with most comments indicating that new development areas should incorporate their own wastewater treatment facilities.
- **“Don’t affect areas not being serviced”**: Comments indicated that as the new facility was unlikely to directly benefit most rural residential properties, it should not be located in an existing rural residential area. There were specific mentions of Logan Village and Stockleigh as being undesirable locations.
- **“Integrate with existing land uses”**: Existing industrial or agricultural locations in Logan Village (near the waste management facility on Waterford-Tamborine Road), Logan Reserve (at the airstrip or Deer Lane area) or Chambers Flat (agricultural areas such as Pleasant View Road) were suggested as potential locations for the facility, based on the potential to integrate existing land uses with the facility.
- **“Protect our waterways”**: A new wastewater treatment facility should not have adverse impacts on local flooding or water quality in local rivers / waterways.
- **“I want to know more about design of the facility”**: Some questions were raised about the possible design of the facility, technologies to be used and whether Council had already pre-selected a site.

Of the 70 people who participated in a survey on the Have your Say site (or completed this in hard copy and data was added manually to the site), most lived / worked in Logan Village, Stockleigh or Chambers Flat. There was less involvement from people in Park Ridge, Park Ridge South and Logan Reserve, and no known involvement from people in Yarrabilba.

Based on survey data, efficient wastewater services which operate with minimal impacts on community members and the environment were priorities for participants (Figure 5).

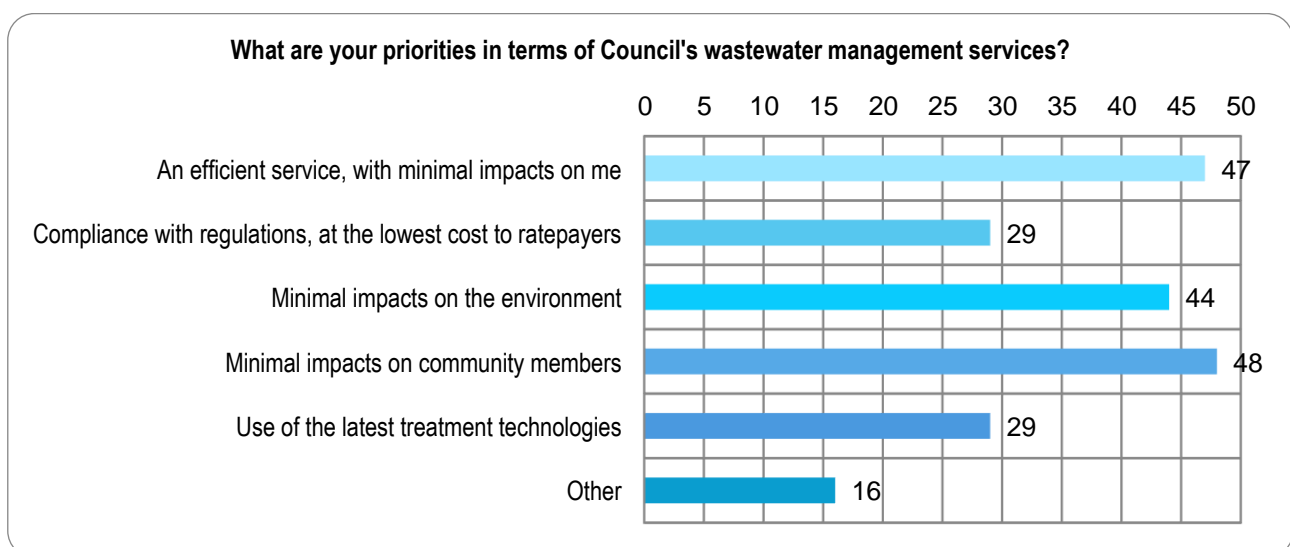


Figure 5: Graph showing survey respondents' priorities in terms of wastewater management services

When selecting a site for a new wastewater treatment facility, participants believed Council should consider impacts on property values, proximity to the areas which require wastewater services, availability of a buffer between the facility and residents, community health and safety, and current land ownership (Figure 6).

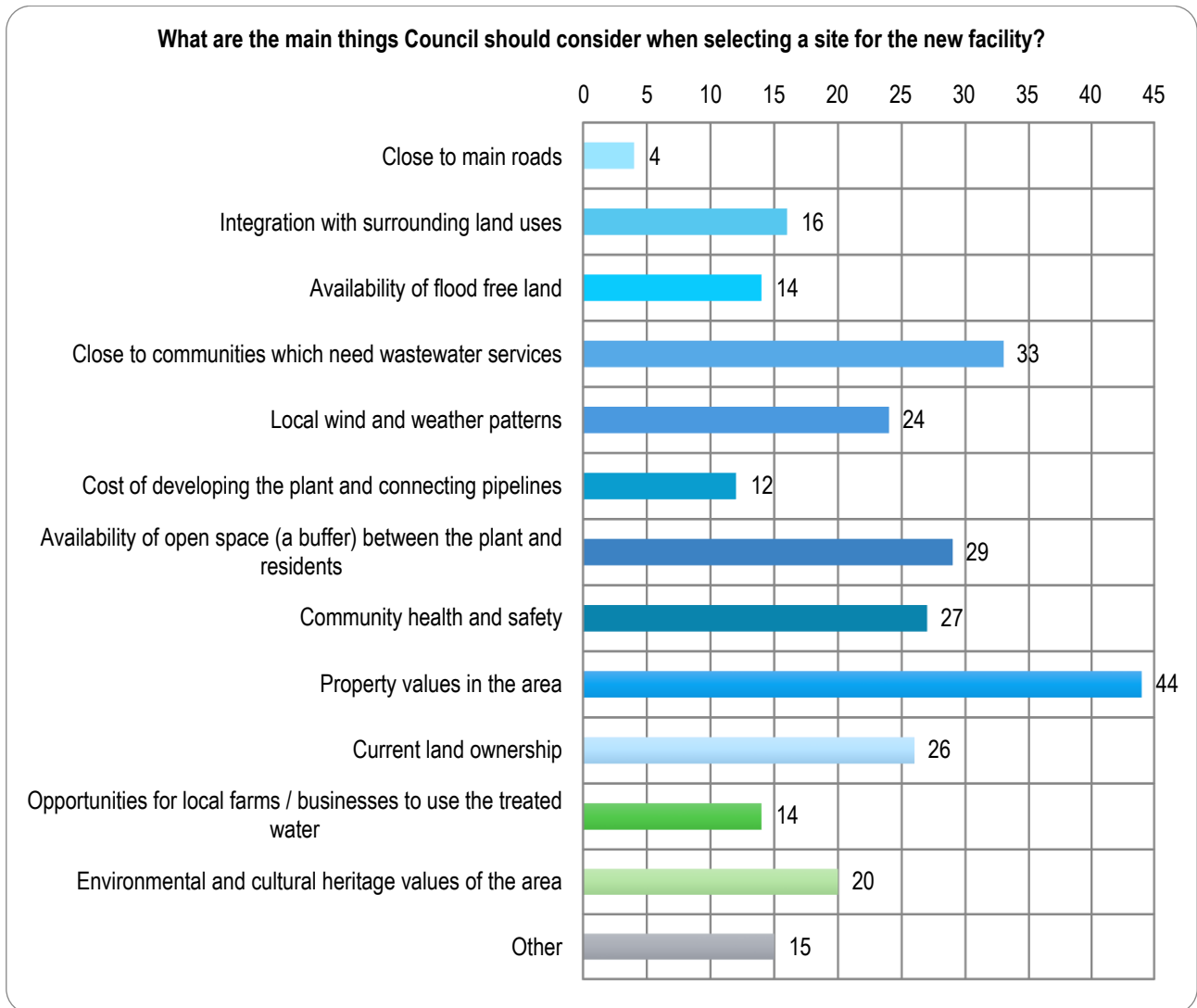


Figure 6: Graph showing things that Council should consider when selecting a site

Participants considered that a wastewater treatment facility would be a good neighbour if odours were effectively managed, the facility was screened from view / visually appealing, the site adequately contained all wastewater flows with no overflows, and the equipment operated with minimal noise (Figure 7).

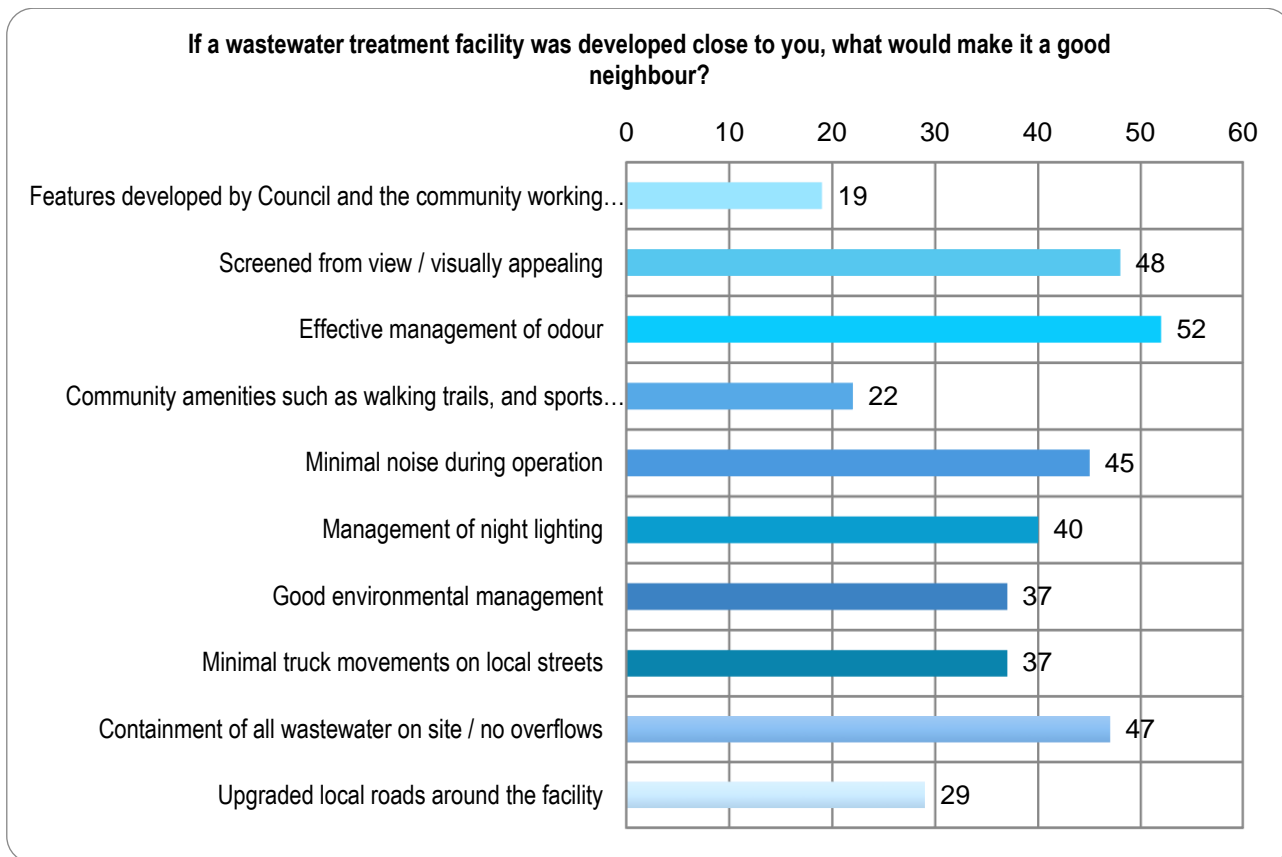


Figure 7: Graph showing things survey respondents believe would make a wastewater treatment facility a good neighbour

Comments provided in the ‘additional feedback’ section of the survey were generally consistent with the comments pinned to the interactive map on the site. Key themes were:

- **Don’t affect our rural lifestyle**”: Any new wastewater treatment facility could adversely affect the existing rural residential lifestyles of residents in areas such as Tamborine, Logan Village, Buccan, Stockleigh and Chambers Flat.
- **“Make developers incorporate treatment facilities”**: New development areas, such as Yarrabilba, should incorporate their own wastewater treatment facilities.
- **Don’t affect areas not being serviced**”: As the new facility is unlikely to directly benefit most rural residential properties, it should not be in an existing rural residential area.
- **“Don’t affect local land values”**: A new wastewater treatment facility should not be placed in a location that adversely affects local property values.
- **“Protect our waterways”**: A new wastewater treatment facility should not have adverse impacts on local flooding or water quality in local rivers / waterways.

- **“Upgrade existing WWTPs instead”**: Transfer flows to Loganholme WWTP for treatment or upgrade existing local WWTPs rather than constructing a new one.

Drop-in information stalls

Information stalls at Logan Village (Figure 8), Stockleigh (Figure 9) and Chambers Flat (Figure 10) provided opportunities for individuals, family groups and business representatives to speak with Councillors and Council officers, ask questions about the project, and offer their feedback on wastewater servicing for southern Logan.

While most of the discussion at information stalls was informal, Council officers reported several key themes:

- **“Don’t affect our rural lifestyle”**: Any new wastewater treatment facility could adversely affect the existing rural residential lifestyles of residents in Logan Village, Stockleigh and Chambers Flat.
- **“No to Stockleigh and Logan Village”**: Residents of Logan Village and Stockleigh were generally opposed to the location of a treatment facility in their suburbs. At the final information stall in Chambers Flat, several Stockleigh residents protested Council’s perceived pre-selection of local properties shown as ‘preferred sites’ for wastewater treatment facilities in Cardno’s 2016 wastewater servicing strategy prepared for EDQ.
- **“Make developers incorporate treatment facilities”**: New development areas should incorporate their own wastewater treatment facilities.
- **“Protect the environment and our crops”**: A new wastewater treatment facility should not adversely affect the local environment or agricultural businesses. Conversely, some attendees had specific questions about the composition / quality of treated water from the facility with a view to irrigating crops or pasture with the water.
- **“Buy my land”**: At each event, one or more property owners approached Council officers to register interest in selling their land to Council for the purposes of establishing a new wastewater treatment facility. Most offers were followed up with a phone call or email from the owner (refer to page 19).



Figure 8: Drop-in information stall at Logan Village Shopping Centre, Logan Village



Figure 9: Drop-in information stall on the corner of Stockleigh Road and Pepperina Drive, Stockleigh



Figure 10: Drop-in information stall at Chambers Flat Strawberry Farm, Chambers Flat

Phone, mail and email

Phone, mail and email contact with Councillors and Council's project team provided individuals with opportunities to clarify the project purpose and timing, ask questions about potential impacts of a new wastewater treatment facility on them, offer land to Council for the facility, provide feedback, or complain about aspects of the consultation process. Key themes from these channels were:

- **“No to Stockleigh”**: Residents of Stockleigh and surrounding areas sent ‘protest’ emails about the perceived pre-selection of local properties for the new facility (shown as ‘preferred sites’ for wastewater treatment facilities in Cardno’s 2016 wastewater servicing strategy prepared for EDQ).
- **“No to Logan Village”**: Residents of Logan Village were generally opposed to the location of a treatment facility in their suburb.
- **“Buy my land”**: Thirteen parties registered their interest in selling 19 parcels of land (and potentially others) to Council for the purposes of establishing a new wastewater treatment facility.
- **“Will I need to connect to the new WWTP?”**: A key question from residents living on rural residential properties was whether they would need to, or be ‘forced’ to, connect to the new facility.
- **“Make developers incorporate treatment facilities”**: New development areas should incorporate their own wastewater treatment facilities.
- **“We don’t trust the consultation process”**: Some residents expressed concern that Council may already have selected a site, and that consultation was not transparent. Others had feedback about preferred methods of consultation.

Petition

Representatives of the Logan River Protection Group attended Council's Administration Centre in Logan Central to present a letter and a petition to the Acting Mayor and Chief Executive Officer. The letter requested that "all proceedings relating to new wastewater treatment facilities be halted until residents have been adequately consulted" and posed questions about the potential location, design and operation of the future treatment facility.

The petition, signed by 1,361 people, was to protest a (perceived) proposed treatment facility on several private properties at Stockleigh.

Meeting

A meeting was requested by the owner of a Logan-based agricultural business who expressed an interest in future co-location of the business with the wastewater treatment facility. This would provide the business with access to an abundant supply of quality treated water for irrigation, and opportunities to develop and grow the business and employ local people.

5. How feedback will be used

Community and stakeholder feedback from the initial consultation period (as summarised in this report) will be used by Council in several ways:

- This report will be presented to Logan City Councillors and Logan Water managers for information and review.
- This report will be tabled for information purposes at a City Roads and Water Committee meeting. Following the meeting, it will be available for community members to view on Council's website (as part of the minutes of the City Roads and Water Committee meeting).
- All private properties offered to Council (for sale) during the initial consultation period, those currently on the market, and any relevant properties previously identified in wastewater servicing strategies for southern Logan will be investigated to determine if they may be suitable for the purposes of establishing a wastewater treatment facility. For example, Council may consider their size, proximity to the areas that require wastewater services, availability of flood free land for structures, availability of a buffer between structures and existing residences, and proximity to a place where highly treated water from the facility can be released such as a waterway, irrigation area or a business area where the water can be used.
- This report will form part of a siting study prepared by Council's Logan Water Infrastructure Alliance. The study is expected to identify and review potential sites for the wastewater treatment facility.

As part of the study, community and stakeholder feedback may be used to develop social criteria for a multi-criteria analysis of potential sites for the facility. Typically, multi-criteria analyses seek to assess and rank options against a range of cost and non-cost related criteria such as: capital cost and whole-of-life cost; construction and operational impacts on the community; construction and operational impacts on the environment; incident risk and vulnerability; ease of construction; ease of operation and maintenance; and community and workforce health and safety during construction and operation.

After the study has been presented to Council's City Roads and Water Committee for review and adopted at an Ordinary Council meeting, it will be made available to community members to view (at a time to be determined).

6. Appendix – communication materials

Enquiry Phone: 07 3412 9609
File No: 957063-1
Document Reference: 12090261



6 July 2018

150 Wembley Road
Logan Central QLD 4114
PO Box 3226 Logan City DC QLD 4114

«Barcode»

«Property_Owner_Name_»
«Postal_Address»
«Postal_Suburb_»

Council enquiries **07 3412 3412**
Fax **07 3412 3444**
Email council@logan.qld.gov.au
Web www.logan.qld.gov.au
ABN 21 627 796 435

Dear Resident/Owner

SEARCH FOR A SITE – STATE-OF-THE-ART WASTEWATER TREATMENT FACILITY

Council has begun the search for a site for a state-of-the-art wastewater (sewage) treatment facility.

This facility is needed to service the development corridor which extends from Park Ridge to Yarrabilba. As development progresses and the population increases in this corridor, additional critical infrastructure such as wastewater treatment facilities and trunk pipelines is required.

Approximately 10 hectares of land is required to build the treatment facility, with an additional 550m surrounding this for a buffer between the facility and developed areas. The site needs to:

- be near the development areas it will service (refer to map overleaf)
- have a sufficient flood free area for the main structures
- be near a place where highly treated water from the facility can be released such as a waterway, irrigation area or a business area where the water can be used.

There is also the opportunity to incorporate community amenities as part of this project.

Council is co-funding this project with the Queensland Government and coordinating it in consultation with regulatory authorities and community members.

As a resident in the consultation area for this project (refer to map overleaf), you are encouraged to provide your insights and suggestions on what Council needs to consider when finding a suitable location for this state-of-the-art wastewater treatment facility.

An initial community consultation period commences 9 July 2018 and closes on 20 August 2018.

You can view project information, add comments to an interactive map and complete a survey on the 'Have Your Say' pages on Council's website at <http://haveyoursaylogan.engagementhq.com/>.

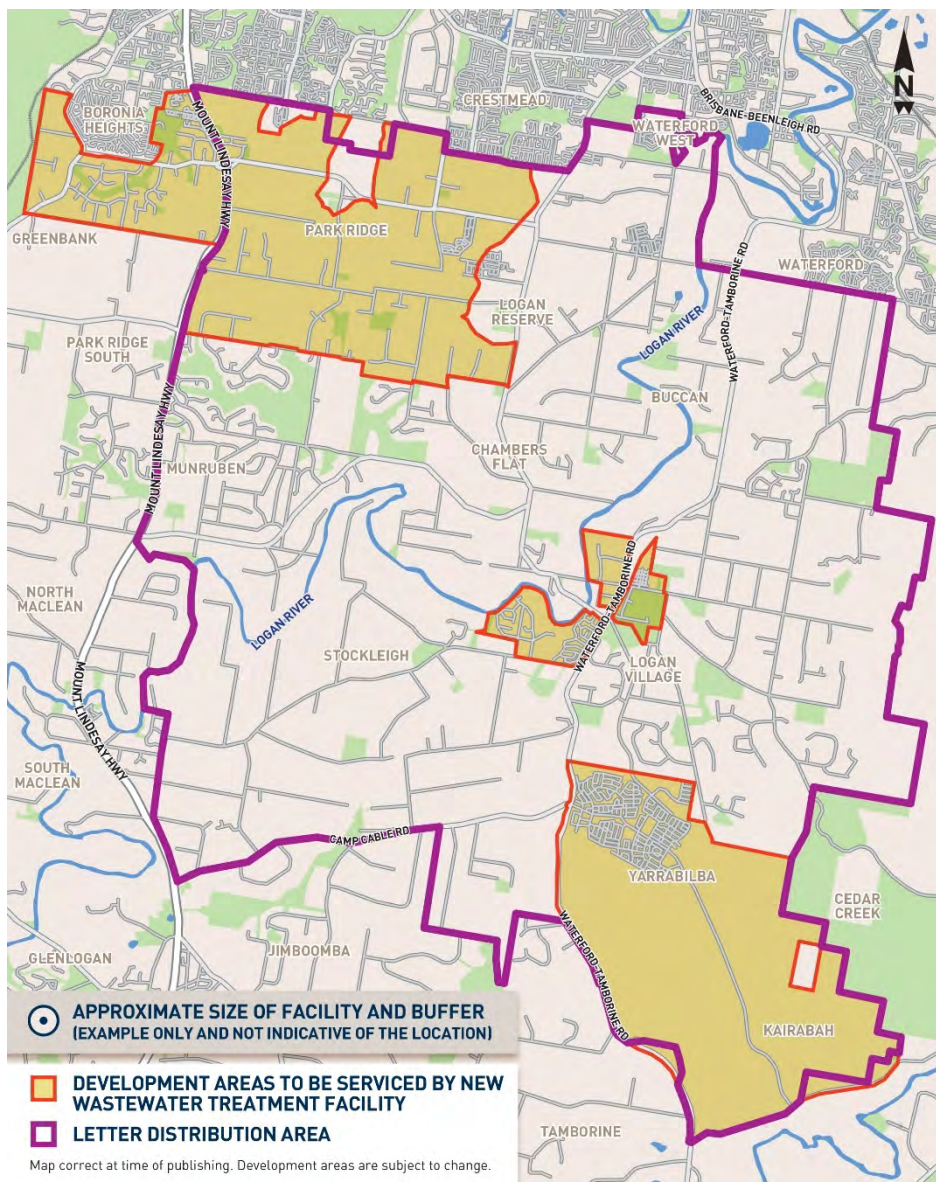
If you would prefer to talk with a Council officer in person about this project, you are welcome to attend a community information stall on:

Date	Location	Time
Saturday 21 July 2018	Logan Village Shopping Centre Cnr Albert Street and North Street Logan Village	9am to 11am
Saturday 4 August 2018	Cnr Stockleigh Road and Pepperina Drive Stockleigh	9am to 11am

Date	Location	Time
Saturday 11 August 2018	Chambers Flat Strawberry Farm 912 Chambers Flat Road, Chambers Flat	9am to 11am

There will be further opportunities to provide feedback about this project as it progresses.

Project map



If you have any questions about this information, please phone Council's Logan Water Infrastructure Alliance community engagement team on 07 3412 9609 or email community@loganwia.com.au.

Yours faithfully

Tony Goodhew
Acting DIRECTOR, ROAD & WATER INFRASTRUCTURE

MEDIA RELEASE

6 July 2018

Community input invited for treatment plant site options

The Logan community is being invited to have its say about finding a location for a new wastewater treatment plant in the city's south.

Logan City Council City Roads and Water Committee Chairman, Councillor Phil Pidgeon, said the wastewater (sewage) treatment plant was needed in the next three to four years to meet the needs of the city's rapidly-increasing population.

"The development corridor from Park Ridge to Yarrabilba is growing, and Council needs to ensure essential infrastructure is in place," he said.

"Council previously endorsed a plan to build two new treatment plants in the southern suburbs of Logan – one is already planned at Cedar Grove, and now we are looking for a site for the second plant to service new development at Yarrabilba, Logan Village, Chambers Flat and most of Park Ridge.

"At this stage there are no Council-owned sites that meet all of the criteria for what Council will need, and we are hoping the community can give us feedback on how to go about identifying an appropriate location.

"I want to make it clear that Council does not have any clear options on the table."

Cr Pidgeon said Council wanted to find a site that had minimal community impacts while also being technically viable.

"Council knows that living near a treatment plant is not usually high on anyone's wish list, but we want to find the best site possible with the help of insights and suggestions from residents," he said.

"Council will need about 10 hectares of land to build the state-of-the-art facility, and there will be an approximate 550 metre buffer zone on top of that to minimise residential impacts."

Residents can have their say from 9am on Monday, July 9, until 5pm on Monday, August 20.

"It's really important to stress that Council doesn't have a list of sites that people can vote for or comment on," Cr Pidgeon said.

"We want to listen to community members and get their feedback.

Date:	06/07/2018	Issued by:	Rebecca Waters Media & Communication Officer Logan City Council
Use by date:	31/08/2018	Contact:	xxcontactxx
Doc ID:	Doc #12075651	Email:	rebeccawaters@logan.qld.gov.au
		Phone:	(07) 3412 4513

"You can provide your thoughts online or attend one of our information stalls for more information."

Online consultation opens at <https://haveyoursaylogan.engagementhq.com/> from Monday, July 9.

Information stalls will be held at:

Date	Location	Time
Saturday, July 21	Logan Village Shopping Centre, Waterford-Tamborine Rd, Logan Village	9am to 11am
Saturday, August 4	Cnr Stockleigh Rd and Pepperina Dr, Stockleigh	9am to 11am
Saturday, August 11	Chambers Flat Strawberry Farm, 912 Chambers Flat Rd, Chambers Flat	9am to 11am

Quick facts

- The first stage of the treatment plant will service approximately 20,000 people.
- Ultimately, the treatment plant will cater for up to 121,000 people.
- The first stage is projected to cost around \$40 million and could be operational by late 2021, depending on funding and approvals.
- The facility will be jointly funded by Council and the Queensland Government via Economic Development Queensland. Council will be the project manager.



**Council invites you
to have your say
on Logan's newest
wastewater
treatment facility**



To provide your feedback head to:
haveyoursaylogan.engagementhq.com

Search for a site for Logan's newest wastewater treatment facility

The initial consultation period has now closed. Updates will be provided here and on the 'Water Major Projects' page of Logan City Council's website in the coming months.

What is important to consider when selecting a new location for a wastewater (sewage) treatment facility?

This facility is needed to service the development corridor which extends from Park Ridge to Yarrabilba. As development progresses and the population increases in this corridor, additional critical infrastructure such as wastewater treatment facilities and trunk pipelines is required.

Approximately 10 hectares of land is required to build the facility, with an additional 550m surrounding this for a buffer between the facility and developed areas. The site needs to:

- be near the **development areas** it will service
- have a sufficient flood free area for key structures
- be near a place where highly treated water from the facility can be released such as a waterway, irrigation area or a business area where the water can be used.

There is also the opportunity to incorporate community amenities as part of this development, such as walking trails or recreational areas.

Council is co-funding this project with the Queensland Government and coordinating it in consultation with regulatory authorities and community members. Council's Logan Water Infrastructure Alliance will undertake all planning and design activities.

We encourage you to provide your insights and suggestions on what Council needs to consider when finding a location for this wastewater treatment facility. View the project information, then add your comments to the map and complete a survey.

Consultation closed on 20 August 2018.

[ADD FEEDBACK](#)

[TAKE SURVEY](#)



Select Language

Select Language ▼

Photos



more..

Videos



more..

Key Dates

Wastewater treatment facility information stall - Logan Village
21 July 2018

Wastewater treatment facility information stall - Stockleigh
04 August 2018

Wastewater treatment facility information stall - Chambers Flat Strawberry Farm
11 August 2018

Life Cycle



Consultation is open

This consultation is open for contributions. Provide your insights and suggestions on what Council needs to consider when finding a location for its newest wastewater treatment facility.

What should Council consider when selecting a site?

9 days





[Home](#) > [Environment, Water & Waste](#) > [Water](#) > [Major Projects](#)

Major Projects

Information about our major infrastructure and research projects are provided below.

Wastewater treatment facility to service Park Ridge to Yarrabilba development corridor

Council has begun the search for a site for a state-of-the-art wastewater (sewage) treatment facility.

This facility is needed to service the development corridor which extends from Park Ridge to Yarrabilba. As development progresses and the population increases in this corridor, additional critical infrastructure such as wastewater treatment facilities and trunk pipelines is required.

Approximately 10 hectares of land is required to build the treatment facility, with an additional 550m surrounding this for a buffer between the facility and developed areas. The site needs to:

- be near the [development areas \(PDF 968 KB\)](#) it will service
- have a sufficient flood free area for key structures
- be near a place where highly treated water from the facility can be released such as a waterway, irrigation area or a business area where the water can be used.

There is also the opportunity to incorporate community amenities as part of this project.

Council is co-funding this project with the Queensland Government and coordinating it in consultation with regulatory authorities and community members. Council's Logan Water Infrastructure Alliance will undertake all planning and design activities.

Have your say

Council's 'Have your say' survey has now closed.

There will be further opportunities to provide feedback about this project as it progresses.

Information materials

[Locality Map \(PDF 968 KB\)](#)

[Info Sheet \(PDF 502 KB\)](#)

Frequently Asked Questions

[FAQs 24 July 2018 \(PDF 106 KB\)](#)

More information

If you have any questions about this project, please phone Logan Water Infrastructure Alliance's community engagement team on 07 3412 9609 or email community@loganwia.com.au.

Environment, Water & Waste

- > [Environmental Programs](#)
- > [Pest Management & Biosecurity](#)
- > [Plants](#)
- > [Sustainable Living](#)
- > [Waste & Recycling](#)
- ▼ [Water](#)
 - > [About Water](#)
 - > [Business Customers](#)
 - > [Community and Education](#)
 - > [Contact Us](#)
 - > [Fact Sheets, Forms, Frequently Asked Questions](#)
 - ▼ [Major Projects](#)
 - > [Private Works - Water and Wastewater](#)
 - > [Residential Customers](#)
 - > [Water Meter Connections & Disconnections](#)
- > [Waterways](#)
- > [Wildlife](#)

Logan South wastewater treatment facility

Have Your Say Logan - FAQs

This document presents Council's FAQs about the search for a site for a wastewater treatment facility as presented on the 'Have Your Say Logan' website:

<https://haveyoursaylogan.engagementhq.com/>

PROJECT OVERVIEW AND MANAGEMENT

1. Why is a new wastewater treatment facility needed?

The City of Logan is one of Australia's fastest growing cities. A key development corridor extends from Park Ridge to Yarrabilba. As development progresses and the population increases in this corridor, additional critical infrastructure such as wastewater treatment facilities and trunk pipelines is required.

2. There is already a proposed treatment facility at Cedar Grove, why not use it?

The proposed treatment facility at Cedar Grove is to cater for growth in the Greater Flagstone, Greenbank and Jimboomba areas.

3. Who is managing this project?

Council is co-funding this project with the Queensland Government and coordinating this project in consultation with regulatory authorities and community members.

Council's Logan Water Infrastructure Alliance will undertake all planning and design activities.

4. What is the development timeframe?

Planning of the new wastewater treatment facility including selection of a preferred site will be conducted in 2018/19.

Following engineering design, funding and approvals, construction of the treatment facility and connecting trunk pipelines will occur in stages.

Current planning suggests that the first stage of the treatment facility is required by late 2021 to service development.

5. Where will the wastewater treatment facility be located?

Council is investigating potential locations for a new wastewater treatment facility in the development corridor extending from Park Ridge to Yarrabilba.

Approximately 10 hectares of land is required to build the facility, with an additional 550m surrounding this for a buffer between the facility and developed areas. The site needs to:

- be near the development areas it will service
- have a sufficient flood free area for key structures
- be near a place where highly treated water from the facility can be released such as a waterway, irrigation area or a business area where the water can be used.

Logan South wastewater treatment facility

Have Your Say Logan - FAQs

6. I have heard there is a report with pre-determined sites selected - is this true?

No. A report titled the *Logan South Wastewater Servicing Strategy* was prepared by Cardno for Economic Development Queensland in May 2016. This strategy was a desktop options analysis and technical review.

As noted in the Executive Summary of the document, the strategy's purpose was to consolidate and resolve differences between previous planning activities and recommend a preferred servicing strategy for the region.

The strategy considered a range of wastewater servicing options and potential sites for wastewater treatment. These sites were selected according to technical criteria and were not progressed beyond desktop analysis. The term 'preferred' in relation to various sites does not imply selection of any site; simply that at the time of writing the strategy, Cardno considered that the sites met a range of technical criteria.

The report was presented to Council in June 2016 at which time Council endorsed the strategy as the basis for providing wastewater infrastructure, but did not resolve to adopt the report's recommendations subject to further investigations and EDQ funding.

A copy of this report can be found in the Document Library section of this site: <https://haveyoursaylogan.engagementhq.com/35547/documents/83026>

7. Who will approve the development of the new infrastructure and when?

A range of approvals apply to aspects of the infrastructure development. For example, if the location of the facility is within a Queensland Government Priority Development Area (PDA) such as Yarrabilba, funding approval and overall acceptance of the type, location and capacity of infrastructure are coordinated by Economic Development Queensland. If the location of the facility is not within a PDA, Logan City Council will coordinate necessary funding and approvals. Environmental approvals / licenses are provided by the Department of Environment and Science.

PROJECT NEEDS / BENEFITS

8. How will the Logan community benefit from this new wastewater infrastructure?

The main project benefits and opportunities for Logan's economy, environment and community are:

- Essential services for growing communities in the city's central to southern corridor.
- Development of sustainable infrastructure that minimises lifecycle costs, energy use, greenhouse gas emissions, potential wastewater overflows and odours.
- Local employment and skills development during delivery and operation of new infrastructure. Local construction companies and suppliers will be used wherever possible.
- Potential opportunities to enhance local community facilities and wildlife habitat as part of the development.

WASTEWATER TREATMENT FACILITY DESIGN

9. What type of wastewater treatment facility is it likely to be?

The project is in the early planning phase and as yet there is no concept design. However, the state-of-art wastewater treatment facility is likely to use modern membrane bioreactor (MBR) technology.

Logan South wastewater treatment facility

Have Your Say Logan - FAQs

MBRs consist of fine screening, denitrification and nitrification zones, biological and chemical phosphorous removal, which is then followed by membrane treatment and disinfection. MBR technology provides optimal outcomes for residents in relation to quality of the treated water, odour controls, operability, maintenance and costs.

10. What does the facility look like?

Modern wastewater treatment facilities are generally unobtrusive structures. While there is no concept design for this facility yet, it may include these components:

- inlet works
- a bioreactor system
- an integrated membrane system
- aerobic sludge digestions and dewatering (centrifuge)
- a chemical dosing unit
- an administration building
- a blower building / switchboard building
- a switchroom
- an electrical substation
- a solar array
- a treated water system such as constructed wetlands or an irrigation area
- a discharge pipeline for treated water
- a buffer between wastewater treatment facility structures and adjacent developments
- potential community facilities around the facility / in the buffer such as walking trails or other recreational facilities.

CONSULTATION PROCESS

11. How will the community be consulted about the project?

On behalf of Council, Logan Water Infrastructure Alliance will implement a range of engagement activities including:

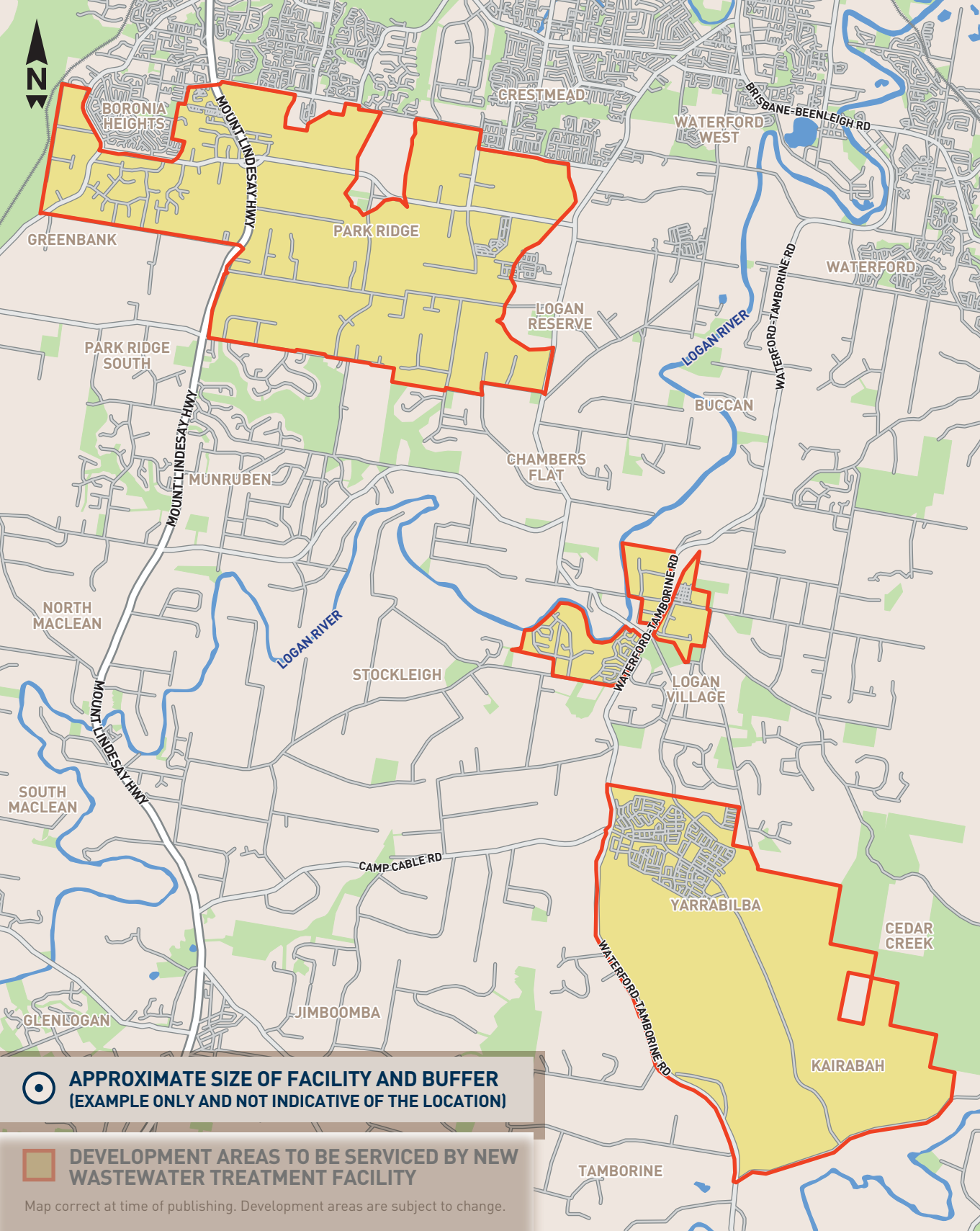
- online consultation via Council's website including information sheets and a 'have your say' survey where the community can provide feedback
- community information sessions in the project area
- face-to-face meetings (as required).

12. How long is the consultation open?

This phase of consultation closes on 20 August 2018. You can also provide feedback at any time by phoning Logan Water Infrastructure Alliance's Community Engagement Team on 07 3412 9609 or emailing community@loganwia.com.au

Information on Council's major water and wastewater projects is provided on this website: <https://www.logan.qld.gov.au/environment-water-and-waste/water/major-projects>

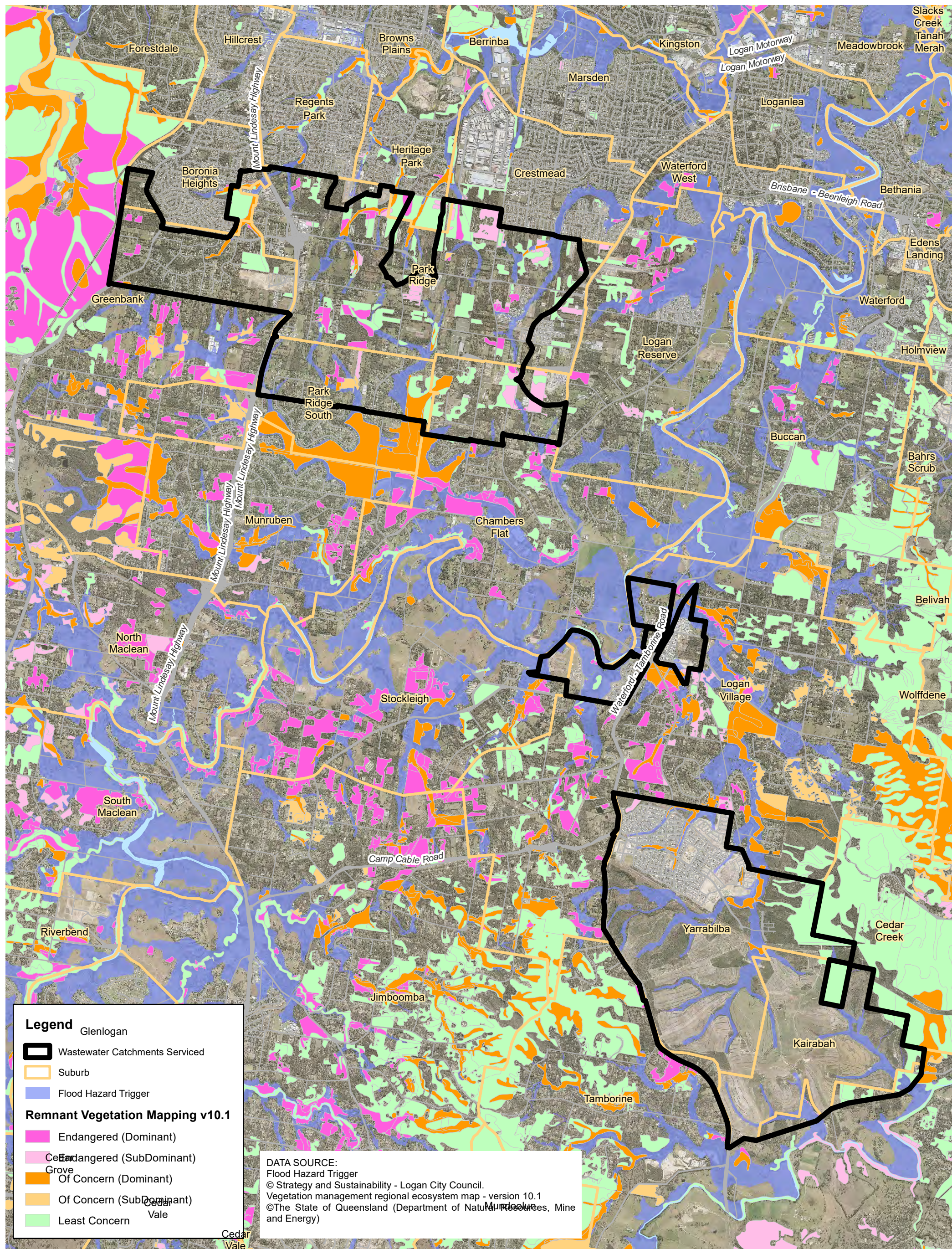
ENDS



 **APPROXIMATE SIZE OF FACILITY AND BUFFER**
(EXAMPLE ONLY AND NOT INDICATIVE OF THE LOCATION)

 **DEVELOPMENT AREAS TO BE SERVICED BY NEW WASTEWATER TREATMENT FACILITY**

Map correct at time of publishing. Development areas are subject to change.



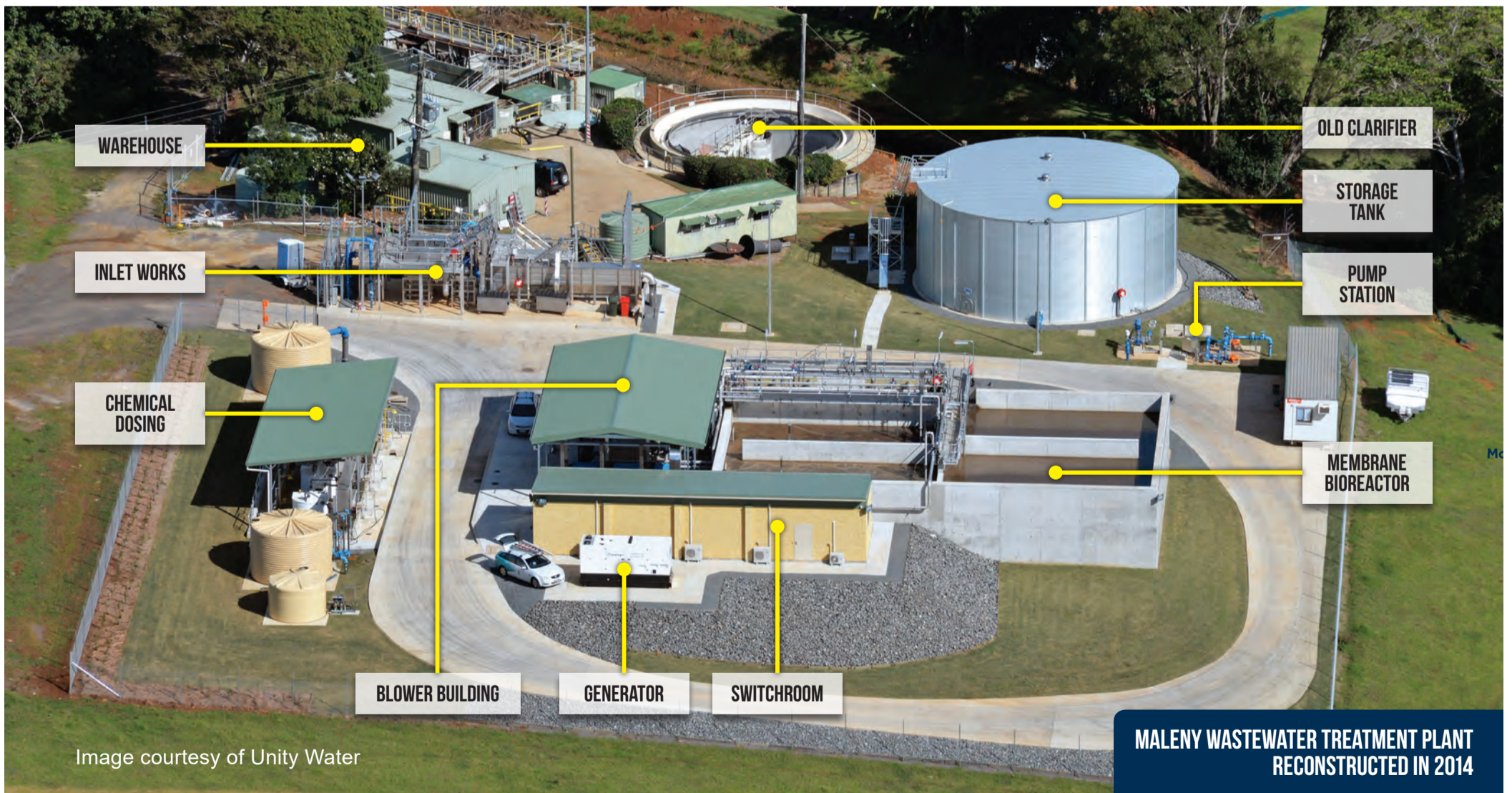
Legend

- Glenlogan
- Wastewater Catchments Served
- Suburb
- Flood Hazard Trigger

Remnant Vegetation Mapping v10.1

- Endangered (Dominant)
- Endangered (SubDominant)
- Of Concern (Dominant)
- Of Concern (SubDominant)
- Least Concern

DATA SOURCE:
 Flood Hazard Trigger
 © Strategy and Sustainability - Logan City Council.
 Vegetation management regional ecosystem map - version 10.1
 ©The State of Queensland (Department of Natural Resources, Mine and Energy)



What should Council consider when selecting a site?

Logan South WWTP Survey Form

www.logan.qld.gov.au

What is important to consider when selecting a new location for a wastewater (sewage) treatment facility?

This facility is needed to service the development corridor which extends from Park Ridge to Yarrabilba. As development progresses and the population increases in this corridor, additional critical infrastructure such as wastewater treatment facilities and trunk pipelines is required.

Approximately 10 hectares of land is required to build the facility, with an additional 550m surrounding this for a buffer between the facility and developed areas. The site needs to:

- be near the development areas it will service
- have a sufficient flood free area for key structures
- be near a place where highly treated water from the facility can be released such as a waterway, irrigation area or a business area where the water can be used.

There is also the opportunity to incorporate community amenities as part of this development, such as walking trails or recreational areas.

Council is co-funding this project with the Queensland Government and coordinating it in consultation with regulatory authorities and community members. Council's Logan Water Infrastructure Alliance will undertake all planning and design activities.

We encourage you to provide your insights and suggestions on what Council needs to consider when finding a location for this wastewater treatment facility. View the project information on Council's Have your Say site at <http://haveyoursaylogan.engagementhq.com> and provide feedback, or complete this survey and return to community@loganwia.com.au.

Your Details:

Property Owner

Resident

Business

Community centre / group

NAME: _____ PHONE: _____

ADDRESS: _____

ORGANISATION: _____

ROLE: _____ EMAIL: _____

What should Council consider when selecting a site?

Logan South WWTP Survey Form

www.logan.qld.gov.au

1. What are your priorities in terms of Council's wastewater management services? (please select all relevant)

- An efficient service, with minimal impacts on me
- Compliance with regulations, at the lowest cost to ratepayers
- Minimal impacts on the environment
- Minimal impacts on community members
- Use of the latest treatment technologies
- Other

Additional Comments:

2. What are the main things Council should consider when selecting a site for the new treatment facility? (please select up to five)

- Close to main roads
- Integration with surrounding land uses
- Availability of flood free land
- Close to communities which need wastewater services
- Local wind and weather patterns

- Cost of developing the plant and connecting pipelines
- Availability of open space (a buffer) between the plant and residents
- Community health and safety
- Property values in the area
- Current land ownership
- Opportunities for local farms / businesses to use the treated water
- Environmental and cultural heritage values of the area
- Other

Additional Comments:

3. If a wastewater treatment facility was developed close to you, what would make it a good neighbour? (please select all relevant)

- Features developed by Council and the community working together
- Screened from view / visually appealing
- Effective management of odour
- Community amenities such as walking trails, and sports facilities

What should Council consider when selecting a site?

Logan South WWTP Survey Form

www.logan.qld.gov.au

- Minimal noise during operation
- Management of night lighting
- Good environmental management
- Minimal truck movements on local streets
- Containment of all wastewater on site / no overflows
- Upgraded local roads around the facility

Additional Comments:

4. This project is important to me, as I live / work in:

- Buccan
- Chambers Flat
- Kairabah
- Logan Reserve
- Logan Village
- Jimboomba
- Park Ridge
- Park Ridge South
- Stockleigh
- Yarrabilba
- Other: _____

Additional Comments:

5. What is your preferred way to receive information about this project?

- Letters / direct mail
- Email
- Information on Council's website
- Social media
- Stories in local media
- Community information sessions
- Community meetings
- Other

Additional Comments:

Logan South wastewater treatment facility

Responses to community questions – as at 7 August 2018

This document presents Council's responses to recent community questions about the search for a site for a wastewater treatment facility in the development corridor from Park Ridge to Yarrabilba. Responses are based on best available, current information.

SERVICING OF EXISTING PROPERTIES

1. Will residents who have their own wastewater treatment systems / septic systems have to connect to this new facility?

Council has no current plans for the new Logan South wastewater treatment plant (WWTP B) to service existing rural-residential properties.

Should current owners wish to develop their land to an urban configuration in future (within the framework of the Logan Planning Scheme), any future wastewater servicing potential will be assessed at that time.

PREVIOUS STUDIES

2. There have been previous planning studies for a second wastewater treatment facility in Logan South (WWTP B). Has Council declared this?

Yes. The *Project Background* document provided on the *Have your Say* site on Council's website references the previous studies related to Logan South WWTP B being:

- *Logan South Wastewater Servicing Strategy* by Cardno for Economic Development Queensland (EDQ) in 2016. This strategy recommended two new permanent wastewater treatment plants (WWTPs); one at Cedar Grove to service the Greater Flagstone Priority Development Area and potentially Jimboomba, and a second to service Yarrabilba, Greenbank, North Maclean, Logan Village and parts of Park Ridge.
- *Greenbank Wastewater Servicing Strategy* by Logan Water Infrastructure Alliance in 2017. This identified the potential to divert wastewater flows from the Greenbank and North Maclean areas to the proposed Cedar Grove WWTP.
- Preliminary planning investigations by Logan Water Infrastructure Alliance in 2017 and 2018 to consider a project area, criteria and constraints for a WWTP to service the development corridor extending from Park Ridge to Yarrabilba.

For transparency, EDQ has provided authority to upload a copy of the *Logan South Wastewater Servicing Strategy* (2016) to the *Have your Say* site. This was appended to the *Project Background* document on 24 July 2018. Please note that studies to date have been limited to high-level, desktop scans for potential sites. No detailed investigations or engineering work to 'prove up' potential sites have been undertaken.

DEVELOPERS' INVOLVEMENT AND FUNDING

3. Are developers involved in funding this facility?

This facility will be fully funded by developer contributions in the form of infrastructure charges.

Logan South wastewater treatment facility

Responses to community questions – as at 7 August 2018

For State Government Priority Development Areas (PDAs) such as Yarrabilba, infrastructure charges are payable to Economic Development Queensland (EDQ). EDQ distributes this revenue to Council according to the provisions of an Infrastructure Agreement. The Infrastructure Agreement between EDQ and Council is still being negotiated, so no formal agreement on WWTP B contributions exists as yet.

For development areas shown in Council's planning scheme, such as the Park Ridge development area, infrastructure charges are payable to Council. Council uses these reserved funds to construct infrastructure as required.

4. Why aren't developers made to incorporate wastewater treatment facilities into their developments?

If individual developers were required to provide wastewater treatment facilities to service specific developments, the result would be dozens of treatment facilities of different types and sizes scattered across Logan. Council would be required to operate and maintain these facilities on behalf of residents for many years. The impacts of this situation would be:

- high operating and maintenance costs for Council, which would have to be passed onto Logan residents through wastewater service charges
- location of treatment facilities in urban areas / near residents which may result in noise, odour, lighting and traffic impacts on residents
- an inability to discharge highly treated water to waterways or land, possibly resulting in the need to tanker wastewater off site to a centralised treatment location, resulting in frequent truck movements in residential areas.

Municipal treatment facilities which service larger areas are more cost-effective to operate, ultimately reducing charges to residents. This approach is applied in modern cities across the world.

5. How much money are developers contributing?

The cost of WWTP B is unknown at this stage. Estimates will not be available until a site has been selected, approvals obtained, design of the facility progressed and market pricing sourced. As an indication of the value of constructing a new WWTP in Logan South, the first stage of Cedar Grove WWTP (servicing approximately 20,000 equivalent persons) is an estimated \$46 million.

SITE SELECTION

6. Has a site already been endorsed by Council?

No preferred site for WWTP B has been endorsed by Council.

7. The map on Council's *Have your Say* site seems to exclude areas south of Yarrabilba as potential locations for a wastewater treatment facility. Is this true?

A decision on a site for WWTP B will be taken on the basis of combined community feedback and technical, environmental, financial and social criteria.

Logan South wastewater treatment facility

Responses to community questions – as at 7 August 2018

As such, the option to locate a WWTP south of Yarrabilba is not excluded, but it is likely that construction of a network of trunk wastewater pipelines from the development areas in Park Ridge, Logan Village and Yarrabilba south to such a site would be cost prohibitive.

8. I have some property in the area between Park Ridge and Yarrabilba to sell. Would this be suitable for WWTP B?

If you would like Council to consider your property as a potential location for WWTP B, please contact the project team on (07) 3412 9609 or community@loganwia.com.au. The team will register your contact details, the property location and size, and owners' details.

Once the initial community consultation phase has concluded on 20 August 2018, the project team will contact owners to discuss the suitability of their properties.

9. What happens after this round of community consultation finishes?

Feedback from this initial community consultation phase and preliminary planning work to date will inform the way forward. In consultation with EDQ, it is likely that a siting study addressing technical, environmental, financial and social criteria (including community feedback) will be prepared. This study is expected to recommend one or more potential sites for the WWTP B. The study will be publicly available, pending approval by EDQ and endorsement by Council.

TECHNICAL ISSUES

10. How will odour from the facility be managed?

While WWTP B has not been designed, it is expected that odour management initiatives will include:

- provision of a buffer between main structures and residential areas
- capturing and treatment of odorous gases (eg via trickling filters and activated carbon scrubbers) at critical points in the treatment process (eg inlet works).

11. Is a 550m buffer between the facility and residents sufficient?

The reference to a 550m buffer in communication materials responds to current government guidelines on the siting of potentially odour-causing infrastructure / high impact industry.

The recommended buffer distance for WWTPs was first put forward by the Victorian Environmental Protection Agency and has since been adopted by State Government agencies around Australia. As an example of relevant guidelines (and reference to a recommended 500m buffer for high impact industry), please refer to the State Planning Policy 5/10 Air, Noise and Hazardous Materials which can be found online here:

<https://www.cabinet.qld.gov.au/documents/2010/oct/spp%20air-noise%20and%20hazardous%20materials/Attachments/air-noise-hazard-policy%5b1%5d.pdf>

12. How much treated wastewater will come out of the facility and where will it go?

Based on an ultimate population of 120,000, the expected daily flows of treated water to a waterway or other land receival area could be roughly 18 megalitres, less any recycling volumes that can be achieved.

Logan South wastewater treatment facility

Responses to community questions – as at 7 August 2018

For comparison, the Loganholme WWTP currently discharges around 44 megalitres per day. The first stage of WWTP B is likely to service about 20,000 people. However, staging of the WWTP will depend on population growth / demand.

13. Will this new plant process sludge / biosolids on site or transport it off site?

As there is no site for WWTP B at this time, detailed work on biosolids handling has not been undertaken. However, the management of biosolids across Logan's existing WWTPs (and south east Queensland) involves contractors transporting biosolids in closed trucks to the Darling Downs for agricultural soil improvement. This activity is regulated by the State Government.

14. Will this facility contribute to localised flooding?

The volume of highly treated wastewater from this facility will be low compared with flood volumes, and the output is unlikely to impact overall flood levels. Based on the Cedar Grove WWTP requirements, the Queensland Department of Environment and Science (DES) may require an assessment of the impact of WWTP flows on receiving waters during flood and non-flood events prior to issuing an Environmental Authority. The Cedar Grove WWTP is designed to receive 6.5 times normal dry weather flows to ensure that no release of untreated flows during extreme wet weather events occurs.

15. If artificial wetlands are built on the site, will they contribute to pollution during wet weather?

If wetlands are used to polish treated flows to very low nutrient levels, they will not contribute to pollution during wet weather events. Once a site for WWTP B has been determined and detailed site investigations and preliminary design has commenced, the environmental regulator (DES) will be consulted about compliance requirements for operating the WWTP. This will determine treatment standards and nutrient management options, including any nutrient offset requirements.

Wetlands would be constructed above the Q100 flood line and designed to contain flows during extreme wet weather events. They will be bunded to prevent entry of overland stormwater flows into the wetlands, and be of a size to contain severe storm rain directly falling into the wetlands.

PROPERTY / LIFESTYLE ISSUES

16. Will neighbouring landowners be compensated following confirmation of the site?

Council has no policy for providing compensation to landowners surrounding a WWTP site.

17. Will the facility affect local property values?

Modern wastewater treatment facilities are relatively unobtrusive. They comprise low rise structures surrounded by a planted buffer zone between structures and residential properties. Vegetation is used to soften the appearance of structures and provide screening for residents. If wetlands are incorporated, they will be designed to be visually pleasing. A modern odour control system will also be provided.

In other suburbs where Council operates WWTPs, property values continue to increase (eg the Loganholme median house price has increased from \$318,500 in 2007 to \$396,000 in 2017, and in Jimboomba the median house price has increased from \$392,500 in 2007 to \$480,000 in 2017 – source *Price Finder*).

Logan South wastewater treatment facility

Responses to community questions – as at 7 August 2018

18. How will community amenities on the site benefit people who already live on acreage?

As noted on the *Have your Say* site for this project, Council proposes to establish a Community Reference Group to provide input on aspects of the WWTP design and delivery. This includes providing input on site amenities that benefit the local community (which could range from walking trails to sporting facilities). A similar group is active for the Cedar Grove WWTP. This group is currently making recommendations on preferred community amenities (which will be announced publicly pending funding and approvals).

19. Is Council risking residents' health due to odour particles from the facility getting into household water tanks?

The WWTP is not expected to generate any particulate air pollution during its operation that would have adverse effects on human health. Council is not aware of examples of this occurring around Australia. Odours would be captured and treated on site, and all odour impacts would be managed and monitored under the Environmental Authority from the regulator (DES).

ENDS

MEDIA RELEASE

16 August 2018

Last chance to have a say on site for new treatment plant

The Logan community has just a few more days to have its say about how Council should find a location for a new wastewater treatment plant in the city's south.

Logan City Council City Roads and Water Committee Chairman, Councillor Phil Pidgeon, confirmed Council had not endorsed any sites for the treatment plant before the consultation period started last month.

"Council has put this out to the community and feedback from residents will be considered before any decisions are made," he said.

"We will make our decision based on a combination of community feedback and technical, environmental, financial and social criteria."

The treatment plant will be required in the next three to four years to meet the needs of the city's rapidly-increasing population.

"Council currently has permanent plants at Loganholme and Beenleigh, and temporary facilities at Jimboomba and Flagstone," Cr Pidgeon said.

"This new treatment plant will service new development at Yarrabilba, Logan Village, Chambers Flat and Park Ridge, while another one is planned at Cedar Grove.

Cr Pidgeon said the new state-of-the-art facility would have a much smaller footprint than traditional plants when built, and would use high quality odour treatment.

"Council is looking at using new technology such as membrane bio-reactors and wetlands to polish the treated water to a very high quality.

"It is essential infrastructure for our community that we need to build."

Council invests around \$100 million in water and wastewater infrastructure each year. The new plant will be fully funded by developer contributions.

Residents can have their say until 5pm on Monday, August 20 by going to <https://haveyoursaylogan.engagemthq.com/>

Date:	15/08/2018	Issued by:	Media Branch Logan City Council
Use by date:	20/08/2018	Contact:	Rebecca Waters
Doc ID:	Doc #12205501	Email:	rebeccawaters@logan.qld.gov.au
		Phone:	(07) 3412 4513