



LOGAN WATER INFRASTRUCTURE ALLIANCE

INFO SHEET

Logan South Wastewater Treatment Plant B

Council's Logan Water Infrastructure Alliance is planning a modern wastewater treatment plant at Chambers Flat. The plant will provide essential services to growing communities in Park Ridge, Logan Village and the Queensland Government's Yarrabilba Priority Development Area.



Why is the plant needed?

The City of Logan is one of Australia's fastest growing cities. A key development corridor extends from Park Ridge to Yarrabilba. As development progresses and the population increases in this corridor, additional critical infrastructure such as wastewater treatment facilities and trunk pipelines are required.

Who is managing the process?

Council is co-funding it with the Queensland Government and coordinating this project in consultation with regulatory authorities and community members.

Council's Logan Water Infrastructure Alliance will undertake all planning and design activities. The plant will be operated and maintained by Council.

What will the plant do?

The Logan South wastewater treatment plant B (WWTP B) will treat wastewater from households and businesses to a very high standard. Wastewater will be delivered to the plant via trunk pipelines from Park Ridge, Logan Village and Yarrabilba (developed as separate projects).

Logan South WWTP B is in the early planning phase and there is no concept design. However, as a modern wastewater treatment plant, Logan South WWTP B may use membrane bioreactor (MBR) technology and an advanced odour control system. There is also the potential for a constructed wetlands to 'polish' the treated water to achieve ultra-low nutrient levels (of nitrogen and phosphorus).

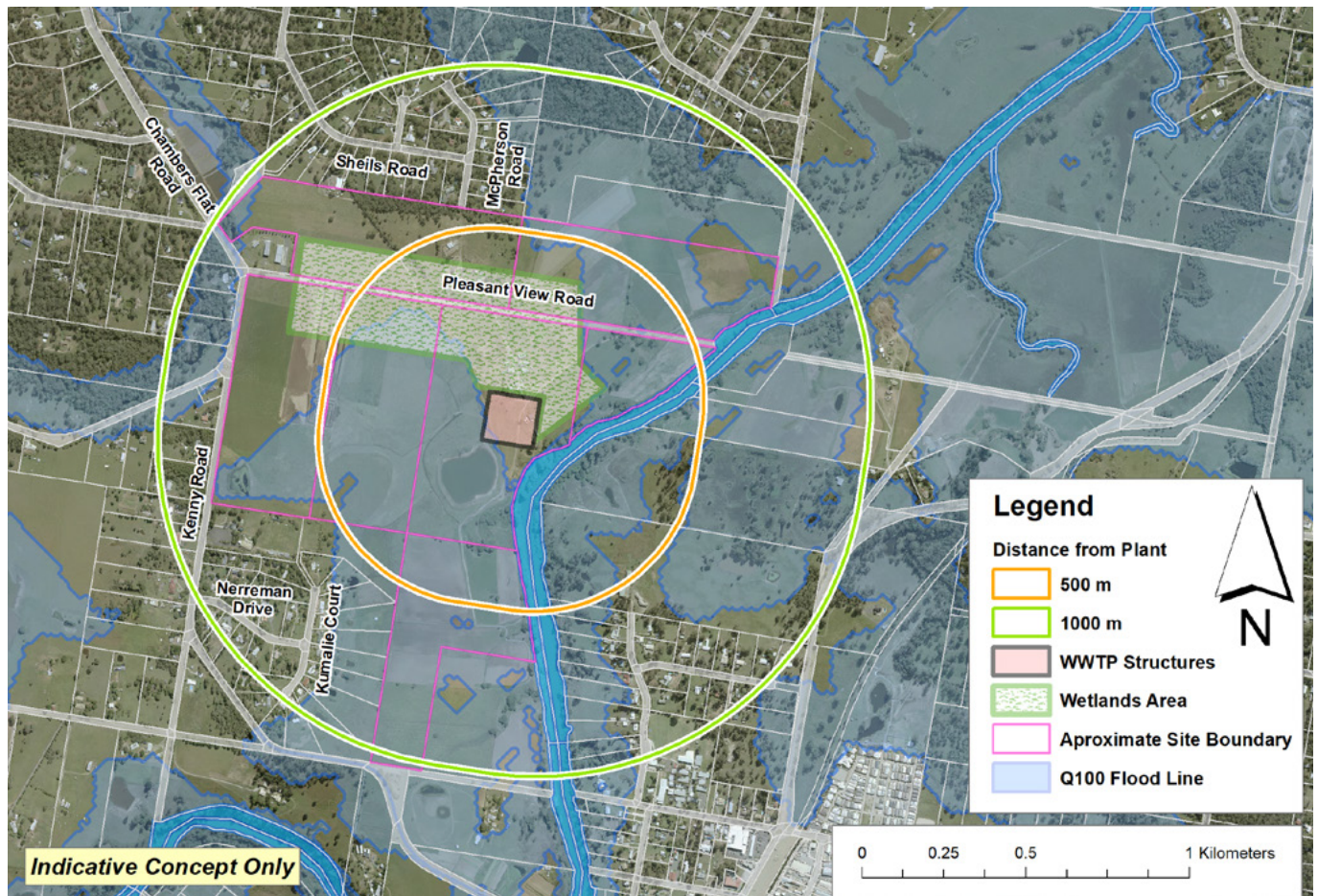
It is not intended that treated wastewater be used to supplement Logan City's water supply.

June 2019



LOGAN
WATER INFRASTRUCTURE
ALLIANCE





Where will the plant be located?

The site comprises several parcels of land on Pleasant View Road at Chambers Flat. The exact size of the land to be purchased is yet to be determined. Infrastructure will be located above the Q100 flood level.

The development will include a vegetated buffer zone between the plant's main buildings / facilities and residential areas. Modern treatment facilities are visually unobtrusive compared with older facilities.

What are the benefits?

The main project benefits and opportunities for Logan's economy, environment and community are:

- Essential services for growing communities in the city's central to southern corridor.
- Potential opportunities to enhance local community facilities and wildlife habitat as part of the development.
- Development of sustainable infrastructure that minimises lifecycle costs, energy use, greenhouse gas emissions, potential wastewater over flows and odours.
- Local employment and skills development during delivery and operation of new infrastructure.

- Local construction companies and suppliers will be used wherever possible.

What is the development timeframe?

A site has been selected and planning of the new wastewater treatment plant has commenced.

Following planning, engineering design, and approvals, construction of the treatment plant and connecting trunk pipelines will occur in stages.

Current planning suggests that the first stage of the treatment plant is required sometime after 2021 to service growth.

How do I get involved?

Community members are welcome to provide feedback and suggestions about the development of Logan South WWTP B. Residents can also nominate for the Community Reference Group by contacting Logan Water Infrastructure Alliance's community engagement team at community@loganwia.com.au or 07 3412 9609.

For information about the Yarrabilba Priority Development Area, you can contact Economic Development Queensland at edq@dsgmip.qld.gov.au.

**For more information contact
Logan Water Infrastructure Alliance:**

Mail: PO Box 1183, Beenleigh, Q. 4207
Phone: (07) 3412 9600 **Fax:** (07) 3412 9649
Email: community@loganwia.com.au

www.logan.qld.gov.au

